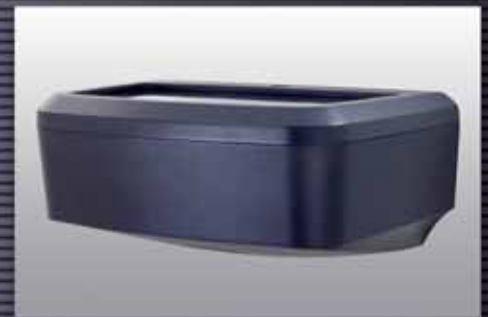


PATRIOT ***WALL SCONCE SERIES***

Performance, Style and Value



lsi
Lighting Solutions plus

PATRIOT WALL SCONCE SERIES

Contemporary Design Packed
with Performance

LSI's new Patriot Wall Sconce delivers specification-grade performance and style at a competitive price. Its distinctive lines and low profile design complement today's architectural trends both indoors and outside.

Packed with performance, the Patriot Wall Sconce features a horizontal lamp orientation, flat lens and choice of high performance optics to meet your specific needs. The Patriot Wall Sconce comes fully assembled for quick and easy installation. These luminaires can be mounted in either an uplight or a downlight configuration.

The Patriot Wall Sconce Series – energy-efficient, specification-grade lighting performance plus the value you expect from LSI.



The Patriot Wall Sconce is UL listed for wet locations in either position.



The downlight meets IESNA full cutoff classification.

LSI
Lighting Solutions *plus*

► HIGH-PERFORMANCE HORIZONTAL BURN

Where strict zoning requirements are encountered, the Community-Friendly Patriot Wall Sconce downlight offers full cutoff lighting distribution as defined by the IESNA (Illuminating Engineering Society of North America).



► ARCHITECTURAL HOUSING



One-piece, die-cast aluminum housing is a multi-radiused rectangular shape. Sweeping curves and distinctive lines provide a progressive look that enhances the architectural integrity of any site. Universal mounting plate is used for both uplight and downlight applications.

► HINGED DOOR FRAME

The die-cast aluminum door frame features two black stainless steel captive fasteners that allow for quick and easy access into the fixture. The hinges allow the door to swing completely open, or the door can be removed for ease of lamp and ballast maintenance when necessary.



► SILICONE GASKET



One-piece, extruded silicone, closed-cell sponge gasket seals the clear, flat, tempered glass lens to door frame and door frame to the housing. This prevents moisture, dust or insects from entering the lamp area – offering double-duty protection.

► LUMINAIRE FINISHES

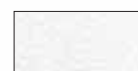
Each Patriot Wall Sconce is finished with LSI's exclusive DuraGrip® polyester-powder coat finishing process. The DuraGrip finish withstands extreme weather changes without cracking or peeling and is guaranteed for five full years.



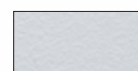
Bronze



Black



White



Platinum Plus



Buff



Green



Graphite



Metallic Silver

FULLY ASSEMBLED FOR QUICK AND EASY INSTALLATION

The Patriot Wall Sconce comes fully assembled (pre-wired and HID pre-lamped) from the factory. The specially designed universal mounting plate provides for easy installation in just three quick steps.



1. Attach wall-mounting plate to the junction box and hook fixture to the wall-mounting plate.



2. Make the wiring connections, and attach the fixture to the wall-mounting plate by hanging it over the beveled lip of the wall-mounting plate.



3. Lock fixture into place by tightening two hex head screws.

SEALING GROMMET

One-piece grommet, positioned at the point where internal wiring exits the housing, helps keep insects, dust and moisture out of the housing and ballast compartment.



LAMP OPTIONS

Luminaires operate with Metal Halide, High Pressure Sodium and Compact Fluorescent (single or double) lamps. Lamps supplied as standard - HID (clear, shipped installed) or Compact Fluorescent (coated, 4100K shipped separately).

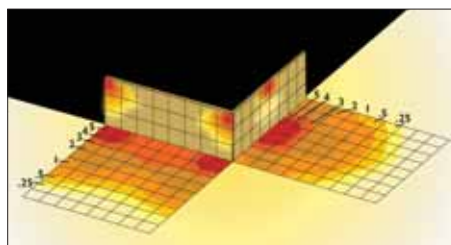
EMERGENCY OPERATION

Options for compliance with the Life Safety Code for Means of Egress emergency illumination:

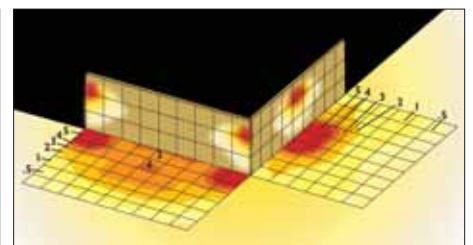
- Emergency Battery Back-up (for Compact Fluorescent units)
- Emergency Quartz (for HID units)
- One or Two 12 Volt Separate Circuits (for use with up to 35 watt Halogen lamps on both Compact Fluorescent and HID units)

REFLECTOR OPTIONS

Forward Throw (FTM & FT), Type III (3) and Wall Wash (WW) reflectors are available. All offer high performance, full cutoff distribution as defined by IESNA (downlight position only). Photometric data is tested in accordance with IESNA guidelines. Please visit our website at www.lsi-industries.com for detailed photometric data.



PTWS FT 175 MH



PTWS 3 175 MH

ELECTRICAL COMPONENTS

Electrical components are factory mounted in the housing and pre-wired with extended leads from the back of the unit through the sealing grommet. This eliminates the need to open the fixture when making the wiring connections, making installation quick and easy. All components are UL Listed.

THE PATRIOT FAMILY

- Outstanding Lighting Performance • Architectural Appeal
- Consistent Appearance Throughout Your Site

The Patriot family represents one of the greatest values in architectural lighting. Choose from a variety of area and wall sconce luminaires to effectively light your site while creating a sense of continuity throughout.

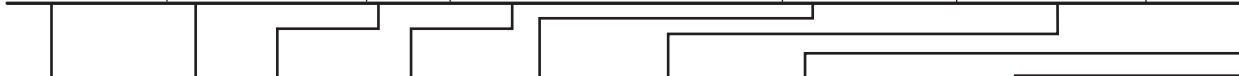
All Patriot luminaires feature:

- High performance optics
- Contemporary styling
- Quality construction
- Choice of finish colors



LUMINAIRE ORDERING INFORMATION

Luminaire Prefix	Distribution	Lamp Wattage	Light Source	Lens	Line Voltage ²	Luminaire Finish
PTWS	3 - Type III	50	MH - Metal Halide 70, 100 ¹ , 150, 175 Watt HPS - High Pressure Sodium 50, 70, 100, 150 Watt	F- Flat Clear Tempered Glass	120 208 240 277 347 480	BRZ - Bronze BLK - Black WHT - White PLP - Platinum Plus BUF - Buff GRN - Green GPT - Graphite MSV - Metallic Silver
	FT - Forward Throw	70				
	WW - Wall Wash	100 150 175				
	FTM - Forward Throw Medium	26 32 42 57 70	CFL - Compact Fluorescent Single 26, 32, 42, 57, 70 Watt CFL2 - Compact Fluorescent Double 26, 32, 42 Watt	F- Flat Clear Tempered Glass	UE - Universal Electronic (120-277V 50/60Hz) 347 ³	
	WW - Wall Wash		CFL - Compact Fluorescent Single 26, 32, 42 Watt			



PTWS FTM 42 CFL2 F UE BRZ BB

EXAMPLE OF A TYPICAL ORDER

FOOTNOTES:

- 1- Supplied with an HX-HPF transformer as standard. Also available with a 120/277 volt CW A transformer - consult factory.
- 2- For international voltages, consult factory.
- 3- 347 volt CFL is not available with dimming ballast (DIM) option. Consult factory for battery back-up (BB) option.
- 4- CFL Dimming Control by others.
- 5- SQN or SQT available on 100 watt minimum HID fixtures.
- 6- Fixtures are shipped with 100 watt quartz (120 volt) lamp.
- 7- Battery Back-up available on single and double voltage specific units. On double units, one lamp will be energized by battery back-up. Consult factory for specific job application compliance.
- 8- Utilizes GY6.35 socket(s). 12 volt separate circuit(s) required.

ACCESSORY ORDERING INFORMATION (Accessories are field installed)

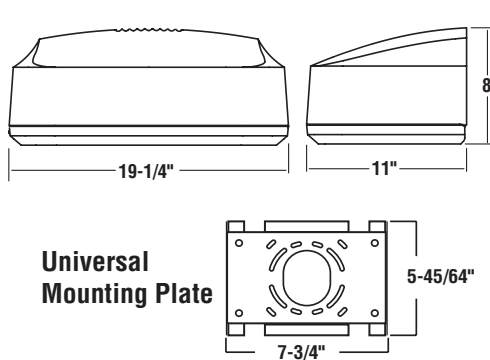
Description	Order Number	Description	Order Number
FK120 - Single Fusing	FK120+	PTWS PLS - Polycarbonate Shield	244657
FK277 - Single Fusing	FK277+	SW BLK - Surface Wiring Box	173156BLK++
DFK208, 240 - Double Fusing	DFK208, 240+	+ Available on HID fixture only. Fusing to be installed in a compatible junction box supplied by contractor.	
DFK480 - Double Fusing	DFK480+	++SW BLK not compatible with PMA or PMAR option.	
FK347 - Single Fusing	FK347+		

Options
PCI120 - Button-Type Photocell
PCI208 - Button-Type Photocell
PCI240 - Button-Type Photocell
PCI277 - Button-Type Photocell
PCI347 - Button-Type Photocell
DIM - CFL Control Voltage Dimming Ballast ⁴
C - Coated MH Lamp
PMA - Pole Mount Adaptor for square poles.
PMAR - Pole Mount Adaptor for round poles.
SQT - Stand-by Quartz (Time Delay) ^{5,6}
SQN - Stand-by Quartz (Non Time Delay) ^{5,6}
BB - CFL Battery Back-up ⁷
EQ - Emergency Quartz (Separate Circuit - HID only) ⁶
EM1 - One Emergency 12V Circuit Provision with 35 Watt Halogen Lamp ⁸
EM1LL - One Emergency 12V Circuit Provision - Less Halogen Lamp ⁸
EM2 - Two Emergency 12V Circuit Provisions with (2) 35 Watt Halogen Lamps ⁸
EM2LL - Two Emergency 12V Circuit Provisions - Less Halogen Lamps ⁸
LL - Less Lamp

SHIPPING WEIGHTS - Patriot Wall Sconce

Catalog Number	Est. Weight (lbs.)	Length (in.)	Width (in.)	Height (in.)
PTWS-HID	25	24.25	15.5	14.25
PTWS-CFL	20	24.25	15.5	14.25

DIMENSIONS



Listed for wet locations.



LSI LIGHTING SOLUTIONS PLUS
10000 Alliance Road
Cincinnati, Ohio 45242
(513)793-3200 FAX (513)793-0147
www.lsi-industries.com

Universal Mounting Plate