



COMMERCIAL

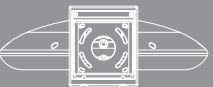
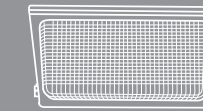
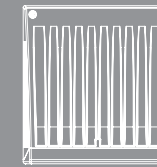
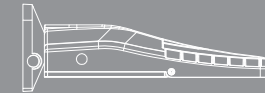
SLIM

TRADITIONAL

GEOMETRIC

MIRADA

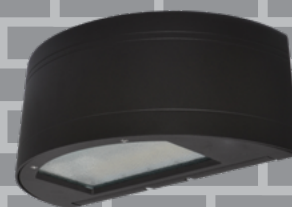
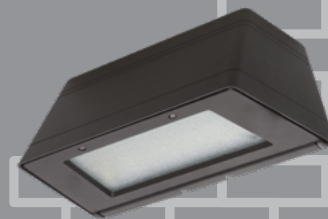
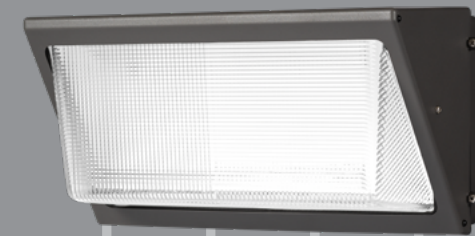
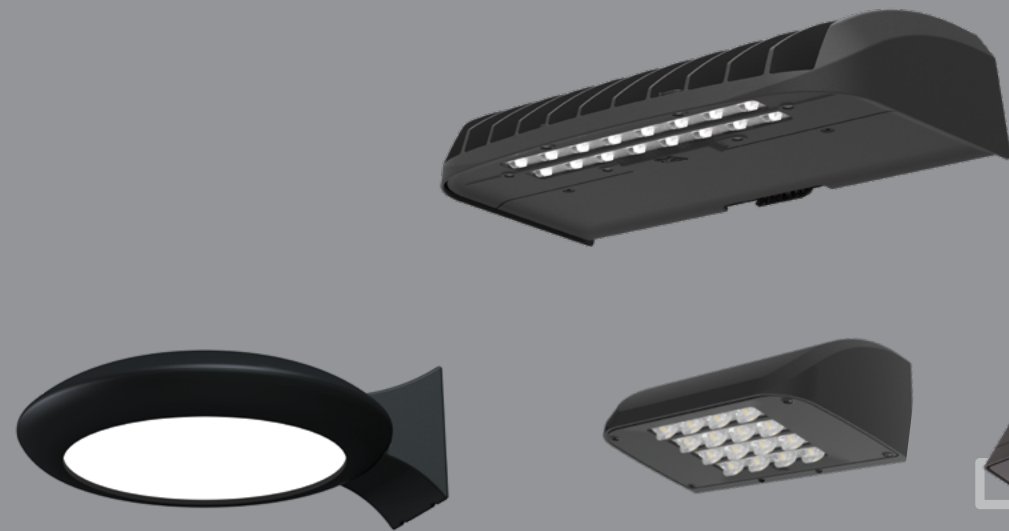
OPULENCE



# WALL MOUNT COMPARISON GUIDE

*Wall mount fixtures for EVERY mounting height and EVERY application*

- Energy efficient, easy contractor-friendly lighting solutions
- Lightweight designs allow for minimal installation effort
- Form factor and lumen packages for every opportunity





# Outdoor Wall Mount Comparison Chart

							
	<b>Opulence (OPS)</b>	<b>Mirada Small (XWS)</b>	<b>Mirada Medium (XWM)</b>	<b>Geometric Sconces (GST/GSR)</b>	<b>Slim Wall (WPSLS/WPSLL)</b>	<b>Commercial Wall Small (SSW/SWM/SLW)</b>	<b>Traditional Wall Light (T_WP)</b>
<b>Markets</b>	Grocery & Pharmacy, Parking Lot/Garage, Petroleum & C-Store, QSR, Retail	Automotive, Grocery & Pharmacy, Parking Lot/Garage, Petroleum & C-Store, QSR, Retail, Warehouse	Automotive, Grocery & Pharmacy, Parking Lot/Garage, Petroleum & C-Store, QSR, Retail, Warehouse	Grocery & Pharmacy, Parking Lot/Garage, Petroleum & C-Store, QSR, Retail	Parking Lot/Garage, Petroleum & C-Store, QSR, Warehouse	Parking Lot/Garage, Petroleum & C-Store, QSR, Warehouse	Parking Lot/Garage, Petroleum & C-Store, QSR, Warehouse
<b>Size L x W x H</b>	18" x 16" x 4"	8" x 13" x 5.5"	13" x 20" x 5.5"	17" x 7" x 9" / 18" x 7" x 9"	4" x 6" x 7.5" / 5" x 9" x 9"	Varies	Varies
<b>Weight</b>	17 lbs	10 lbs	30 lbs	15 lbs	4 lbs / 8 lbs	4 lbs / 8 lbs / 10 lbs	6 - 15 lbs
<b>Typical Mounting Height</b>	10 - 20'	8 - 15'	10 - 20'	8-15'	8 - 15'	8 - 25'	8 - 20'
<b>Surface Conduit Entry</b>	Accessory Wiring Box	Extended Housing	Accessory Wiring Box	Accessory Wiring Box	Standard	Accessory Wiring Box	Standard
<b>High Voltage</b>	Yes	Yes	Yes	No	Large Only	No	Large & XL Only
<b>Lumen Range</b>	3,000 - 14,000	2,000 - 8,000	3,000 - 21,000	2,000 - 8,000	1,000 - 8,000	3,000 - 20,000	2,000 - 13,000
<b>LPW Range</b>	125 - 165	126 - 162	125 - 158	108 - 133	98 - 130	122 - 142	106 - 135
<b>IP</b>	66	65	65	Wet Location Only	Wet Location Only	65	Wet Location Only
<b>DLC 1</b>	Premium	Premium	Premium	Standard	Standard & Premium	Standard & Premium	Standard Only
<b>Lens/Optics</b>	Acrylic	Silicone, Acrylic or Polycarbonate	Silicone	Glass	Glass	Polycarbonate	Glass
<b>Distributions</b>	5Q, 5C, 5R, 3W, 4F, 5D, AD	2, 3, FT, MT	2, 3, FT	Forward Throw	Forward Throw	3, FT	Forward Throw
<b>CCT/CRI</b>	2700K, 3000K, 3500K, 4000K, 5000K / 80 CRI	2700K, 3000K, 3500K, 4000K, 5000K / 70 & 80 CRI	Amber, 3000K, 4000K, 5000K / 70CRI	3000K, 4000K, 5000K / 70CRI	3000K, 4000K, 5000K / 70CRI	4000K, 5000K / 70CRI	3000K, 4000K, 5000K / 70CRI
<b>IDA</b>	2700K and 3000K	2700K and 3000K	3000K Only	3000K Only	3000K Only	No	No
<b>Paint Finishes</b>	LSI Standard + Custom Colors	LSI Standard + Custom Colors	LSI Standard + Custom Colors	Bronze, Black, White, Silver	Bronze, Black, White	Bronze Only	Bronze, Black, White
<b>Photocell</b>	Twist Lock	Button	Button	Button	Button	Button	Button
<b>Sensors &amp; Controls</b>	AirLink Blue, IMSBT	AirLink Blue, Airlink Synapse, IMSBT	AirLink Blue, Airlink Synapse, IMSBT	AirLink Blue, IMSBT	No	No	No
<b>7-Pin Receptacle</b>	Yes	No	No	No	No	No	No
<b>Battery Backup</b>	Yes	Yes	Yes	Yes	Large Only	Yes	Large & XL Only
<b>Surge Device</b>	Optional 10kV	Optional 10kV	Optional 10kV	Optional 10kV	Driver Surge Protection Only	Optional 10kV	Driver Surge Protection Only
<b>Pricing</b>	\$\$\$	\$\$	\$\$\$	\$\$	\$	\$	\$
<b>Typical Lead Time</b>	15 - 25 Days	10 - 20 Days	10 - 20 Days	In stock, 5-10 Days	5 -10 Days	In stock, 5-10 Days	5-10 Days
<b>Companion Products</b>							

1 - Not all versions of this product may be qualified. Please check the DLC Qualified Products List at [www.designlights.org/QPL](http://www.designlights.org/QPL) to confirm which versions are qualified