



# Enclosed and Gasketed Position Guide

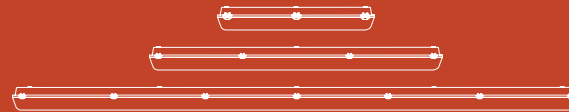
## Linear Fixtures for Special Applications

- Energy efficient, easy contractor-friendly lighting solutions
- IP65/IP66/IP67 and NSF ratings for specialty applications
- Variety of lens colors and textures available for every application

EGW 4' and 8'



EG3 2', 4' and 8'



UP TO 30'



EGA 4'



UP TO 14'



UP TO 10'



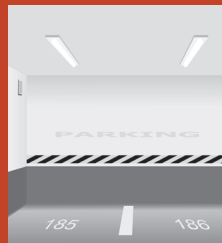
STORAGE



STORAGE



PARKING GARAGE



CAR WASH



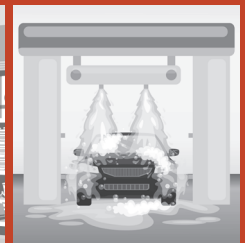
STORAGE



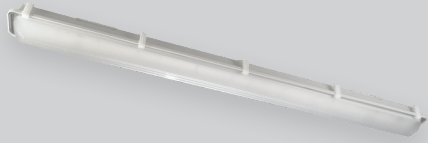
COLD STORAGE



CAR WASH



## Enclosed and Gasketed Position Guide



	Enclosed and Gasketed - Advantage Series (EGA)	Enclosed and Gasketed Linear LED Fixture (EG3)	Enclosed and Gasketed Linear LED Fixture - Wide Wet Location (EGW)
	★★★	★★★★	★★★★
Applications	Warehouse, Manufacturing, Service Bays, Retail Cold Storage	Warehouse, Manufacturing, Service Bays, Retail Cold Storage	Warehouse, Manufacturing, Service Bays, Retail Cold Storage
Sizes Available	4'	2', 4', and 8'	4' and 8'
Luminaire Width	4 3/8"	6 3/4"	14 1/2"
Mounting Height	Up to 12'	Up to 16'	Up to 30'
Delivered Lumens	5,000L	4,000L - 13,000L	10,000L - 27,000L
CCT	4000K, 5000K	3500K, 4000K, 5000K	4000K, 5000K
Wattage	36	32 - 95	69 - 190
LPW	Up to 138 LPW	Up to 143 LPW	Up to 147 LPW
Temperature Rating	Up to 40C	Up to 40C	Up to 40C
Listings	Wet Location, IP65	Wet Location, IP65/IP66/IP67, NSF (Zone 2)	Wet Location, IP65/IP66/IP67, NSF (Zone 2)
DLC <sup>1</sup>	Premium	Premium	Premium
Lens Colors	Diffuse	Clear, Diffuse	Clear, Diffuse
Lens Types	Ribbed	Smooth <sup>2</sup> , Ribbed	Smooth, Ribbed
Voltage Range	120V - 277V	120V - 480V	120V - 480V
Battery Backup	No	Yes	Yes
Controls/Sensors	None	External PIR Motion Sensor (OCSWL)	External PIR Motion Sensor (OCSWL)
Pricing	\$	\$\$	\$\$\$

<sup>1</sup> Not all versions of this product may be qualified. Please check the DLC Qualified Products List at [www.designlights.org/OPL](http://www.designlights.org/OPL) to confirm which versions are qualified.

<sup>2</sup> Not all versions of this product may be available with this lens type.

