

Canopy Style: 3x1 Inline w/ Kiosk

Canopy Size: 24' x 95'

Initial Levels at grade and vertically on pumps.

(13) SCV-LED-10L-SC-50

Fixture Lumens: 10,317

Fixture Watts: 67

Lumens/Watt: 154

Mounting Height: 15'

Calculation Summary

Canopy Average: 30.11

Pump Average Inner: 21.19

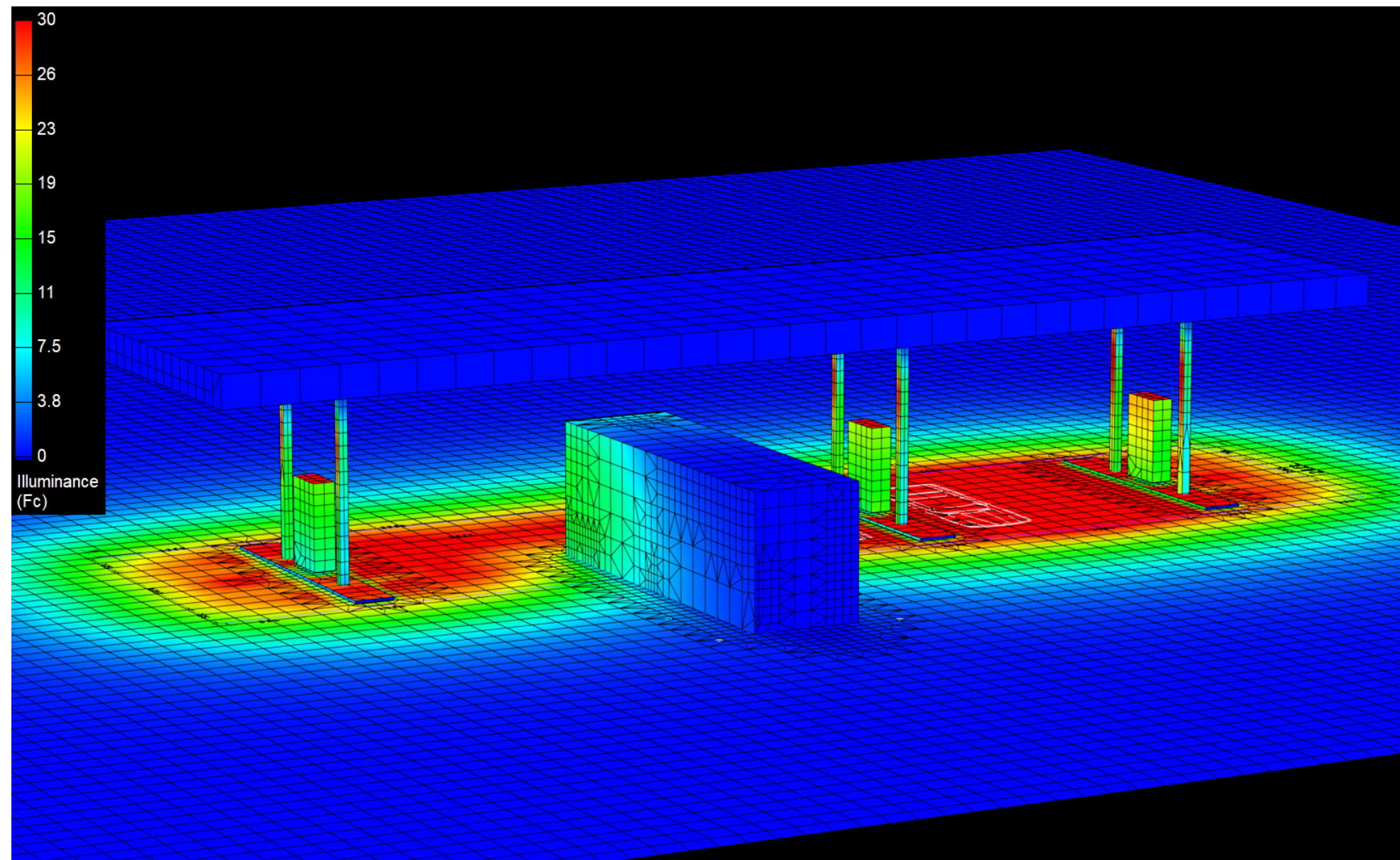
Pump Average Outer: 13.54

Transition Average: N/A

Total Watts: 871

Watts/sq.ft.: 0.38

Lumens/sq.ft. : 58.9



Canopy Style: 3x1 Inline w/ Kiosk

Canopy Size: 24' x 95'

Initial Levels at grade and vertically on pumps.

(13) SCV-LED-10L-SC-50

Fixture Lumens: 10,317

Fixture Watts: 67

Lumens/Watt: 154

Mounting Height: 15'

Calculation Summary

Canopy Average: 30.11

Pump Average Inner: 21.19

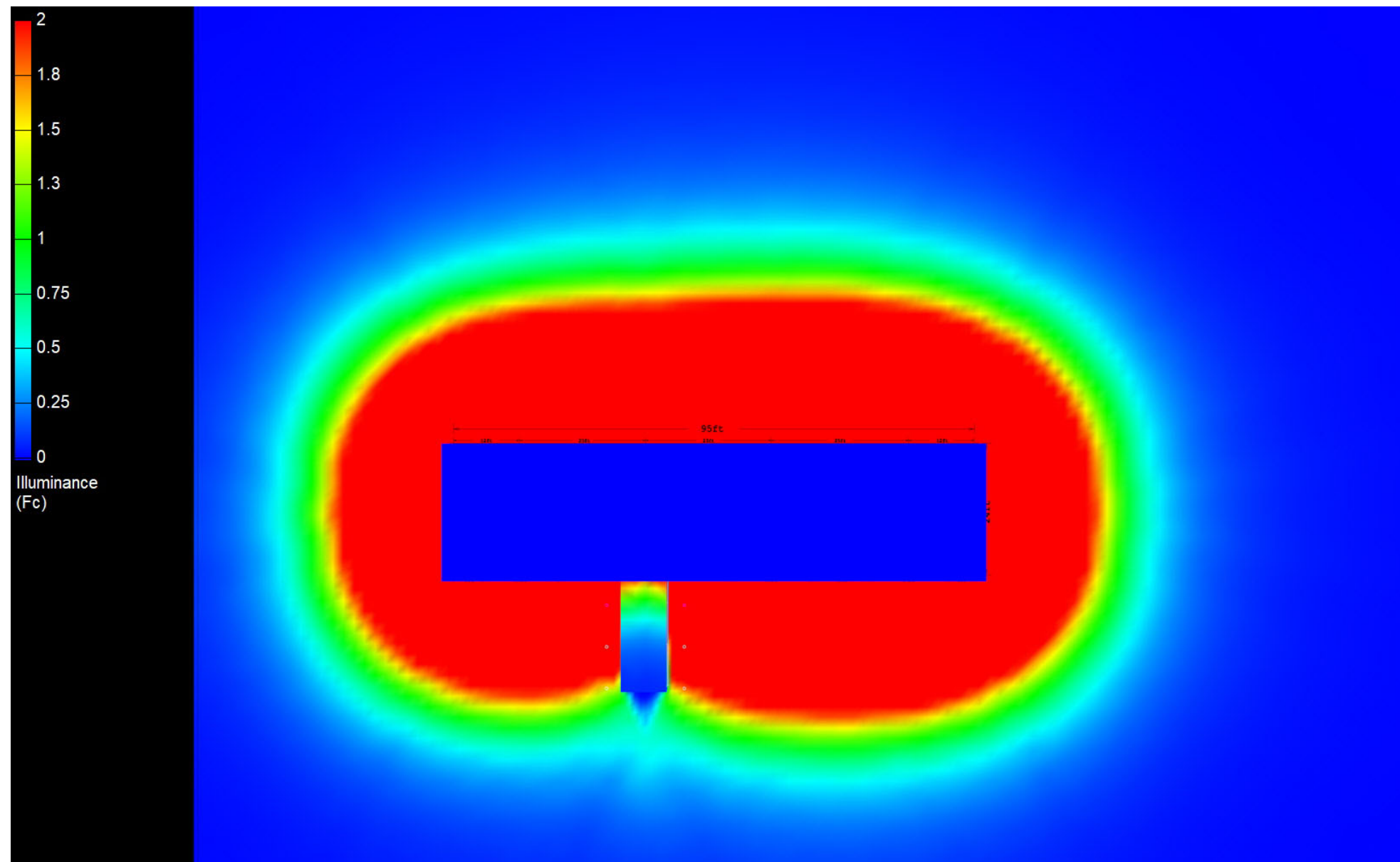
Pump Average Outer: 13.54

Transition Average: N/A

Total Watts: 871

Watts/sq.ft.: 0.38

Lumens/sq.ft. : 58.9



Canopy Style: 3x1 Inline w/ Kiosk

Canopy Size: 24' x 95'

Initial Levels at grade and vertically on pumps.

(13) SCV-LED-10L-SC-50

Fixture Lumens: 10,317

Fixture Watts: 67

Lumens/Watt: 154

Mounting Height: 15'

Calculation Summary

Canopy Average: 30.11

Pump Average Inner: 21.19

Pump Average Outer: 13.54

Transition Average: N/A

Total Watts: 871

Watts/sq.ft.: 0.38

Lumens/sq.ft. : 58.9

