

# Canopy Style: 3+3 w/ Kiosk

Canopy Size: 64' x 94'

Initial Levels at grade and vertically on pumps.

## (18) SCV-LED-20L-SC-50

Fixture Lumens: 20,234

Fixture Watts: 133

Lumens/Watt: 152

Mounting Height: 15'

## Calculation Summary

Canopy Average: 40.56

Pump Average Inner: 20.46

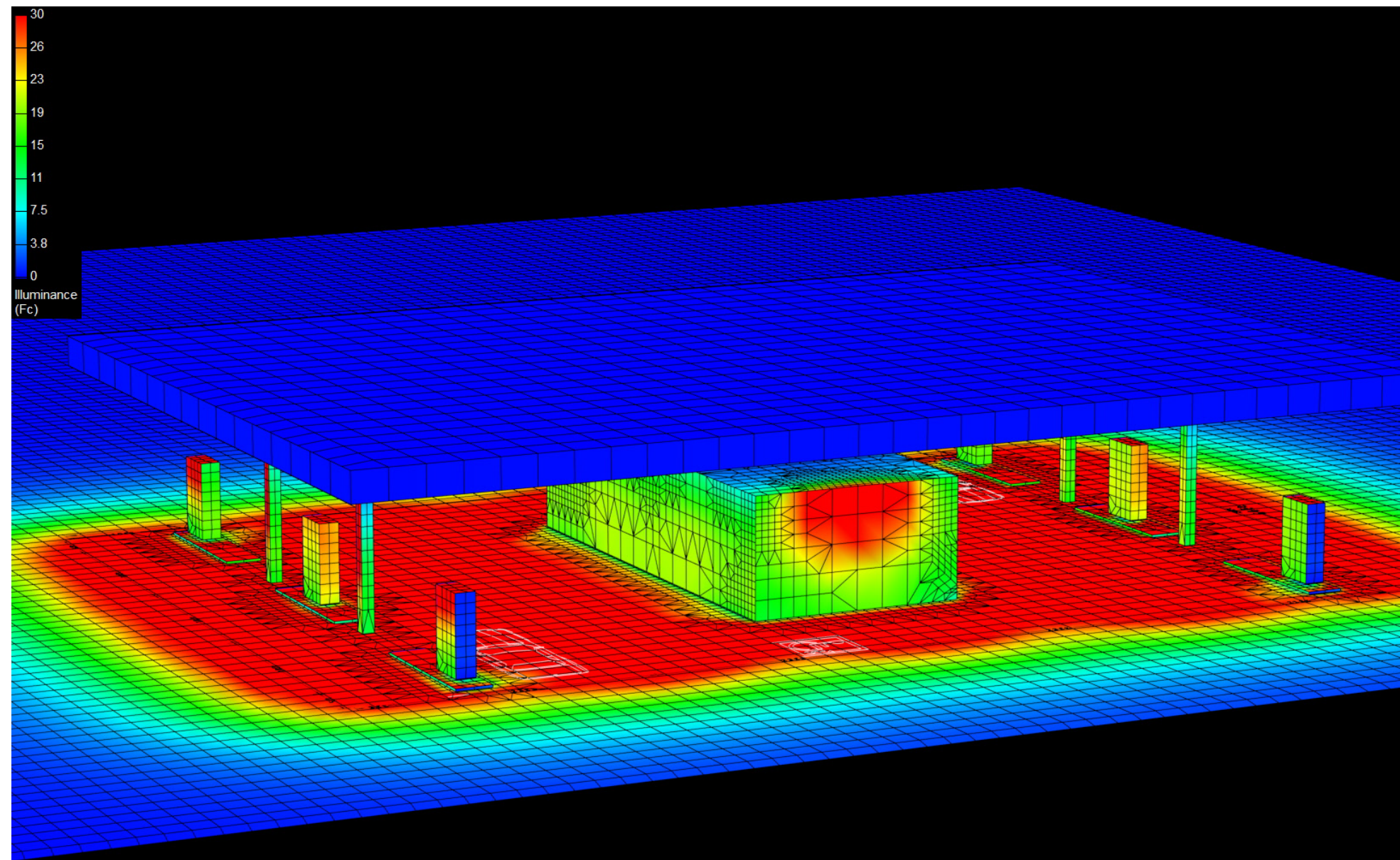
Pump Average Outer: 20.46

Transition Average: N/A

Total Watts: 2394

Watts/sq.ft.: 0.40

Lumens/sq.ft. : 60.5



# Canopy Style: 3+3 w/ Kiosk

Canopy Size: 64' x 94'

Initial Levels at grade and vertically on pumps.

## (18) SCV-LED-20L-SC-50

Fixture Lumens: 20,234

Fixture Watts: 133

Lumens/Watt: 152

Mounting Height: 15'

## Calculation Summary

Canopy Average: 40.56

Pump Average Inner: 20.46

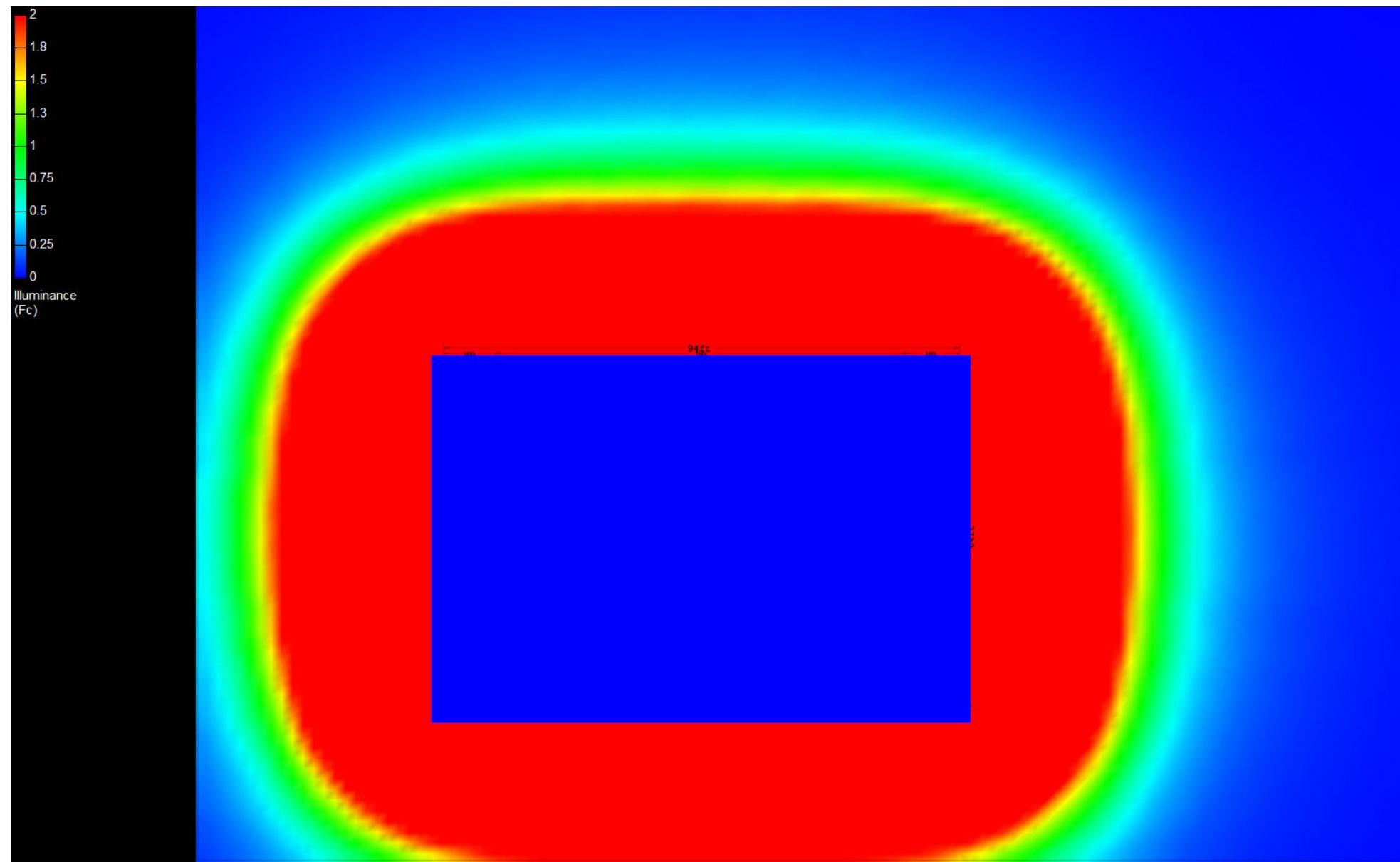
Pump Average Outer: 20.46

Transition Average: N/A

Total Watts: 2394

Watts/sq.ft.: 0.40

Lumens/sq.ft. : 60.5



# Canopy Style: 3+3 w/ Kiosk

Canopy Size: 64' x 94'

Initial Levels at grade and vertically on pumps.

## (18) SCV-LED-20L-SC-50

Fixture Lumens: 20,234

Fixture Watts: 133

Lumens/Watt: 152

Mounting Height: 15'

## Calculation Summary

Canopy Average: 40.56

Pump Average Inner: 20.46

Pump Average Outer: 20.46

Transition Average: N/A

Total Watts: 2394

Watts/sq.ft.: 0.40

Lumens/sq.ft. : 60.5

