

# Canopy Style: 3+3 w/ Kiosk

Canopy Size: 64' x 94'

Initial Levels at grade and vertically on pumps.

## (24) SCV-LED-20L-SC-50

Fixture Lumens: 20,234

Fixture Watts: 133

Lumens/Watt: 152

Mounting Height: 15'

## Calculation Summary

Canopy Average: 56.86

Pump Average Inner: 35.06

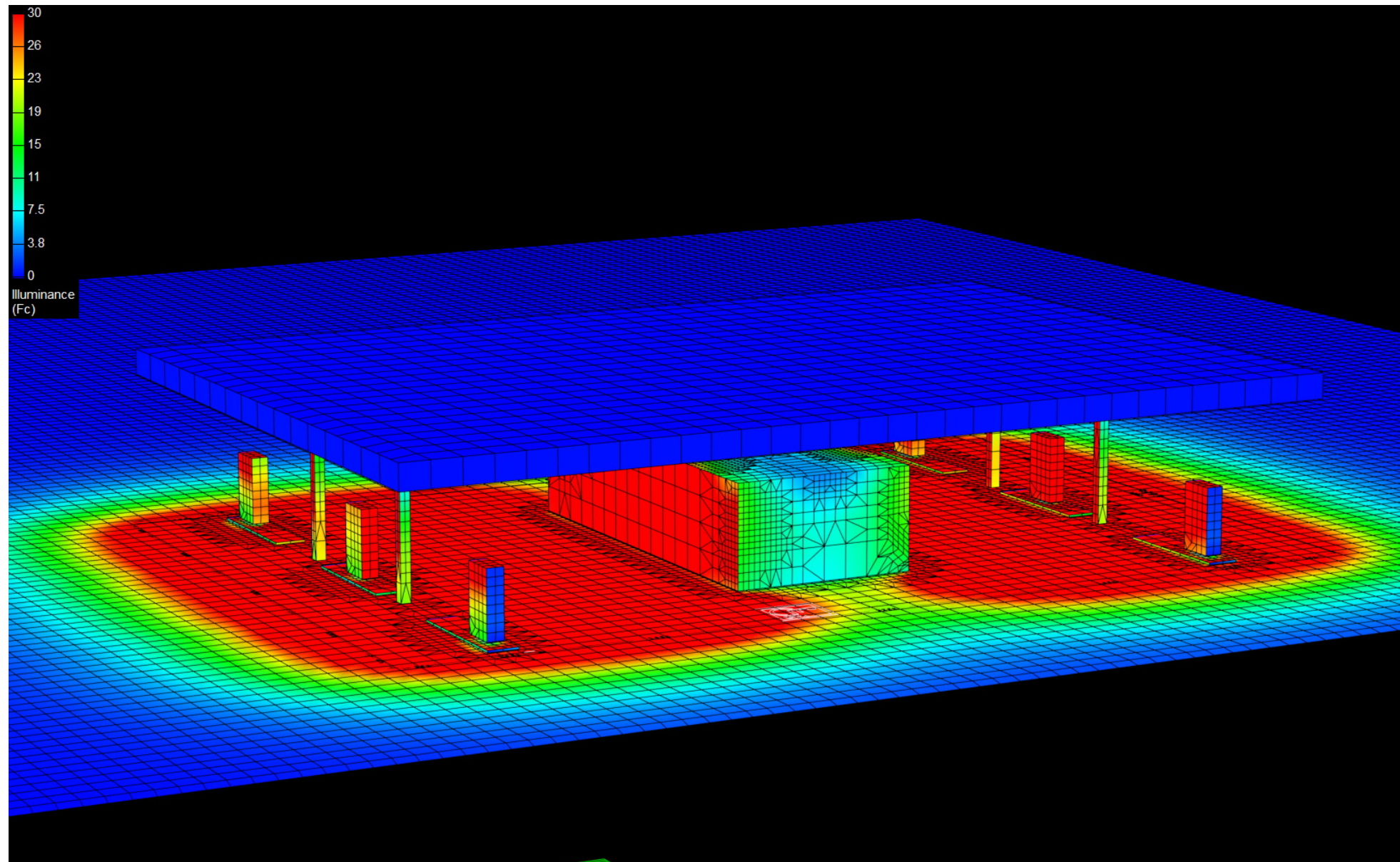
Pump Average Outer: 21.99

Transition Average: N/A

Total Watts: 3192

Watts/sq.ft.: 0.53

Lumens/sq.ft. : 80.7



# Canopy Style: 3+3 w/ Kiosk

Canopy Size: 64' x 94'

Initial Levels at grade and vertically on pumps.

## (24) SCV-LED-20L-SC-50

Fixture Lumens: 20,234

Fixture Watts: 133

Lumens/Watt: 152

Mounting Height: 15'

## Calculation Summary

Canopy Average: 56.86

Pump Average Inner: 35.06

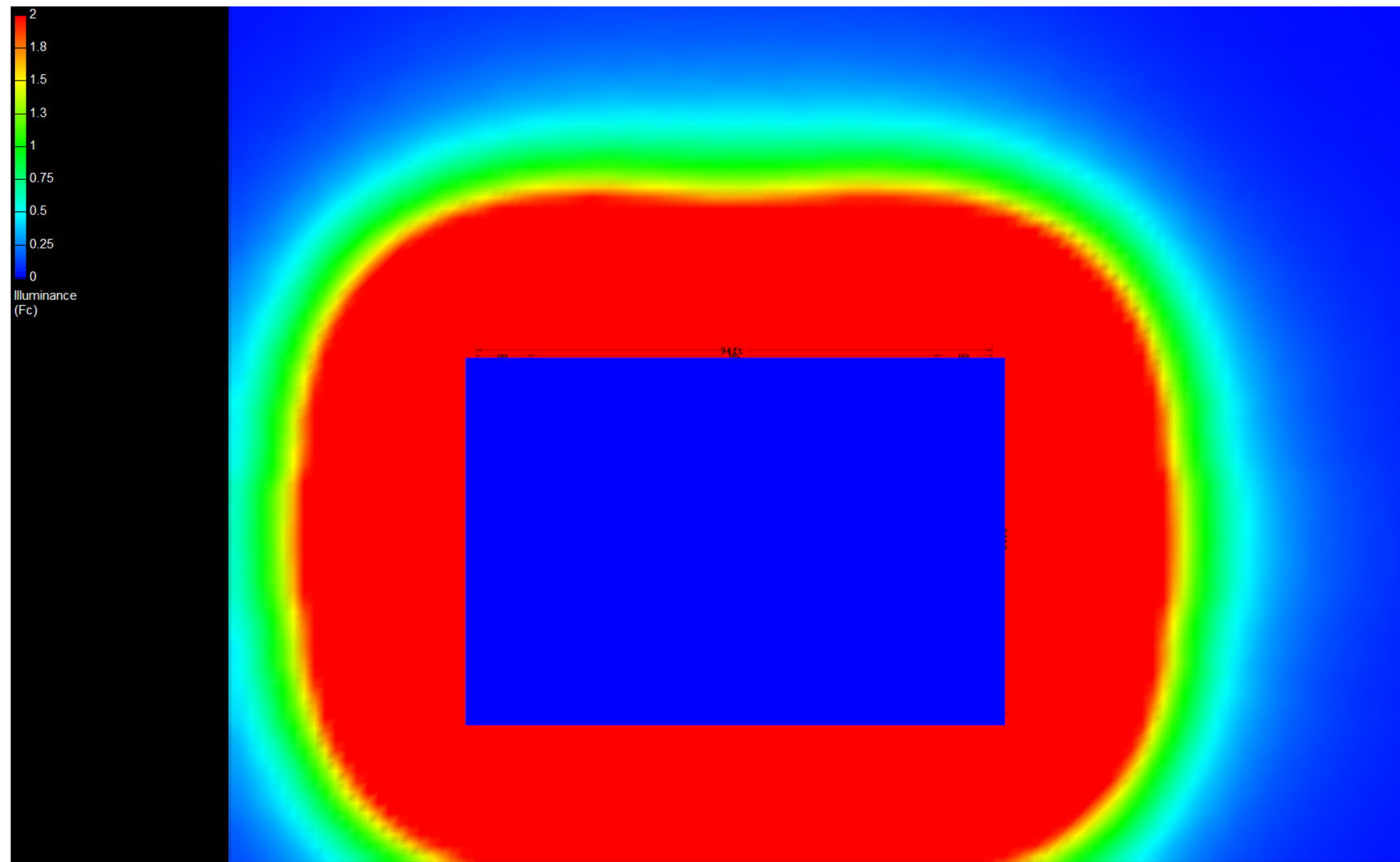
Pump Average Outer: 21.99

Transition Average: N/A

Total Watts: 3192

Watts/sq.ft.: 0.53

Lumens/sq.ft. : 80.7



# Canopy Style: 3+3 w/ Kiosk

Canopy Size: 64' x 94'

Initial Levels at grade and vertically on pumps.

## (24) SCV-LED-20L-SC-50

Fixture Lumens: 20,234

Fixture Watts: 133

Lumens/Watt: 152

Mounting Height: 15'

## Calculation Summary

Canopy Average: 56.86

Pump Average Inner: 35.06

Pump Average Outer: 21.99

Transition Average: N/A

Total Watts: 3192

Watts/sq.ft.: 0.53

Lumens/sq.ft. : 80.7

