

# Canopy Style: 3+3 w/ Kiosk

Canopy Size: 64' x 94'

Initial Levels at grade and vertically on pumps.

## (18) SCV-LED-15L-SC-50

Fixture Lumens: 14,963

Fixture Watts: 102

Lumens/Watt: 147

Mounting Height: 15'

## Calculation Summary

Canopy Average: 30.02

Pump Average Inner: 15.09

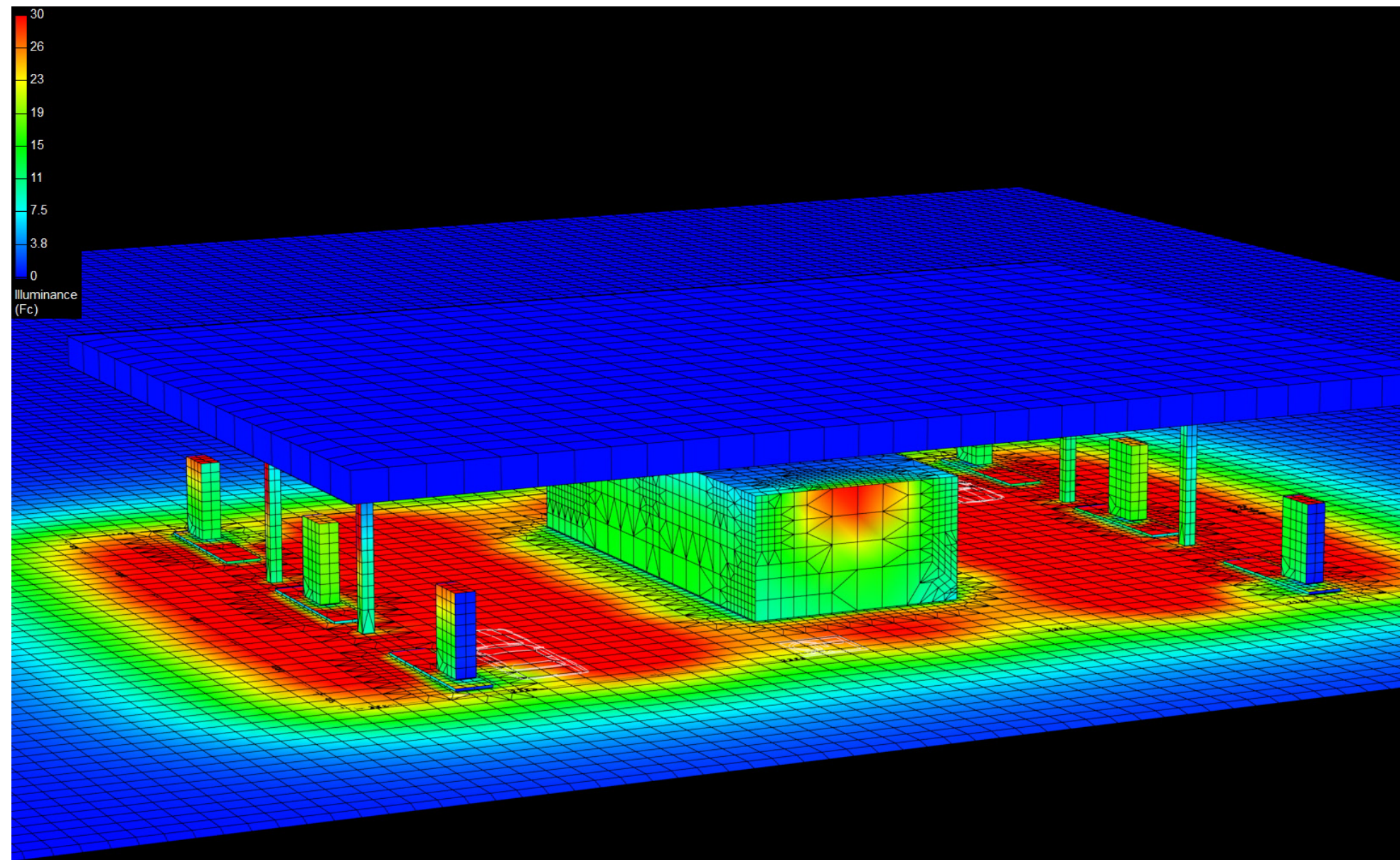
Pump Average Outer: 15.12

Transition Average: N/A

Total Watts: 1836

Watts/sq.ft.: 0.31

Lumens/sq.ft. : 44.8



# Canopy Style: 3+3 w/ Kiosk

Canopy Size: 64' x 94'

Initial Levels at grade and vertically on pumps.

## (18) SCV-LED-15L-SC-50

Fixture Lumens: 14,963

Fixture Watts: 102

Lumens/Watt: 147

Mounting Height: 15'

## Calculation Summary

Canopy Average: 30.02

Pump Average Inner: 15.09

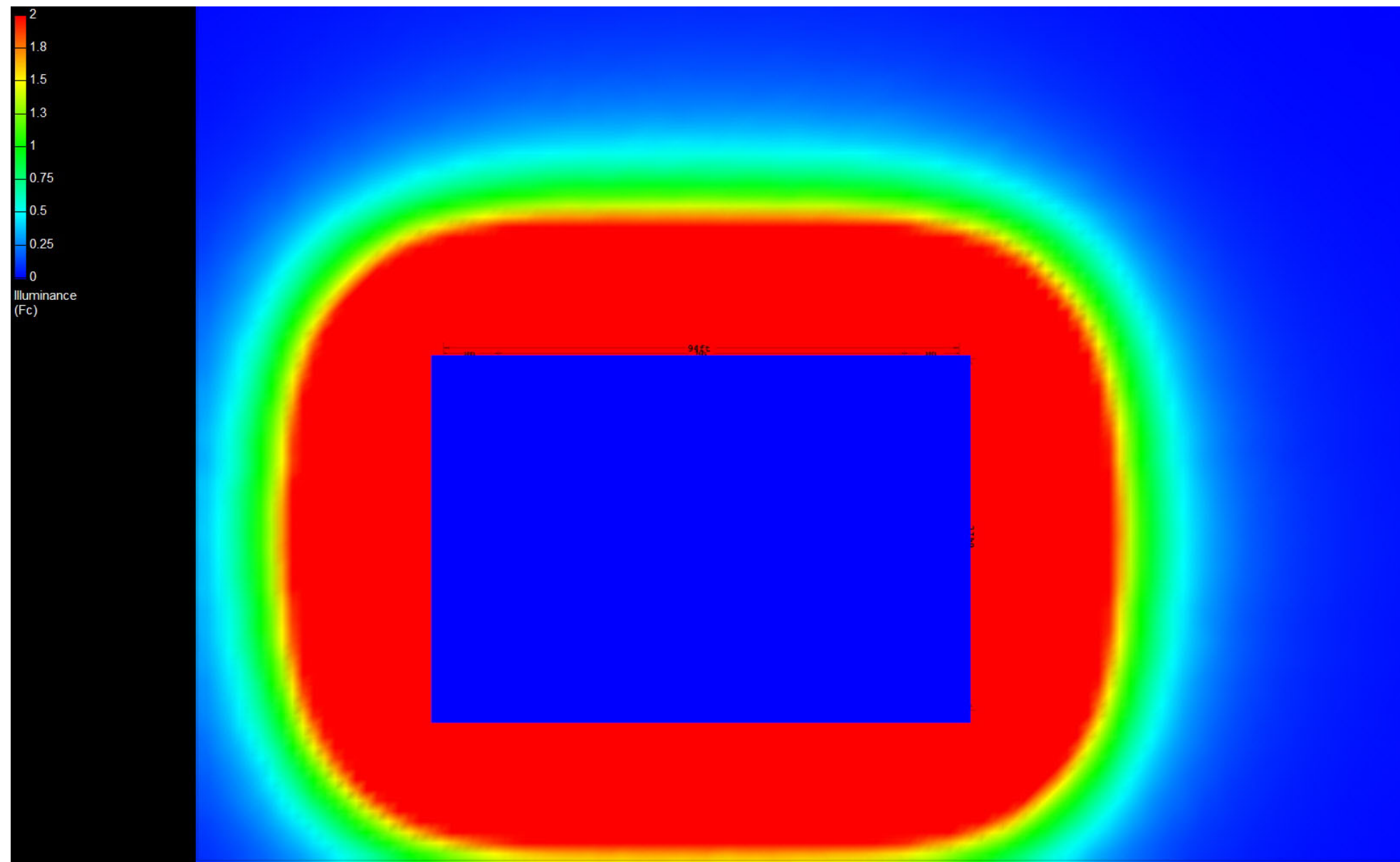
Pump Average Outer: 15.12

Transition Average: N/A

Total Watts: 1836

Watts/sq.ft.: 0.31

Lumens/sq.ft. : 44.8



# Canopy Style: 3+3 w/ Kiosk

Canopy Size: 64' x 94'

Initial Levels at grade and vertically on pumps.

## (18) SCV-LED-15L-SC-50

Fixture Lumens: 14,963

Fixture Watts: 102

Lumens/Watt: 147

Mounting Height: 15'

## Calculation Summary

Canopy Average: 30.02

Pump Average Inner: 15.09

Pump Average Outer: 15.12

Transition Average: N/A

Total Watts: 1836

Watts/sq.ft.: 0.31

Lumens/sq.ft. : 44.8

