

Canopy Style: 3+3 w/ Kiosk

Canopy Size: 64' x 94'

Initial Levels at grade and vertically on pumps.

(18) SCV-LED-13L-SC-50

Fixture Lumens: 13,444

Fixture Watts: 90

Lumens/Watt: 149

Mounting Height: 15'

Calculation Summary

Canopy Average: 29.96

Pump Average Inner: 13.55

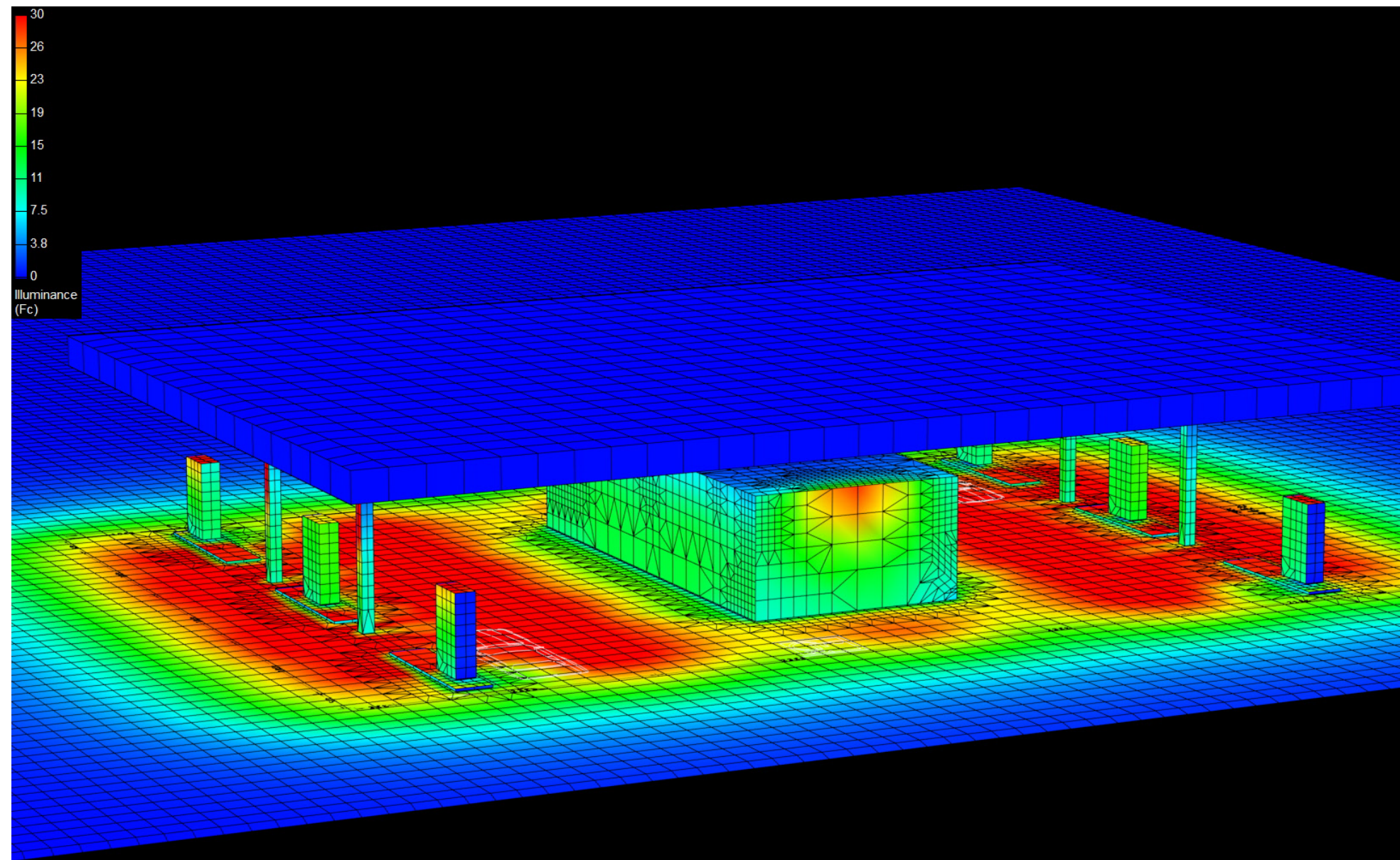
Pump Average Outer: 13.59

Transition Average: N/A

Total Watts: 1620

Watts/sq.ft.: 0.27

Lumens/sq.ft. : 40.2



Canopy Style: 3+3 w/ Kiosk

Canopy Size: 64' x 94'

Initial Levels at grade and vertically on pumps.

(18) SCV-LED-13L-SC-50

Fixture Lumens: 13,444

Fixture Watts: 90

Lumens/Watt: 149

Mounting Height: 15'

Calculation Summary

Canopy Average: 29.96

Pump Average Inner: 13.55

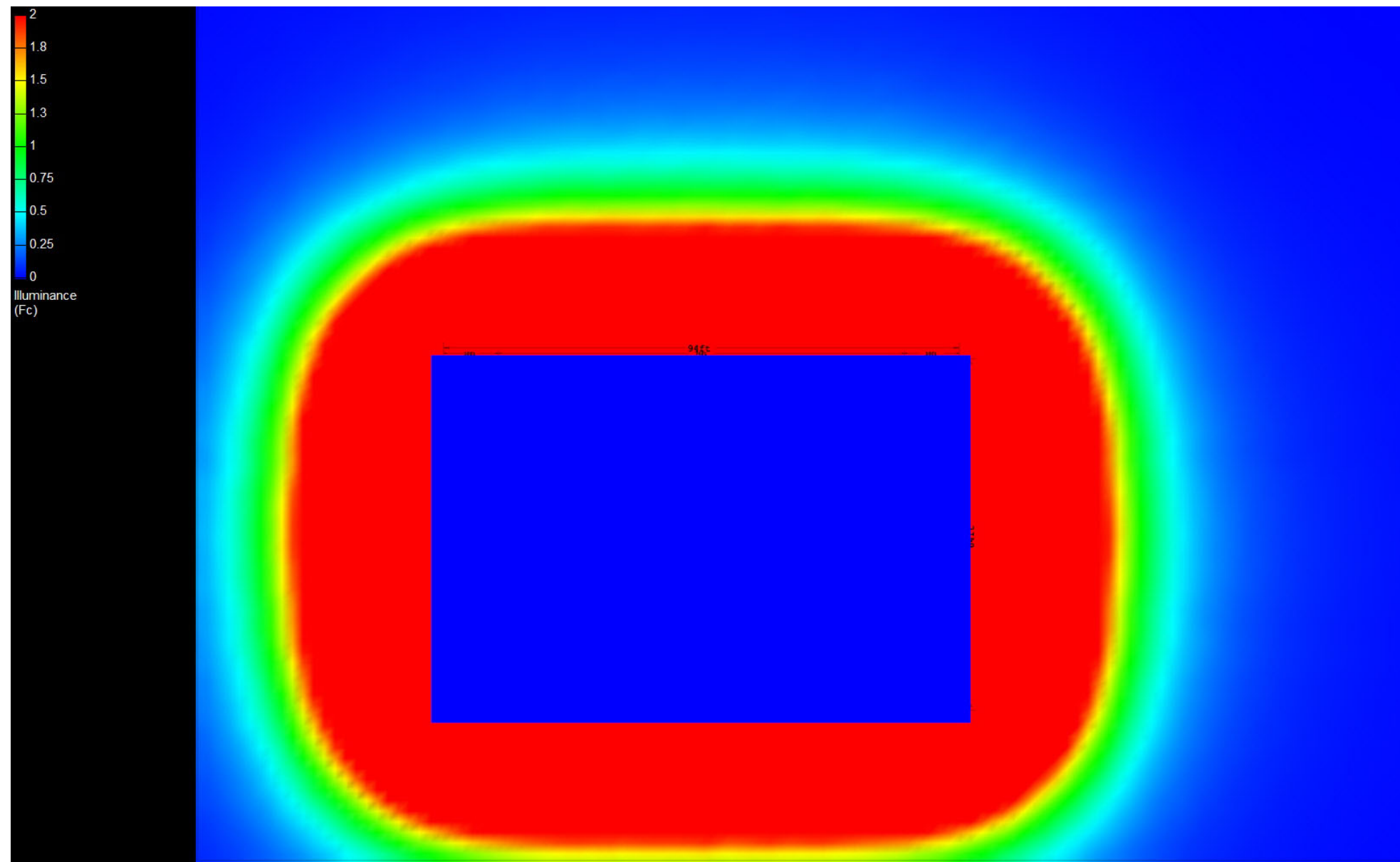
Pump Average Outer: 13.59

Transition Average: N/A

Total Watts: 1620

Watts/sq.ft.: 0.27

Lumens/sq.ft. : 40.2



Canopy Style: 3+3 w/ Kiosk

Canopy Size: 64' x 94'

Initial Levels at grade and vertically on pumps.

(18) SCV-LED-13L-SC-50

Fixture Lumens: 13,444

Fixture Watts: 90

Lumens/Watt: 149

Mounting Height: 15'

Calculation Summary

Canopy Average: 29.96

Pump Average Inner: 13.55

Pump Average Outer: 13.59

Transition Average: N/A

Total Watts: 1620

Watts/sq.ft.: 0.27

Lumens/sq.ft. : 40.2

