

# Canopy Style: 3+3 w/ Kiosk

Canopy Size: 64' x 94'

Initial Levels at grade and vertically on pumps.

## (24) SCV-LED-13L-SC-50

Fixture Lumens: 13,444

Fixture Watts: 90

Lumens/Watt: 149

Mounting Height: 15'

## Calculation Summary

Canopy Average: 37.78

Pump Average Inner: 23.30

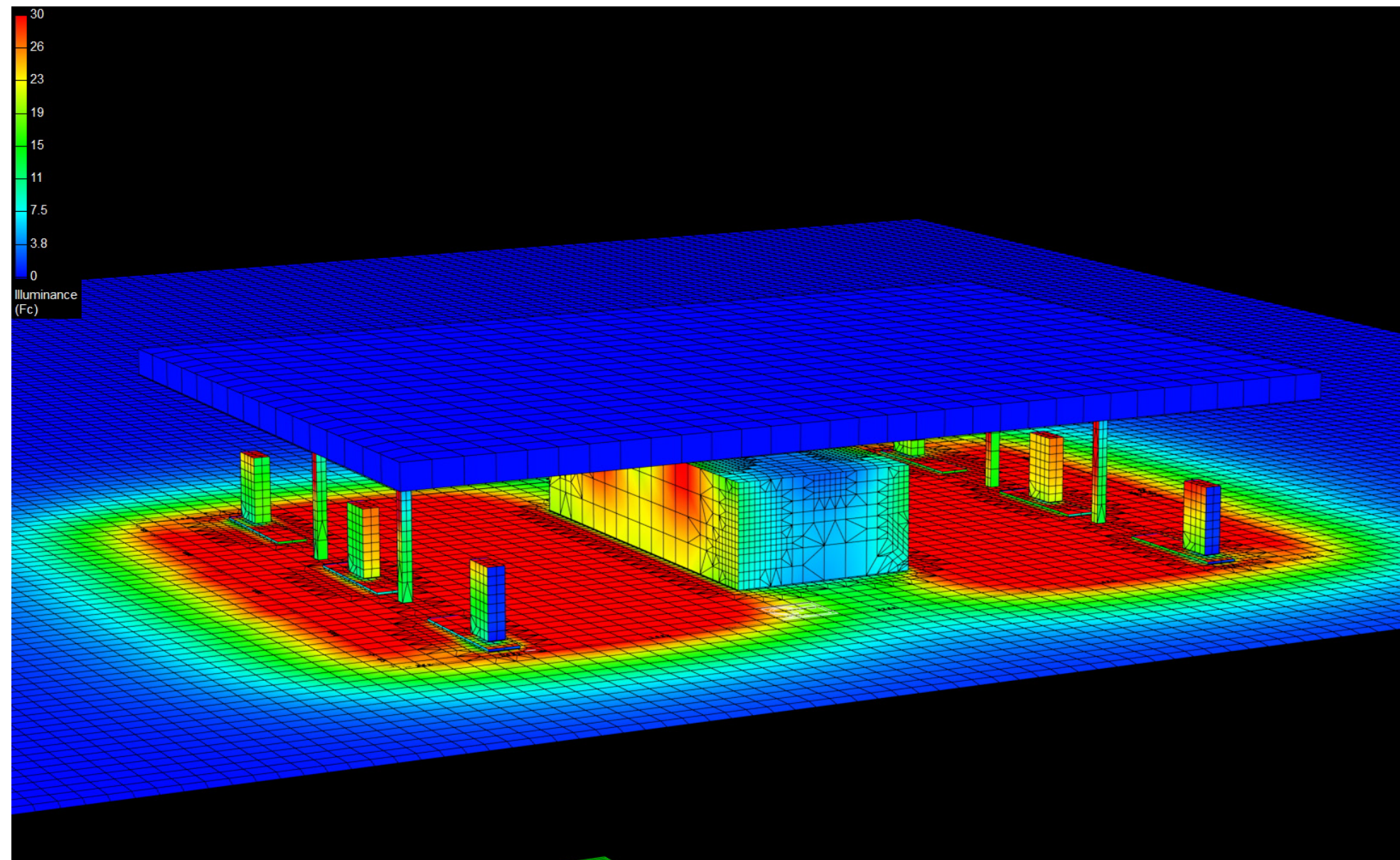
Pump Average Outer: 14.61

Transition Average: N/A

Total Watts: 2160

Watts/sq.ft.: 0.36

Lumens/sq.ft. : 53.6



# Canopy Style: 3+3 w/ Kiosk

Canopy Size: 64' x 94'

Initial Levels at grade and vertically on pumps.

## (24) SCV-LED-13L-SC-50

Fixture Lumens: 13,444

Fixture Watts: 90

Lumens/Watt: 149

Mounting Height: 15'

## Calculation Summary

Canopy Average: 37.78

Pump Average Inner: 23.30

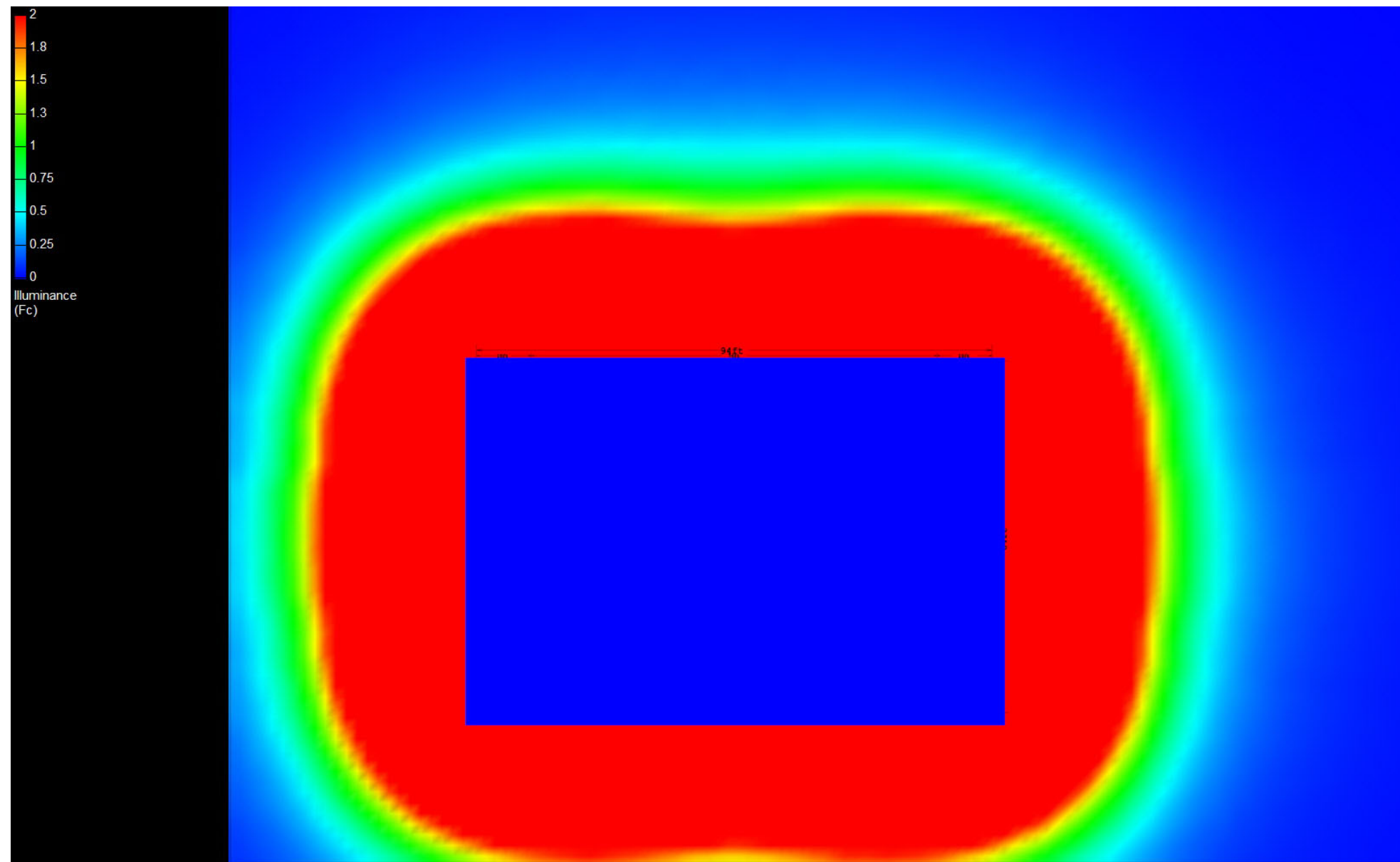
Pump Average Outer: 14.61

Transition Average: N/A

Total Watts: 2160

Watts/sq.ft.: 0.36

Lumens/sq.ft. : 53.6





# Canopy Style: 3+3 w/ Kiosk

Canopy Size: 64' x 94'

Initial Levels at grade and vertically on pumps.

## (24) SCV-LED-13L-SC-50

Fixture Lumens: 13,444

Fixture Watts: 90

Lumens/Watt: 149

Mounting Height: 15'

## Calculation Summary

Canopy Average: 37.78

Pump Average Inner: 23.30

Pump Average Outer: 14.61

Transition Average: N/A

Total Watts: 2160

Watts/sq.ft.: 0.36

Lumens/sq.ft. : 53.6

