

Canopy Style: 2+2+1+2+2 w/ Kiosk

Canopy Size: 43' x 160'

Initial Levels at grade and vertically on pumps.

(30) SCV-LED-20L-SC-50

Fixture Lumens: 20,234

Fixture Watts: 133

Lumens/Watt: 152

Mounting Height: 15'

Calculation Summary

Canopy Average: 58.98

Pump Average Inner: 32.34

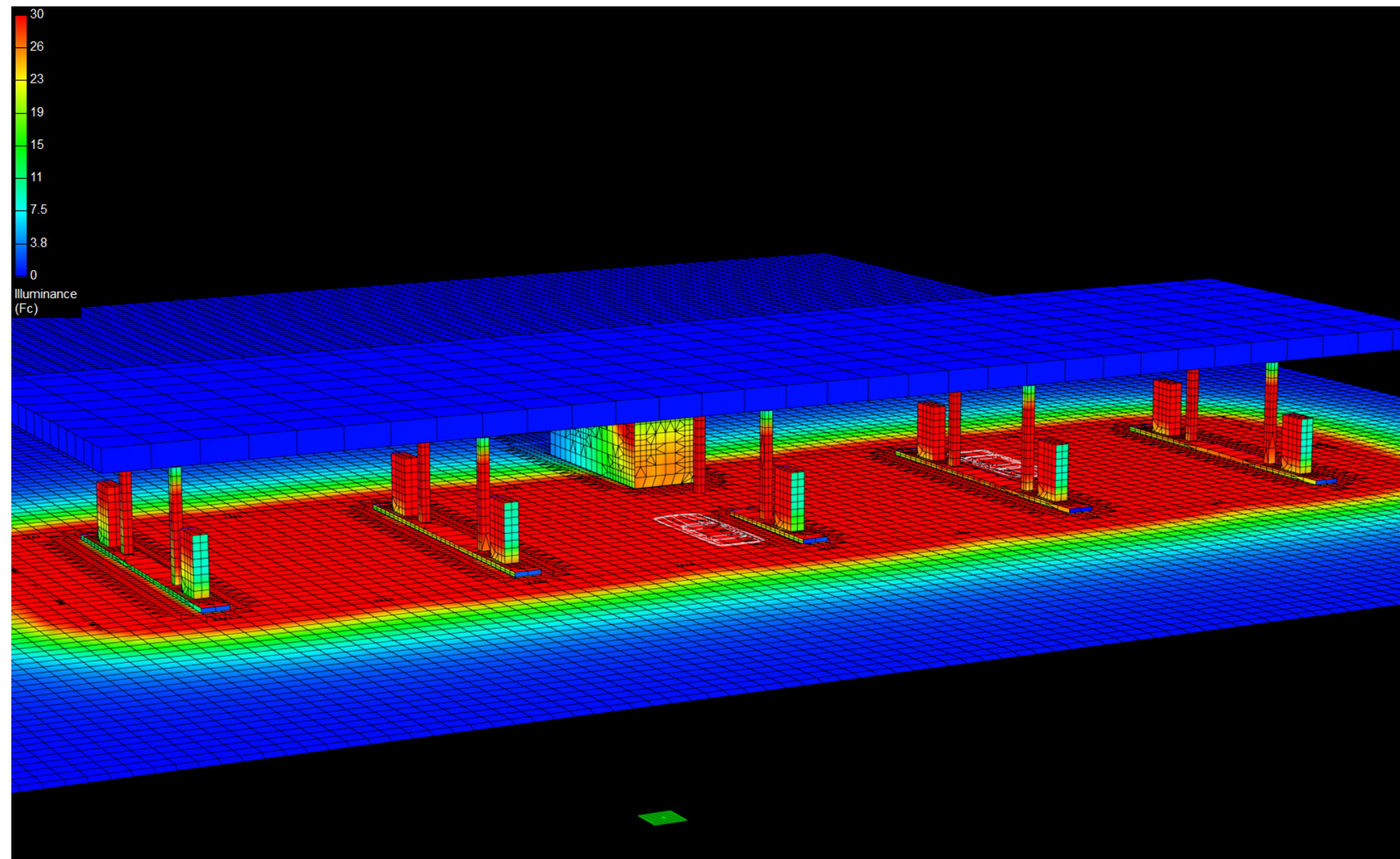
Pump Average Outer: 25.82

Transition Average: N/A

Total Watts: 3990

Watts/sq.ft.: 0.58

Lumens/sq.ft. : 88.2



Canopy Style: 2+2+1+2+2 w/ Kiosk

Canopy Size: 43' x 160'

Initial Levels at grade and vertically on pumps.

(30) SCV-LED-20L-SC-50

Fixture Lumens: 20,234

Fixture Watts: 133

Lumens/Watt: 152

Mounting Height: 15'

Calculation Summary

Canopy Average: 58.98

Pump Average Inner: 32.34

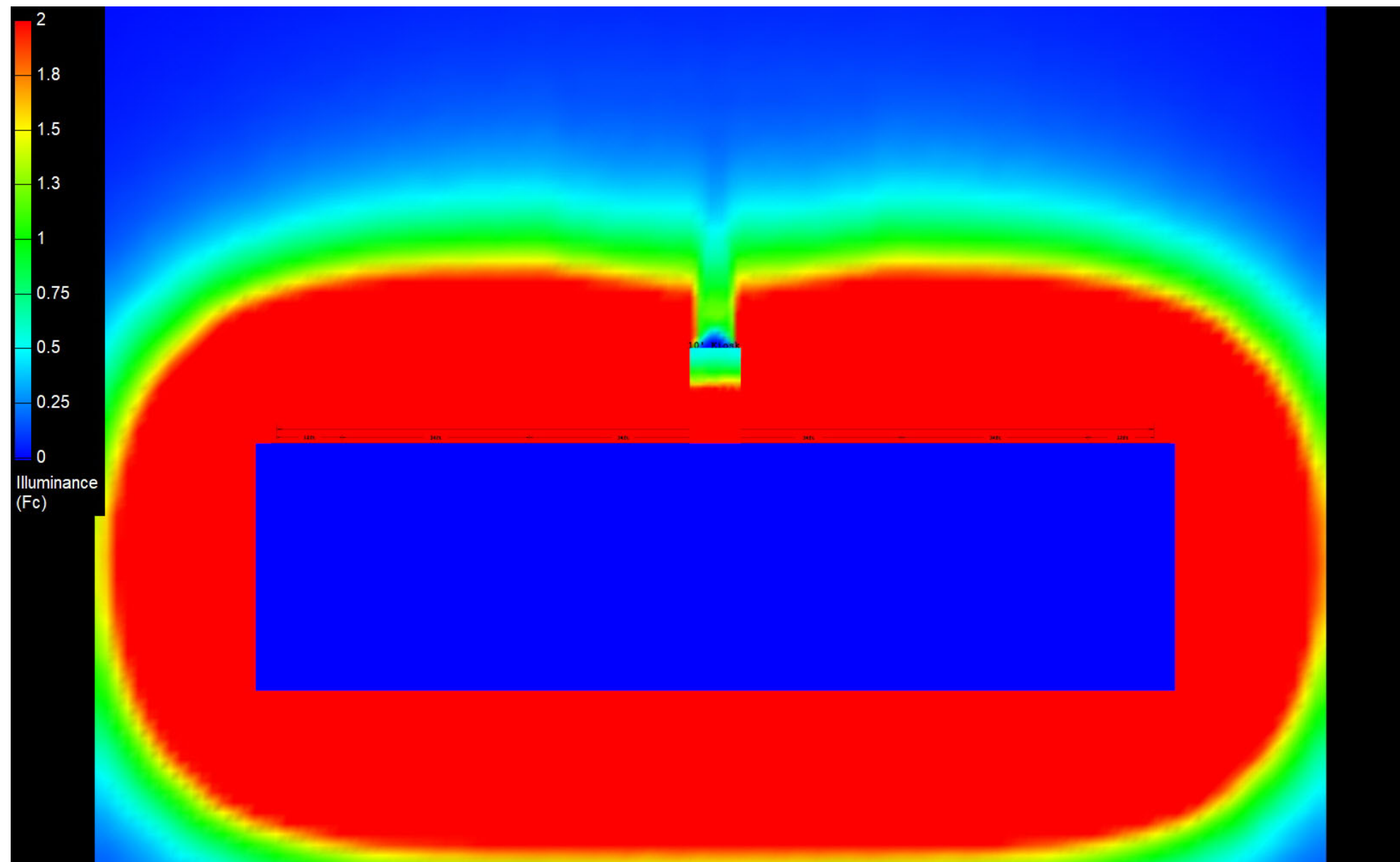
Pump Average Outer: 25.82

Transition Average: N/A

Total Watts: 3990

Watts/sq.ft.: 0.58

Lumens/sq.ft. : 88.2



Canopy Style: 2+2+1+2+2 w/ Kiosk

Canopy Size: 43' x 160'

Initial Levels at grade and vertically on pumps.

(30) SCV-LED-20L-SC-50

Fixture Lumens: 20,234

Fixture Watts: 133

Lumens/Watt: 152

Mounting Height: 15'

Calculation Summary

Canopy Average: 58.98

Pump Average Inner: 32.34

Pump Average Outer: 25.82

Transition Average: N/A

Total Watts: 3990

Watts/sq.ft.: 0.58

Lumens/sq.ft. : 88.2

