

# Canopy Style: 3 x 3 Stacked

Canopy Size: 40' x 92'

Initial Levels at grade and vertically on pumps.

## (18) SCM-LED-20L-SC-50

Fixture Lumens: 19,989

Fixture Watts: 145.5

Lumens/Watt: 137

Mounting Height: 15'

## Calculation Summary

Canopy Average: 56.41

Pump Average Inner: 36.61

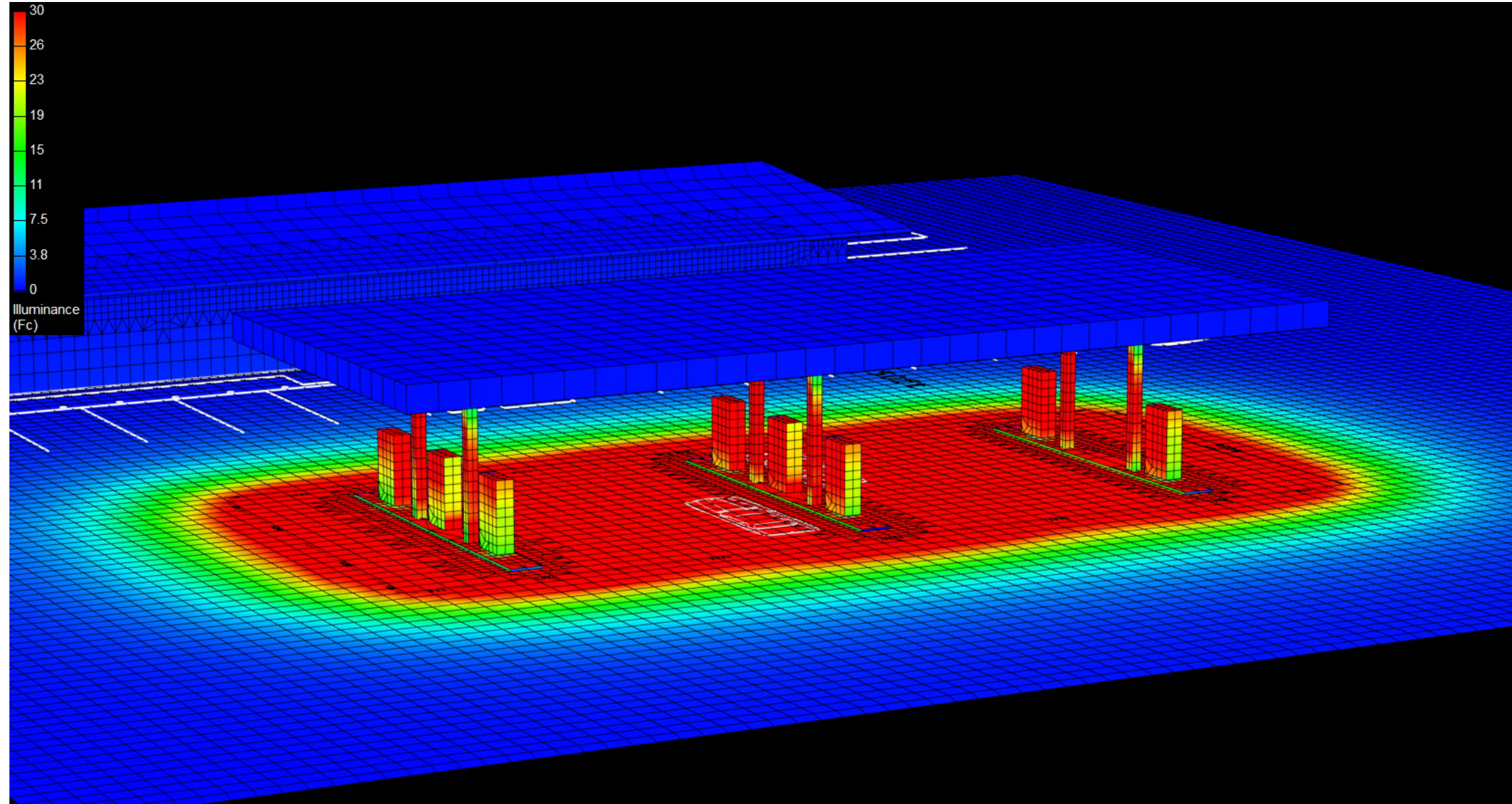
Pump Average Outer: 23.63

Transition Average: 5.70

Total Watts: 2619

Watts/sq.ft.: 0.71

Lumens/sq.ft. : 97.7





# Canopy Style: 3 x 3 Stacked

Canopy Size: 40' x 92'

Initial Levels at grade and vertically on pumps.

## (18) SCM-LED-20L-SC-50

Fixture Lumens: 19,989

Fixture Watts: 145.5

Lumens/Watt: 137

Mounting Height: 15'

## Calculation Summary

Canopy Average: 56.41

Pump Average Inner: 36.61

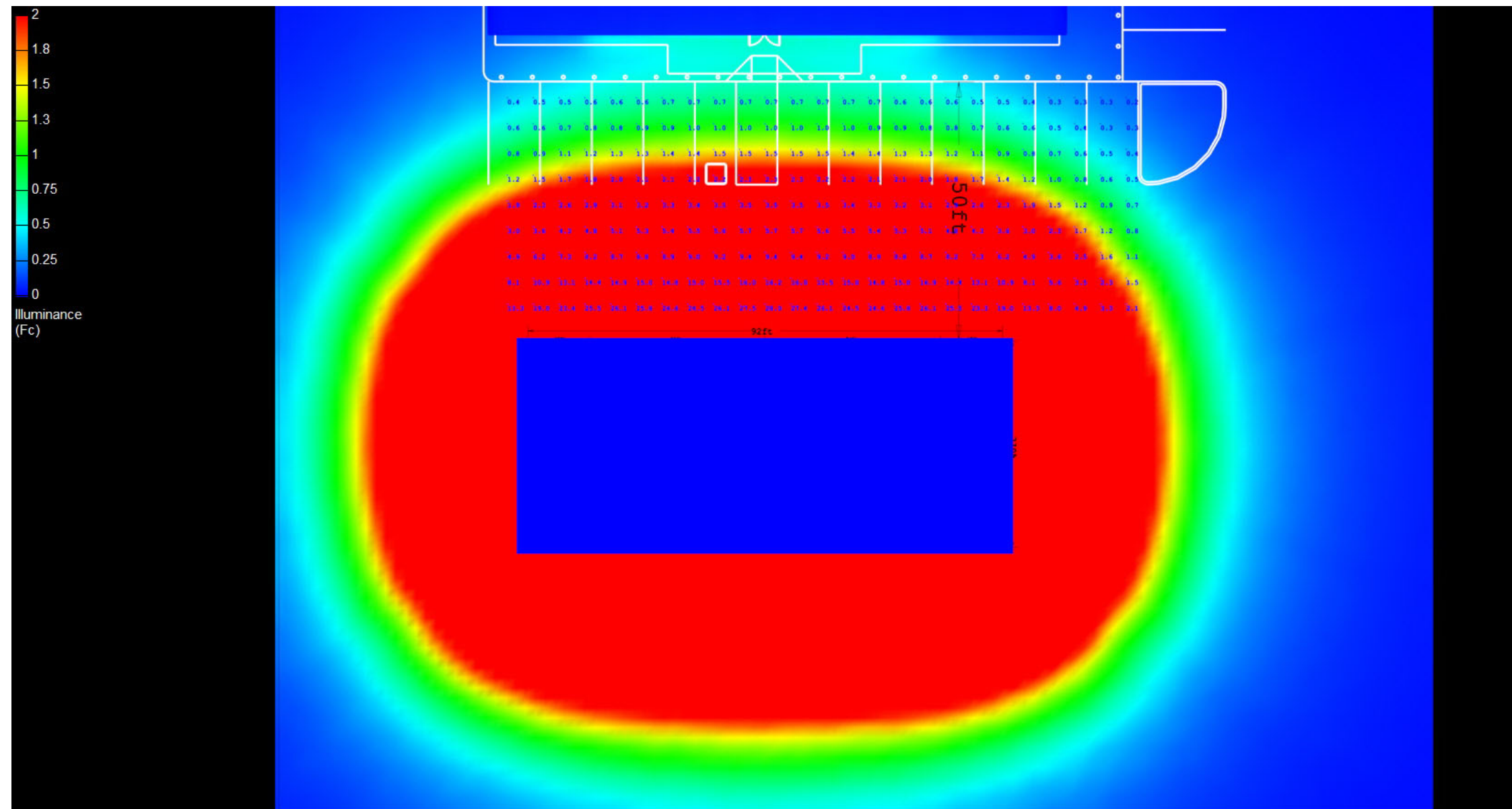
Pump Average Outer: 23.63

Transition Average: 5.70

Total Watts: 2619

Watts/sq.ft.: 0.71

Lumens/sq.ft. : 97.7



# Canopy Style: 3 x 3 Stacked

Canopy Size: 40' x 92'

Initial Levels at grade and vertically on pumps.

## (18) SCM-LED-20L-SC-50

Fixture Lumens: 19,989

Fixture Watts: 145.5

Lumens/Watt: 137

Mounting Height: 15'

## Calculation Summary

Canopy Average: 56.41

Pump Average Inner: 36.61

Pump Average Outer: 23.63

Transition Average: 5.70

Total Watts: 2619

Watts/sq.ft.: 0.71

Lumens/sq.ft. : 97.7

