

Canopy Style: 3 x 3 Stacked

Canopy Size: 40' x 92'

Initial Levels at grade and vertically on pumps.

(12) SCM-LED-13L-SC-50

Fixture Lumens: 13,039

Fixture Watts: 84.7

Lumens/Watt: 154

Mounting Height: 15'

Calculation Summary

Canopy Average: 24.33

Pump Average Inner: 11.26

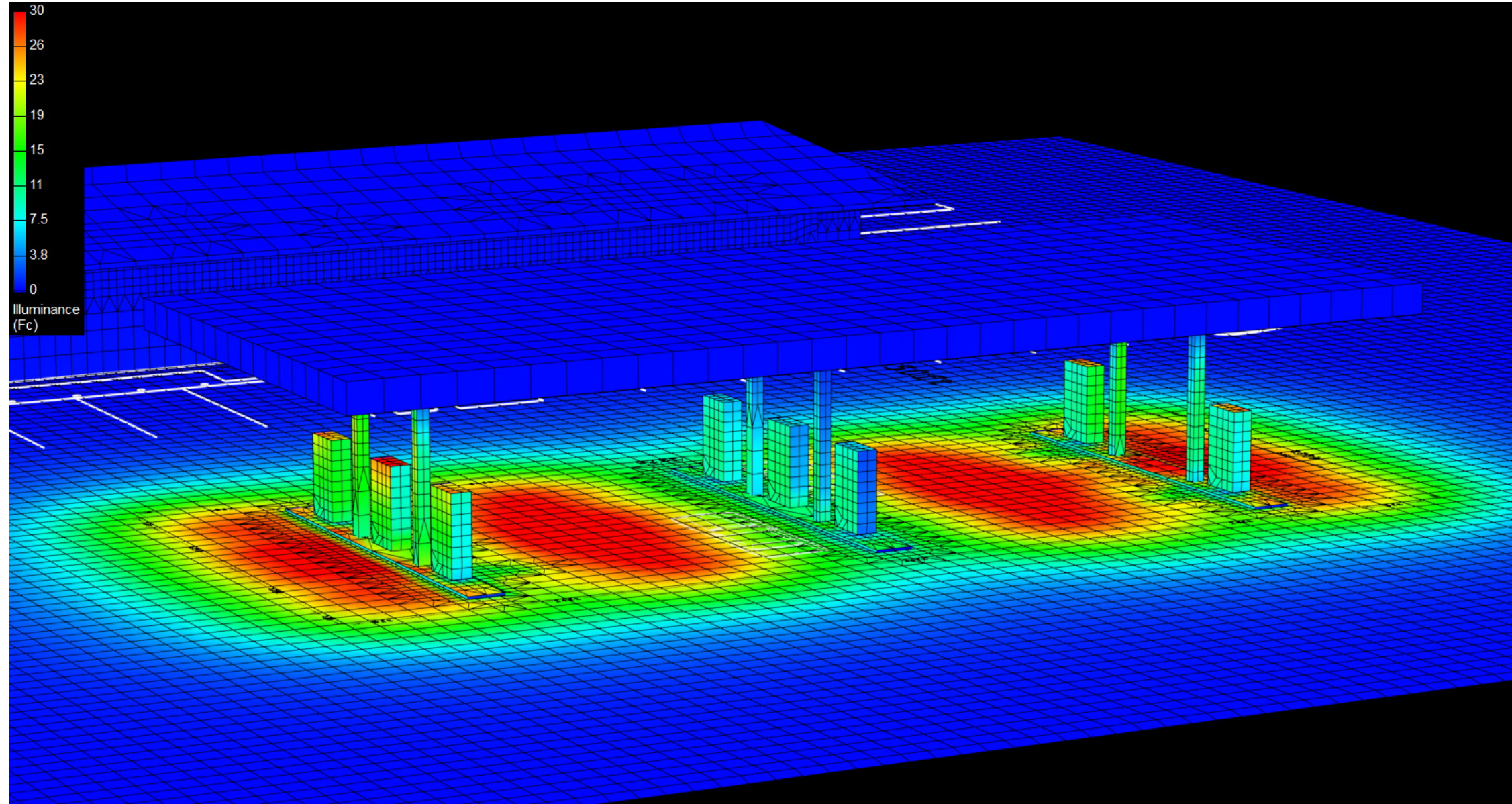
Pump Average Outer: 15.22

Transition Average: 2.41

Total Watts: 1016.4

Watts/sq.ft.: 0.28

Lumens/sq.ft. : 42.5



Canopy Style: 3 x 3 Stacked

Canopy Size: 40' x 92'

Initial Levels at grade and vertically on pumps.

(12) SCM-LED-13L-SC-50

Fixture Lumens: 13,039

Fixture Watts: 84.7

Lumens/Watt: 154

Mounting Height: 15'

Calculation Summary

Canopy Average: 24.33

Pump Average Inner: 11.26

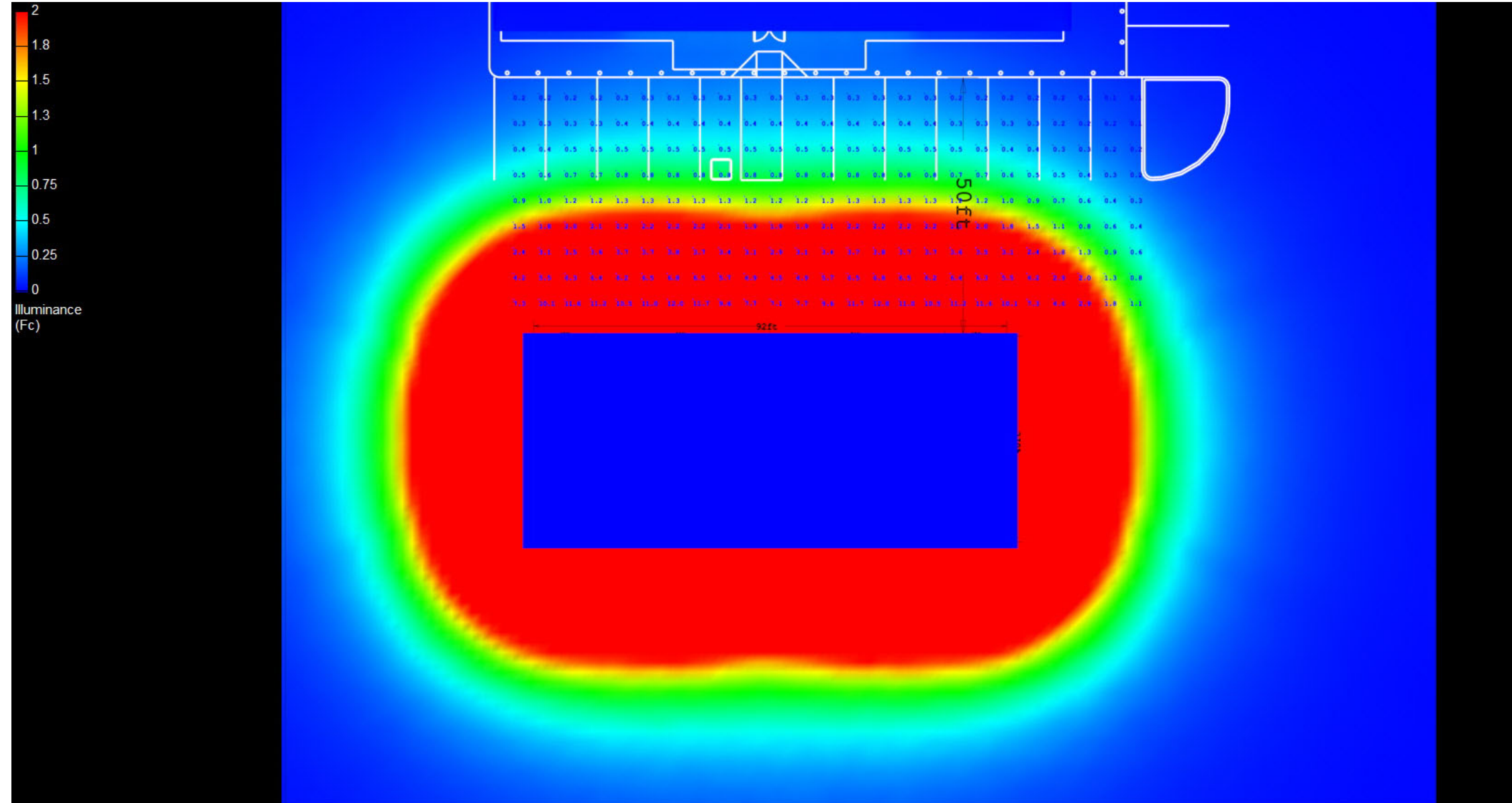
Pump Average Outer: 15.22

Transition Average: 2.41

Total Watts: 1016.4

Watts/sq.ft.: 0.28

Lumens/sq.ft. : 42.5



Canopy Style: 3 x 3 Stacked

Canopy Size: 40' x 92'

Initial Levels at grade and vertically on pumps.

(12) SCM-LED-13L-SC-50

Fixture Lumens: 13,039

Fixture Watts: 84.7

Lumens/Watt: 154

Mounting Height: 15'

Calculation Summary

Canopy Average: 24.33

Pump Average Inner: 11.26

Pump Average Outer: 15.22

Transition Average: 2.41

Total Watts: 1016.4

Watts/sq.ft.: 0.28

Lumens/sq.ft. : 42.5



SCM

