

Canopy Style: 3 x 2 Stacked

Canopy Size: 45' x 86'

Initial Levels at grade and vertically on pumps.

(12) SCM-LED-15L-SC-50

Fixture Lumens: 15,631

Fixture Watts: 111.1

Lumens/Watt: 141

Mounting Height: 15'

Calculation Summary

Canopy Average: 28.05

Pump Average Inner: 11.37

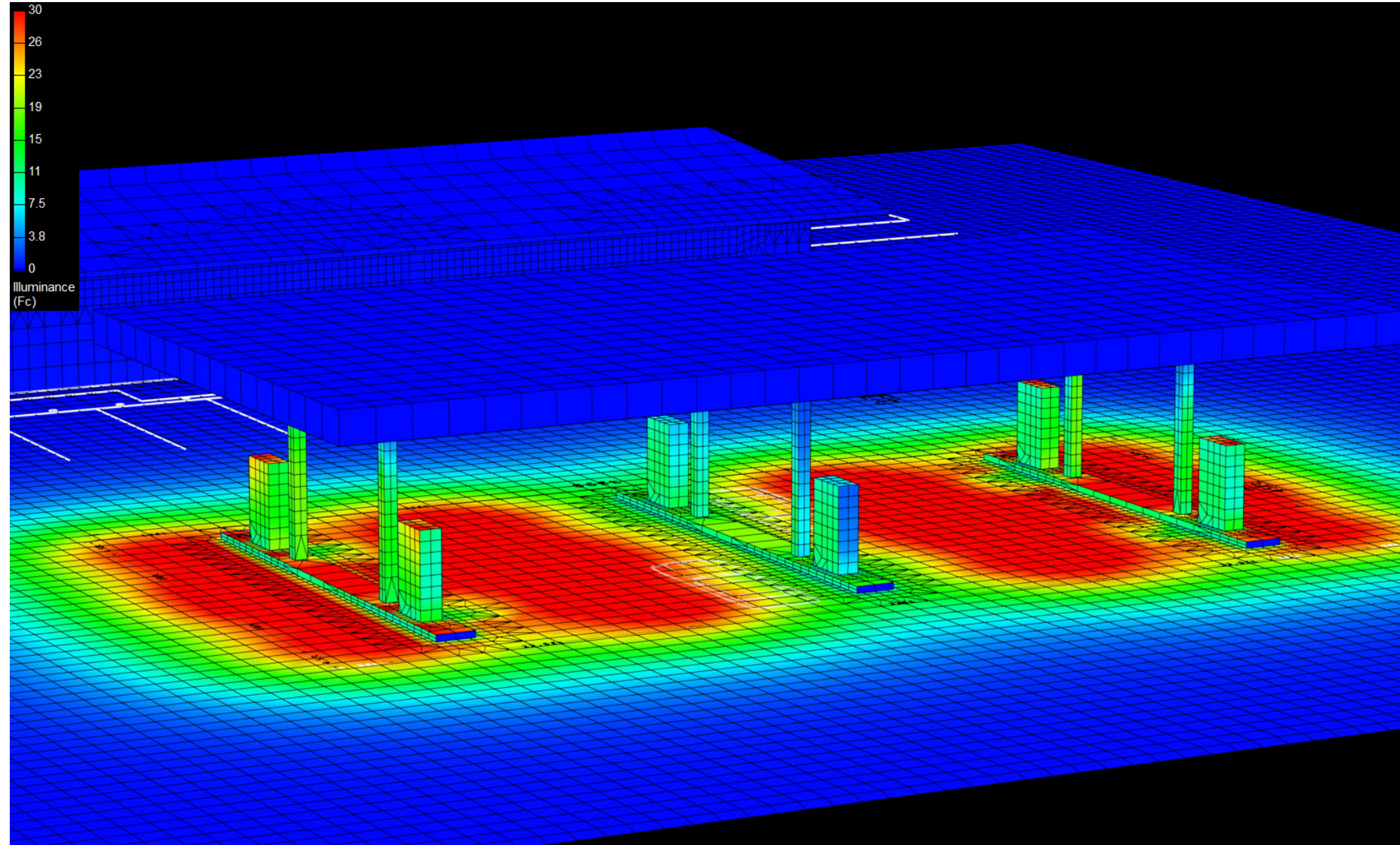
Pump Average Outer: 21.97

Transition Average: 2.54

Total Watts: 1333

Watts/sq.ft.: 0.34

Lumens/sq.ft. : 48



Canopy Style: 3 x 2 Stacked

Canopy Size: 45' x 86'

Initial Levels at grade and vertically on pumps.

(12) SCM-LED-15L-SC-50

Fixture Lumens: 15,631

Fixture Watts: 111.1

Lumens/Watt: 141

Mounting Height: 15'

Calculation Summary

Canopy Average: 28.05

Pump Average Inner: 11.37

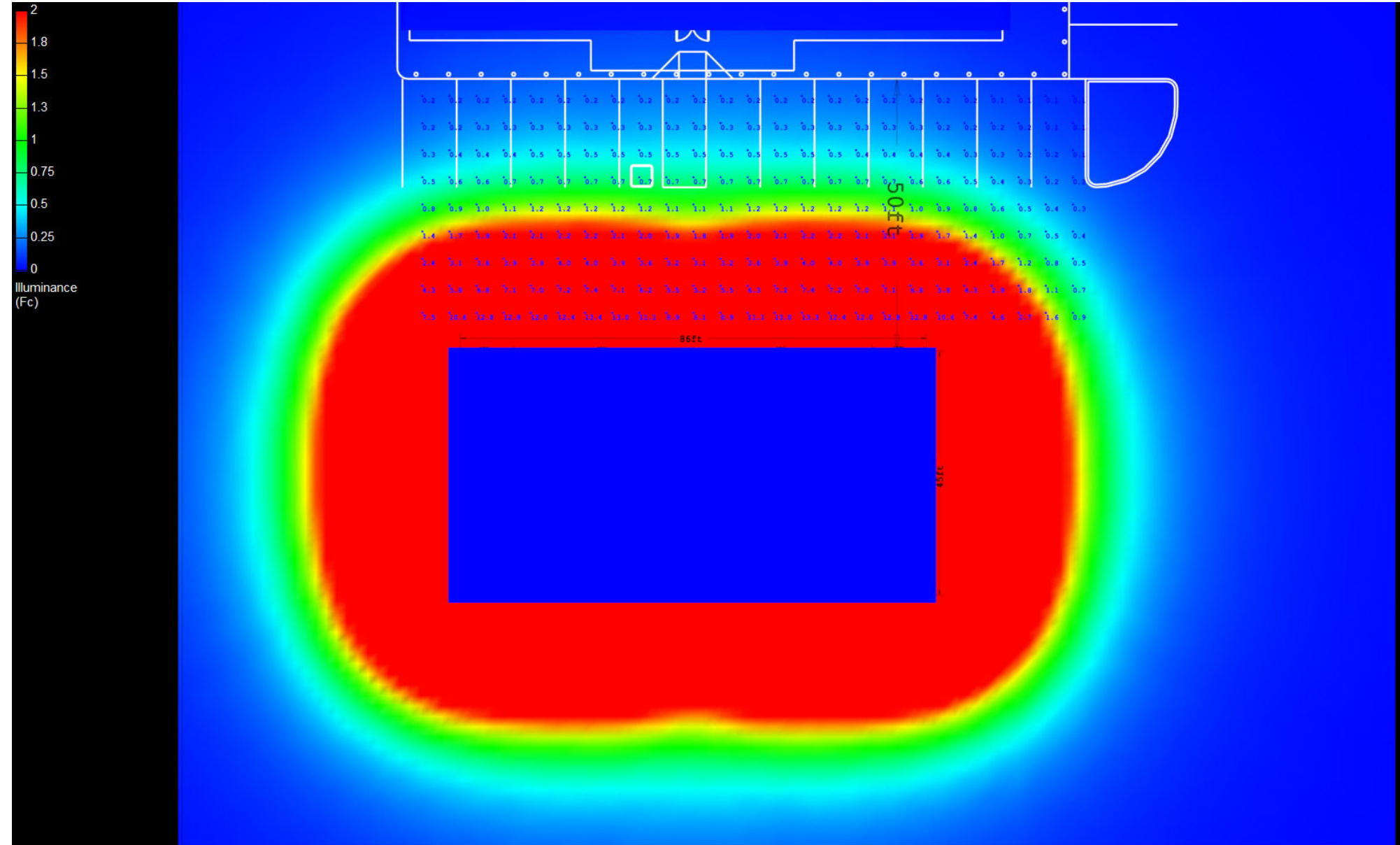
Pump Average Outer: 21.97

Transition Average: 2.54

Total Watts: 1333

Watts/sq.ft.: 0.34

Lumens/sq.ft. : 48



Canopy Style: 3 x 2 Stacked

Canopy Size: 45' x 86'

Initial Levels at grade and vertically on pumps.

(12) SCM-LED-15L-SC-50

Fixture Lumens: 15,631

Fixture Watts: 111.1

Lumens/Watt: 141

Mounting Height: 15'

Calculation Summary

Canopy Average: 28.05

Pump Average Inner: 11.37

Pump Average Outer: 21.97

Transition Average: 2.54

Total Watts: 1333

Watts/sq.ft.: 0.34

Lumens/sq.ft. : 48



SCM

