

# Canopy Style: 3 x 2 Stacked

Canopy Size: 45' x 86'

Initial Levels at grade and vertically on pumps.

## (12) SCM-LED-13L-SC-50

Fixture Lumens: 13,039

Fixture Watts: 84.7

Lumens/Watt: 154

Mounting Height: 15'

## Calculation Summary

Canopy Average: 22.93

Pump Average Inner: 9.85

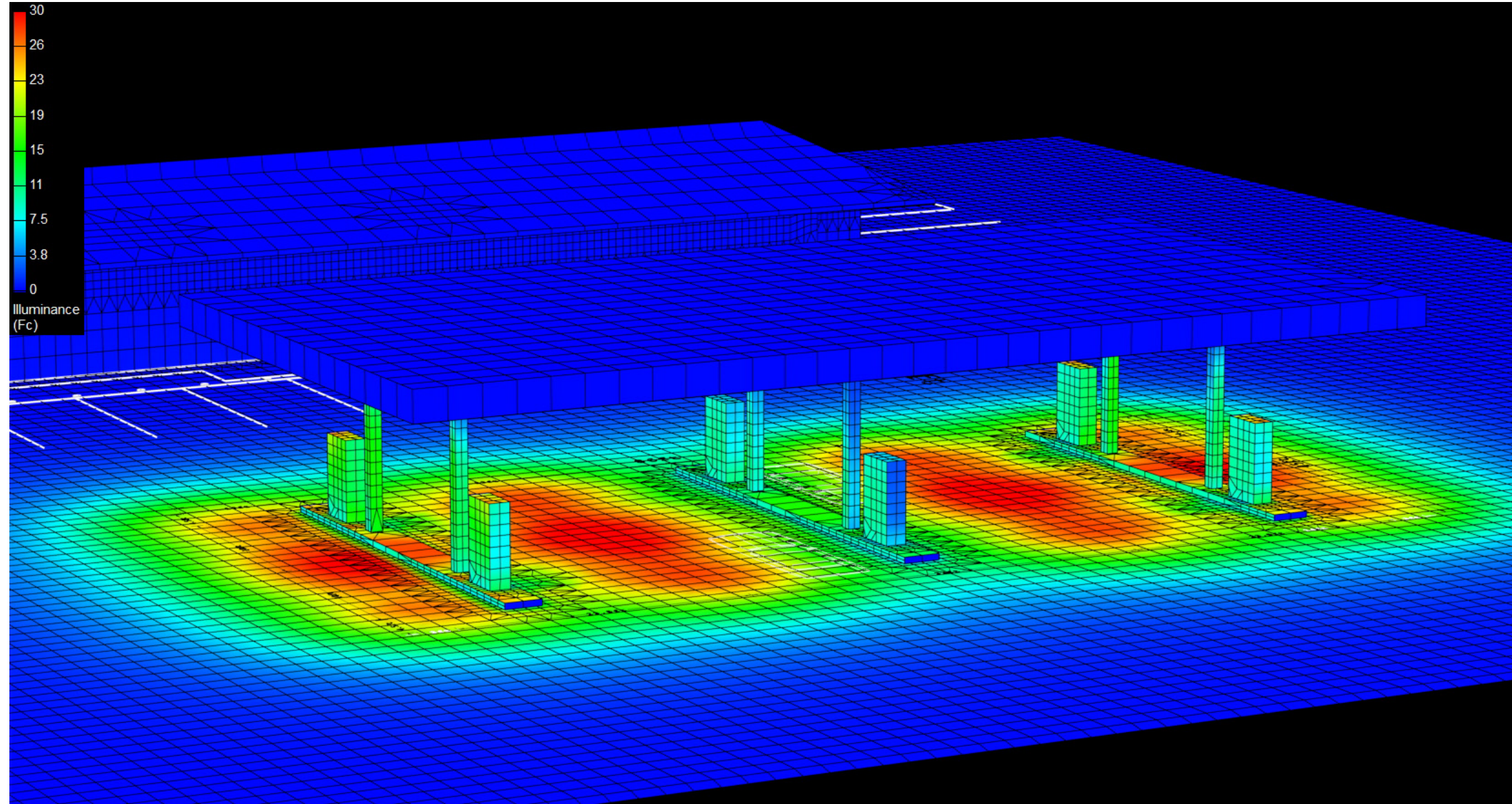
Pump Average Outer: 14.44

Transition Average: 2.24

Total Watts: 1016.4

Watts/sq.ft.: 0.26

Lumens/sq.ft. : 40.4



# Canopy Style: 3 x 2 Stacked

Canopy Size: 45' x 86'

Initial Levels at grade and vertically on pumps.

## (12) SCM-LED-13L-SC-50

Fixture Lumens: 13,039

Fixture Watts: 84.7

Lumens/Watt: 154

Mounting Height: 15'

## Calculation Summary

Canopy Average: 22.93

Pump Average Inner: 9.85

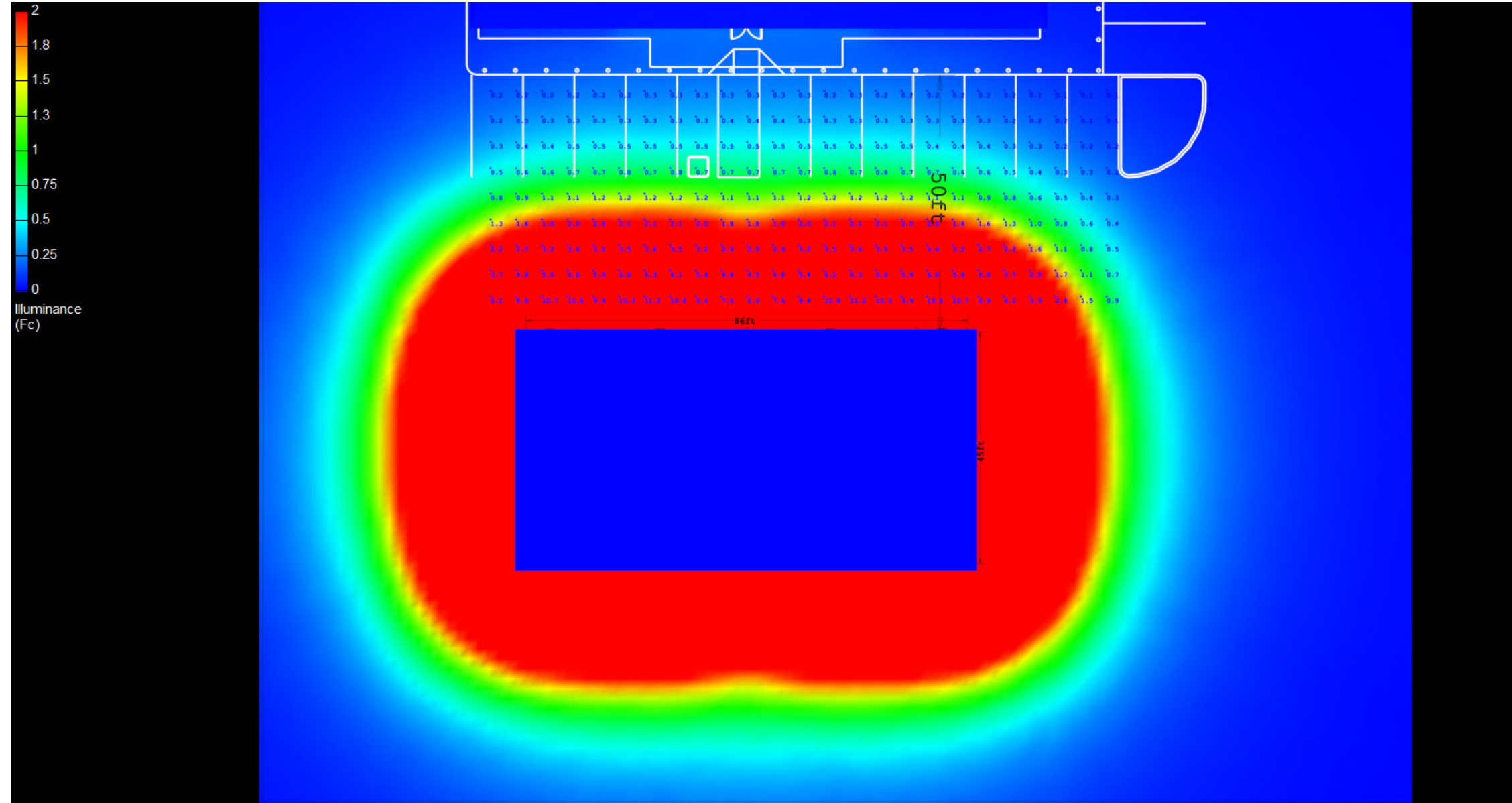
Pump Average Outer: 14.44

Transition Average: 2.24

Total Watts: 1016.4

Watts/sq.ft.: 0.26

Lumens/sq.ft. : 40.4



# Canopy Style: 3 x 2 Stacked

Canopy Size: 45' x 86'

Initial Levels at grade and vertically on pumps.

## (12) SCM-LED-13L-SC-50

Fixture Lumens: 13,039

Fixture Watts: 84.7

Lumens/Watt: 154

Mounting Height: 15'

## Calculation Summary

Canopy Average: 22.93

Pump Average Inner: 9.85

Pump Average Outer: 14.44

Transition Average: 2.24

Total Watts: 1016.4

Watts/sq.ft.: 0.26

Lumens/sq.ft. : 40.4



SCM

