

Canopy Style: 3x 1 Inline w/ Kiosk

Canopy Size: 24' x 95'

Initial Levels at grade and vertically on pumps.

(10) SCM-LED-13L-SC-50

Fixture Lumens: 13,039

Fixture Watts: 84.7

Lumens/Watt: 154

Mounting Height: 15'

Calculation Summary

Canopy Average: 28.17

Pump Average Inner: 15.04

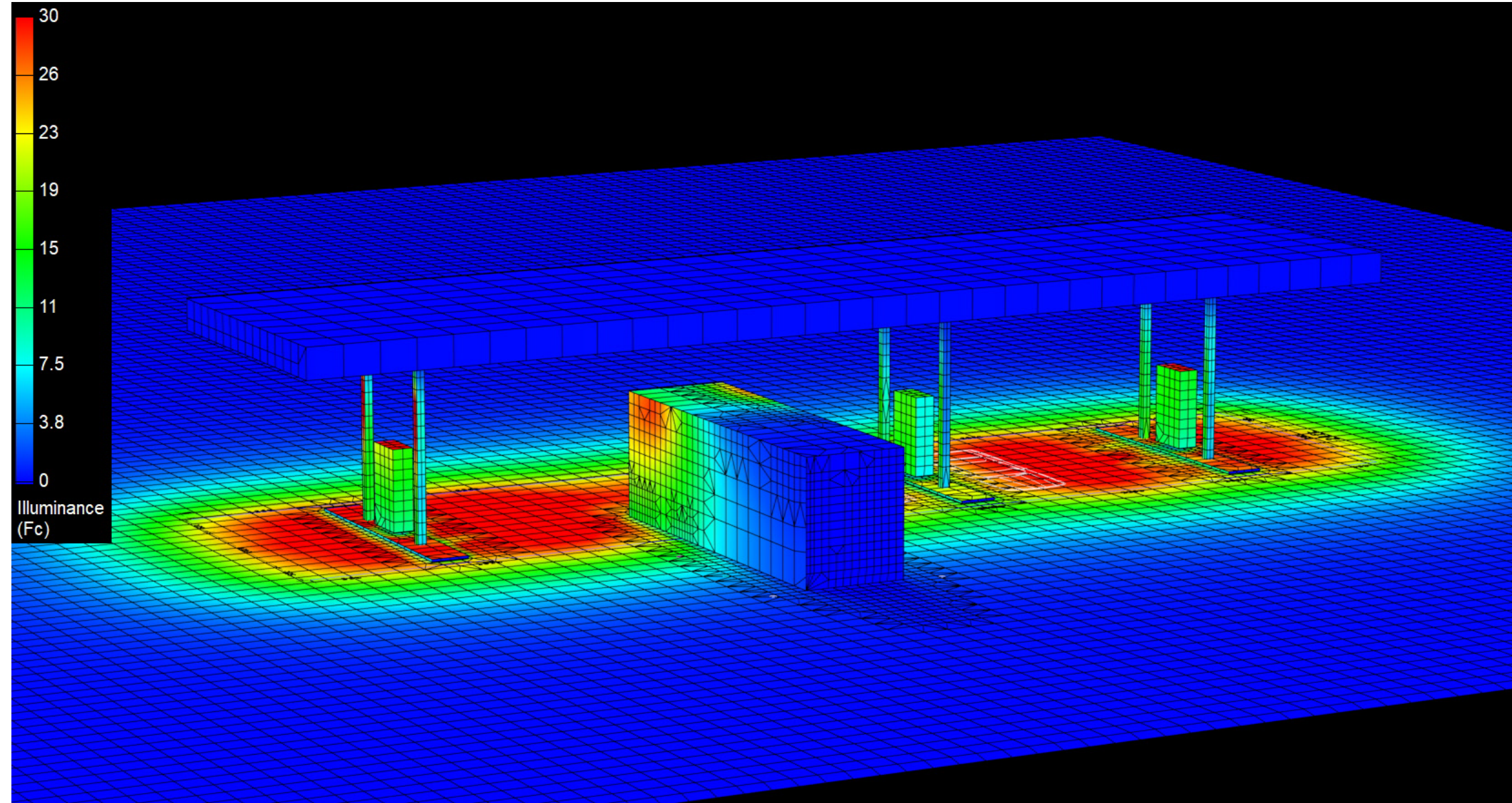
Pump Average Outer: 16.42

Transition Average: N/A

Total Watts: 847

Watts/sq.ft.: 0.37

Lumens/sq.ft. : 57.2



Canopy Style: 3x 1 Inline w/ Kiosk

Canopy Size: 24' x 95'

Initial Levels at grade and vertically on pumps.

(10) SCM-LED-13L-SC-50

Fixture Lumens: 13,039

Fixture Watts: 84.7

Lumens/Watt: 154

Mounting Height: 15'

Calculation Summary

Canopy Average: 28.17

Pump Average Inner: 15.04

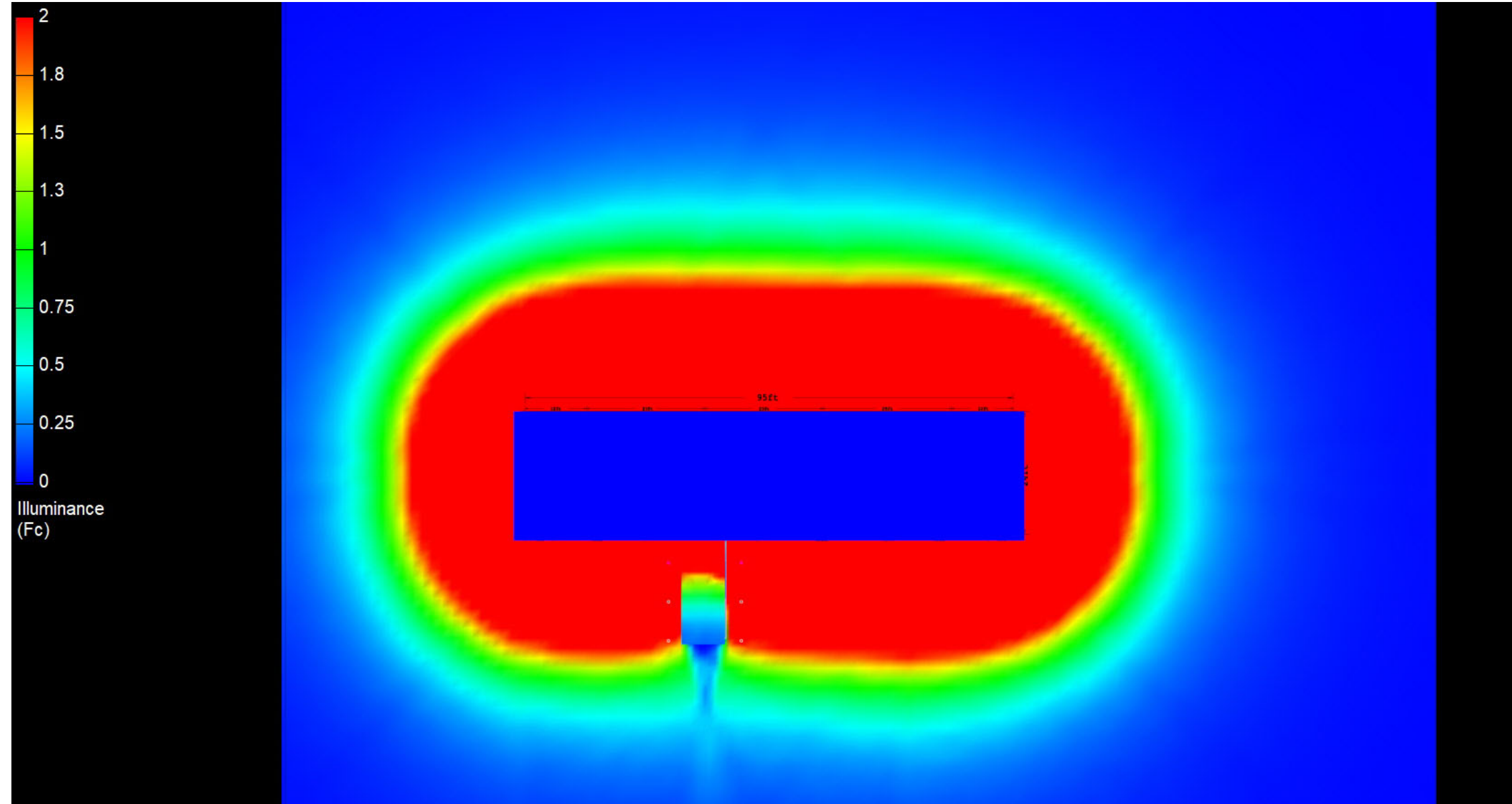
Pump Average Outer: 16.42

Transition Average: N/A

Total Watts: 847

Watts/sq.ft.: 0.37

Lumens/sq.ft. : 57.2



Canopy Style: 3x 1 Inline w/ Kiosk

Canopy Size: 24' x 95'

Initial Levels at grade and vertically on pumps.

(10) SCM-LED-13L-SC-50

Fixture Lumens: 13,039

Fixture Watts: 84.7

Lumens/Watt: 154

Mounting Height: 15'

Calculation Summary

Canopy Average: 28.17

Pump Average Inner: 15.04

Pump Average Outer: 16.42

Transition Average: N/A

Total Watts: 847

Watts/sq.ft.: 0.37

Lumens/sq.ft. : 57.2

