

# Canopy Style: 3 x 1 Inline w/ Kiosk

Canopy Size: 24' x 95'

Initial Levels at grade and vertically on pumps.

## (13) SCM-LED-13L-SC-50

Fixture Lumens: 13,039

Fixture Watts: 84.7

Lumens/Watt: 154

Mounting Height: 15'

## Calculation Summary

Canopy Average: 37.63

Pump Average Inner: 26.29

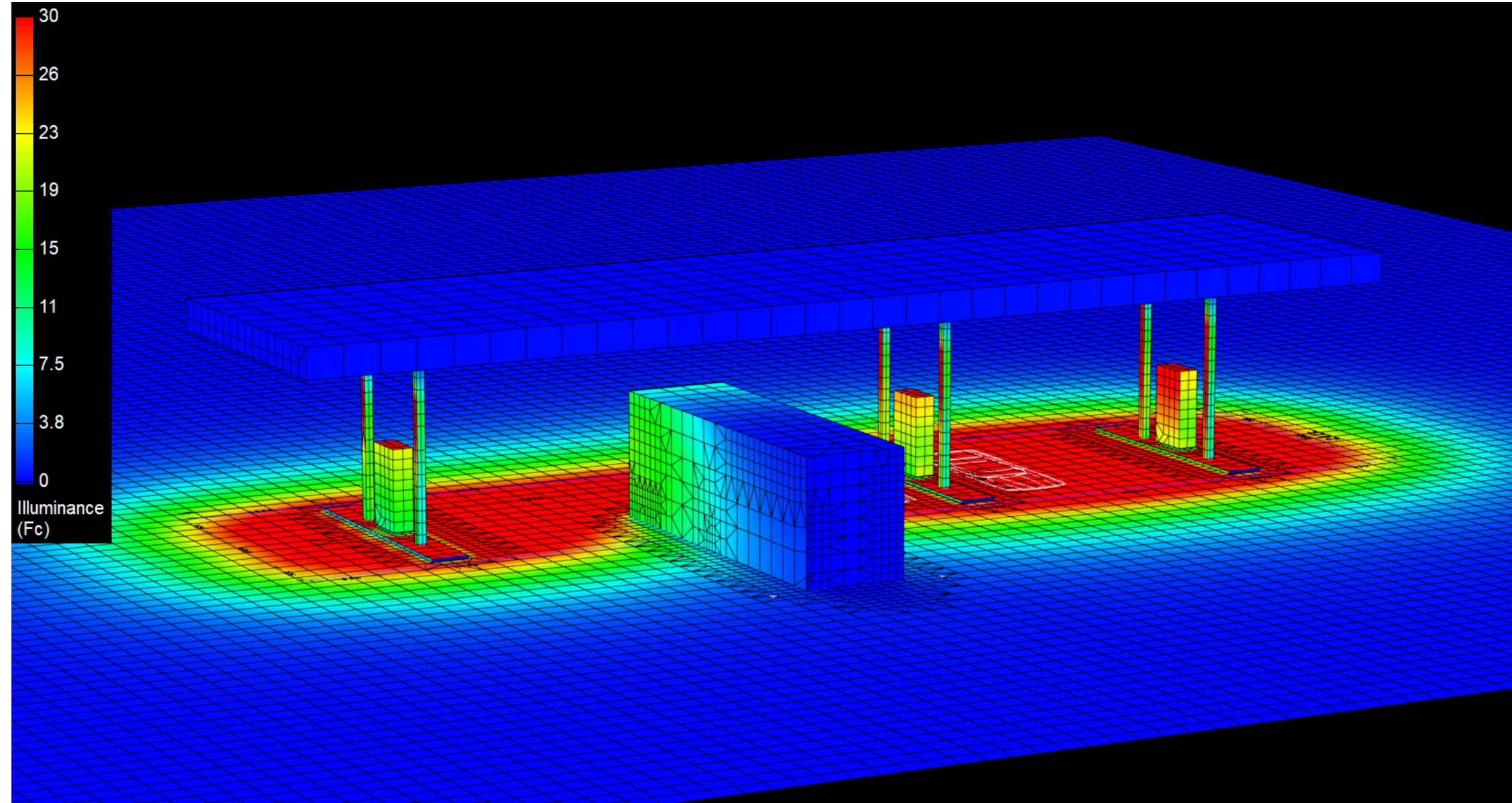
Pump Average Outer: 16.79

Transition Average: N/A

Total Watts: 1101

Watts/sq.ft.: 0.48

Lumens/sq.ft. :74.4



# Canopy Style: 3 x 1 Inline w/ Kiosk

Canopy Size: 24' x 95'

Initial Levels at grade and vertically on pumps.

## (13) SCM-LED-13L-SC-50

Fixture Lumens: 13,039

Fixture Watts: 84.7

Lumens/Watt: 154

Mounting Height: 15'

## Calculation Summary

Canopy Average: 37.63

Pump Average Inner: 26.29

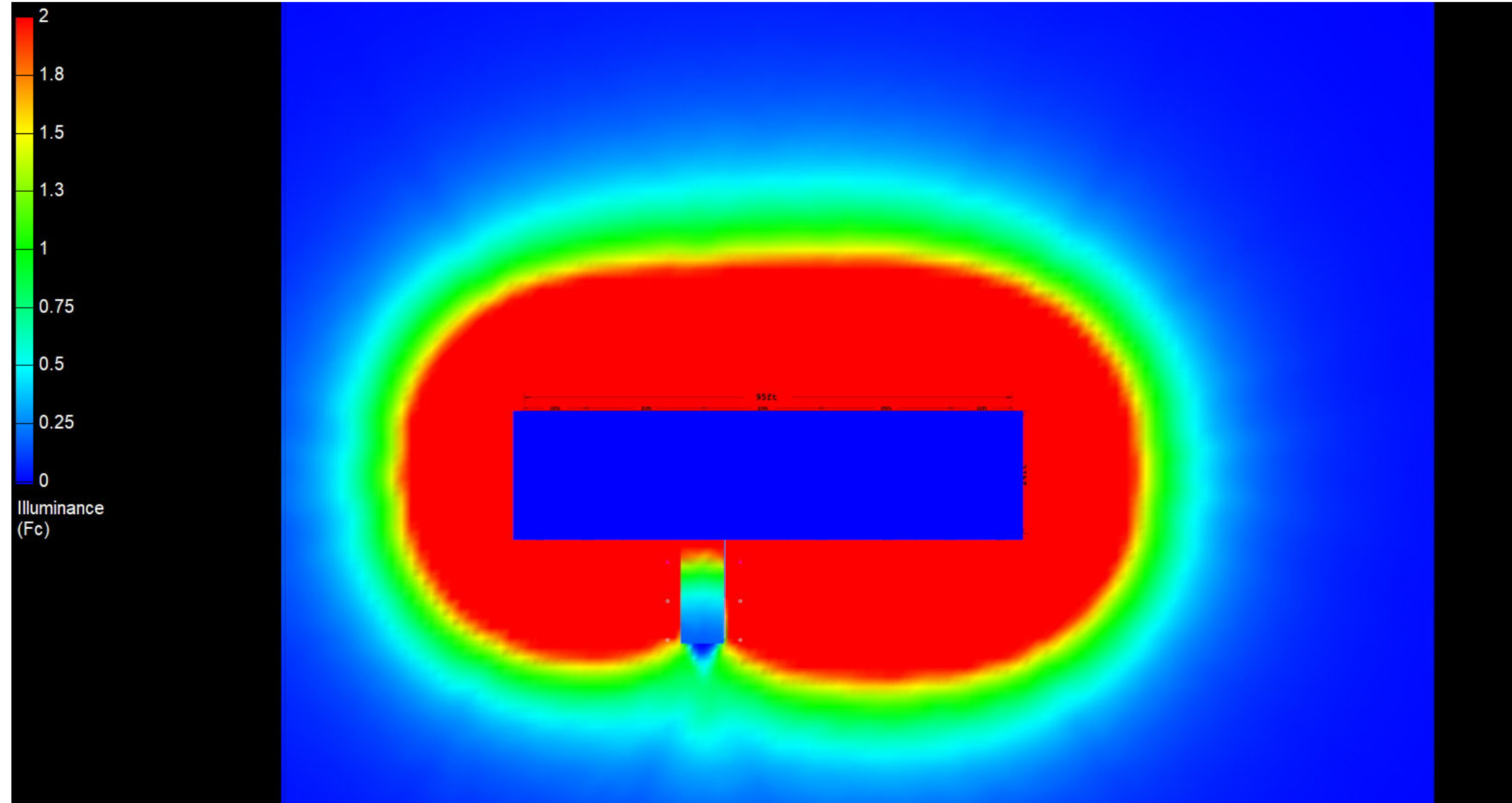
Pump Average Outer: 16.79

Transition Average: N/A

Total Watts: 1101

Watts/sq.ft.: 0.48

Lumens/sq.ft. :74.4



# Canopy Style: 3 x 1 Inline w/ Kiosk

Canopy Size: 24' x 95'

Initial Levels at grade and vertically on pumps.

## (13) SCM-LED-13L-SC-50

Fixture Lumens: 13,039

Fixture Watts: 84.7

Lumens/Watt: 154

Mounting Height: 15'

## Calculation Summary

Canopy Average: 37.63

Pump Average Inner: 26.29

Pump Average Outer: 16.79

Transition Average: N/A

Total Watts: 1101

Watts/sq.ft.: 0.48

Lumens/sq.ft.: 74.4

