

Canopy Style: 3 x 1 Inline w/ Kiosk

Canopy Size: 24' x 95'

Initial Levels at grade and vertically on pumps.

(13) SCM-LED-08L-SC-50

Fixture Lumens: 7,983

Fixture Watts: 55.4

Lumens/Watt: 144

Mounting Height: 15'

Calculation Summary

Canopy Average: 23.05

Pump Average Inner: 16.10

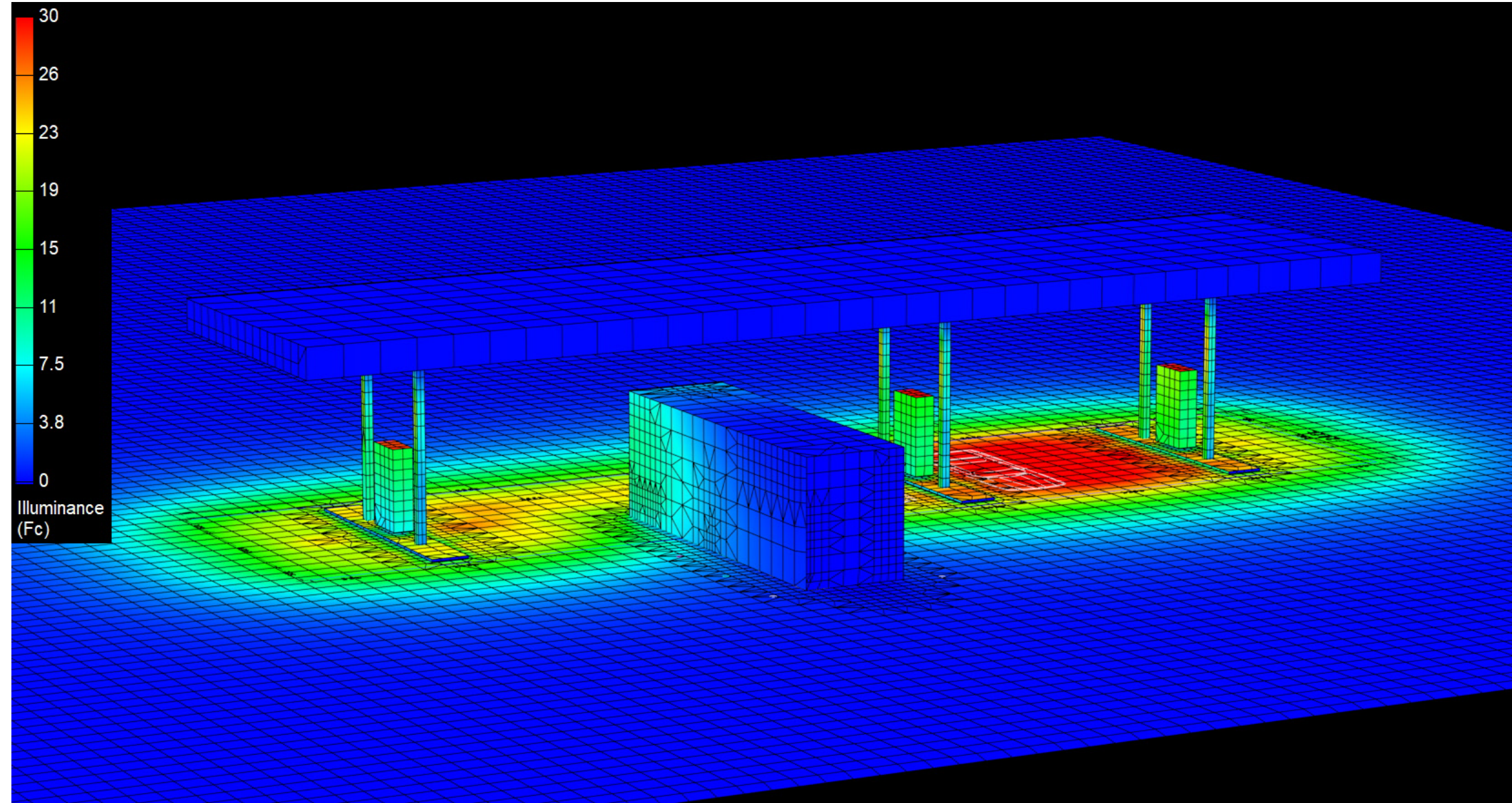
Pump Average Outer: 10.25

Transition Average: N/A

Total Watts: 720.2

Watts/sq.ft.: 0.32

Lumens/sq.ft. : 45.6



Canopy Style: 3 x 1 Inline w/ Kiosk

Canopy Size: 24' x 95'

Initial Levels at grade and vertically on pumps.

(13) SCM-LED-08L-SC-50

Fixture Lumens: 7,983

Fixture Watts: 55.4

Lumens/Watt: 144

Mounting Height: 15'

Calculation Summary

Canopy Average: 23.05

Pump Average Inner: 16.10

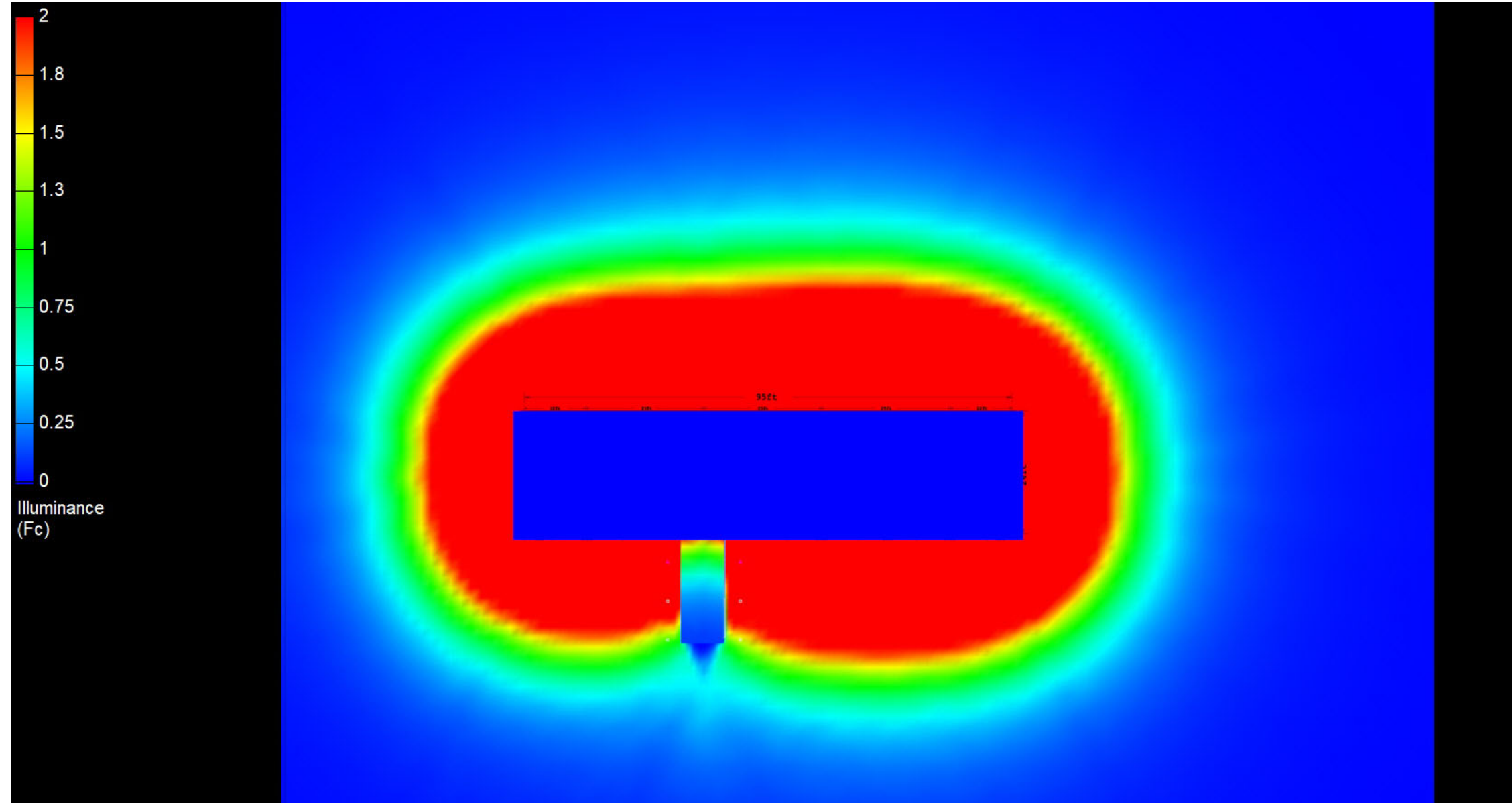
Pump Average Outer: 10.25

Transition Average: N/A

Total Watts: 720.2

Watts/sq.ft.: 0.32

Lumens/sq.ft. : 45.6



Canopy Style: 3 x 1 Inline w/ Kiosk

Canopy Size: 24' x 95'

Initial Levels at grade and vertically on pumps.

(13) SCM-LED-08L-SC-50

Fixture Lumens: 7,983

Fixture Watts: 55.4

Lumens/Watt: 144

Mounting Height: 15'

Calculation Summary

Canopy Average: 23.05

Pump Average Inner: 16.10

Pump Average Outer: 10.25

Transition Average: N/A

Total Watts: 720.2

Watts/sq.ft.: 0.32

Lumens/sq.ft. : 45.6

