

Canopy Style: 3 + 3 w/ Kiosk

Canopy Size: 64' x 94'

Initial Levels at grade and vertically on pumps.

(18) SCM-LED-20L-SC-50

Fixture Lumens: 19,989

Fixture Watts: 145.5

Lumens/Watt: 137

Mounting Height: 15'

Calculation Summary

Canopy Average: 39.49

Pump Average Inner: 20.11

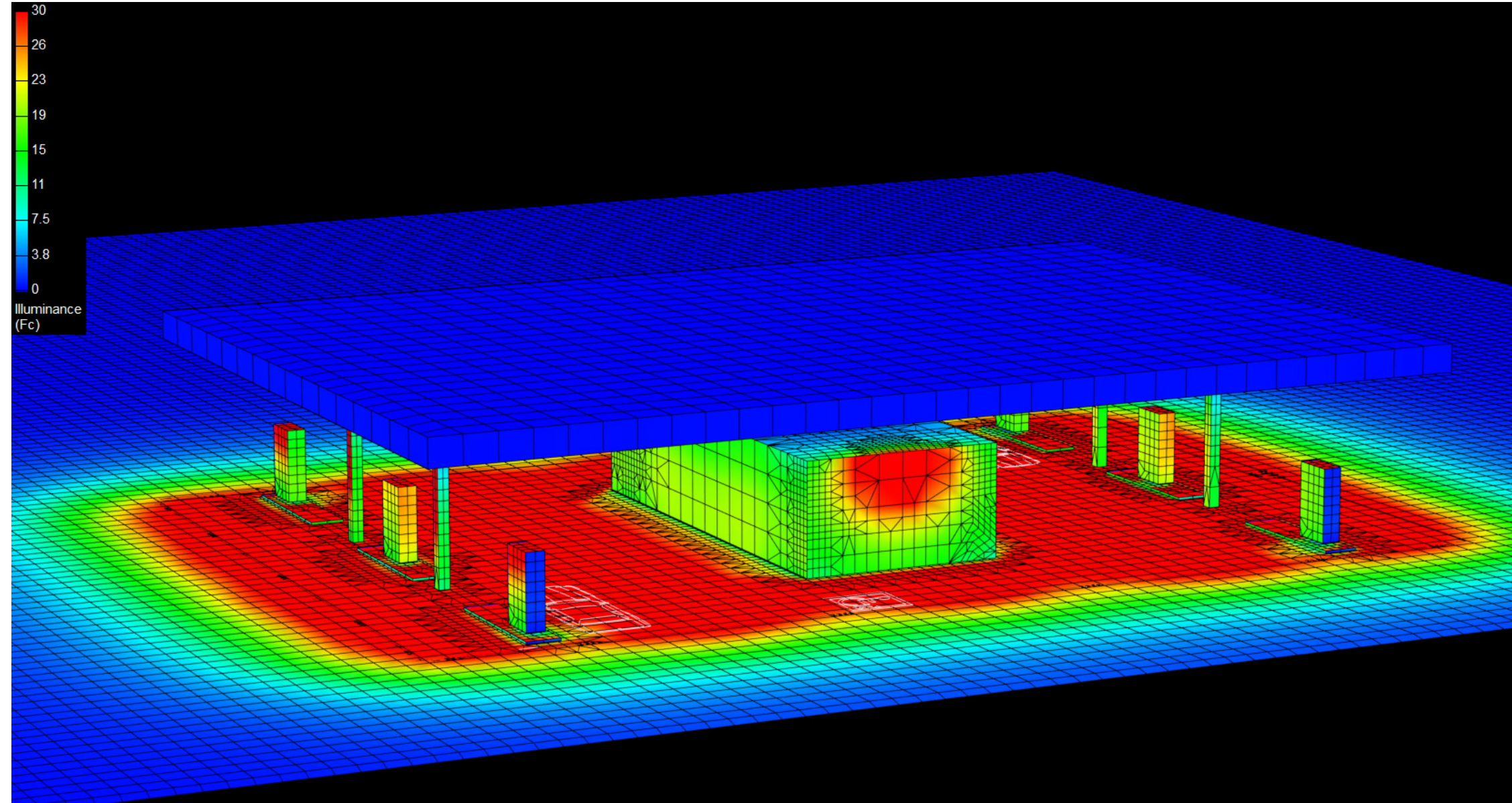
Pump Average Outer: 19.73

Transition Average: N/A

Total Watts: 2619

Watts/sq.ft.: 0.44

Lumens/sq.ft. : 59.8



Canopy Style: 3 + 3 w/ Kiosk

Canopy Size: 64' x 94'

Initial Levels at grade and vertically on pumps.

(18) SCM-LED-20L-SC-50

Fixture Lumens: 19,989

Fixture Watts: 145.5

Lumens/Watt: 137

Mounting Height: 15'

Calculation Summary

Canopy Average: 39.49

Pump Average Inner: 20.11

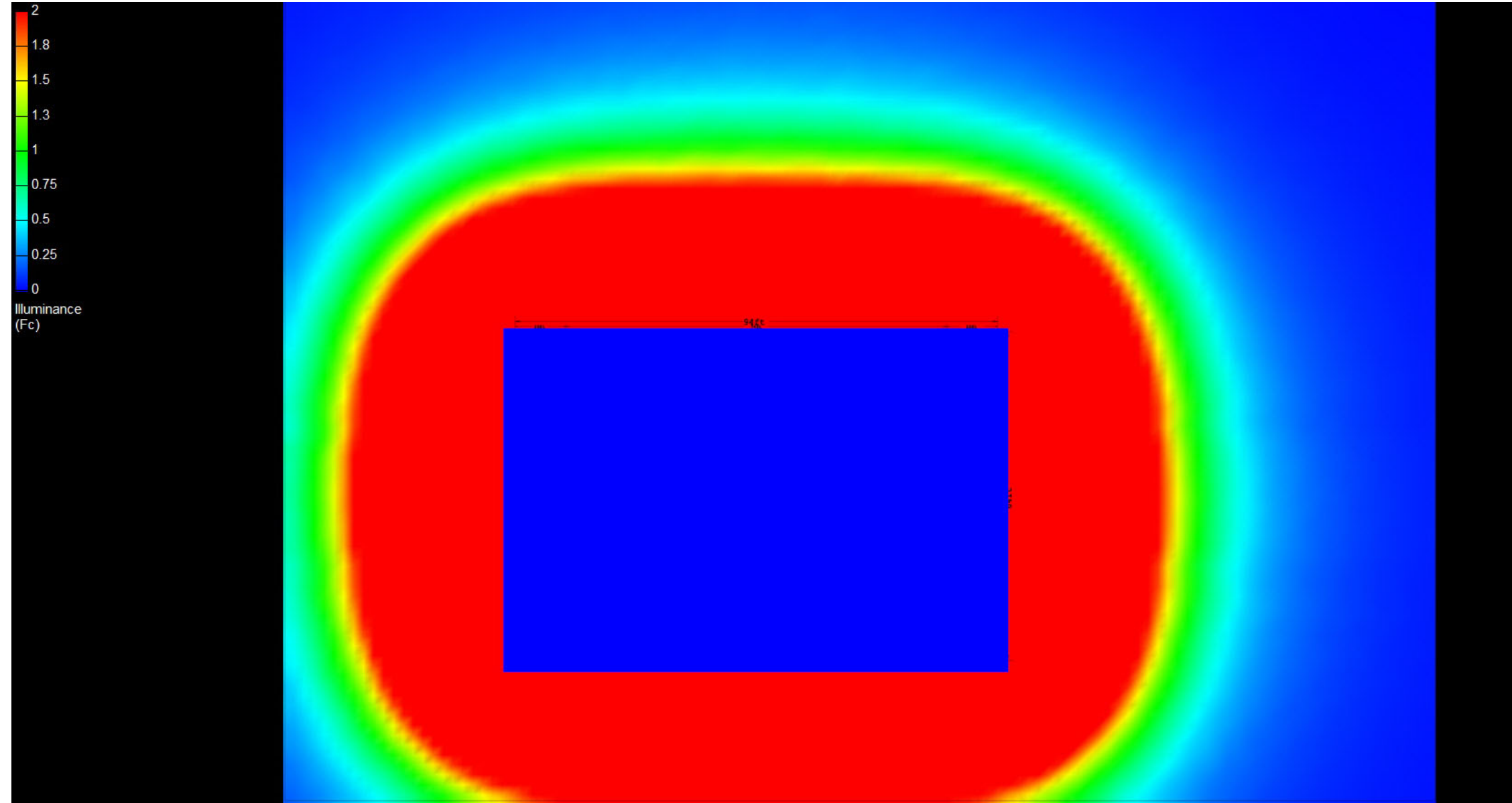
Pump Average Outer: 19.73

Transition Average: N/A

Total Watts: 2619

Watts/sq.ft.: 0.44

Lumens/sq.ft. : 59.8



Canopy Style: 3 + 3 w/ Kiosk

Canopy Size: 64' x 94'

Initial Levels at grade and vertically on pumps.

(18) SCM-LED-20L-SC-50

Fixture Lumens: 19,989

Fixture Watts: 145.5

Lumens/Watt: 137

Mounting Height: 15'

Calculation Summary

Canopy Average: 39.49

Pump Average Inner: 20.11

Pump Average Outer: 19.73

Transition Average: N/A

Total Watts: 2619

Watts/sq.ft.: 0.44

Lumens/sq.ft. : 59.8

