

# Canopy Style: 3 + 3 w/ Kiosk

Canopy Size: 64' x 94'

Initial Levels at grade and vertically on pumps.

## (24) SCM-LED-20L-SC-50

Fixture Lumens: 19,989

Fixture Watts: 145.5

Lumens/Watt: 137

Mounting Height: 15'

## Calculation Summary

Canopy Average: 55.33

Pump Average Inner: 34.46

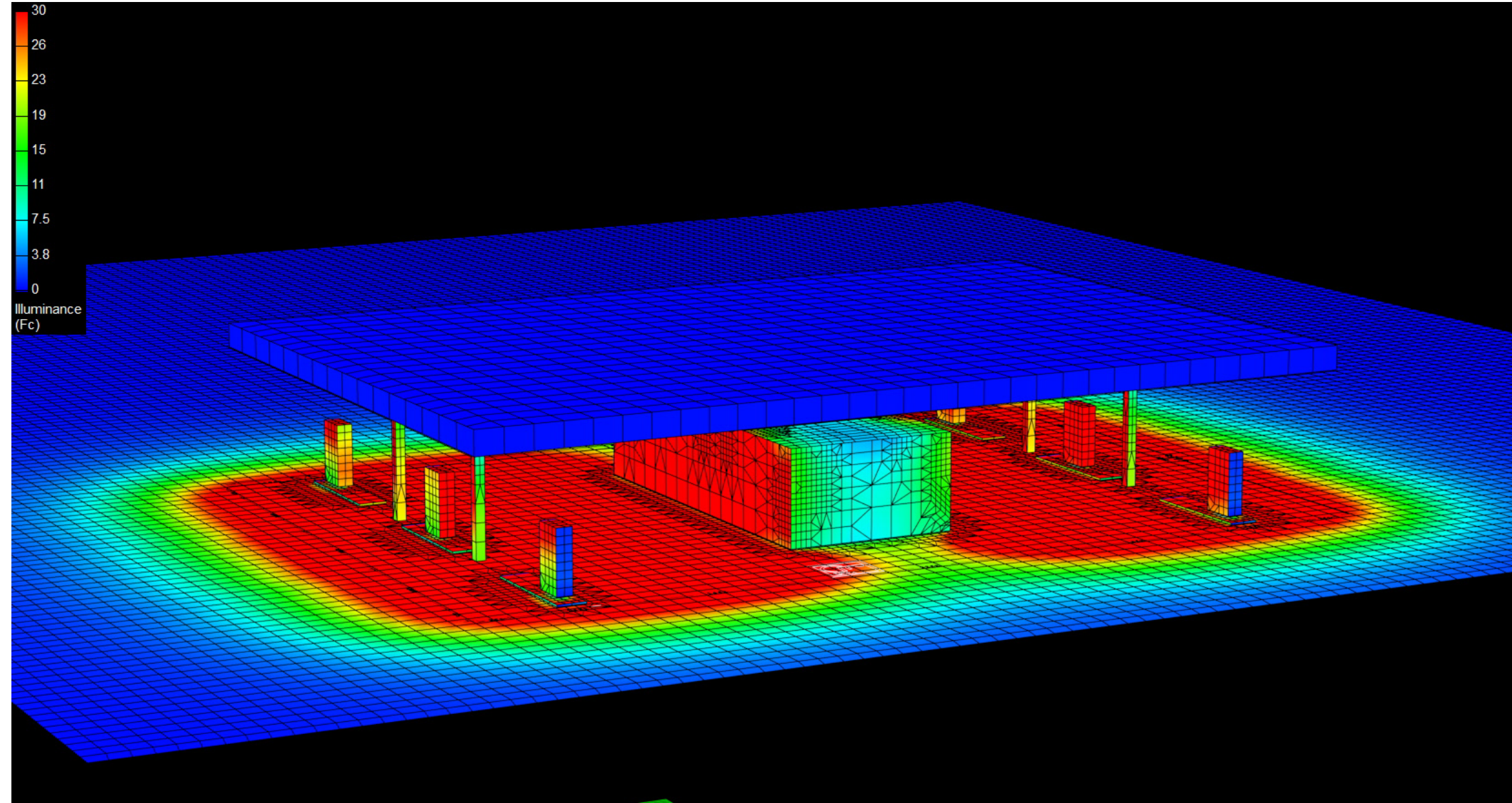
Pump Average Outer: 21.23

Transition Average: N/A

Total Watts: 3492

Watts/sq.ft.: 0.58

Lumens/sq.ft. : 79.7



# Canopy Style: 3 + 3 w/ Kiosk

Canopy Size: 64' x 94'

Initial Levels at grade and vertically on pumps.

## (24) SCM-LED-20L-SC-50

Fixture Lumens: 19,989

Fixture Watts: 145.5

Lumens/Watt: 137

Mounting Height: 15'

## Calculation Summary

Canopy Average: 55.33

Pump Average Inner: 34.46

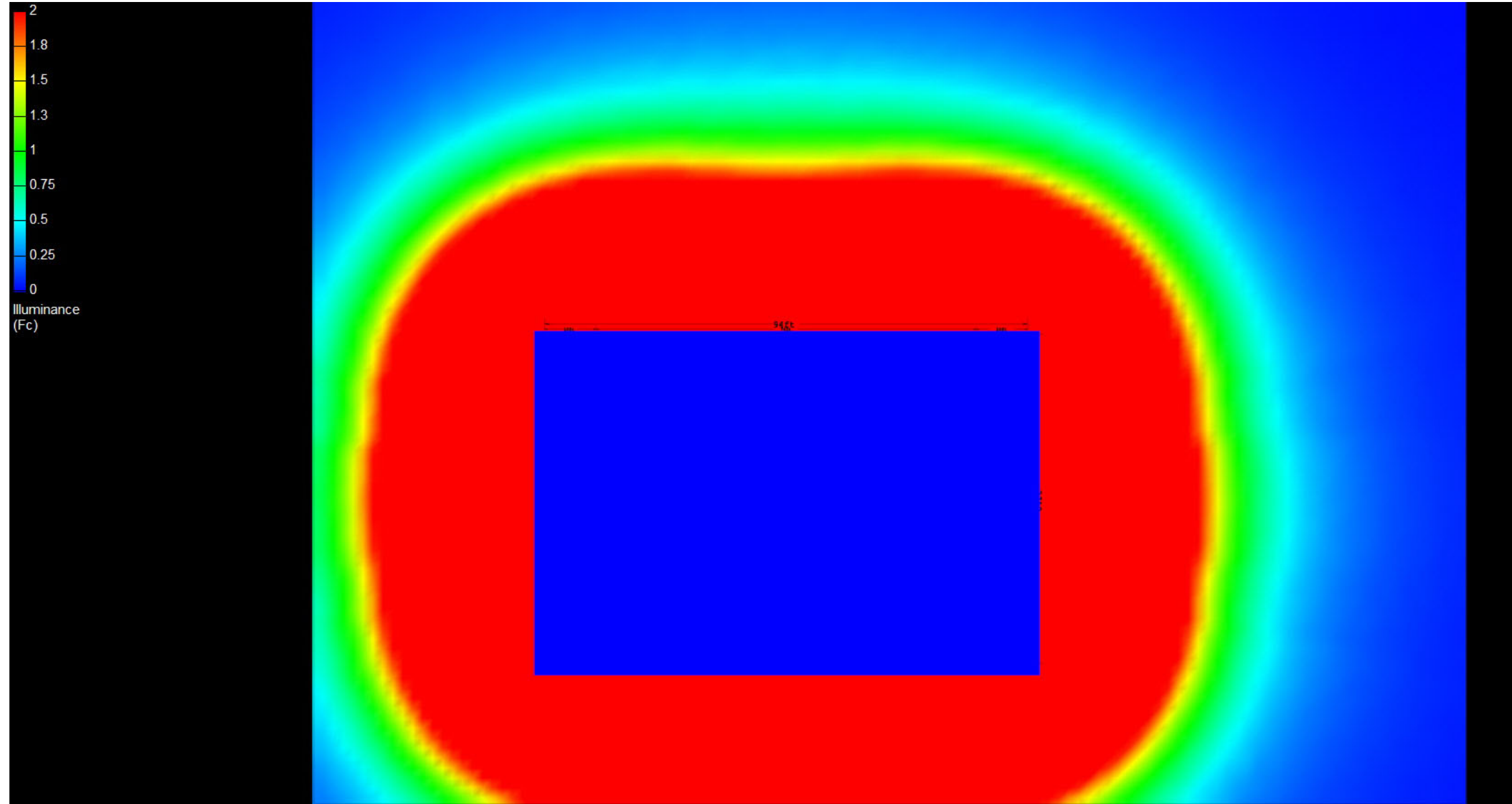
Pump Average Outer: 21.23

Transition Average: N/A

Total Watts: 3492

Watts/sq.ft.: 0.58

Lumens/sq.ft. : 79.7



# Canopy Style: 3 + 3 w/ Kiosk

Canopy Size: 64' x 94'

Initial Levels at grade and vertically on pumps.

## (24) SCM-LED-20L-SC-50

Fixture Lumens: 19,989

Fixture Watts: 145.5

Lumens/Watt: 137

Mounting Height: 15'

## Calculation Summary

Canopy Average: 55.33

Pump Average Inner: 34.46

Pump Average Outer: 21.23

Transition Average: N/A

Total Watts: 3492

Watts/sq.ft.: 0.58

Lumens/sq.ft. : 79.7

