

Canopy Style: 3 + 3 w/ Kiosk

Canopy Size: 64' x 94'

Initial Levels at grade and vertically on pumps.

(18) SCM-LED-13L-SC-50

Fixture Lumens: 13,039

Fixture Watts: 84.7

Lumens/Watt: 154

Mounting Height: 15'

Calculation Summary

Canopy Average: 25.89

Pump Average Inner: 13.09

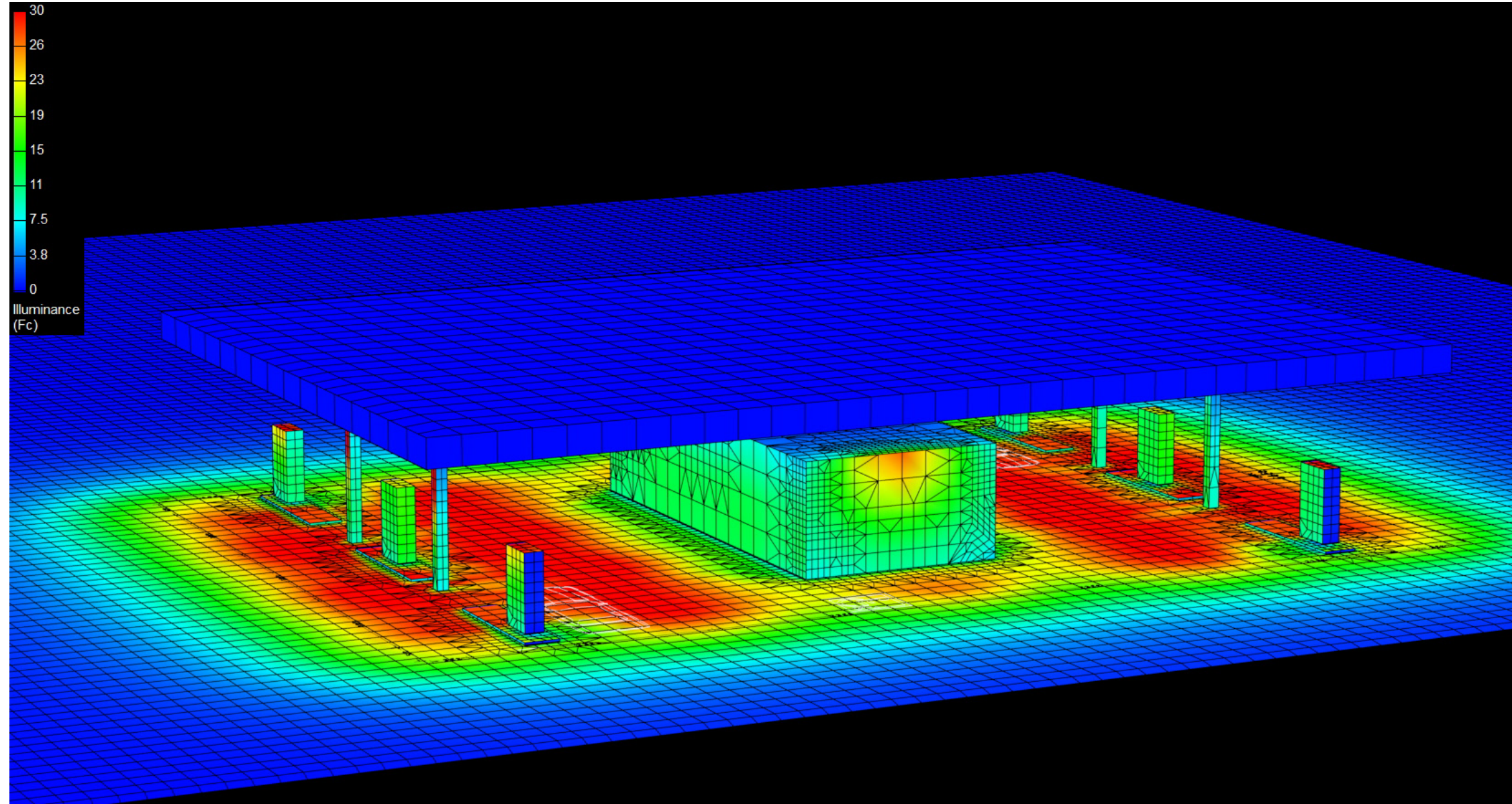
Pump Average Outer: 12.93

Transition Average: N/A

Total Watts: 1524.6

Watts/sq.ft.: 0.25

Lumens/sq.ft. : 39



Canopy Style: 3 + 3 w/ Kiosk

Canopy Size: 64' x 94'

Initial Levels at grade and vertically on pumps.

(18) SCM-LED-13L-SC-50

Fixture Lumens: 13,039

Fixture Watts: 84.7

Lumens/Watt: 154

Mounting Height: 15'

Calculation Summary

Canopy Average: 25.89

Pump Average Inner: 13.09

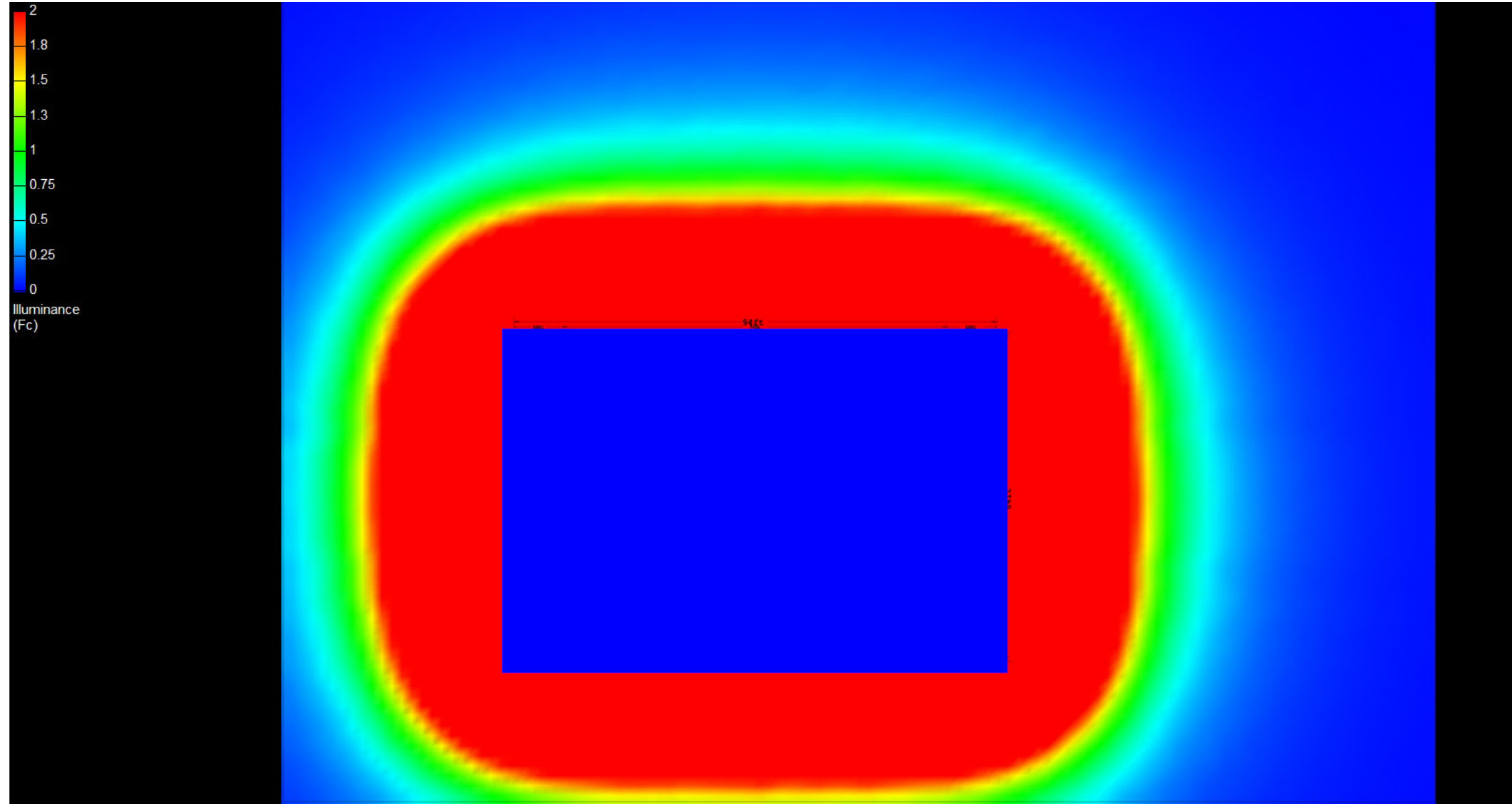
Pump Average Outer: 12.93

Transition Average: N/A

Total Watts: 1524.6

Watts/sq.ft.: 0.25

Lumens/sq.ft. : 39



Canopy Style: 3 + 3 w/ Kiosk

Canopy Size: 64' x 94'

Initial Levels at grade and vertically on pumps.

(18) SCM-LED-13L-SC-50

Fixture Lumens: 13,039

Fixture Watts: 84.7

Lumens/Watt: 154

Mounting Height: 15'

Calculation Summary

Canopy Average: 25.89

Pump Average Inner: 13.09

Pump Average Outer: 12.93

Transition Average: N/A

Total Watts: 1524.6

Watts/sq.ft.: 0.25

Lumens/sq.ft. : 39

