

Canopy Style: 3 x 3 Stacked

Canopy Size: 40' x 92'

Initial Levels at grade and vertically on pumps.

(18) CRUS-SC-VLW-50

Fixture Lumens: 9,364

Fixture Watts: 60

Lumens/Watt: 156

Mounting Height: 15'

Calculation Summary

Canopy Average: 26.26

Pump Average Inner: 17.12

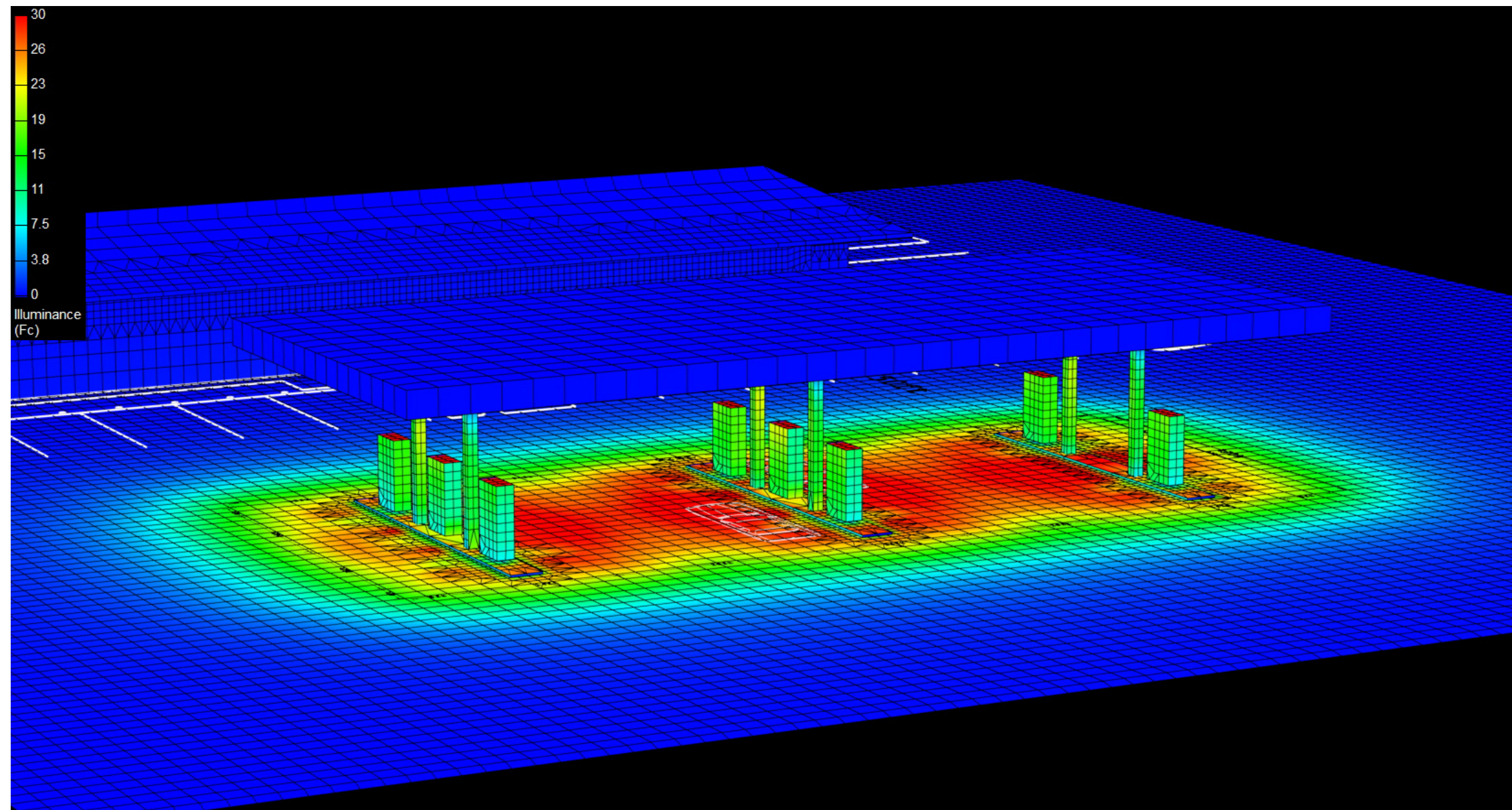
Pump Average Outer: 11.06

Transition Average: 2.68

Total Watts: 1080

Watts/sq.ft.: 0.29

Lumens/sq.ft. : 45.8



Canopy Style: 3 x 3 Stacked

Canopy Size: 40' x 92'

Initial Levels at grade and vertically on pumps.

(18) CRUS-SC-VLW-50

Fixture Lumens: 9,364

Fixture Watts: 60

Lumens/Watt: 156

Mounting Height: 15'

Calculation Summary

Canopy Average: 26.26

Pump Average Inner: 17.12

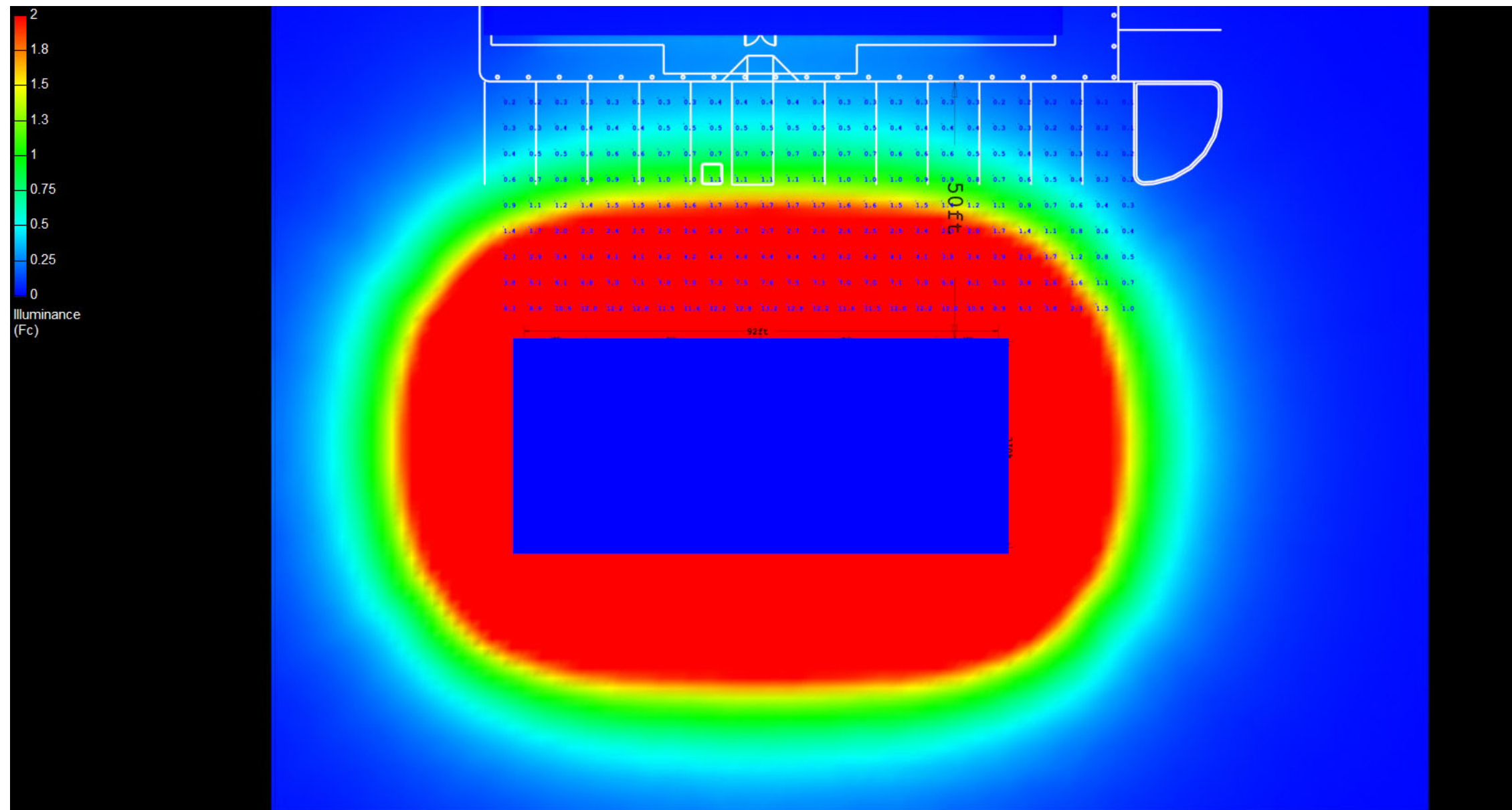
Pump Average Outer: 11.06

Transition Average: 2.68

Total Watts: 1080

Watts/sq.ft.: 0.29

Lumens/sq.ft. : 45.8



Canopy Style: 3 x 3 Stacked

Canopy Size: 40' x 92'

Initial Levels at grade and vertically on pumps.

(18) CRUS-SC-VLW-50

Fixture Lumens: 9,364

Fixture Watts: 60

Lumens/Watt: 156

Mounting Height: 15'

Calculation Summary

Canopy Average: 26.26

Pump Average Inner: 17.12

Pump Average Outer: 11.06

Transition Average: 2.68

Total Watts: 1080

Watts/sq.ft.: 0.29

Lumens/sq.ft. : 45.8

