

# Canopy Style: 3 x 2 Stacked

Canopy Size: 45' x 86'

Initial Levels at grade and vertically on pumps.

## (12) CRUS-SC-SS-50

Fixture Lumens: 13,980

Fixture Watts: 93

Lumens/Watt: 150

Mounting Height: 15'

## Calculation Summary

Canopy Average: 24.32

Pump Average Inner: 10.67

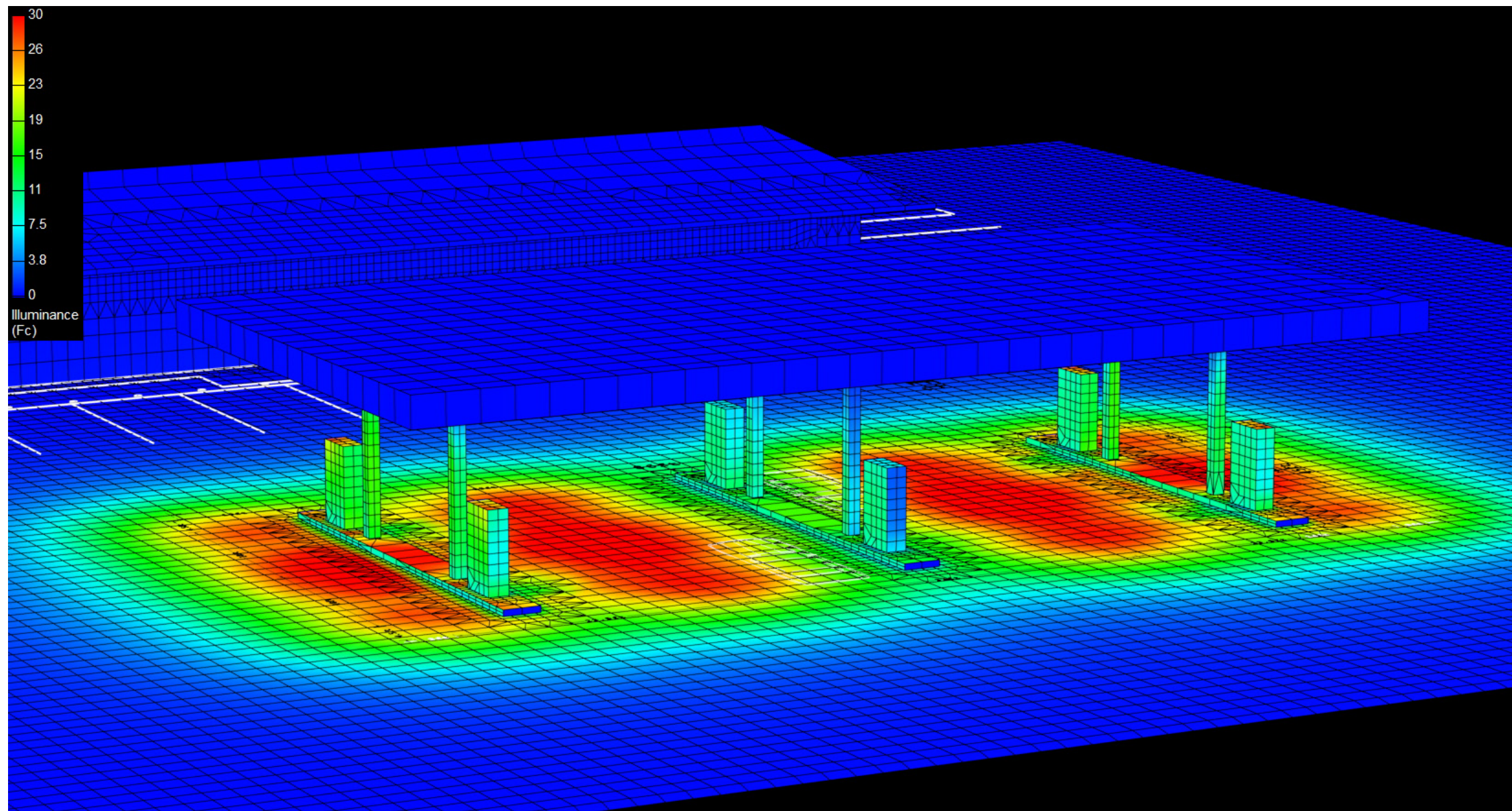
Pump Average Outer: 15.33

Transition Average: 2.45

Total Watts: 1116

Watts/sq.ft.: 0.29

Lumens/sq.ft. : 34.6



# Canopy Style: 3 x 2 Stacked

Canopy Size: 45' x 86'

Initial Levels at grade and vertically on pumps.

## (12) CRUS-SC-SS-50

Fixture Lumens: 13,980

Fixture Watts: 93

Lumens/Watt: 150

Mounting Height: 15'

## Calculation Summary

Canopy Average: 24.32

Pump Average Inner: 10.67

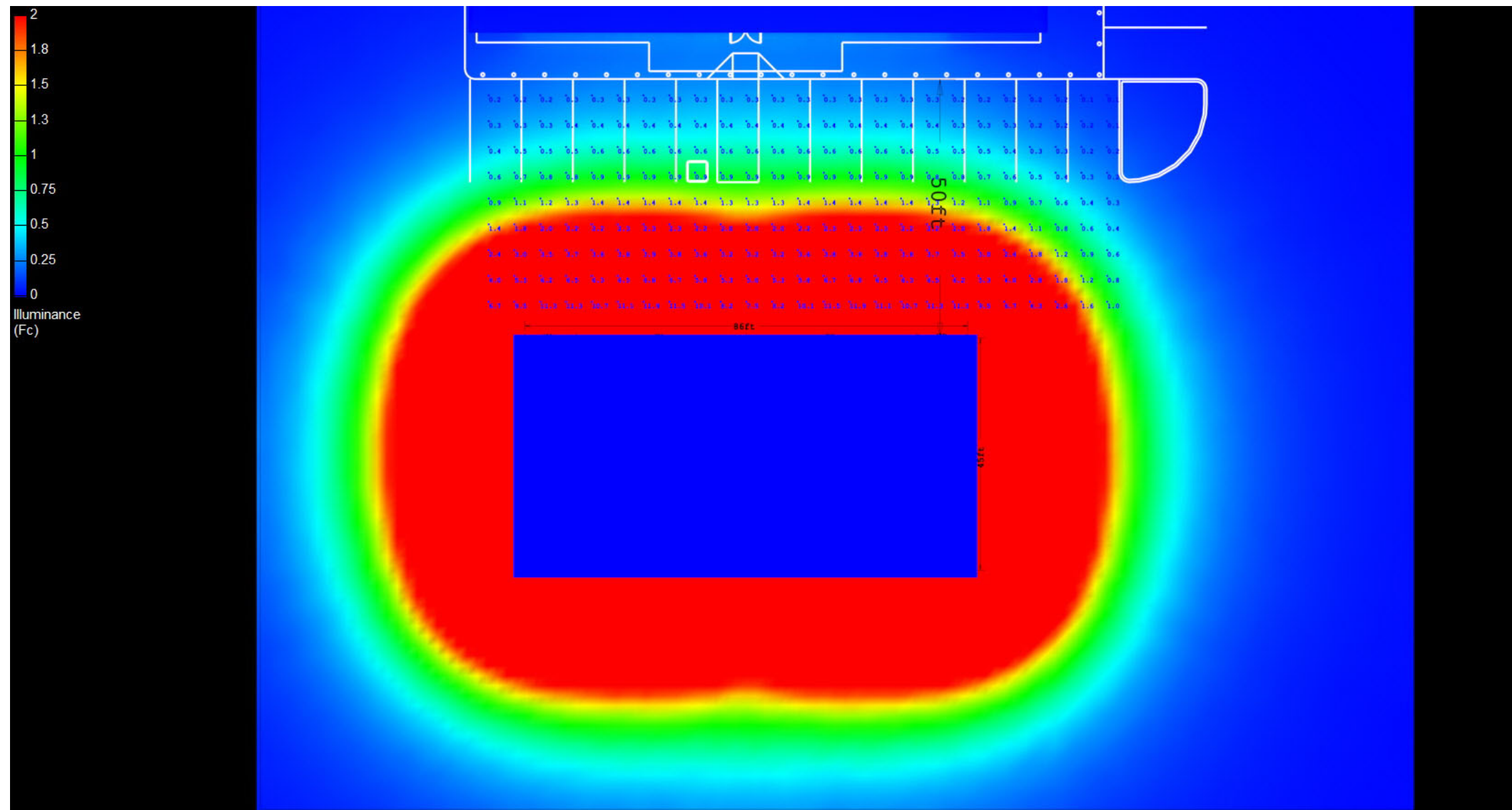
Pump Average Outer: 15.33

Transition Average: 2.45

Total Watts: 1116

Watts/sq.ft.: 0.29

Lumens/sq.ft. : 34.6



# Canopy Style: 3 x 2 Stacked

Canopy Size: 45' x 86'

Initial Levels at grade and vertically on pumps.

## (12) CRUS-SC-SS-50

Fixture Lumens: 13,980

Fixture Watts: 93

Lumens/Watt: 150

Mounting Height: 15'

## Calculation Summary

Canopy Average: 24.32

Pump Average Inner: 10.67

Pump Average Outer: 15.33

Transition Average: 2.45

Total Watts: 1116

Watts/sq.ft.: 0.29

Lumens/sq.ft. : 34.6

