

# Canopy Style: 3 x 1 Inline w/ Kiosk

Canopy Size: 24' x 95'

Initial Levels at grade and vertically on pumps.

## (13) CRUS-SC-VLW-50

Fixture Lumens: 9,364

Fixture Watts: 60

Lumens/Watt: 156

Mounting Height: 15'

## Calculation Summary

Canopy Average: 26.65

Pump Average Inner: 18.86

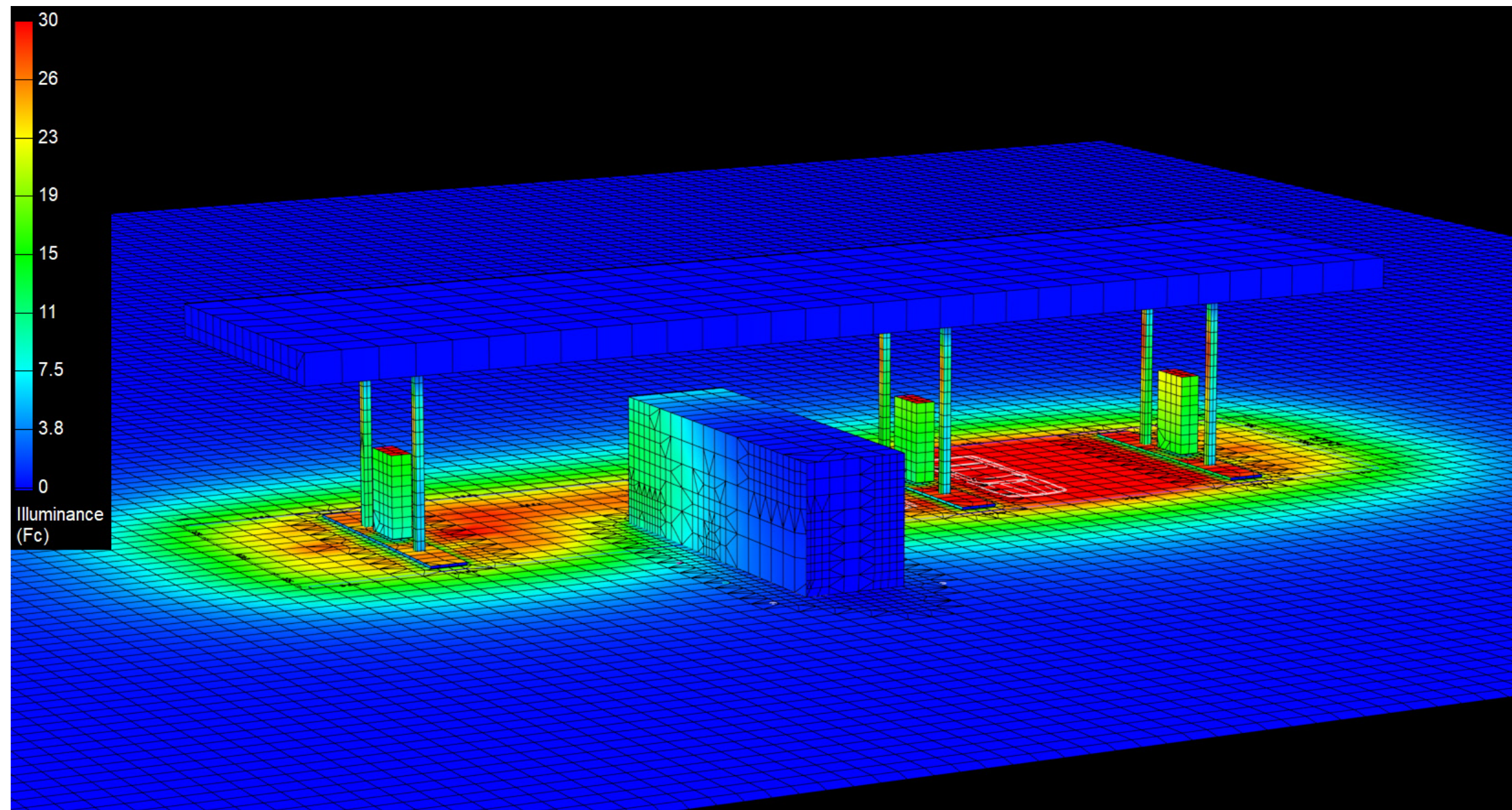
Pump Average Outer: 11.95

Transition Average: N/A

Total Watts: 780

Watts/sq.ft.: 0.34

Lumens/sq.ft. : 53.4



# Canopy Style: 3 x 1 Inline w/ Kiosk

Canopy Size: 24' x 95'

Initial Levels at grade and vertically on pumps.

## (13) CRUS-SC-VLW-50

Fixture Lumens: 9,364

Fixture Watts: 60

Lumens/Watt: 156

Mounting Height: 15'

## Calculation Summary

Canopy Average: 26.65

Pump Average Inner: 18.85

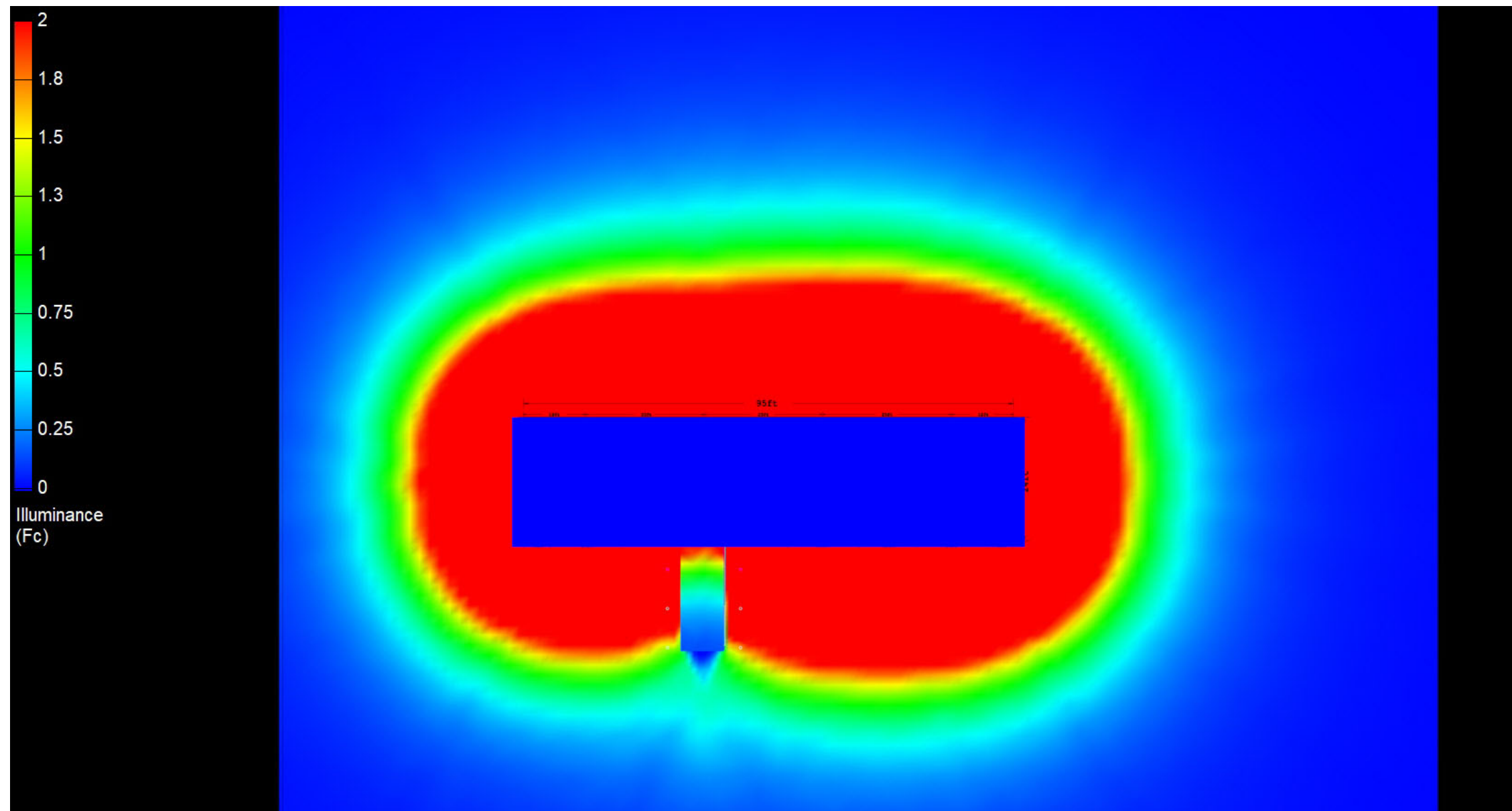
Pump Average Outer: 11.95

Transition Average: N/A

Total Watts: 780

Watts/sq.ft.: 0.34

Lumens/sq.ft. : 53.4



# Canopy Style: 3 x 1 Inline w/ Kiosk

Canopy Size: 24' x 95'

Initial Levels at grade and vertically on pumps.

## (13) CRUS-SC-VLW-50

Fixture Lumens: 9,364

Fixture Watts: 60

Lumens/Watt: 156

Mounting Height: 15'

## Calculation Summary

Canopy Average: 26.65

Pump Average Inner: 18.85

Pump Average Outer: 11.95

Transition Average: N/A

Total Watts: 780

Watts/sq.ft.: 0.34

Lumens/sq.ft. : 53.4

