

# Canopy Style: 3+3 w/ Kiosk

Canopy Size: 64' x 94'

Initial Levels at grade and vertically on pumps.

## (24) CRUS-SC-VLW-50

Fixture Lumens: 9,364

Fixture Watts: 60

Lumens/Watt: 156

Mounting Height: 15'

## Calculation Summary

Canopy Average: 25.77

Pump Average Inner: 16.15

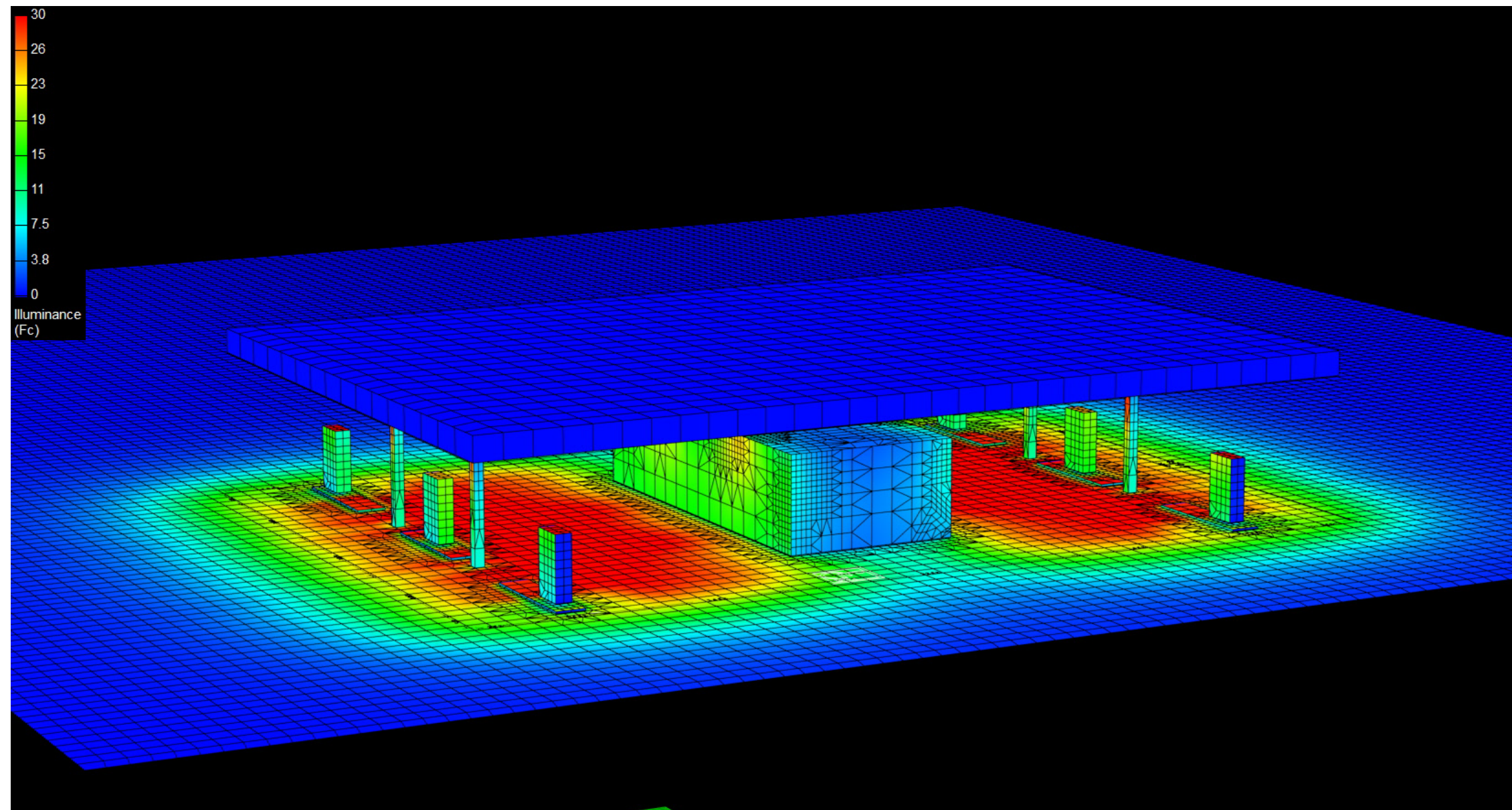
Pump Average Outer: 9.93

Transition Average: N/A

Total Watts: 1440

Watts/sq.ft.: 0.24

Lumens/sq.ft. 37.4



# Canopy Style: 3+3 w/ Kiosk

Canopy Size: 64' x 94'

Initial Levels at grade and vertically on pumps.

## (24) CRUS-SC-VLW-50

Fixture Lumens: 9,364

Fixture Watts: 60

Lumens/Watt: 156

Mounting Height: 15'

## Calculation Summary

Canopy Average: 25.77

Pump Average Inner: 16.15

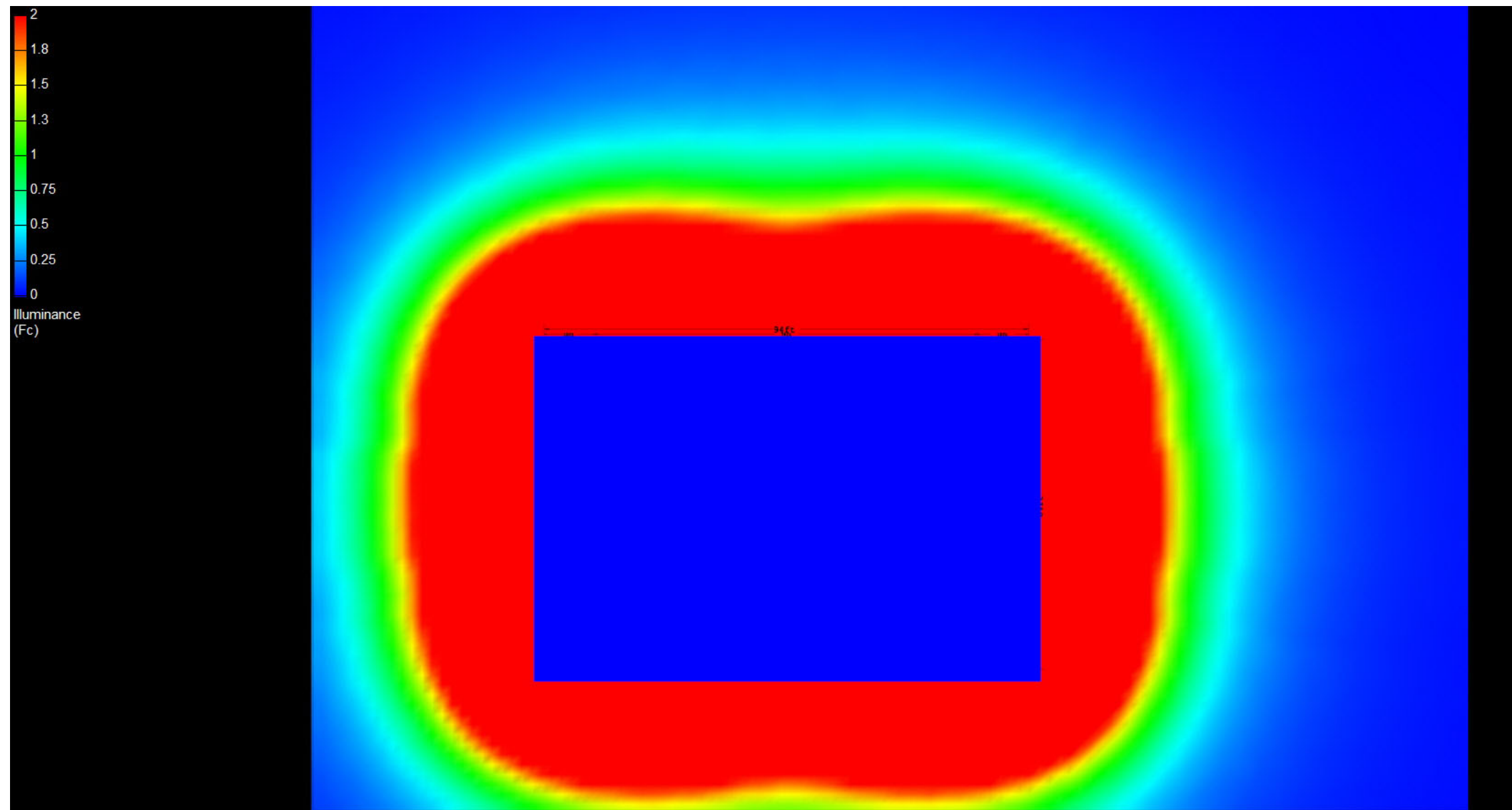
Pump Average Outer: 9.93

Transition Average: N/A

Total Watts: 1440

Watts/sq.ft.: 0.24

Lumens/sq.ft. 37.4



# Canopy Style: 3+3 w/ Kiosk

Canopy Size: 64' x 94'

Initial Levels at grade and vertically on pumps.

## (24) CRUS-SC-VLW-50

Fixture Lumens: 9,364

Fixture Watts: 60

Lumens/Watt: 156

Mounting Height: 15'

## Calculation Summary

Canopy Average: 25.77

Pump Average Inner: 16.15

Pump Average Outer: 9.93

Transition Average: N/A

Total Watts: 1440

Watts/sq.ft.: 0.24

Lumens/sq.ft. 37.4

