

# Canopy Style: 3+3 w/ Kiosk

Canopy Size: 64' x 94'

Initial Levels at grade and vertically on pumps.

## (24) CRUS-SC-VHO-50

Fixture Lumens: 22,696

Fixture Watts: 152

Lumens/Watt: 149

Mounting Height: 15'

## Calculation Summary

Canopy Average: 62.58

Pump Average Inner: 39.08

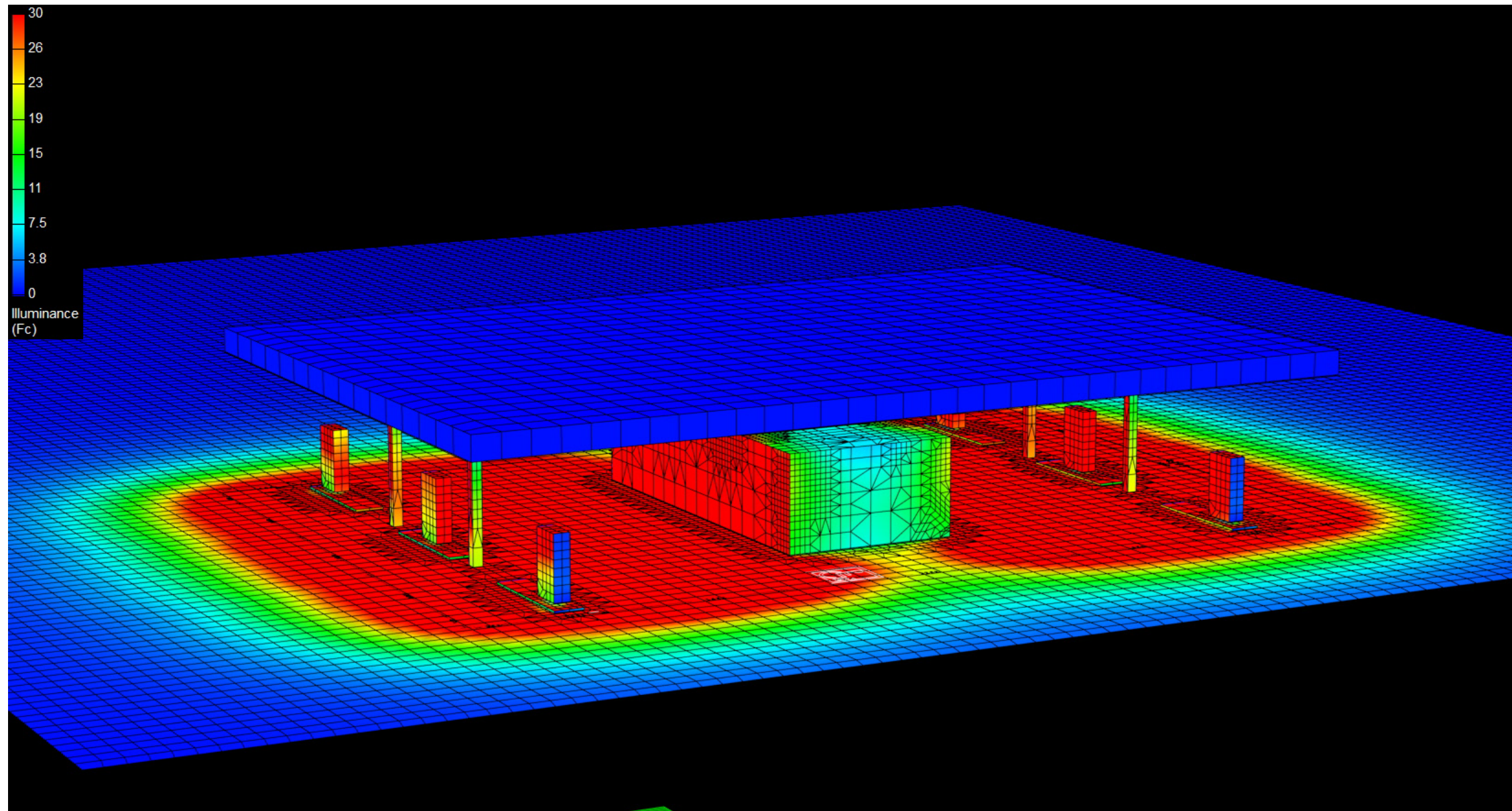
Pump Average Outer: 24.16

Transition Average: N/A

Total Watts: 3648

Watts/sq.ft.: 0.61

Lumens/sq.ft. 90.5



# Canopy Style: 3+3 w/ Kiosk

Canopy Size: 64' x 94'

Initial Levels at grade and vertically on pumps.

## (24) CRUS-SC-VHO-50

Fixture Lumens: 22,696

Fixture Watts: 152

Lumens/Watt: 149

Mounting Height: 15'

## Calculation Summary

Canopy Average: 62.58

Pump Average Inner: 39.08

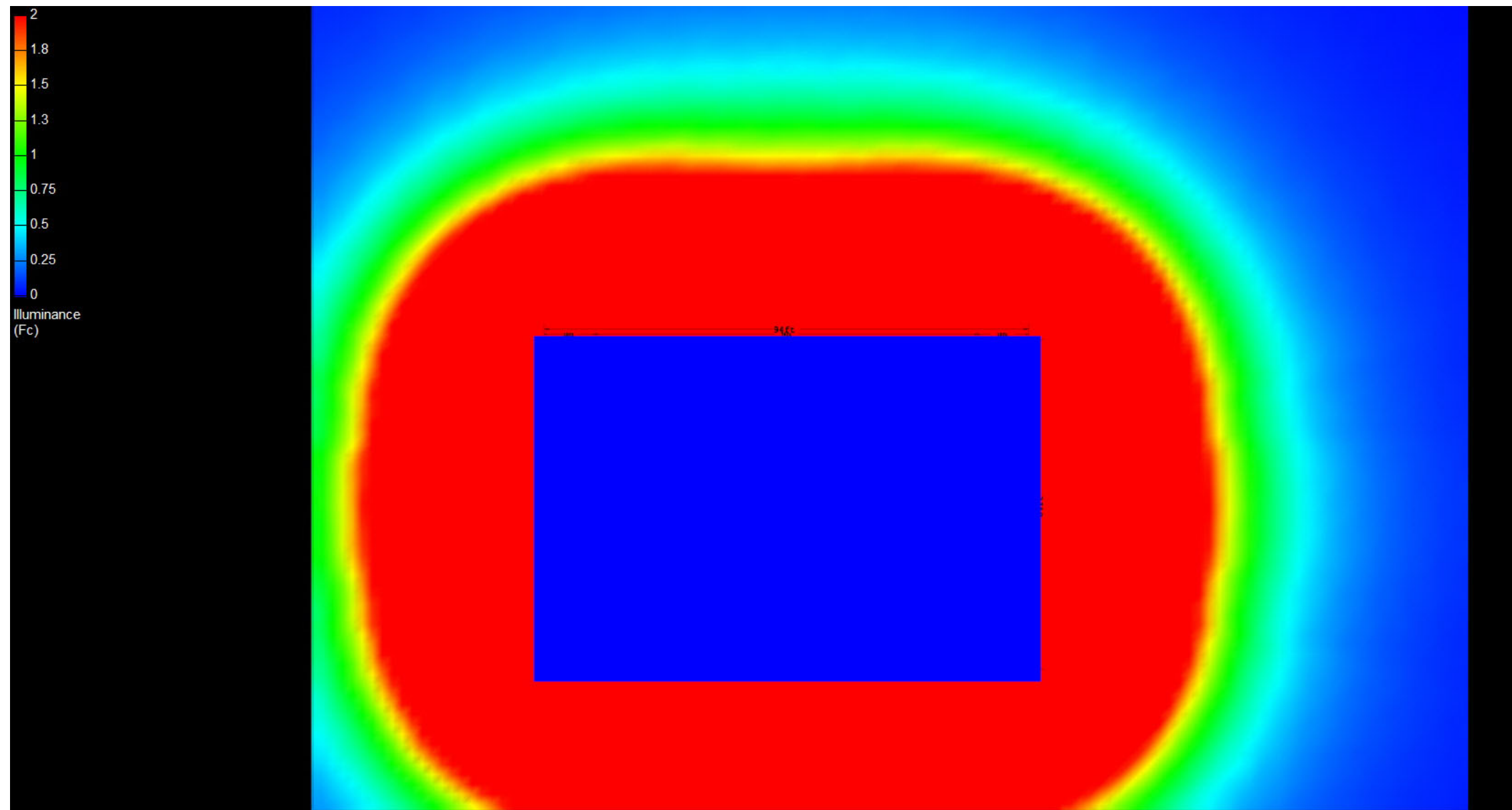
Pump Average Outer: 24.16

Transition Average: N/A

Total Watts: 3648

Watts/sq.ft.: 0.61

Lumens/sq.ft. 90.5



# Canopy Style: 3+3 w/ Kiosk

Canopy Size: 64' x 94'

Initial Levels at grade and vertically on pumps.

## (24) CRUS-SC-VHO-50

Fixture Lumens: 22,696

Fixture Watts: 152

Lumens/Watt: 149

Mounting Height: 15'

## Calculation Summary

Canopy Average: 62.58

Pump Average Inner: 39.08

Pump Average Outer: 24.16

Transition Average: N/A

Total Watts: 3648

Watts/sq.ft.: 0.61

Lumens/sq.ft. 90.5

