

Canopy Style: 3+3 w/ Kiosk

Canopy Size: 64' x 94'

Initial Levels at grade and vertically on pumps.

(18) CRUS-SC-HO-50

Fixture Lumens: 19,071

Fixture Watts: 125

Lumens/Watt: 153

Mounting Height: 15'

Calculation Summary

Canopy Average: 37.51

Pump Average Inner: 19.24

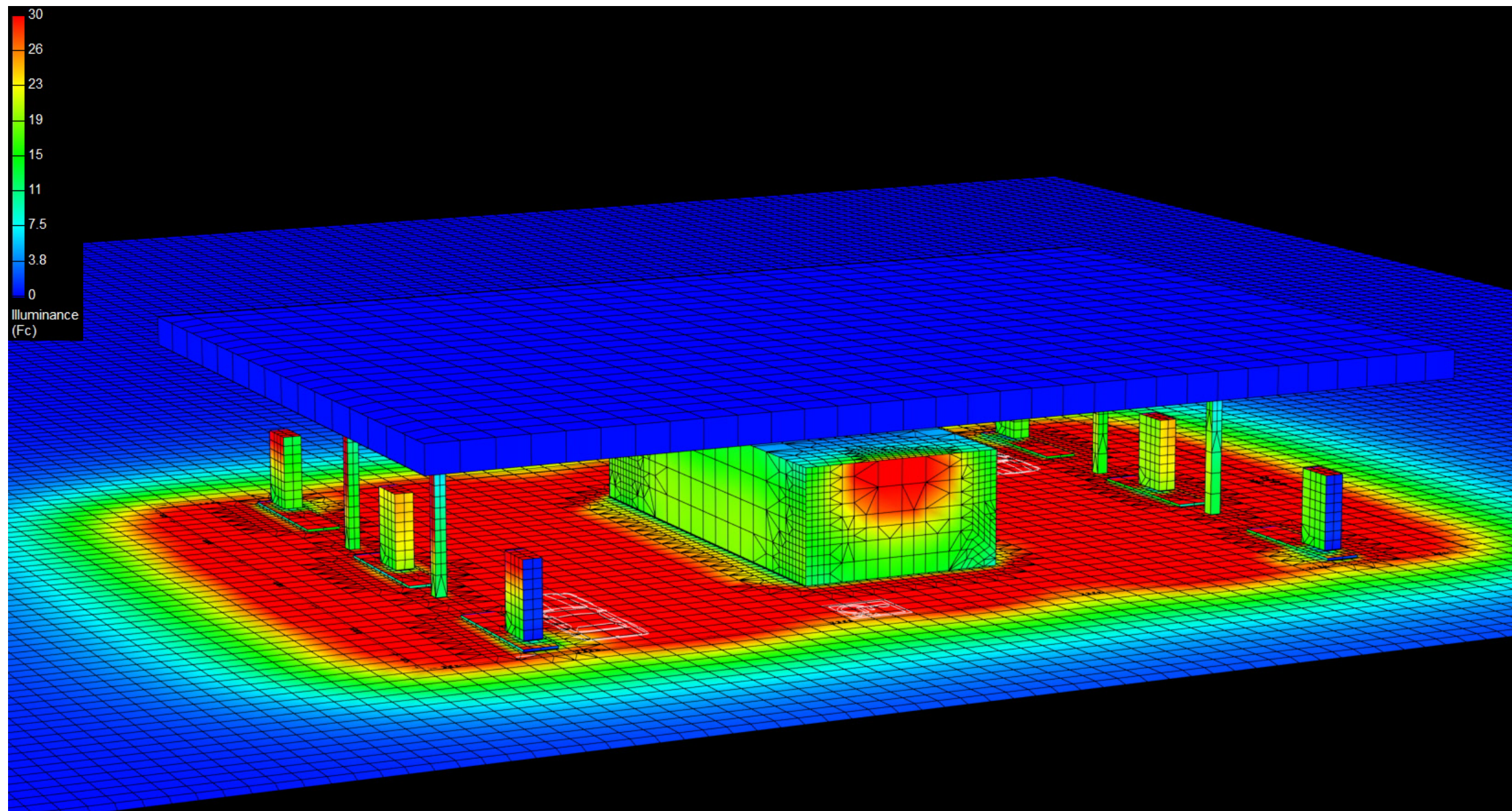
Pump Average Outer: 18.86

Transition Average: N/A

Total Watts: 2250

Watts/sq.ft.: 0.37

Lumens/sq.ft. 57.1



Canopy Style: 3+3 w/ Kiosk

Canopy Size: 64' x 94'

Initial Levels at grade and vertically on pumps.

(18) CRUS-SC-HO-50

Fixture Lumens: 19,071

Fixture Watts: 125

Lumens/Watt: 153

Mounting Height: 15'

Calculation Summary

Canopy Average: 37.51

Pump Average Inner: 19.24

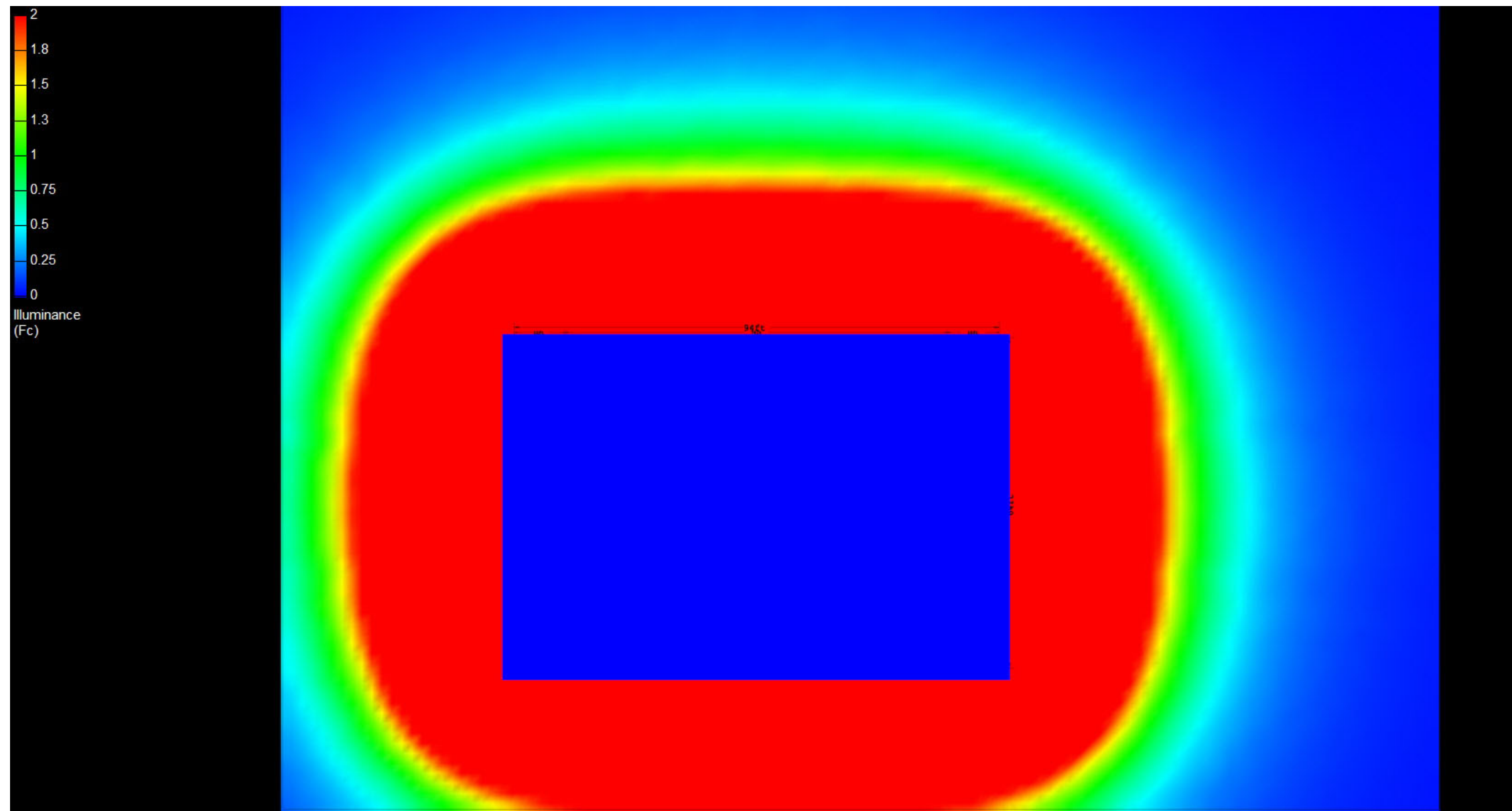
Pump Average Outer: 18.86

Transition Average: N/A

Total Watts: 2250

Watts/sq.ft.: 0.37

Lumens/sq.ft. 57.1



Canopy Style: 3+3 w/ Kiosk

Canopy Size: 64' x 94'

Initial Levels at grade and vertically on pumps.

(18) CRUS-SC-HO-50

Fixture Lumens: 19,071

Fixture Watts: 125

Lumens/Watt: 153

Mounting Height: 15'

Calculation Summary

Canopy Average: 37.51

Pump Average Inner: 19.24

Pump Average Outer: 18.86

Transition Average: N/A

Total Watts: 2250

Watts/sq.ft.: 0.37

Lumens/sq.ft. 57.1

