

# Canopy Style: 3+2+3 w/ Kiosk

Canopy Size: 78' x 92'

Initial Levels at grade and vertically on pumps.

## (30) CRUS-SC-HO-50

Fixture Lumens: 19,071

Fixture Watts: 125

Lumens/Watt: 153

Mounting Height: 15'

## Calculation Summary

Canopy Average: 58.50

Pump Average Inner: 36.69

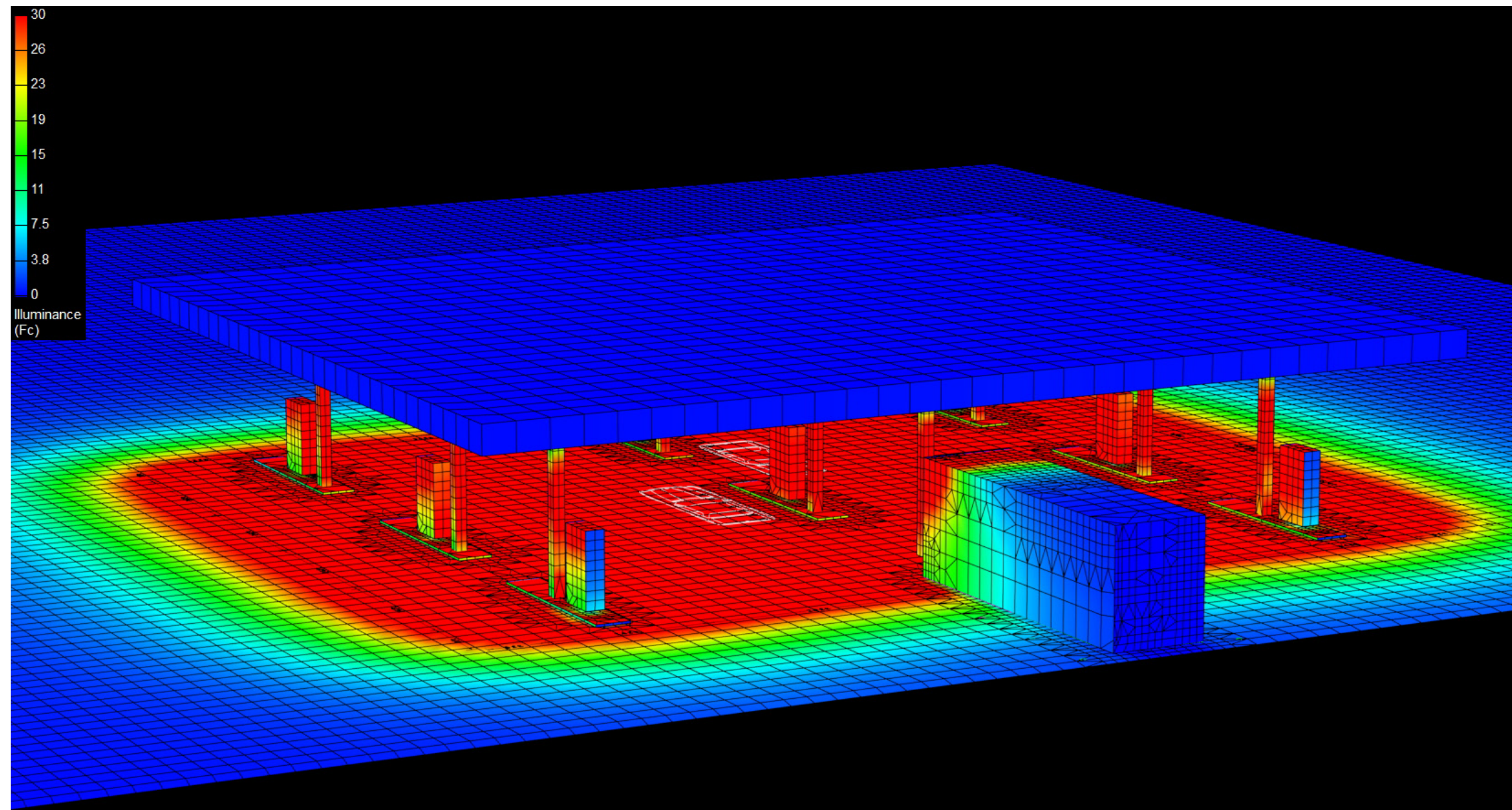
Pump Average Outer: 26.91

Transition Average: N/A

Total Watts: 3750

Watts/sq.ft.: 0.52

Lumens/sq.ft. : 79.6





# Canopy Style: 3+2+3 w/ Kiosk

Canopy Size: 78' x 92'

Initial Levels at grade and vertically on pumps.

## (30) CRUS-SC-HO-50

Fixture Lumens: 19,071

Fixture Watts: 125

Lumens/Watt: 153

Mounting Height: 15'

## Calculation Summary

Canopy Average: 58.50

Pump Average Inner: 36.69

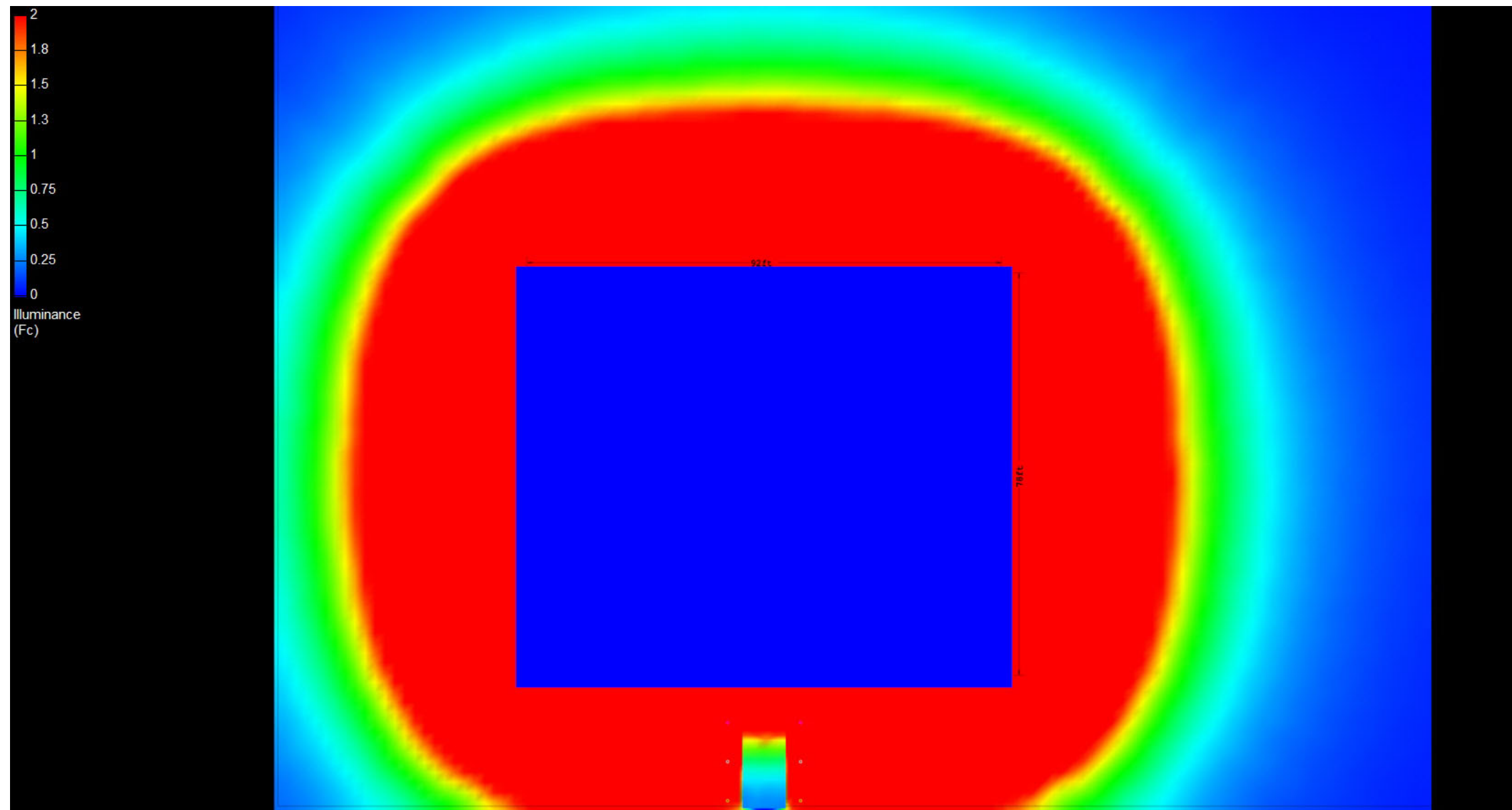
Pump Average Outer: 26.91

Transition Average: N/A

Total Watts: 3750

Watts/sq.ft.: 0.52

Lumens/sq.ft. : 79.6



# Canopy Style: 3+2+3 w/ Kiosk

Canopy Size: 78' x 92'

Initial Levels at grade and vertically on pumps.

**(30) CRUS-SC-HO-50**

Fixture Lumens: 19,071

Fixture Watts: 125

Lumens/Watt: 153

Mounting Height: 15'

## Calculation Summary

Canopy Average: 58.50

Pump Average Inner: 36.69

Pump Average Outer: 26.91

Transition Average: N/A

Total Watts: 3750

Watts/sq.ft.: 0.52

Lumens/sq.ft. : 79.6

