

# Canopy Style: 2+1+2 w/ Kiosk

Canopy Size: 43' x 92'

Initial Levels at grade and vertically on pumps.

## (18) CRUS-SC-VHO-50

Fixture Lumens: 22,696

Fixture Watts: 152

Lumens/Watt: 149

Mounting Height: 15'

## Calculation Summary

Canopy Average: 64.55

Pump Average Inner: 36.52

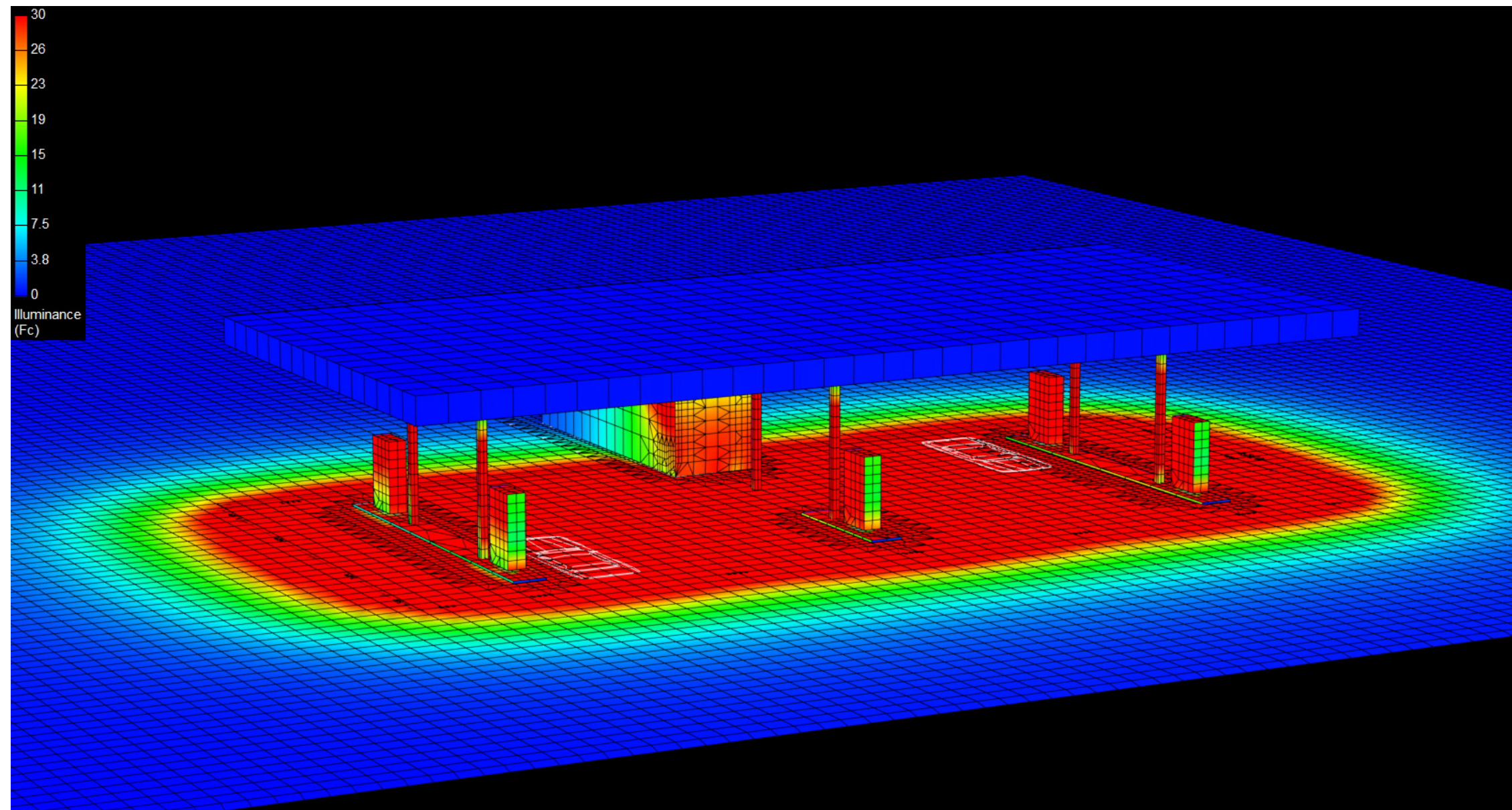
Pump Average Outer: 28.20

Transition Average: N/A

Total Watts: 2736

Watts/sq.ft.: 0.69

Lumens/sq.ft. : 103.3



# Canopy Style: 2+1+2 w/ Kiosk

Canopy Size: 43' x 92'

Initial Levels at grade and vertically on pumps.

## (18) CRUS-SC-VHO-50

Fixture Lumens: 22,696

Fixture Watts: 152

Lumens/Watt: 149

Mounting Height: 15'

## Calculation Summary

Canopy Average: 64.55

Pump Average Inner: 36.52

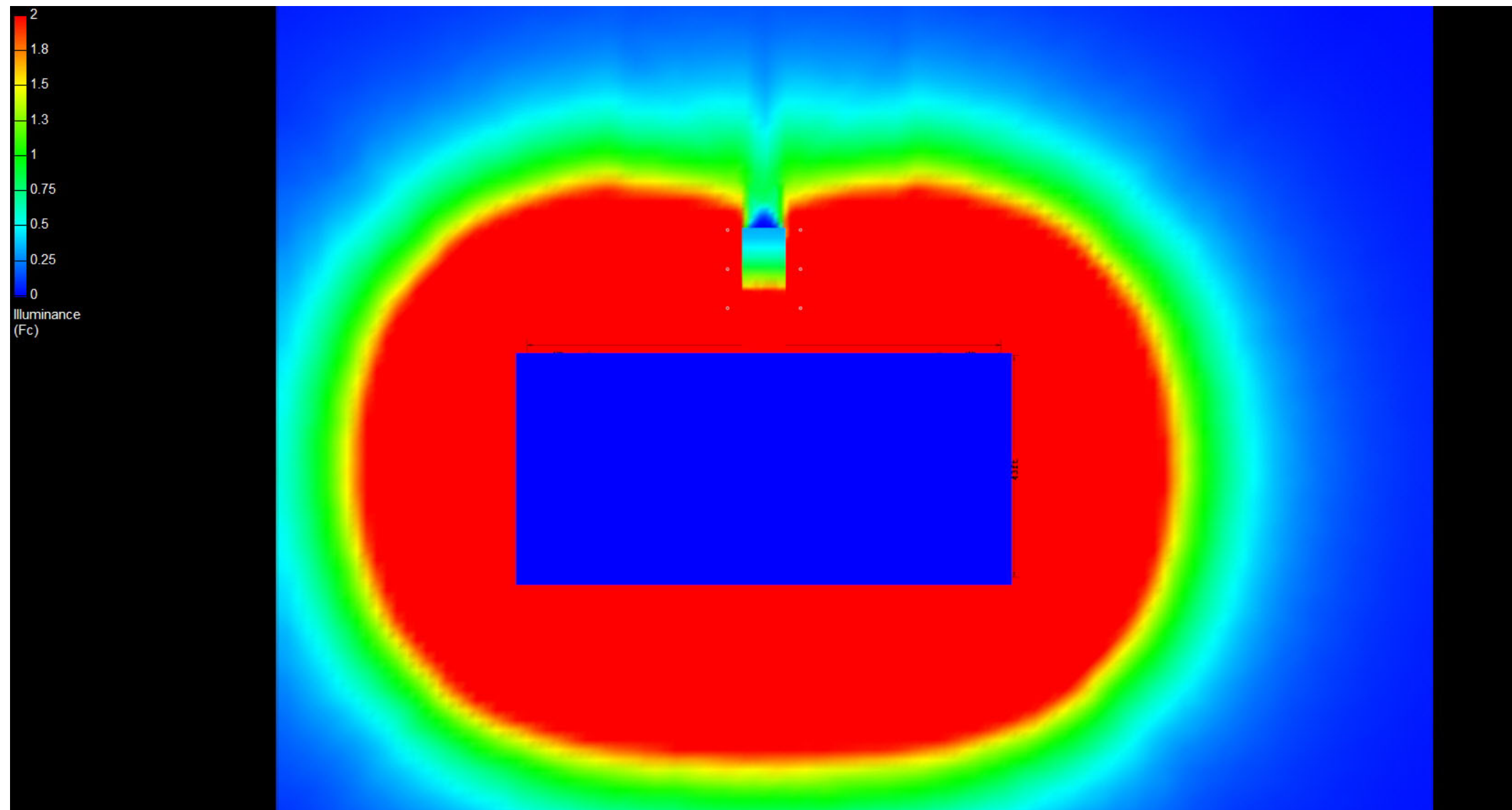
Pump Average Outer: 28.20

Transition Average: N/A

Total Watts: 2736

Watts/sq.ft.: 0.69

Lumens/sq.ft. : 103.3



# Canopy Style: 2+1+2 w/ Kiosk

Canopy Size: 43' x 92'

Initial Levels at grade and vertically on pumps.

## (18) CRUS-SC-VHO-50

Fixture Lumens: 22,696

Fixture Watts: 152

Lumens/Watt: 149

Mounting Height: 15'

## Calculation Summary

Canopy Average: 64.55

Pump Average Inner: 36.52

Pump Average Outer: 28.20

Transition Average: N/A

Total Watts: 2736

Watts/sq.ft.: 0.69

Lumens/sq.ft. : 103.3

