



Typical Parking Garage Section

Fixture Spacing: 30' x 30'

Fixture Height: 8'

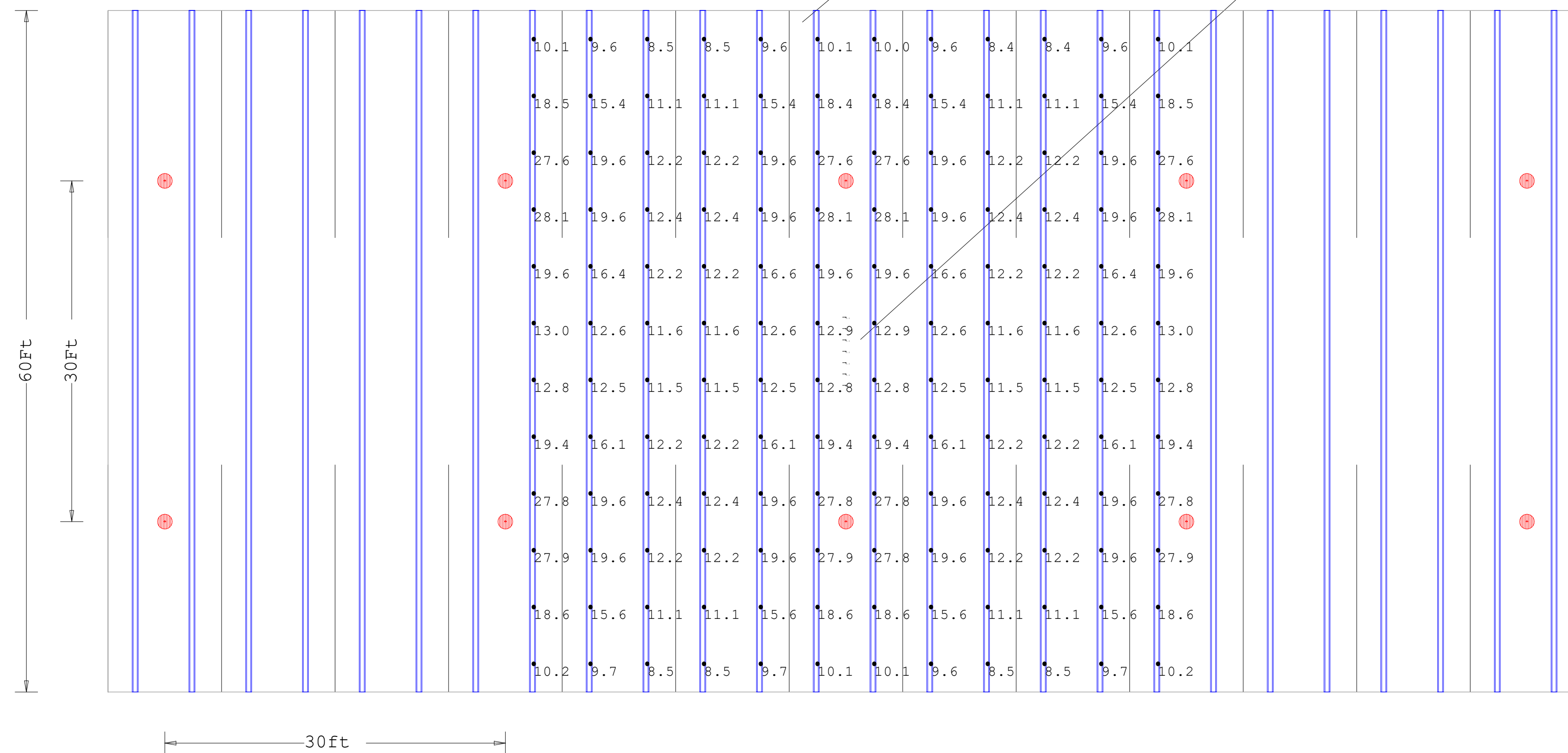
Reflectances: 35% Ceiling 35% Walls 20% Floor



OPS-PD/SD

Floor Horizontal Calculation

Drive Aisle Vertical @5' Calculation



Luminaire Schedule						
Symbol	Description	Lum. Lumens	Lum. Watts	LER	LLD	LLF
⊕	OPS-14L-5Q-40K8	14148	100	141	1.000	1.000

Calculation Summary							
Label	CalcType	Units	Avg	Max	Min	Avg/Min	Max/Min
Horizontal at Grade	Illuminance	Fc	15.43	28.1	8.4	1.84	3.35
Vertical at 5 Feet (Height of Eye)	Illuminance	Fc	2.10	2.1	2.1	1.00	1.00

Luminaire Location Summary						
LumNo	X	Y	Z	Orient	Tilt	
1	35	15	8	90	0	
2	5	15	8	90	0	
3	125	15	8	90	0	
4	65	15	8	90	0	
5	95	15	8	90	0	
6	35	45	8	90	0	
7	5	45	8	90	0	
8	125	45	8	90	0	
9	65	45	8	90	0	
10	95	45	8	90	0	

Fixtures mounted even with bottom of tees.

Based on the information provided, all dimensions and luminaire locations shown represent recommended positions. The engineer and/or architect must determine the applicability of the layout to existing or future field conditions.

This lighting plan represents illumination levels calculated from laboratory data taken under controlled conditions in accordance with The Illuminating Engineering Society (IES) approved methods. Actual performance of any manufacturer's luminaires may vary due to changes in electrical voltage, tolerance in lamps/LED's and other variable field conditions. Calculations do not include obstructions such as buildings, curbs, landscaping, or any other architectural elements unless noted. Fixture nomenclature noted does not include mounting hardware or poles. This drawing is for photometric evaluation purposes only and should not be used as a construction document or as a final document for ordering product.

