



R Series - 3RPM

3" Recessed Perimeter Lighting System



OVERVIEW	
Lumen Package (lm/ft.)	600 - 1,300
CCT	2700K, 3000K, 3500K, 4000K, 5000K
Wattage Range (W/ft.)	5.7 - 12
Efficacy Range (LPW)	95 -118
Weight lbs/ft. (kg/ft.)	3 (1.3)

QUICK LINKS

FEATURES & SPECIFICATIONS

Construction

- Rigid extruded aluminum housing for consistency and strength
- Die Cast Aluminum End Caps
- Available in varying lengths from 2' to 8' for individual or continuous row mounting
- Seamlessly create a variety of shapes with straight and corner units
- Housing is treated with phosphate rust inhibitor and painted with textured powder coat paint.
- Manufactured in the USA

Optical System

- High transmission snap-in impact resistant diffuse acrylic lens
- Minimum CRI of 82

Electrical

- High-performance driver features over-voltage, under-voltage, short-circuit and over temperature protection.
- 0-10V dimming (1% - 100%) standard.
- Standard Universal Voltage (120-277 VAC) Input 50/60 Hz or optional High voltage (347 VAC).
- L70 Calculated Life: >100k Hours
- Total harmonic distortion: <20%

- Operating temperature: -40°C to +40°C (-40°F to +104°F)
- Power factor: >.95
- Input power stays constant over life.
- Factory pre-wired to section ends with quick-wire connectors
- Optional 120-277V 12W integral emergency battery pack is available to meet critical life-safety lighting requirements. The 90-minute batteries provide constant power to the LED system, ensuring code compliance. A test switch/indicator button is installed beneath the snap in lens mounted to the reflector.

Installation

- Mounting options include both Drywall and T-Grid
- Mounting brackets on housing sides support T-Grid installation
- Quick connect harness to attach fixtures in continuous rows
- Joiner tabs to ensure proper alignment from fixture to fixture
- Power access holes on top and end of fixtures
- 1/4" holes on support brackets for hanger wires in Grid installations
- 5/8" mounting holes on drywall fixtures for alternate mounting option

Warranty

- LSI luminaires carry a 5-year limited warranty. Refer to <https://www.lsicorp.com/resources/terms-conditions-warranty/> for more information.
- 1 Year warranty on optional Battery Backup. Test regularly in accordance with local codes.

Listings

- List for UL 1598 and UL 8750
- RoHS Compliant
- Suitable for damp locations
- Meets Buy American Act requirements
- State of California Title 24 compliant

ORDERING GUIDE

TYPICAL ORDER EXAMPLE: 3RPM 4 LED 06L 2.5R FL LF UE 40 WHT EM					
Prefix	Length	Light Source	Lumens (Per Foot)	Regress	Ceiling Wall Type
3RPM - 3" Width	2 - 2' Length ¹ 3 - 3' Length 4 - 4' Length 5 - 5' Length 6 - 6' Length 7 - 7' Length 8 - 8' Length CHO - 2'x2' Horizontal Corner 4T - 4ft. Telescopic Adjustable Length 25" - 48"	LED	06L - 600 Lumens 10L - 1,000 Lumens 13L - 1,300 Lumens	NR - No Regress 1R - 1" Regress 2R - 2 Regress 2.5R - 2.5 Regress 3R - 3 Regress	Individual G - Grid Unit (end plates not included) F - Flanged Unit for Drywall/Sheetrock (end plates not included) FL - Flangeless Unit for Drywall/Sheetrock (end plates not included)

Lens	Voltage	Color Temperature	Finish	Options
LF - Frosted Diffuse	UE - Universal Voltage (120V-277V) HV - High Voltage (347V)	27 - 2700K ² 30 - 3000K 35 - 3500K 40 - 4000K 50 - 5000K ²	WHT - White BLK - Black MSV - Silver RAL - Custom Color (specify i.e. RAL829)	EM - Emergency Battery Pack EC - Emergency Circuit EH - Emergency Through Harness ⁴ F - Fast Blow Fuse GMF - Slow Blow Fuse 90C - 90 CRI min.

ACCESSORY ORDERING INFORMATION (MUST BE ORDERED SEPARATELY)

End Plates	Regress	Finish
3RPM G EP - Grid End Plates 3RPM F EP - Flanged End Plates 3RPM FL EP - Flangeless End Plates	NR - No Regress 1R - 1" Regress 2R - 2 Regress 2.5R - 2.5 Regress 3R - 3 Regress	WHT - White BLK - Black MSV - Silver RAL - Custom Color (specify i.e. RAL829)



Need more information?
Click here for our glossary

Have additional questions?
Call us at (800) 436-7800



1 - Emergency battery options not available for this length.
 2 - Adds 1 week to published lead time.
 3 - Applies to 9/16" and 15/16" tegular and non-tegular grid ceiling.
 4 - EH is required if emergency circuit traverses multiple fixtures.

PERFORMANCE

Delivered Lumens - Per Foot						
Size	Output	3000K	3500K	4000K	5000K	Wattage
3'	06L	604	613	634	653	5.7
	10L	919	934	965	993	8.7
	13L	1,222	1,242	1,283	1,321	12.0

*LED Chips are frequently updated therefore values are nominal.

Electrical Data - Current Draw AMPS*					
Lumen Package	120V	208V	240V	277V	347V
06L	0.048A	0.027A	0.024A	0.021A	0.016A
10L	0.073A	0.042A	0.036A	0.031A	0.025A
13L	0.100A	0.058A	0.050A	0.043A	0.035A

*Electrical data at 25C (77F). Actual wattage may differ by +/-10%.

Recommended Lumen Maintenance					
Ambient	Initial ²	25K hr ²	50K hr ²	75K hr ²	100K hr ²
0 C (32 F)	1.02	0.96	0.94	0.92	0.90
5 C (41 F)	1.02	0.96	0.94	0.91	0.89
10 C (50 F)	1.01	0.95	0.92	0.89	0.86
15 C (59 F)	1.01	0.95	0.91	0.87	0.83
20 C (68 F)	1.00	0.94	0.89	0.84	0.80
25 C (77 F)	1.00	0.92	0.86	0.81	0.75
30 C (86 F)	0.99	0.91	0.83	0.77	0.71
35 C (95 F)	0.98	0.91	0.80	0.70	0.62

1 - Lumen maintenance values at 25C are calculated per TM-21 based on LM-80 data and in-situ testing.

2 - In accordance with IESNA TM-21-11, Projected Values represent interpolated value based on time durations that are within six times the IESNA LM-80-08 total test duration for the device under testing.

3 - In accordance with IESNA TM-21-11, Calculated Values represent time durations that exceed six times the IESNA LM-80-08 total test duration for the device under testing.

PHOTOMETRICS

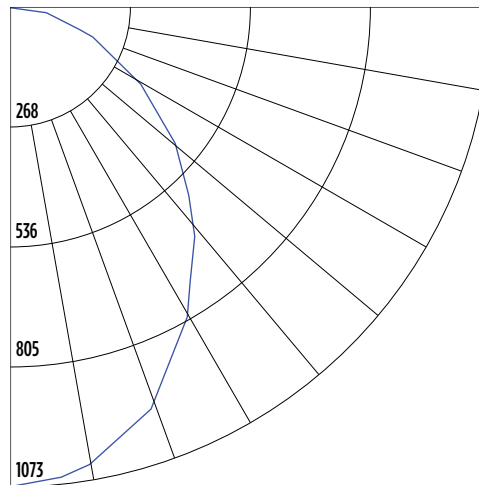
Luminaire photometry has been conducted by a NVLAP accredited testing laboratory in accordance with IESNA LM-79-08. As specified by IESNA LM-79-08 the entire luminaire is tested as the source resulting in a luminaire efficiency of 100%.

See the individual product page on <https://www.lsicorp.com/> for detailed photometric data.

3RPM 4 LED 06L

Zonal Lumen Summary		
Zone	Lumens	% Luminaire
0 - 30	781.0	31%
0-40	1,239.3	49.2%
0-60	2,063.3	81.9%
60-90	455.9	18.1%
70-100	184.1	7.3%
90-120	0	0%
0-90	2,519.3	100%
90-180	0	0%
0-180	2,519.3	100%

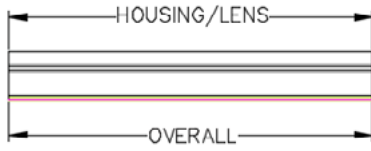
Polar Curve



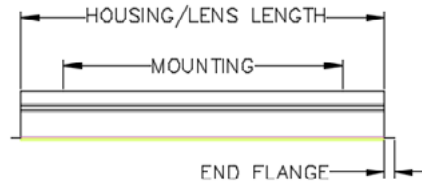
■ Vertical Plane

STRAIGHT DIMENSIONS

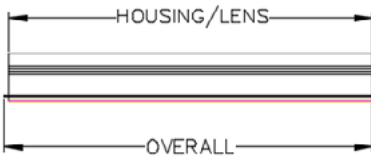
GRID JOINER FIXTURE (GJ)



DRYWALL/SHEETROCK FIXTURE (F,FL)

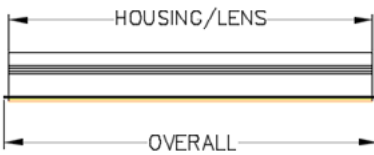


GRID STARTED / ENDER FIXTURE (GS,GE)

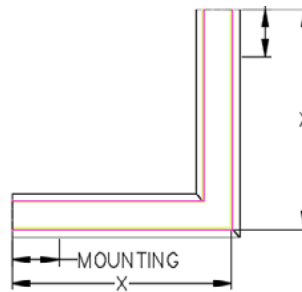


Grid Fixtures	2' Housing	2' Overall	3' Housing	3' Overall	4' Housing	4' Overall	5' Housing	5' Overall	6' Housing	6' Overall	8' Housing	8' Overall
Perimeter Grid Unit	24.00	24.00	36.00	36.00	48.00	48.00	60.00	60.00	72.00	72.00	96.00	96.00

GRID INDIVIDUAL FIXTURE (GI)



CORNER DIMENSIONS



DRYWALL/SHEETROCK HORIZONTAL FIXTURE