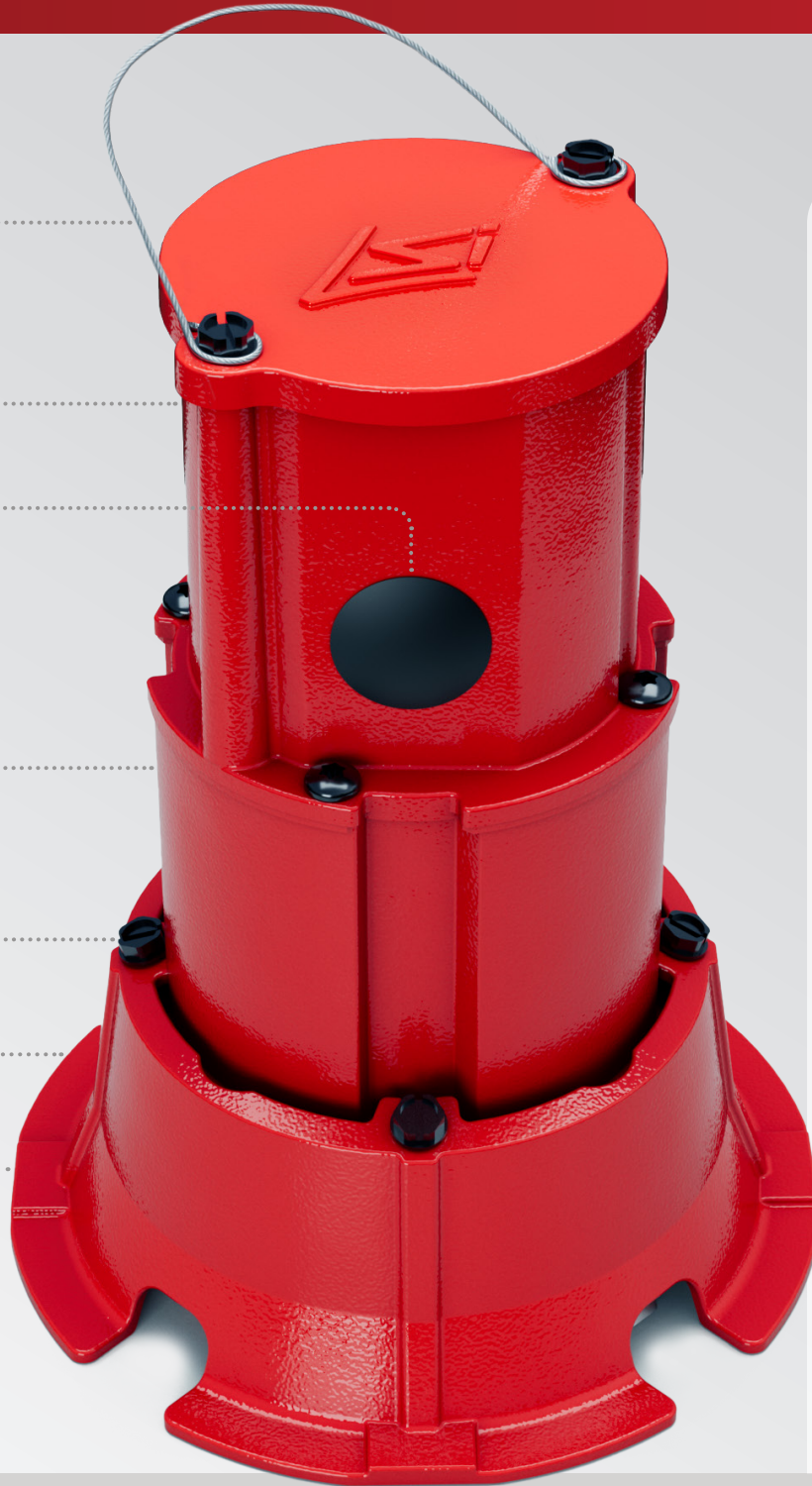


REDiMount™

The Revolutionary Canopy Installation System



Easy Lift
Hand/Hoist Strap

Integrated
Junction Box

Weather Resistant
Plugs Included

Rugged
Die-cast Aluminum

Tight Mount
Screws Included

Secure
Locking Collar

Aligned
Straight Edge for
Alignment



Preferred LED Canopy Fixture

Scottsdale Vertex (SCV)

- Driver access from below
- Variety of color temperatures
- Multiple & custom lumen packages
- Optional forward throw optics
- Available with integrated controls

Waterproof
Gasket



Quick Connect
Power Plug

INSTALLATION IMPROVED



Reliable

100% Water Resistant



Simplified

75% Fewer Components



Quick

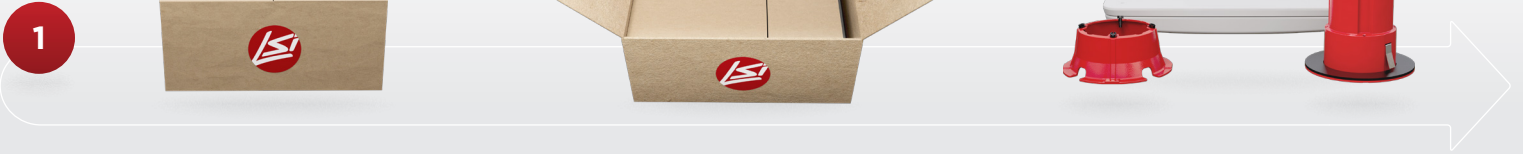
50% Faster



Visit and learn more!

LSIcorp.com/rcs





1

Remove LED luminaire, REDiMount capsule, and locking collar from the box.



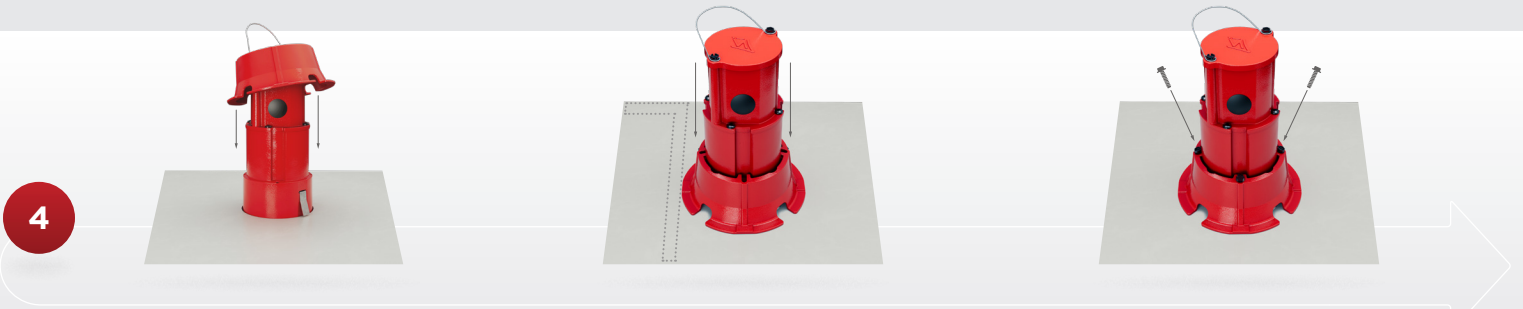
2

Plug in quick connect, push down and lock on capsule to the luminaire. Drill a 4" hole into the mounting location of the canopy; Lift or hoist the luminaire with connected REDiMount using the affixed hoist strap up to the canopy.



3

Push the luminaire with connected capsule through the hole until you here the torsion clips click into place. Repeat this process from below the canopy with every fixture. Move to the top of the canopy making sure to bring the locking collars with you.



4

Slide the locking collar over the capsule. Align the REDiMount to a rib on the canopy using a square. Secure the four screws into the capsule making sure to use between 25-35 inch-pounds of torque. Repeat this process on top of the canopy with every fixture.

View the installation video at LSIcorp.com/product/redimount/ to learn more!

