



**INDUSTRIAL
COMPARISON**

GUIDE

TABLE OF CONTENTS

OUR STORY

Industry Experience 2

YOUR INDUSTRIAL FACILITY

Illustrated View of Products & Solutions 3

HIGH BAY PRODUCT COMPARISON

Linear & Round High Bay Fixtures 5

ENCLOSED & GASKETED PRODUCT COMPARISON

Linear Fixtures for Special Applications 7

STRIP LIGHTING PRODUCT COMPARISON

LED Industrial Linear Fixtures 9

INTRODUCTION

Warehouses, manufacturing plants, distribution centers, and other industrial spaces are the hidden infrastructure that keep society moving forward. The food at your local grocery store, that order from your favorite e-commerce site, it all comes from a warehouse. The “cloud” where you store all your important files, pictures, or music isn’t a cloud at all, but a warehouse, holding massive servers and other high-tech equipment that make our modern lives possible.

If these facilities are the backbone of our economy, they require the very best people and equipment to operate at their peak. When it comes to meeting shipping and delivery deadlines, all the details matter.

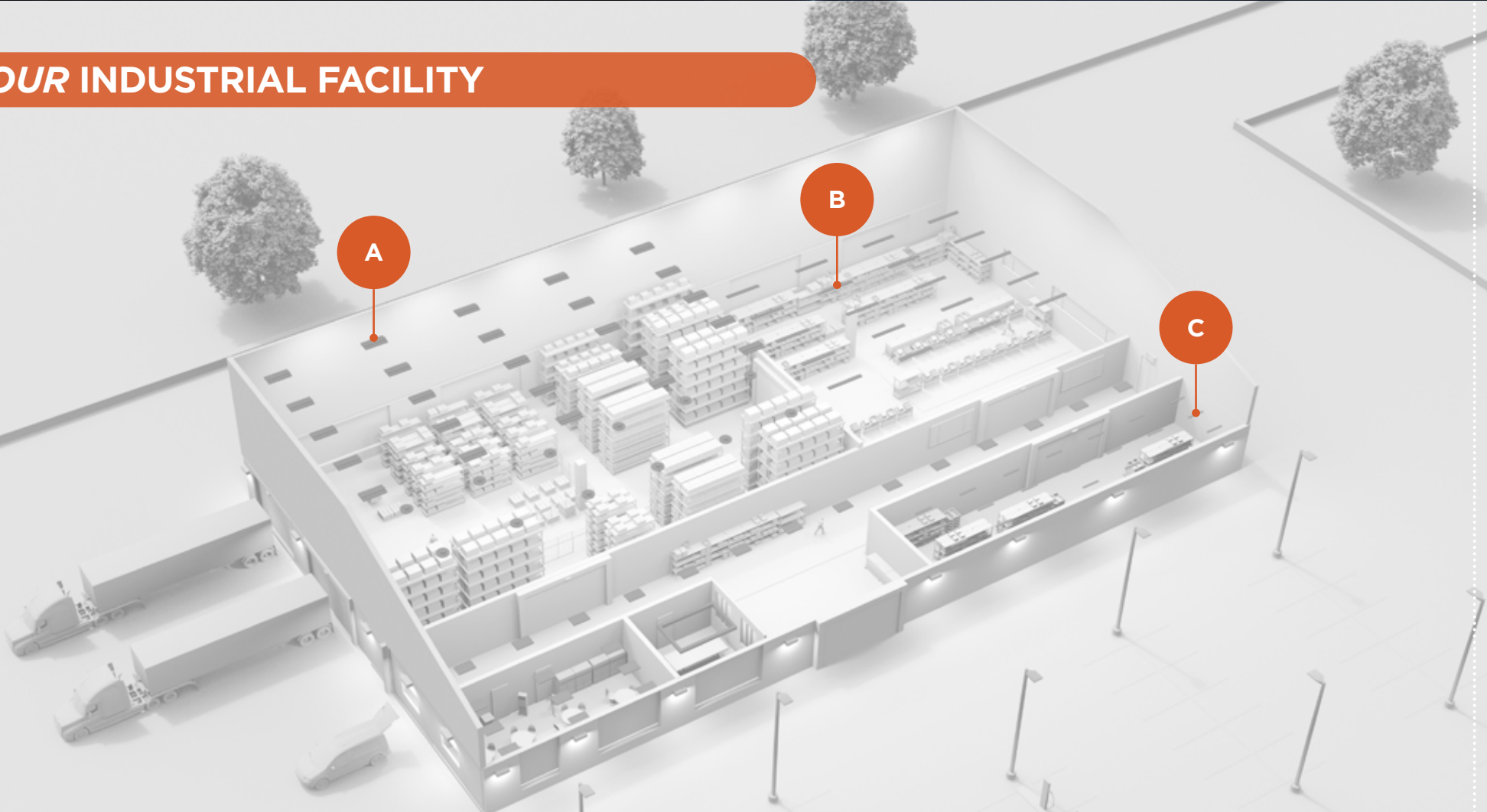
One of the most important details to keep the people and equipment productive, and the products moving in these industrial spaces, is reliable, quality lighting throughout the facility.

LSI delivers the most versatile lineup of industrial lighting solutions in the business. Manufactured in the U.S. and designed to enhance safety and increase productivity, our lighting solutions will also reduce energy costs.

Add to that our custom configuration and wireless control options for the ultimate in streamlined, low maintenance lighting solutions.



YOUR INDUSTRIAL FACILITY



A HIGH BAY

No two facilities are alike. That’s why we offer a robust line of linear and round high bay fixtures. With up to 100,000 lumens, available battery backup, numerous control and sensor options, there’s a high bay fixture for every application.

B STRIP LIGHTING

Strip lighting provides a flexible, cost effective solution for just about any space, due to its compact design. Available in different lengths, with multiple lumen packages, color temperatures, and mounting options, our lineup of strip lights bring uncompromising utility.

C ENCLOSED AND GASKETED

For harsh environments and speciality applications such as cold storage, our vaportite fixtures get the job done reliably with minimal maintenance. Available in various form factors and with different lens colors and other options, our lineup can meet any challenge.

NOT JUST INDUSTRIAL

Our industrial lighting solutions go beyond the typical industrial setting. From your local gym or favorite big box store, to grocery stores or even airplane hangers, we've got solutions for all of them. Regardless of the application or size, our vast array of industrial fixtures can be customized to suit the environment.

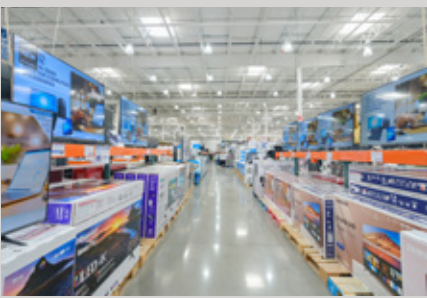


Light for any demanding environment

No matter the environment, dependable lighting is essential. Improve safety and efficiency while minimizing maintenance with our extensive line of industrial luminaires.



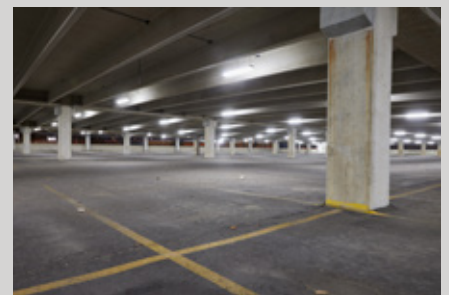
HIGH BAY



STRIPS



ENCLOSED & GASKETED

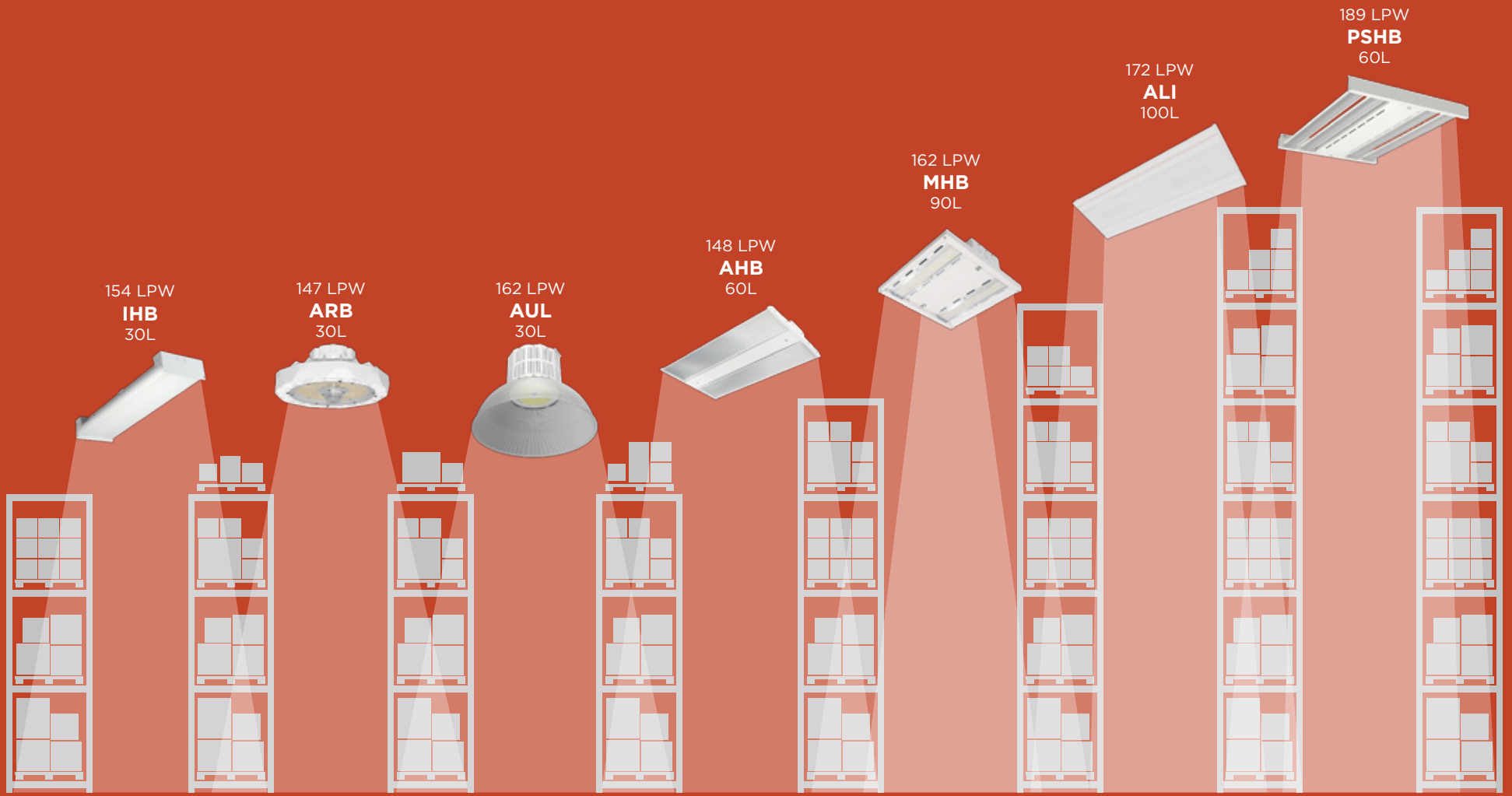
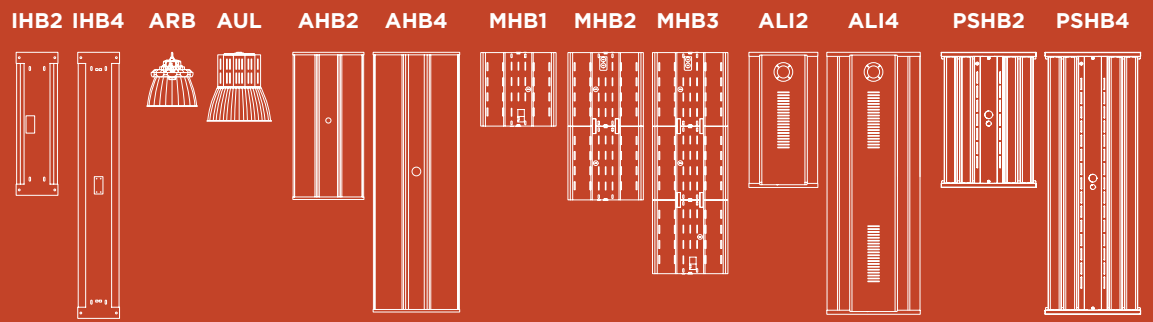




High Bay Position Guide

Linear & Round High Bay Fixtures for EVERY Application

- Energy efficient, easy contractor-friendly lighting solutions
- Lightweight designs allow for minimal installation effort
- Form factor and lumen packages for every opportunity



Max Lumens Per Watt (LPW) Listed Above. Max Lumen Output Listed Below.

High Bay Position Guide



	Industrial Linear High Bay (IHB)	Advantage High Bay LED (AHB)	Modular High Bay Light (MHB)	Alliance High Bay (ALI)	Peak Series High Bay (PSHB)	Advantage Round High Bay (ARB)	Aureus LED Round High Bay (AUL)
	★★★	★★★	★★★★	★★★★★	★★★★★	★★★	★★★★★
Applications	Warehouse, Manufacturing, Service Bays, Retail	Warehouse, Manufacturing, Service Bays, Retail, Gymnasium	Warehouse, Manufacturing, Service Bays, Retail, Gymnasium	Warehouse, Manufacturing, Service Bays, Retail, Gymnasium	Warehouse, Manufacturing, Service Bays, Retail, Sports	Light Duty, Warehouse, Manufacturing, Retail, Gymnasiums	Light Duty, Warehouse, Manufacturing, Retail, Gymnasiums,
Finish Available	White	White	White	White	White	White, Black	White, Black, Silver, Custom
Sizes Available	2', 4'	2', 4'	1', 2', 3' length	2', 4'	2', 4'	12" Diameter	15" Diameter
Mounting Height	Up to 40'	Up to 60'	Up to 60'	Up to 90'	Up to 60'	Up to 40'	Up to 40'
Delivered Lumens	9,000 to 30,000	18,000 to 60,000	12,000L to 90,000L	12,000 to 100,000	12,000 to 60,000	18,000 to 30,000 (Selectable)	6,000 to 30,000
CCT	4000K, 5000K	4000K, 5000K	4000K, 5000K	4000K, 5000K	4000K, 5000K	4000K, 5000K	3000K, 3500K, 4000K, 5000K
LPW	Up to 154 LPW	Up to 138 LPW	Up to 162 LPW	Up to 172 LPW	Up to 189 LPW	Up to 147 LPW	Up to 162 LPW
Temperature Rating	Up to 55C	Up to 50C	Up to 50C	Up to 60C	Up to 60C	50C	50C
Listings	Damp Location	Damp Location	Damp Location	Damp Location	Damp Location, IK06	Wet Location, IP65, IK08	Damp Location
DLC	Premium	Premium	Standard	Premium	Standard	Premium	Premium
Optics Options	No Lens, Acrylic (Diffuse)	Acrylic (Frosted)	Polycarbonate (Clear, Diffuse)	No Lens, Acrylic (Clear, Diffuse)	No Lens, Flat Acrylic, Curved Acrylic, Flat Polycarbonate (Clear and Diffuse for all)	Open w/Reflector (16")	Open w/Reflector (16" or 22")
Distributions	Wide (120)	Wide (120)	Wide (120), Narrow (30)	Wide (120), Narrow (30)	Field Rotatable LEDs (0-180 degree rotation), Aisle Optic (30)	Wide (120)	General
Voltage Range	120V-277V, 347V-480V	120V-277V, 347V-480V	120V-277V, 347V-480V	120V-277V, 347V-480V	120V-277V, 347V-480V	120V-277V, 347V-480V	120V-277V, 347V-480V
Battery Backup	Yes	Yes	Yes	Yes	120V-277V (up to 30W), 347V-480V (30W only)	Yes	Yes
Controls/Sensors	Simple Sensor (OMS only), Basic Bluetooth	Simple Sensor, Basic Bluetooth	Simple Sensor (OMS Only), Basic Bluetooth, AirLink Blue	Simple Sensor (OMS only), Basic Bluetooth, AirLink Blue, AirLink Synapse	Simple Sensor (OMS Only), Basic Bluetooth, AirLink Blue, AirLink Synapse	Simple Sensor (QCMS only)	Basic Bluetooth, AirLink Blue, AirLink Synapse
Pricing	\$\$	\$	\$\$	\$\$\$	\$\$\$	\$\$	\$\$\$

1 Not all versions of this product may be qualified. Please check the DLC Qualified Products List at www.designlights.org/QPL to confirm which versions are qualified.



Enclosed and Gasketed Position Guide

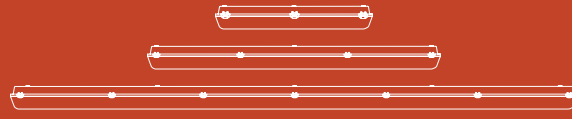
Linear Fixtures for Special Applications

- Energy efficient, easy contractor-friendly lighting solutions
- IP65/IP66/IP67 and NSF ratings for specialty applications
- Variety of lens colors and textures available for every application

EGW 4' and 8'



EG3 2', 4' and 8'



EGA 4'



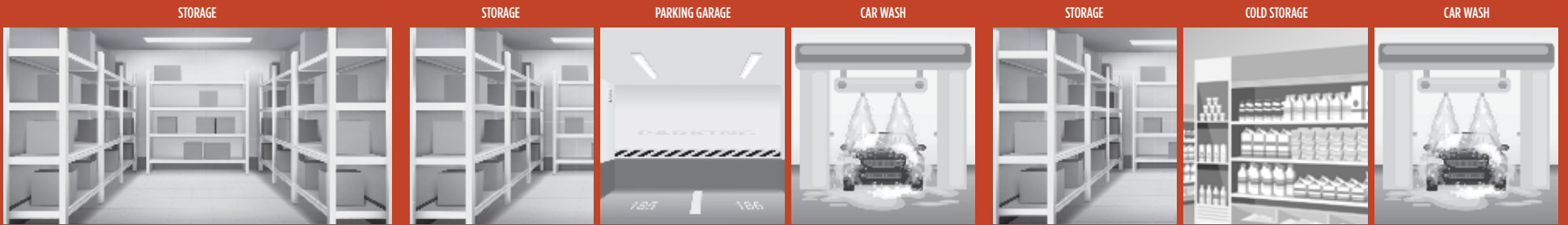
UP TO 10'



UP TO 14'



UP TO 30'



Enclosed and Gasketed Position Guide



	Enclosed and Gasketed - Advantage Series (EGA)	Enclosed and Gasketed Linear LED Fixture (EG3)	Enclosed and Gasketed Linear LED Fixture - Wide Wet Location (EGW)
	***	****	****
Applications	Warehouse, Manufacturing, Service Bays, Retail Cold Storage	Warehouse, Manufacturing, Service Bays, Retail Cold Storage	Warehouse, Manufacturing, Service Bays, Retail Cold Storage
Sizes Available	4'	2', 4', and 8'	4' and 8'
Luminaire Width	4 3/8"	6 3/4"	14 1/2"
Mounting Height	Up to 12'	Up to 16'	Up to 30'
Delivered Lumens	5,000L	4,000L - 13,000L	10,000L - 27,000L
CCT	4000K, 5000K	3500K, 4000K, 5000K	4000K, 5000K
Wattage	36	32 - 95	69 - 190
LPW	Up to 138 LPW	Up to 143 LPW	Up to 147 LPW
Temperature Rating	Up to 40C	Up to 40C	Up to 40C
Listings	Wet Location, IP65	Wet Location, IP65/IP66/IP67, NSF (Zone 2)	Wet Location, IP65/IP66/IP67, NSF (Zone 2)
DLC ¹	Premium	Premium	Premium
Lens Colors	Diffuse	Clear, Diffuse	Clear, Diffuse
Lens Types	Ribbed	Smooth ² , Ribbed	Smooth, Ribbed
Voltage Range	120V - 277V	120V - 480V	120V - 480V
Battery Backup	No	Yes	Yes
Controls/Sensors	None	External PIR Motion Sensor (OCSWL)	External PIR Motion Sensor (OCSWL)
Pricing	\$	\$\$	\$\$\$

¹ Not all versions of this product may be qualified. Please check the DLC Qualified Products List at www.designlights.org/OPL to confirm which versions are qualified.
² Not all versions of this product may be available with this lens type.



Strip Lighting Position Guide

LED Industrial Linear Fixtures

• Energy efficient, easy contractor-friendly lighting solutions

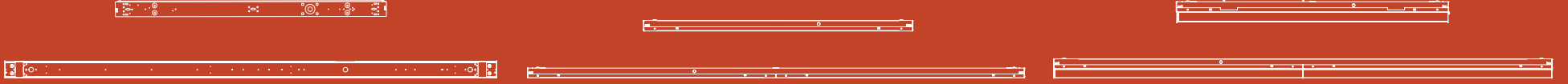
END VIEW



AST 4' and 8' UP TO 8,000L

S 2', 4' and 8' UP TO 18,000L

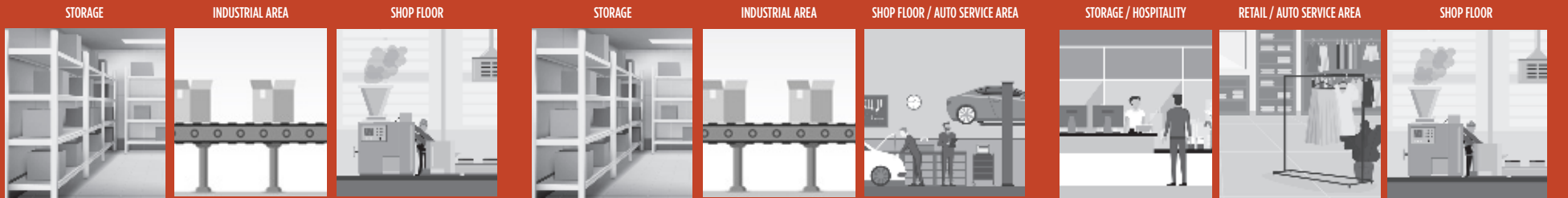
SDL 2', 4' and 8' UP TO 18,000L



INDIVIDUAL

INDIVIDUAL OR CONTINUOUS

INDIVIDUAL OR CONTINUOUS



Strip Lighting Position Guide



	Advantage Series LED Strip Fixture (AST) ★★★	Indoor Industrial LED Strip Light (S) ★★★★	Diffused Lens Strip (SDL) ★★★★★
Applications	Warehouse, Manufacturing, Service Bays, Retail, Utility and Storage Areas	Warehouse, Manufacturing, Service Bays, Retail, Utility and Storage Areas	Warehouse, Manufacturing, Service Bays, Retail, Utility and Storage Areas
Sizes Available	4' and 8'	2', 4', and 8'	2', 4', and 8'
Luminaire Width	4 3/8"	4 3/8"	3 3/8"
Mounting Height	Up to 12'	Up to 20'	Up to 20'
Mounting	Surface, Chain/Cable (sold separately)	Surface, Chain/Cable/Pendant (sold separately)	Surface, Chain/Cable/Pendant (sold separately)
Delivered Lumens	4,000L - 8,000L	1,500L - 18,000L	1,500L - 18,000L
CCT	3500K, 4000K, 5000K	3000K, 3500K, 4000K, 5000K	3000K, 3500K, 4000K, 5000K
Wattage	20 - 65	12 - 142	12 - 142
LPW	Up to 133 LPW	Up to 159 LPW	Up to 147 LPW
Temperature Rating	Up to 50C	Up to 50C	Up to 50C
Listings	Damp Location	Damp Location	Damp Location
DLC ¹	Premium	Premium	Premium
Lens	Diffuse Rounded	No Lens	Diffuse Rounded
Voltage Range	120V - 277V	120V - 480V	120V - 480V
Battery Backup	Yes	Yes	Yes
Retrofit Kits ²	No	Yes	Yes
Controls/Sensors	No	External PIR Motion Sensor (OMSx) AirLink Blue Controller (ALBC) AirLink Blue Controller & Sensor (ALBCS)	External PIR Motion Sensor (OMSx) AirLink Blue Controller (ALBC) AirLink Blue Controller & Sensor (ALBCS)
Pricing	\$	\$\$	\$\$

¹ Not all versions of this product may be qualified. Please check the DLC Qualified Products List at www.designlights.org/OPL to confirm which versions are qualified.
² Not all versions of this product may be available with this lens type.



LSI Controls Positioning Guide

Scalable controls solutions

- Simple and cost effective platforms
- Multiple options available to meet project specifications and code requirements
- Feature rich and competitive solutions
- Internal and external system devices
- Automation strategies with motion, daylight and time-clock controls
- Ability to integrate 3rd party sensors and controls



Simple Sensors

IMS, OMS, QCR

IMS

- Integral Motion Sensor

OMS

- Outbound Motion Sensor

QCR

- Quick Control Receptacle

Basic Bluetooth

IMSBTxL

IMSBTxL

- Integral multi sensor, Blue Tooth, x - Height, L - Lite

Advanced Bluetooth

IMSBTxLS

IMSBTxLS

- Integral multi sensor, Blue Tooth, x - Height, L - Lite, S - Scheduling

AirLink Blue

Bluetooth Mesh
ALBCS, QCR

ALBCS

- AirLink Blue Control Sensor

QCR

- Quick Control Receptacle

AirLink synapse

Wireless Mesh
ALSCS

ALSCS

- AirLink Synapse Control Sensor

LSI Controls Position Guide

		Simple Sensors	Basic Bluetooth	Bluetooth Mesh	Wireless Mesh
Photo Sensing (on / off based on ambient light intensity)		✓			
Daylight Harvesting (on / dim / off based on ambient light intensity)				✓	✓
Motion Sensing		✓	✓	✓	✓
Quick Control (LSI plug and play socket and sensor system)		✓		✓	
Scheduling			✓	✓	✓
Bluetooth Programmable			✓	✓	
Bluetooth Programmable & Controllable				✓	
Bluetooth mesh				✓	
Bluetooth direct			✓	✓	
2.4 Ghz mesh					✓
App based accessibility			✓	✓	
Browser based accessibility				✓	✓
Grouping / zoning- limited			✓		
Grouping / zoning unlimited				✓	✓
Manual override control devices				✓	✓
Remote Access				✓	✓
Calculated Energy Reporting				✓	
Actual Energy Reporting					✓
Building Management System integration - BACnet					✓
External Wireless Control Modules				✓	✓

Ingress Protection (IP) Ratings Guide

At LSI Industries, the IP (Ingress Protection) rating is central to our lighting solutions' design and longevity. Each fixture undergoes rigorous assessment for resistance against elements, from water ingress to dust and insect intrusion. For instance, a rating of IP65 ensures dust-tight protection and resistance against water jets, while IP68 guarantees dust protection and capability for continuous submersion in water. Trust in LSI's commitment to providing products that not only meet but exemplify industry standards.

IP Rating First Number (Solids)		
Level	Description for Solid Foreign Objects	Symbol
0	No protection	
1	Protected against objects > 50mm (hands)	
2	Protected against objects > 12mm (fingers)	
3	Protected against objects > 2.5mm (tools/wires)	
4	Protected against objects > 1mm (small tools)	
5	Protected against dust, limited ingress	
6	Totally protected against dust	

IP Rating Second Number (Liquids)		
Level	Description for Water & Liquid Exposure	Symbol
0	No protection	
1	Protected against dripping water or condensation	
2	Protected against sprays of water 15° from vertical	
3	Protected against sprays of water 60° from vertical	
4	Protected against water splashing and sprayed from all directions	
5	Protected against low pressure jets of water	
6	Protected against high pressure jets of water	
7	Protected against the effects of temporary submersion	
8	Protected against full submersion	
9	Protected against jets of water at high pressure, high temperature, and from any direction	

Example		
Level	Description	Symbol
IP 65	6 = Dust-tight + 5 = Protected against water jets.	

NSF Certifications

NSF Certification	Description of Locations/Use and Commentary	Typical Lighting Applications
Non-Food Zone	Area where direct contact with food products during normal operations would not be expected. Equipment is located outside the normal washdown area. There is a concern that the fixture will add contamination to the protected space or food product (e.g., cleanability—will the finish withstand cleaning, chipping paint, deteriorating paints or finishes, lens impact resistance, lamp breakage, etc.).	Kitchens: Food Storage; Dry process area; Damp process areas—no drip possibility
Splash Zone	Area where direct contact with food products during normal operations would not be expected; however, the fixture may be situated such that liquids used in the processing or cleaning procedures, may splash, spill, or otherwise soil—either intentionally or inadvertently—the surface of the fixture. There then is the potential for dripping or draining onto other surfaces or even the process. Since these fixtures are often used in washdown areas. Wet location listing is not sufficient. Fixtures must be tested to withstand high pressure hose washdown. The concerns of Non-Food Zone also apply.	Wet or damp process areas; high pressure purging and/or decontamination used in the process; Areas using hose washdown
Food Zone	Area where direct contact with food products is normally expected and surfaces from which the food may drip, drain, or splash back onto surfaces normally in contact with food. Equipment other than lighting fixtures typically require this certification (e.g. work tables cutting boards, others direct contact equipment).	Category not typically used for lighting

Impact Protection (IK) Ratings Guide

Understanding the IK Rating in Our Lighting Solutions:

The IK rating represents the robustness of an enclosure against external mechanical impacts, ensuring our lighting products stand the test of time in even the most challenging environments. Defined by the international standard IEC 62262, this rating offers a clear measure of how well a product can resist potential damage from accidental knocks, bumps, or any other physical impacts.

How Do We Measure It?

Each product's IK rating is derived from rigorous testing procedures where it's subjected to impacts of varying energy levels, measured in joules. For instance, an IK10-rated light has demonstrated the capacity to withstand a powerful 20 joules impact, guaranteeing exceptional durability. When you choose our lighting solutions, you're not just choosing brilliance; you're opting for unmatched resilience.

IK Rating Chart

Level	IK01	IK02	IK03	IK04	IK05	IK06	IK07	IK08	IK09	IK10
Weight (g/kg)	200g	200g	200g	200g	200g	500g	500g	5kg	5kg	5kg
Fall Distance (cm)	7.5cm	10cm	17.5cm	25cm	35cm	10cm	20cm	10cm	20cm	40cm
Energy in Joules (J)	0.15 J	0.20 J	0.35 J	0.50 J	0.70 J	1.00 J	2.00 J	5.00 J	10.00 J	20.00 J
Impact										

Visit us online or contact your account manager for more information.

LSIcorp.com | (800) 436-7800

