



# Linear Area Light (LAL4)

## Outdoor Linear Area Light



### OVERVIEW

Lumen Package (lm)	3,000 - 18,000
Wattage Range (W)	24 - 144
Efficacy Range (LPW)	120 - 135
Weight lbs (kg)	7.6 - 12.3 (3.4 - 5.6)
Controls	IMSBT, ALB, 7-Pin, PCI

### QUICK LINKS

## FEATURES & SPECIFICATIONS

### Construction

- Formed housing.
- Fully enclosed weather-tight housing contains factory prewired drivers and field connections.
- Easily accessible electrical components via driver cover.
- Luminaire is proudly made in the U.S.
- Fixtures are finished with LSI's DuraGrip® polyester powder coat finishing process. The DuraGrip finish withstands extreme weather changes without cracking or peeling. Other standard LSI finishes available. Consult factory.
- Shipping weight: TBD lbs in carton.

### Optical System

- Select high-brightness LEDs in 2700K, 3000K, 3500K, 4000K, 5000K
- Minimum CRI of 80
- Distribution types 2, 3, 4 and 5 available - asymmetric optics are factory rotatable.
- State-of-the-Art silicone optics deliver industry leading optical control with an integrated gasket
- Zero Uplight

### Electrical

- High-performance driver features overvoltage, under-voltage, short-circuit and over temperature protection.
- Standard Universal Voltage (120-277 VAC) Input 50/60 Hz or optional High Voltage (347-480 VAC)
- Field replaceable 10kV surge protection device meets a minimum Category C Low operation (per ANSI/IEEE C62.41.2)
- Driver is fully encased in potting material for moisture resistance and complies with FCC standards. Driver and key electronic components can easily be accessed.
- Operating temperature: -40°C to +40°C (-40°F to +104°F).
- 0-10V dimming (10% - 100%) standard. Must specify EXT option for dimming leads.
- Total harmonic distortion (THD): <20% Power factor (PF): >.90

### Controls

- Optional integral passive infrared Bluetooth™ motion and photocell sensor. Fixtures operate independently and can be commissioned via iOS or Android configuration app.
- LSI's AirLink™ wireless control system options reduce energy and maintenance costs while optimizing light quality 24/7.

### Installation

- Designed to mount to a square pole.
- Utilizes LSI's B2 drill pattern.

### Warranty

- LSI luminaires carry a 5-year limited warranty. Refer to <https://www.lsicorp.com/resources/terms-conditions-warranty/> for more information.

### Listings

- Listed to UL 1598 and UL 8750.
- Title 24 Compliant; see local ordinance for qualification information.
- Suitable for wet Locations
- 1.5G vibration rating.
- Meets Buy American Act requirements
- IDA compliant; with 3000K color temperature selection.

# Linear Area Light (LAL4) Outdoor Linear Area Light

Type : \_\_\_\_\_

 **Have questions?** Call us at (800) 436-7800

## ORDERING GUIDE

TYPICAL ORDER EXAMPLE: LAL4 48 12L 3 UNV 30K8 BLK ALBCS1				
Prefix	Length	Lumen Package <sup>2</sup>	Distribution	Rotation <sup>3</sup>
LAL4 <sup>1</sup> - 4" Linear Area Light	32 - 32" (6L max) 40 - 40" (12L max) 48 - 48"	3L - 3,000 lumens 6L - 6,000 lumens 9L - 9,000 lumens 12L - 12,000 lumens 15L - 15,000 lumens 18L - 18,000 lumens	2 - Type 2 3 - Type 3 4 - Type 4 5 - Type 5	<b>Blank</b> - No Rotation <b>L</b> - Optics rotated left 90° <b>R</b> - Optics rotated right 90°
Voltage	Color Temperature/Rendering	Finish	Controls	
UNV - Universal Voltage (120-277V) HV - High Voltage (347-480V)	27K8 - 2700K CCT / 80CRI 30K8 - 3000K CCT / 80CRI 35K8 - 3500K / 80CRI 40K8 - 4000K CCT / 80CRI 50K8 - 5000K CCT / 80CRI	BRZ - Dark Bronze BLK - Black GMG - Gun Metal Gray GPT - Graphite MSV - Metallic Silver WHT - White PLP - Platinum Plus SVG - Satin Verde Green	<b>Blank</b> - None <b>Wireless Controls System</b> ALBCS1 - AirLink Blue Wireless Motion & Photo Sensor Controller (8-24' mounting height) <sup>4</sup> ALBCS2 - AirLink Blue Wireless Motion & Photo Sensor Controller (25-40' mounting height) <sup>4</sup> ALBMR1 - AirLink Blue Wireless Multi-Range Sensor Controller (8-15' MH) <sup>4</sup> <b>Stand-Alone Controls</b> EXT - 0-1.0v Dimming leads extended to housing exterior CR7P - 7 Pin Control Receptacle ANSI C1.36.41 <sup>5</sup> IMSBTL1 - Integral Bluetooth™ Motion and Photocell Sensor (8-24' MH) <sup>4</sup> IMSBTL2 - Integral Bluetooth™ Motion and Photocell Sensor (25-40' MH) <sup>4</sup> <b>Button Type Photocells</b> PC120 - 120V PC1208-277 - 208-277V PC1347 - 347V	



**Need more information?**  
[Click here for our glossary](#)

**Have additional questions?**  
 Call us at (800) 436-7800



## ACCESSORY ORDERING INFORMATION<sup>6</sup>

Part Number	Description
122514	PC120 Photocell for use with CR7P option (120V) <sup>7</sup>
122515	PC208-277 Photocell for use with CR7P option (208V, 240V, 277V) <sup>7</sup>
122516	Twist Lock Photocell (347V) for use with CR7P <sup>7</sup>
1225180	Twist Lock Photocell (480V) for use with CR7P <sup>7</sup>
661409	AirLink 5 Pin Twist Lock Controller <sup>7</sup>
661410	AirLink 7 Pin Twist Lock Controller <sup>7</sup>
149328	Shorting Cap for use with CR7P

## FUSING OPTIONS<sup>8</sup>

Part Number	Description
Single Fusing (120V)	See <a href="#">Fusing Accessory Guide</a>
Single Fusing (277V)	
Double Fusing (208V, 240V)	
Double Fusing (480V)	
Double Fusing (347V)	

## MOUNTING ACCESSORIES ORDERING INFORMATION<sup>6</sup>

Part Number	Description
674299CLR	Square Pole Tenon Adapter
740022CLR	15° Square Pole Quick Mount Bracket
750441CLR	Wall Mount Bracket
751534CLR	Square Pole Quick Mount Bracket
BKS PQMH RD B2 CLR	Round Pole Quick Mount Bracket
BKS PQ15 RD B2 CLR	15° Round Pole Quick Mount Bracket
75163 1	10' Linear Bird Spike Kit (3-4' Recommended per Luminaire)
751632	Silicone Adhesive for Bird Spike Kit (Covers Approximately 25' of Linear Spike)

1 Use with B2 drilling pattern  
 2 Custom lumen and wattage packages available, consult factory. Values are within industry standard tolerances but not DLC listed.  
 3 Not available with type 5 distribution  
 4 Motion sensors are field configurable via an app that can be downloaded from your smartphone's native app store. See controls section for more details.

5 Control device or shorting cap must be ordered separately. See Accessory Ordering Information.  
 6 Accessories are shipped separately and field installed.  
 7 Factory installed CR7P option required. See Options.  
 8 Fusing must be located in the hand hole of pole.  
 9 "CLR" to be replaced by paint finish selection. See Finish options for paint color selections.

# Linear Area Light (LAL4) Outdoor Linear Area Light

Type : \_\_\_\_\_

 Have questions? Call us at (800) 436-7800

## PERFORMANCE

Delivered Lumens <sup>1</sup>															
Lumen Package	Distribution	CRI	2700K CCT			3000K CCT			4000K CCT			5000K CCT			Wattage
			Delivered Lumens	Efficacy	BUG Rating	Delivered Lumens	Efficacy	BUG Rating	Delivered Lumens	Efficacy	BUG Rating	Delivered Lumens	Efficacy	BUG Rating	
3L	2	70	2732	109	B1 U0 G1	2891	116	B1 U0 G1	3047	122	B1 U0 G1	3038	122	B1 U0 G1	25
	3	70	2682	109	B1 U0 G1	2838	115	B1 U0 G1	2991	121	B1 U0 G1	2982	121	B1 U0 G1	
	4	70	2682	108	B1 U0 G1	2838	114	B1 U0 G1	2991	120	B1 U0 G1	2982	120	B1 U0 G1	
	5	70	2727	110	B2 U0 G1	2885	116	B2 U0 G1	3041	124	B2 U0 G1	3032	122	B2 U0 G1	
6L	2	70	5442	112	B1 U0 G1	5758	119	B1 U0 G1	6069	125	B1 U0 G1	6051	125	B1 U0 G1	48
	3	70	5342	110	B1 U0 G1	5652	117	B1 U0 G1	5957	123	B1 U0 G1	5940	123	B1 U0 G1	
	4	70	5342	110	B1 U0 G1	5652	117	B1 U0 G1	5957	123	B1 U0 G2	5940	123	B1 U0 G2	
	5	70	5432	112	B3 U0 G1	5746	119	B3 U0 G1	6057	125	B3 U0 G1	6039	125	B3 U0 G1	
9L	2	70	8108	113	B1 U0 G1	8578	120	B1 U0 G2	9042	126	B2 U0 G2	9015	126	B2 U0 G2	72
	3	70	7959	111	B2 U0 G2	8420	118	B2 U0 G2	8876	124	B2 U0 G2	8849	124	B2 U0 G2	
	4	70	7959	111	B2 U0 G2	8420	118	B2 U0 G2	8876	124	B2 U0 G2	8849	124	B2 U0 G2	
	5	70	8092	113	B3 U0 G2	8561	120	B3 U0 G2	9024	126	B3 U0 G2	8997	126	B3 U0 G2	
12L	2	70	10850	111	B2 U0 G2	11478	117	B2 U0 G2	12099	123	B2 U0 G2	12063	123	B2 U0 G2	98
	3	70	10650	108	B2 U0 G2	11267	115	B2 U0 G2	11876	121	B2 U0 G2	11841	121	B2 U0 G2	
	4	70	10650	108	B2 U0 G2	11267	115	B2 U0 G2	11876	121	B2 U0 G2	11841	121	B2 U0 G2	
	5	70	10828	110	B4 U0 G2	11456	117	B4 U0 G2	12075	123	B4 U0 G2	12039	123	B4 U0 G2	
15L	2	70	13629	117	B2 U0 G2	14418	124	B2 U0 G2	15198	130	B2 U0 G2	15153	130	B3 U0 G3	117
	3	70	13378	115	B3 U0 G3	14153	121	B3 U0 G3	14919	128	B3 U0 G3	14874	127	B3 U0 G3	
	4	70	13378	115	B2 U0 G2	14153	121	B2 U0 G2	14919	128	B3 U0 G3	14874	127	B2 U0 G2	
	5	70	13602	117	B4 U0 G2	14390	123	B4 U0 G2	15168	130	B4 U0 G2	15123	130	B4 U0 G2	
18L	2	70	16251	113	B2 U0 G2	17192	120	B2 U0 G2	18122	126	B3 U0 G3	18068	126	B3 U0 G3	144
	3	70	15952	111	B3 U0 G3	16876	118	B3 U0 G3	17789	124	B3 U0 G3	17736	124	B3 U0 G3	
	4	70	15952	111	B3 U0 G3	16876	118	B3 U0 G3	17789	124	B3 U0 G3	17736	124	B3 U0 G3	
	5	70	16219	113	B4 U0 G2	17158	120	B4 U0 G2	18086	126	B4 U0 G2	18032	126	B4 U0 G2	

Electrical Data (AMPS) <sup>2</sup>							
Lumen Package	Wattage	120V	208V	240V	277V	347V	480V
3L	25	0.20	0.12	0.10	0.09	0.07	0.05
6L	48	0.40	0.23	0.20	0.17	0.14	0.10
9L	72	0.60	0.34	0.30	0.26	0.21	0.15
12L	98	0.82	0.47	0.41	0.35	0.28	0.20
15L	117	0.97	0.56	0.49	0.42	0.34	0.24
18L	144	1.20	0.69	0.60	0.52	0.41	0.30

1 LED Chips are frequently updated therefore values are nominal.  
 2 Electrical data at 25C (77F). Actual wattage may differ by +/-10%.

# Linear Area Light (LAL4) Outdoor Linear Area Light

Type : \_\_\_\_\_

 Have questions? Call us at (800) 436-7800

## PHOTOMETRICS

Luminaire photometry has been conducted by a NVLAP accredited testing laboratory in accordance with IESNA LM-79-08. As specified by IESNA LM-79-08 the entire luminaire is tested as the source resulting in a luminaire efficiency of 100%.

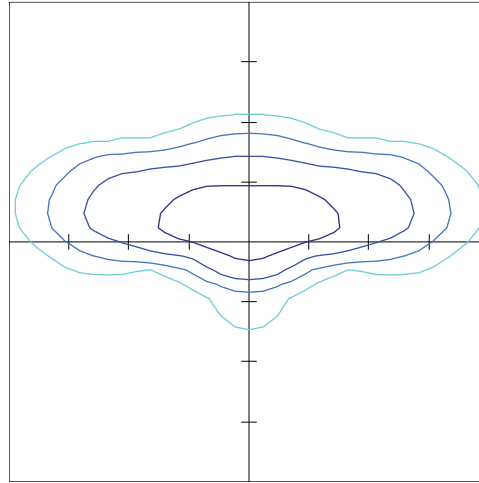
See the individual product page on <https://www.lsicorp.com/> for detailed photometric data.

### LAL4-48-18L-2-40K8

Luminaire Data	
Type 2 Distribution	
Description	4000 Kelvin, 80 CRI
Delivered Lumens	18,121
Watts	144
Efficacy	126
IES Type	Type II Medium
BUG Rating	B3 U0 G3

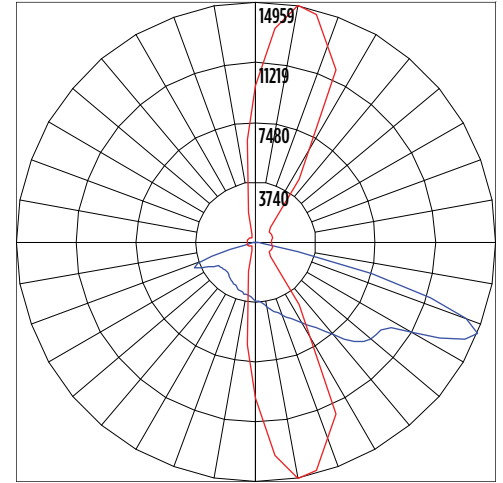
Zonal Lumen Summary		
Zone	Lumens	% Luminaire
Low (0-30°)	4,024	22%
Medium (30-60°)	8,961	49%
High (60-80°)	4,994	28%
Very High (80-90°)	142	1%
Uplight (90-180°)	-	0%
<b>Total Flux</b>	<b>18,121</b>	<b>100%</b>

#### ISO Footcandle



20' Mounting Height / 20' Grid Spacing  
 5 FC 2 FC 1 FC 0.5 FC

#### Polar Curve



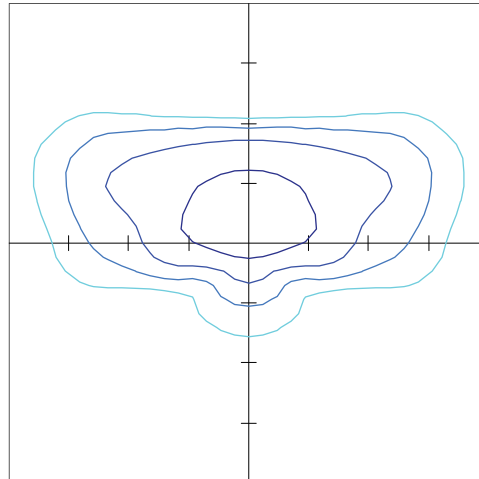
Vertical Plane Horizontal Cone

### LAL4-48-18L-3-40K8

Luminaire Data	
Type 3 Distribution	
Description	4000 Kelvin, 80 CRI
Delivered Lumens	17,789
Watts	144
Efficacy	124
IES Type	Type III Short
BUG Rating	B3 U0 G3

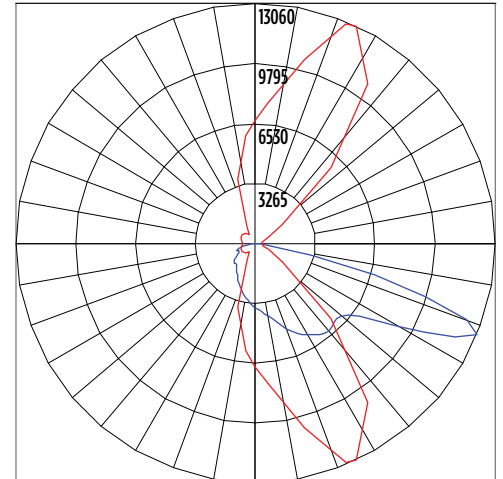
Zonal Lumen Summary		
Zone	Lumens	% Luminaire
Low (0-30°)	3,201	18%
Medium (30-60°)	8,852	49%
High (60-80°)	5,515	30%
Very High (80-90°)	221	1%
Uplight (90-180°)	-	0%
<b>Total Flux</b>	<b>17,789</b>	<b>100%</b>

#### ISO Footcandle



20' Mounting Height / 20' Grid Spacing  
 5 FC 2 FC 1 FC 0.5 FC

#### Polar Curve



Vertical Plane Horizontal Cone

# Linear Area Light (LAL4) Outdoor Linear Area Light

Type : \_\_\_\_\_

 Have questions? Call us at (800) 436-7800

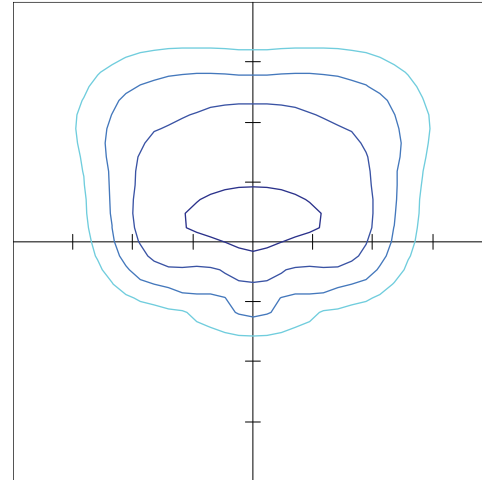
## PHOTOMETRICS

### LAL4-48-18L-4-40K8

Luminaire Data	
Type 4 Distribution	
Description	4000 Kelvin, 80 CRI
Delivered Lumens	17,790
Watts	144
Efficacy	124
IES Type	Type IV Short
BUG Rating	B3 U0 G3

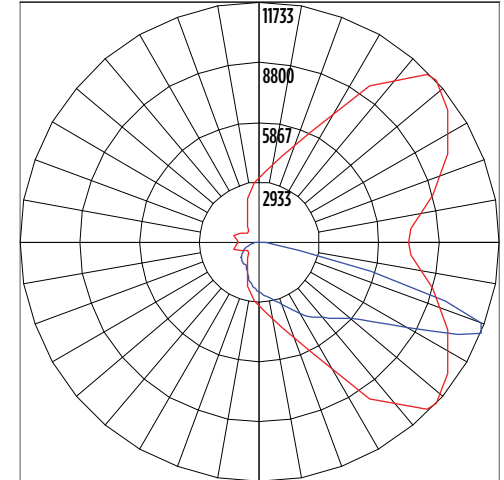
Zonal Lumen Summary		
Zone	Lumens	% Luminaire
Low (0-30°)	2,126	12%
Medium (30-60°)	8,638	48%
High (60-80°)	6,757	37%
Very High (80-90°)	270	1%
Uplight (90-180°)	-	0%
<b>Total Flux</b>	<b>17,790</b>	<b>100%</b>

### ISO Footcandle



20' Mounting Height / 20' Grid Spacing  
 5 FC 2 FC 1 FC 0.5 FC

### Polar Curve



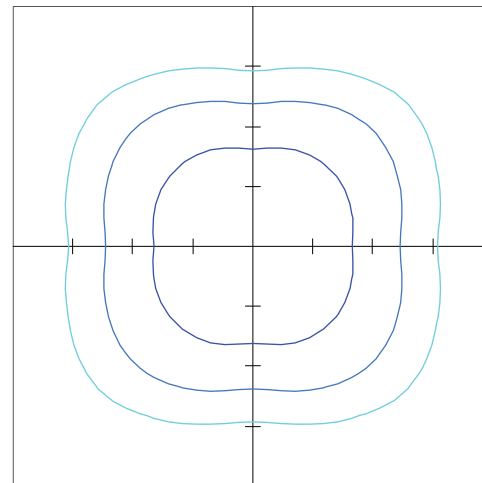
Vertical Plane Horizontal Cone

### LAL4-48-18L-5-40K8

Luminaire Data	
Wide Distribution	
Description	4000 Kelvin, 80 CRI
Delivered Lumens	18,086
Watts	144
Efficacy	126
IES Type	Type VS Short
BUG Rating	B4 U0 G2

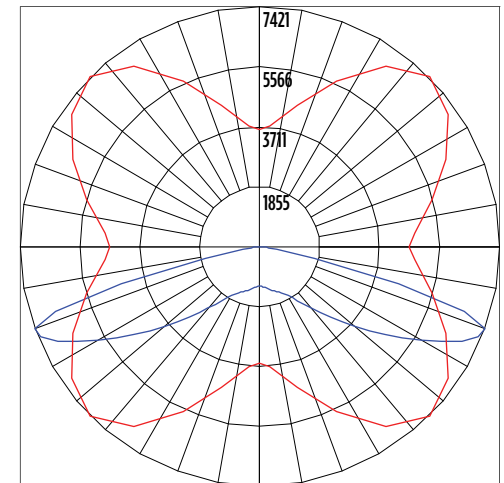
Zonal Lumen Summary		
Zone	Lumens	% Luminaire
Low (0-30°)	1,248	7%
Medium (30-60°)	7,793	43%
High (60-80°)	8,870	49%
Very High (80-90°)	175	1%
Uplight (90-180°)	-	0%
<b>Total Flux</b>	<b>18,086</b>	<b>100%</b>

### ISO Footcandle



20' Mounting Height / 20' Grid Spacing  
 5 FC 2 FC 1 FC 0.5 FC

### Polar Curve



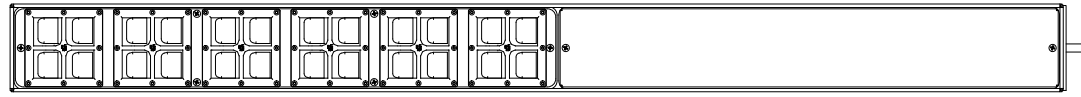
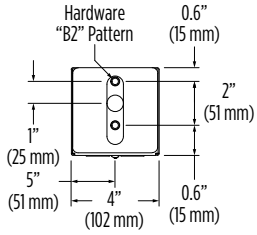
Vertical Plane Horizontal Cone

# Linear Area Light (LAL4) Outdoor Linear Area Light

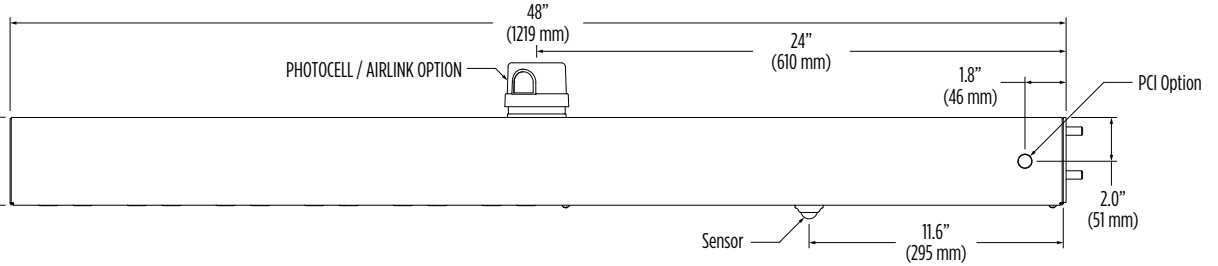
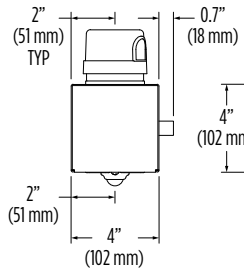
Type: \_\_\_\_\_

 Have questions? Call us at (800) 436-7800

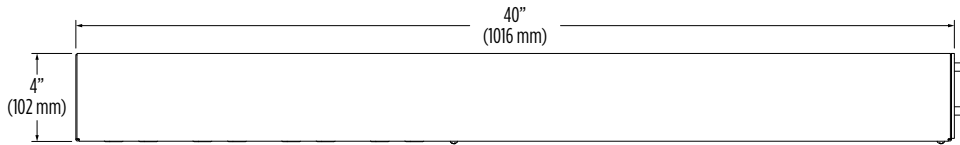
## PRODUCT DIMENSIONS



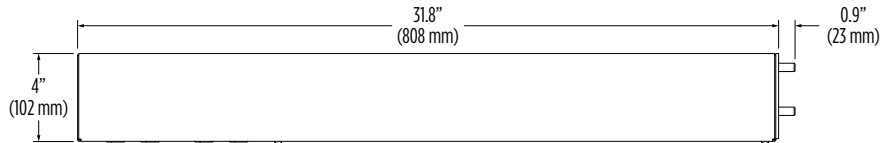
**LAL4 48**



**LAL4 40**



**LAL4 32**



Luminaire EPA Chart - LAL4				
Configurations		32"	40"	48"
Single	D90°	1.1	1.3	1.6
D180°	T90°	2.2	2.6	3.2

# Linear Area Light (LAL4) Outdoor Linear Area Light

Type : \_\_\_\_\_

 **Have questions?** Call us at (800) 436-7800

## CONTROLS

### Integral Bluetooth™ Motion and Photocell Sensor (IMSBTxL)

Slim low profile sensor provides multi-level control based on motion and/or daylight. Sensor controls 0-10 VDC LED drivers and is IP66 rated for cold and wet locations (-40°F to 167°F). Two unique PIR lenses are available and used based on fixture mounting height. All control parameters are adjustable via an iOS or Android App capable of storing and transmitting sensor profiles.

[Click here to learn more details about IMSBT](#)



LEVITON App



Apple



Android

### AirLink Blue (ALBCSx)

Wireless Bluetooth Mesh Outdoor Lighting Control System that provides energy savings, code compliance and enhanced safety/security for parking lots and parking garages. Three key components; Bluetooth wireless radio/sensor controller, Time Keeper and an iOS App. Capable of grouping multiple fixtures and sensors as well as scheduling time-based events by zone. Radio/Sensor Controller is factory integrated into Area/ Site, Wall Mounted, Parking Garage and Canopy luminaires.

[Click here to learn more details about AirLink Blue](#)



AirLink Blue App



Apple

### Sensor Sequence of Operations

Standard Programming	On Event	Off Event	On Light Level	Dim Light Level	Daylight Harvesting	Delay To Off	Sensitivity
OMSBTxL/IMSBTxL	Motion	No Motion	100%	N/A	On; Auto Calibration	20 minutes	High
OMS	Motion	No Motion	N/A	N/A	N/A	30 seconds	Auto

Operation	Description
<b>On Event</b>	Trigger that activates lights to turn on; either automatic via motion detected or manually activated via push of button.
<b>Off Event</b>	Trigger that activates lights to turn off; either automatic via no motion detected or manually activated via push of button.
<b>On Light Level</b>	The light level that the fixtures will turn on to when ON EVENT occurs.
<b>Dim Light Level</b>	The light level that the fixtures will dim down to when no motion is detected.
<b>Delay to Dim</b>	The amount of time after which no motion is detected that the fixtures will be triggered to dim down. This sequence is optional, and sensor can be programmed to only trigger the fixture to turn off by entering 100% in this field.
<b>Delay to Off</b>	The amount of time after which no motion is detected that the fixtures will be triggered to turn off. If delay to dim is part of the programmed functionality, this is the amount of time after which no motion is detected after the fixture have already dimmed down.
<b>Sensitivity</b>	The sensitivity can be set to high, medium, low, or auto where applicable. High will detect smaller, simple motions. Low will only detect larger more complex motions. Auto temperature calibration adjusts the PIR sensitivity as ambient temperature rises to increase detection of heat movement through the field of view.