



POLES

Dual Deal

5-Day Quick Shipment Program

SSA/SMA

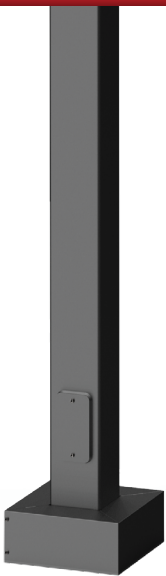
Luminaire / Pole Combination

5-Day Quick Shipment Program



LSI offers our most competitive area light paired with our highest quality poles in a deal that offers...

Speed & Savings



Commercial Area (SSA/SMA) Luminaire

- » 5 Lumen Packages up to 42,000 Lumens
- » Single, Double, Triple & Quad Configurations
- » 4000K & 5000K (70 CRI)
- » Type FT
- » Bronze Finish

5-Day Quick Ship

- » Poles are manufactured and shipped from Cincinnati, OH within 5 days
- » Luminaires are stocked in Burlington, NC and shipped within 5 days.
- » All Configurations Available Less Anchor Bolts (Anchor Bolts Available to Ship Before Product)

4SQ Series Poles

- » Square Straight Steel Construction w/Base Cover Included
- » 4" Square 11 Gauge Wall Thickness
- » 20' & 25' Lengths
- » Included Pole Base Accommodates 8"-11" bolt circles using four 3/4" diameter anchor bolts
- » Bronze Dura-Grip Finish



Ordering Guide*

Product Series	Lumens-Quantity	Distribution	Voltage	CCT	Square Straight Pole	Color	Anchor Bolts
PXSSA	12L - 12,000	1 - Single Head	UNV - Universal (120-277V)	40 - 4000K 50 - 5000K	4SQ20 - 4", 20 feet 11-gauge 4SQ25 - 4", 25 feet 11-gauge	(Blank) - Bronze Finish	AB - with anchor bolts/template LAB - Less anchor bolts/template
	18L - 18,000	2 - 2 @ 90° or 180°					
	24L - 24,000	3 - 3 @ 90°					
	4 - 4 @ 90°						
PXSMA	28L - 28,000						
	42L - 42,000						

Example: **PXSSA 18L 1 5W UNV 40 4SQ20**

Note: To pre-ship anchor bolts, order combo less anchor bolts (LAB) and order anchor bolts separately as an additional line item.

*15 piece luminaire head order limit for 5-day quick ship, 25 piece order limit for 10-day quick ship qualification

SSA DELIVERED LUMENS*

Lumen Package	Distribution	CRI	4000K			5000K			Wattage
			Delivered Lumens	Efficacy	BUG Rating	Delivered Lumens	Efficacy	BUG Rating	
12L	FT	70	12,341	144	B2-U0-G3	12,208	142	B2-U0-G3	85
18L	FT	80	17,277	143	B3-U0-G3	17,090	141	B3-U0-G3	121
24L	FT	80	23,865	136	B3-U0-G3	23,607	135	B3-U0-G3	175

LUMINAIRE EPA CHART

Tilt Degree	Single	D180°	D90°	T90°	TN120°	Q90°
0°	0.5	1.0	0.7	1.0	1.0	1.0

*LED Chips are frequently updated therefore values are nominal.

SMA DELIVERED LUMENS*

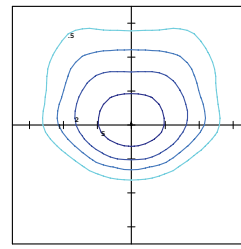
Lumen Package	Distribution	CRI	4000K			5000K			Wattage
			Delivered Lumens	Efficacy	BUG Rating	Delivered Lumens	Efficacy	BUG Rating	
28L	FT	70	27,547	138	B4-U0-G3	27,249	137	B4-U0-G3	200
42L	FT	70	40,238	136	B4-U0-G4	39,803	135	B4-U0-G4	296

LUMINAIRE EPA CHART

Tilt Degree	Single	D180°	D90°	T90°	TN120°	Q90°
0°	0.6	1.1	0.8	1.1	1.1	1.1

*LED Chips are frequently updated therefore values are nominal.

SSA/SMA Distribution Pattern



25' Mounting Height/25' Grid Spacing
 ■ 5 FC ■ 2 FC ■ 1 FC ■ 0.5 FC

Type FT

Dimensions

