



Catalog # : \_\_\_\_\_ Project : \_\_\_\_\_ Type : \_\_\_\_\_

Prepared By : \_\_\_\_\_ Date : \_\_\_\_\_

# Mirada Medium Wall Sconce (XWM)

## Outdoor Wall Sconce



### OVERVIEW

|                      |                      |
|----------------------|----------------------|
| Lumen Package        | 3,000 - 21,000       |
| Wattage Range        | 23 - 175             |
| Efficacy Range (LPW) | 125 - 158            |
| Weight lbs(kg)       | 27 (12.2)            |
| Control Options      | IMSBT, ALB, ALS, PCI |

### QUICK LINKS

## FEATURES & SPECIFICATIONS

### Construction

- Rugged die-cast aluminum housing contains factory prewired driver and optical unit. Hinged die-cast aluminum wiring access door located underneath.
- Galvanized-steel universal wall mount bracket comes standard with hinging mechanism to easily access the junction box wire connections without removing the luminaire.
- Optional pole-mounting bracket (XPMa) permits mounting to standard poles.
- Fixtures are finished with LSI's DuraGrip® polyester powder coat finishing process. The DuraGrip finish withstands extreme weather changes without cracking or peeling. Other standard LSI finishes available. Consult factory.
- Max shipping weight: 30lbs in carton

### Optical System

- State-of-the-Art one piece silicone optic provides industry leading optical control while also acting as an integrated gasket reducing system complexity and improving fixture reliability.
- Proprietary silicone refractor optics provide exceptional coverage and uniformity in Types 2, 3, 4, and FT distributions.
- Silicone optical material does not yellow or crack with age and provides a typical light transmittance of 93-95%.
- Zero uplight.
- 5000K, 4000K, 3500K, 3000K, and 2700K color temperatures per ANSI C78.377. Also Available in Phosphor Converted Amber with Peak intensity at 610nm.
- 70 or 80CRI Minimum.

### Electrical

- High-performance programmable driver features over-voltage, under-voltage, short-circuit and over temperature protection. Custom lumen and wattage packages available.

- 0-10V dimming (10% - 100%) standard.
- Standard Universal Voltage (120-277 Vac) Input 50/60 Hz or optional High Voltage (347-480 Vac).
- L80 Calculated Life: >100k Hours
- Total harmonic distortion (THD): <20%
- 3L to 12L operating temperature: -40°C to +50°C (-40°F to +122°F)
- 15L operating temperature: -40°C to +45°C (-40°F to +113°F).
- 18L operating temperature: -40°C to +40°C (-40°F to +104°F).
- 21L operating temperature: -40°C to +35°C (-40°F to +95°F).
- Power factor (PF): >.90
- Input power stays constant over life.
- Optional 10kV surge protection device meets a minimum Category C Low operation (per ANSI/IEEE C62.41.2).
- High-efficacy LEDs mounted to metal-core circuit board to maximize heat dissipation
- Components are fully encased in potting material for moisture resistance. Driver and key electronic components can easily be accessed via hinged door.
- Optional integral emergency battery pack provides 90-minutes of constant power to the LED system, ensuring code compliance. A test switch/indicator button is installed on the housing for ease of maintenance. The fixture delivers 1500 lumens during emergency mode.

### Controls

- Integral passive infrared Bluetooth™ motion sensor options. Fixtures operate independently and can be commissioned via an iOS or Android configuration app. Updates and modifications to the control strategy are easily implemented via an intuitive app.

- AirLink™ Blue wireless control system with technology partner Silvar incorporates Luminaire Level Lighting Controls (LLC) and high-end trim.

### Installation

- Universal wall mounting plate easily mounts directly to 4" octagonal or square junction box.
- 2 fasteners secure the hinged door underneath the housing and provide quick & easy access to the electrical compartment for installing/servicing.
- Optional terminal block accepts up to 12 ga wire.

### Warranty

- LSI luminaires carry a 5-year limited warranty. Refer to <https://www.lsicorp.com/resources/terms-conditions-warranty/> for more information.
- 1 Year warranty on Battery Back-up option.

### Listings

- Listed to UL 1598 and UL 8750.
- Meets Buy American Act requirements.
- DarkSky Approved with 3000K or warmer color temperature selection.
- Title 24 Compliant; see local ordinance for qualification information.
- Suitable for wet Locations.
- IP65 rated luminaire per IEC 60598.
- 3G rated for ANSI C136.31 high vibration applications when pole mounted (using optional XPMa bracket) or wall mounted.
- IK08 rated luminaire per IEC 66262 mechanical impact code
- DesignLights Consortium® (DLC) Premium qualified product. Not all versions of this product may be DLC Premium qualified. Please check the DLC Qualified Products List at [www.designlights.org/QPL](http://www.designlights.org/QPL) to confirm which versions are qualified.


Mirada Medium Wall Sconce (XWM) Outdoor Wall Sconce

Type : \_\_\_\_\_


 Have questions? Call us at (800) 436-7800

ORDERING GUIDE

| TYPICAL ORDER EXAMPLE: XWM 2 LED 03L 30 UE BRZ ALSC               |  |  |  |  |
|---|--|--|--|--|
| Family  | Distribution   | Light Source   | Lumen Package  | Color Temperature  |
| XWM - Mirada Medium Wall Sconce                                   | 2 - Type 2<br>3 - Type 3<br>4 - Type 4<br>FT - Type 4 Forward Throw  | LED  | 3L - 3,000<br>4L - 4,000<br>6L - 6,000<br>8L - 8,000<br>12L - 12,000<br>15L - 15,000<br>18L - 18,000<br>21L - 21,000<br><br>Custom Lumen Packages <sup>1</sup> | 50 - 5000K (70CRI)<br>50K8 - 5000K (80CRI)<br>40 - 4000K (70CRI)<br>40K8 - 4000K (80CRI)<br>35K8 - 3500K (80CRI)<br><br>DarkSky Approved CCT's<br>30 - 3000K (70 CRI)<br>30K8 - 3000K (80 CRI)<br>27K8 - 2700K (80 CRI)<br>AMB - Phosphor Converted Amber <sup>2</sup> |
| Voltage   | Finish   | Controls   |  | Options  |
| UE - Universal Voltage (120-277V)<br>HV - High Voltage (347-480V) | BLK - Black<br>BRZ - Dark Bronze<br>GMG - Gun Metal Gray<br>GPT - Graphite<br>MSV - Metallic Silver<br>PLP - Platinum Plus<br>SVG - Satin Verde Green<br>WHT - White | Blank - None<br><u>Wireless Controls</u><br>ALSC - AirLink Synapse Control System<br>ALSCS01 - AirLink Synapse Control System with 8-12' Motion Sensor<br>ALSCS02 - AirLink Synapse Control System with 12-20' Motion Sensor<br>ALBMR1LR - AirLink Blue Wireless Motion & Photo Sensor Controller (8 - 15') mounting height) <sup>3</sup><br>ALBMR2LR - AirLink Blue Wireless Motion & Photo Sensor Controller (16 - 40' mounting height) <sup>3</sup><br><u>Standalone Controls</u><br>DIM - 0-10v Dimming leads extended to housing exterior<br>IMSBT1L - Integral Bluetooth™ Motion and Photocell Sensor (8-24' MH) <sup>3,4</sup><br>IMSBT2L - Integral Bluetooth™ Motion and Photocell Sensor (25-40' MH) <sup>3,4</sup><br><u>Button Type Photocells</u><br>PCI120 - 120V<br>PCI208-277 - 208 -277V<br>PCI347 - 347V |  | Blank - None<br>BB - Battery Back-up (0°C) <sup>5</sup><br>CWBB - Cold Weather Battery Backup (-20°C) <sup>5</sup><br>XPPA - Pole Mounting Bracket<br>SP1 - 10kV Surge Protection<br>TB - Terminal Block   |



Need more information?  
Click here for our glossary

Have additional questions?  
Call us at (800) 436-7800

FUSING ACCESSORY ORDERING INFORMATION<sup>6</sup>

| Part Number         | Description                |
|---------------------|----------------------------|
| FK120 <sup>7</sup>  | FK120 - Single Fusing      |
| FK277 <sup>7</sup>  | FK277 - Single Fusing      |
| FK347 <sup>7</sup>  | FK347 - Single Fusing      |
| DFK208 <sup>7</sup> | DFK - Double Fusing        |
| DFK240 <sup>7</sup> | DFK - Double Fusing (240V) |
| DFK480 <sup>7</sup> | DFK - Double Fusing (480V) |

MOUNTING ACCESSORY ORDERING INFORMATION<sup>6</sup>

| Part Number <sup>8</sup> | Description  |
|--------------------------|--|
| 809374CLR                | XWM Wet Location Surface Conduit/Wiring Box              |
| 751632                   | 10' Linear Bird Spike Kit (2' Recommended per Luminaire) |



1 Custom lumen and wattage packages available consult factory. Values are within industry standard tolerances but not DLC listed.

2 Only available in 6L Lumen Package. Consult factory for lead time and availability.

3 IMSBT and ALBMRxLR control options are not available in 3L or 4L lumen packages when high voltage (HV) is specified.

4 IMSBTxL is field configurable via the Leviton app that can be downloaded from your smartphone's app store.

5 Not available in HV.

6 Accessories are shipped separately and field installed.

7 Fusing must be located in a hand hole for pole or in the junction box.

8 "CLR" to be replaced by paint finish selection. See Finish options for paint color selections.

Mirada Medium Wall Sconce (XWM) Outdoor Wall Sconce

Type : \_\_\_\_\_

 Have questions? Call us at (800) 436-7800

PERFORMANCE

| Delivered Lumens <sup>1</sup> |              |     |                  |          |            |                  |          |            |                  |          |            |         |
|-------------------------------|--------------|-----|------------------|----------|------------|------------------|----------|------------|------------------|----------|------------|---------|
| Lumen Package                 | Distribution | CRI | 3000K            |          |            | 4000K            |          |            | 5000K            |          |            | Wattage |
|                               |              |     | Delivered Lumens | Efficacy | BUG Rating | Delivered Lumens | Efficacy | BUG Rating | Delivered Lumens | Efficacy | BUG Rating |         |
| 3L                            | 2            | 70  | 3,178            | 138      | B1-U0-G1   | 3,368            | 146      | B1-U0-G1   | 9,853            | 159      | B1-U0-G1   | 23      |
|                               | 3            |     | 3,224            | 140      | B1-U0-G1   | 3,416            | 148      | B1-U0-G1   | 3,361            | 145      | B1-U0-G1   |         |
|                               | 4            |     | 3,210            | 140      | B1-U0-G2   | 3,364            | 146      | B1-U0-G2   | 3,294            | 143      | B1-U0-G2   |         |
|                               | FT           |     | 3,160            | 137      | B1-U0-G1   | 3,349            | 145      | B1-U0-G1   | 3,294            | 143      | B1-U0-G1   |         |
| 4L                            | 2            | 70  | 4,230            | 139      | B1-U0-G1   | 4,483            | 147      | B1-U0-G1   | 4,410            | 145      | B1-U0-G1   | 30      |
|                               | 3            |     | 4,291            | 141      | B1-U0-G1   | 4,547            | 150      | B1-U0-G1   | 4,473            | 147      | B1-U0-G1   |         |
|                               | 4            |     | 4,234            | 141      | B1-U0-G2   | 4,437            | 148      | B1-U0-G2   | 4,344            | 145      | B1-U0-G2   |         |
|                               | FT           |     | 4,206            | 138      | B1-U0-G1   | 4,458            | 147      | B1-U0-G1   | 4,385            | 144      | B1-U0-G1   |         |
| 6L                            | 2            | 70  | 6,326            | 134      | B2-U0-G1   | 6,704            | 142      | B2-U0-G2   | 6,595            | 140      | B2-U0-G2   | 47      |
|                               | 3            |     | 6,417            | 136      | B1-U0-G2   | 6,800            | 144      | B2-U0-G2   | 6,689            | 142      | B2-U0-G2   |         |
|                               | 4            |     | 6,336            | 135      | B1-U0-G3   | 6,640            | 141      | B1-U0-G3   | 6,500            | 138      | B1-U0-G3   |         |
|                               | FT           |     | 6,290            | 134      | B2-U0-G2   | 6,666            | 142      | B2-U0-G2   | 6,557            | 139      | B2-U0-G2   |         |
| 8L                            | 2            | 70  | 8,166            | 128      | B2-U0-G2   | 8,654            | 135      | B2-U0-G2   | 8,513            | 133      | B2-U0-G2   | 64      |
|                               | 3            |     | 8,283            | 129      | B2-U0-G2   | 8,778            | 137      | B2-U0-G2   | 8,635            | 134      | B2-U0-G2   |         |
|                               | 4            |     | 8,362            | 131      | B1-U0-G3   | 8,763            | 137      | B2-U0-G3   | 8,579            | 134      | B1-U0-G3   |         |
|                               | FT           |     | 8,120            | 126      | B2-U0-G2   | 8,605            | 134      | B2-U0-G2   | 8,465            | 132      | B2-U0-G2   |         |
| 12L                           | 2            | 70  | 11,492           | 149      | B2-U0-G2   | 12,033           | 156      | B3-U0-G2   | 11,927           | 155      | B3-U0-G2   | 77      |
|                               | 3            |     | 11,757           | 153      | B2-U0-G2   | 12,311           | 160      | B2-U0-G2   | 12,203           | 158      | B2-U0-G2   |         |
|                               | 4            |     | 11,486           | 149      | B2-U0-G3   | 12,058           | 157      | B2-U0-G3   | 11,716           | 152      | B2-U0-G3   |         |
|                               | FT           |     | 11,721           | 152      | B2-U0-G2   | 12,274           | 159      | B2-U0-G3   | 12,166           | 158      | B2-U0-G3   |         |
| 15L                           | 2            | 70  | 14,221           | 145      | B3-U0-G2   | 14,891           | 152      | B3-U0-G2   | 14,760           | 151      | B3-U0-G2   | 98      |
|                               | 3            |     | 14,549           | 148      | B2-U0-G2   | 15,235           | 155      | B2-U0-G2   | 15,101           | 154      | B2-U0-G2   |         |
|                               | 4            |     | 14,099           | 144      | B2-U0-G3   | 14,801           | 151      | B2-U0-G3   | 14,382           | 147      | B2-U0-G3   |         |
|                               | FT           |     | 14,505           | 148      | B2-U0-G3   | 15,189           | 155      | B2-U0-G3   | 15,055           | 154      | B2-U0-G3   |         |
| 18L                           | 2            | 70  | 16,894           | 138      | B3-U0-G3   | 17,690           | 145      | B3-U0-G3   | 17,534           | 144      | B3-U0-G3   | 122     |
|                               | 3            |     | 17,285           | 142      | B3-U0-G3   | 18,099           | 148      | B3-U0-G3   | 17,940           | 147      | B3-U0-G3   |         |
|                               | 4            |     | 16,951           | 139      | B2-U0-G3   | 17,795           | 146      | B3-U0-G3   | 17,291           | 142      | B3-U0-G3   |         |
|                               | FT           |     | 17,231           | 141      | B3-U0-G3   | 18,044           | 148      | B3-U0-G3   | 17,885           | 147      | B3-U0-G3   |         |
| 21L                           | 2            | 70  | 19,961           | 133      | B3-U0-G3   | 20,902           | 139      | B3-U0-G3   | 20,718           | 138      | B3-U0-G3   | 150     |
|                               | 3            |     | 20,422           | 136      | B3-U0-G3   | 21,385           | 143      | B3-U0-G3   | 21,197           | 141      | B3-U0-G3   |         |
|                               | 4            |     | 19,768           | 132      | B3-U0-G4   | 20,753           | 138      | B3-U0-G5   | 20,165           | 134      | B3-U0-G4   |         |
|                               | FT           |     | 20,360           | 136      | B3-U0-G3   | 21,320           | 142      | B3-U0-G3   | 21,132           | 141      | B3-U0-G3   |         |

| LUMEN SCALING FACTOR |                           |                           |
|----------------------|---------------------------|---------------------------|
| 70CRI - 80CRI        | 3000K 70CRI - 3500K 80CRI | 3000K 70CRI - 2700K 80CRI |
| 0.93                 | 1.00                      | 0.86                      |

| Electrical Data (Amps) - 2700K/3000K/3500K/4000K/5000K <sup>2</sup> |      |      |      |      |      |      |
|---|------|------|------|------|------|------|
| Lumen Package   | 120V | 208V | 240V | 277V | 347V | 480V |
| 3L  | 0.19 | 0.11 | 0.10 | 0.08 | 0.07 | 0.05 |
| 4L  | 0.25 | 0.14 | 0.13 | 0.11 | 0.09 | 0.06 |
| 6L  | 0.39 | 0.23 | 0.20 | 0.17 | 0.14 | 0.10 |
| 9L  | 0.53 | 0.31 | 0.27 | 0.23 | 0.18 | 0.13 |
| 12L   | 0.64 | 0.37 | 0.32 | 0.28 | 0.22 | 0.16 |
| 15L   | 0.82 | 0.47 | 0.41 | 0.35 | 0.28 | 0.20 |
| 18L   | 1.02 | 0.59 | 0.51 | 0.44 | 0.35 | 0.25 |
| 21L   | 1.25 | 0.72 | 0.63 | 0.54 | 0.43 | 0.31 |

| Recommended Lumen Maintenance - XWM <sup>3</sup> |                      |                       |                       |                       |                        |
|--|----------------------|-----------------------|-----------------------|-----------------------|------------------------|
| Ambient Temperature C°                           | Initial <sup>4</sup> | 25K hrs. <sup>4</sup> | 50K hrs. <sup>4</sup> | 75K hrs. <sup>5</sup> | 100K hrs. <sup>5</sup> |
| 35   | 99%                  | 97%                   | 95%                   | 93%                   | 91%                    |
| 50   | 100%                 | 98%                   | 95%                   | 93%                   | 90%                    |

- 1 LEDs are frequently updated therefore values are nominal
- 2 Electrical data at 25C (77F). Actual wattage may differ by +/-10%.
- 3 Lumen maintenance values at 25°C are calculated per TM-21 based on LM-80 data and in-situ luminaire testing.
- 4 In accordance with IESNA TM-21-11, Projected Values represent interpolated value based on time durations that are within six times (6X) the IESNA LM-80-08 total test duration (in hours) for the device under testing ((DUT) i.e. the packaged LED chip).
- 5 In accordance with IESNA TM-21-11, Calculated Values represent time durations that exceed six times NA LM-80-08 total test duration (in hours) for the device under testing ((DUT) i.e. the packaged LED chip).

| Delivered Lumens (Phosphor Converted Amber) |              |                  |          |            |         |
|---|--------------|------------------|----------|------------|---------|
| Lumen Package                               | Distribution | Amber            |          |            | Wattage |
|   |              | Delivered Lumens | Efficacy | BUG Rating |         |
| 6L  | 2            | 3,325            | 76       | B1-U0-G1   | 44      |
|   | 3            | 3,385            | 78       | B1-U0-G1   |         |
|   | 4            | 3,310            | 75       | B1-U0-G1   |         |
|   | FT           | 3,343            | 77       | B1-U0-G1   |         |

# Mirada Medium Wall Sconce (XWM) Outdoor Wall Sconce

Type : \_\_\_\_\_

 Have questions? Call us at (800) 436-7800

## PHOTOMETRICS

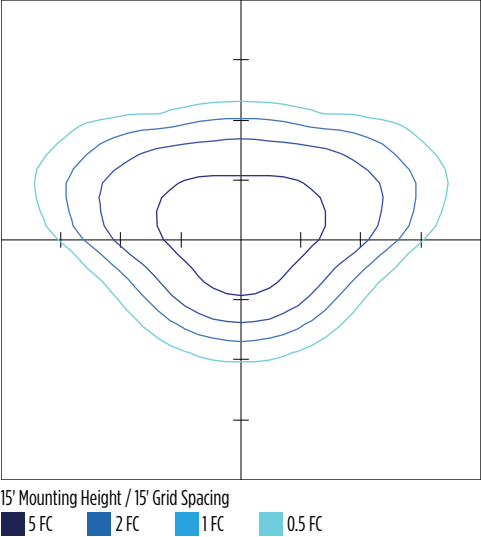
Luminaire photometry has been conducted by a NVLAP accredited testing laboratory in accordance with IESNA LM-79-08. As specified by IESNA LM-79-08 the entire luminaire is tested as the source resulting in a luminaire efficiency of 100%.  
See the individual product page on <https://www.lsicorp.com/> for detailed photometric data.

### XWM-2-LED-12L-40

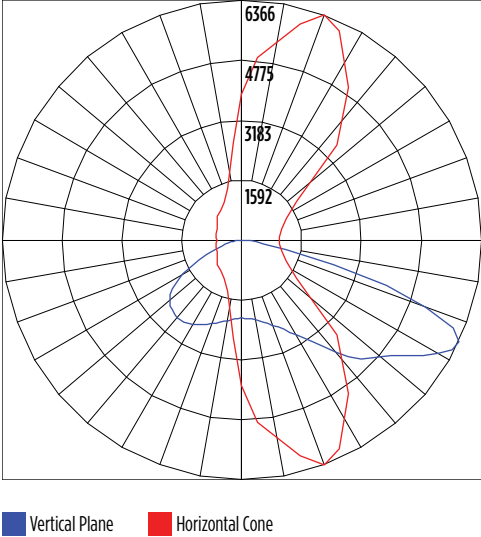
| Luminaire Data      |                     |  |
|---------------------|---------------------|--|
| Type 2 Distribution |                     |  |
| Description         | 4000 Kelvin, 70 CRI |  |
| Delivered Lumens    | 12,033              |  |
| Watts               | 77                  |  |
| Efficacy            | 156                 |  |
| IES Type            | Type II - Short     |  |
| BUG Rating          | B3-U0-G2            |  |

| Zonal Lumen Summary |        |             |
|---------------------|--------|-------------|
| Zone                | Lumens | % Luminaire |
| Low (0-30°)         | 1,961  | 16%         |
| Medium (30-60°)     | 6,874  | 57%         |
| High (60-80°)       | 3,014  | 25%         |
| Very High (80-90°)  | 184    | 2%          |
| Uplight (90-180°)   | 0      | 0%          |
| Total Flux          | 12,033 | 100%        |

ISO Footcandle



Polar Curve

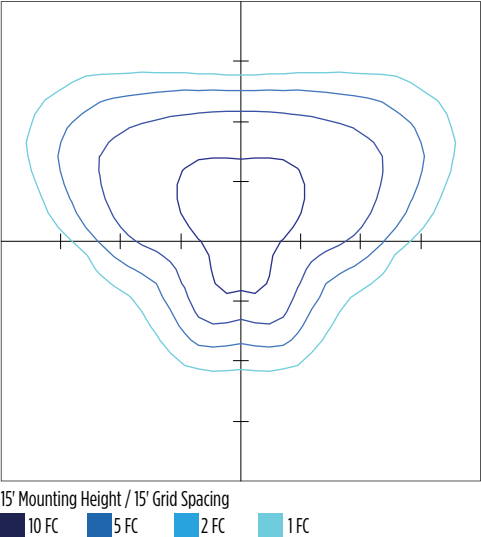


### XWM-3-LED-12L-40

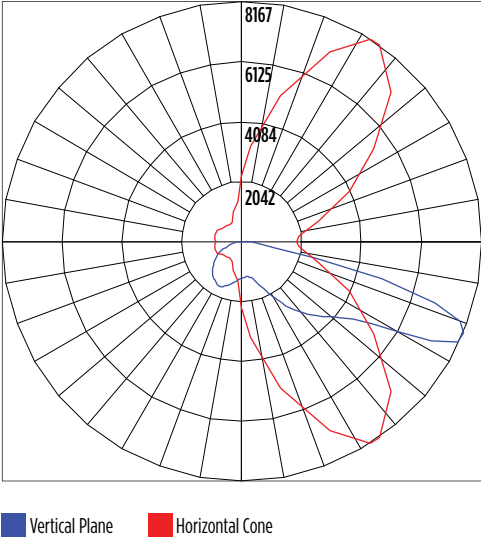
| Luminaire Data      |                     |  |
|---------------------|---------------------|--|
| Type 3 Distribution |                     |  |
| Description         | 4000 Kelvin, 70 CRI |  |
| Delivered Lumens    | 12,311              |  |
| Watts               | 77                  |  |
| Efficacy            | 160                 |  |
| IES Type            | Type III - Short    |  |
| BUG Rating          | B2-U0-G2            |  |

| Zonal Lumen Summary |        |             |
|---------------------|--------|-------------|
| Zone                | Lumens | % Luminaire |
| Low (0-30°)         | 1,340  | 11%         |
| Medium (30-60°)     | 6,164  | 50%         |
| High (60-80°)       | 4,549  | 37%         |
| Very High (80-90°)  | 258    | 2%          |
| Uplight (90-180°)   | 0      | 0%          |
| Total Flux          | 12,311 | 100%        |

ISO Footcandle



Polar Curve



Mirada Medium Wall Sconce (XWM) Outdoor Wall Sconce

Type : \_\_\_\_\_

 Have questions? Call us at (800) 436-7800

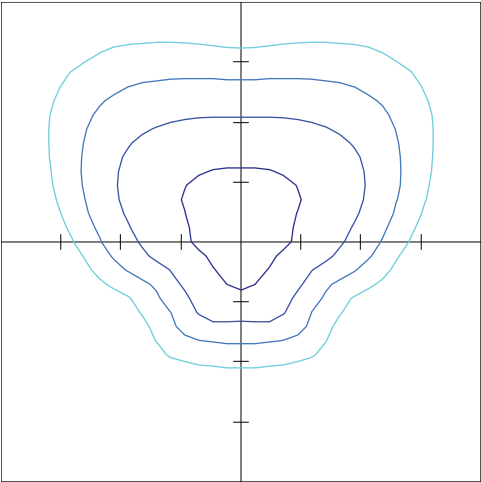
PHOTOMETRICS

XWM-FT-LED-12L-40

| Luminaire Data       |                     |
|----------------------|---------------------|
| Type FT Distribution |                     |
| Description          | 4000 Kelvin, 70 CRI |
| Delivered Lumens     | 12,274              |
| Watts                | 77                  |
| Efficacy             | 159                 |
| IES Type             | Type IV - Short     |
| BUG Rating           | B2-U0-G3            |

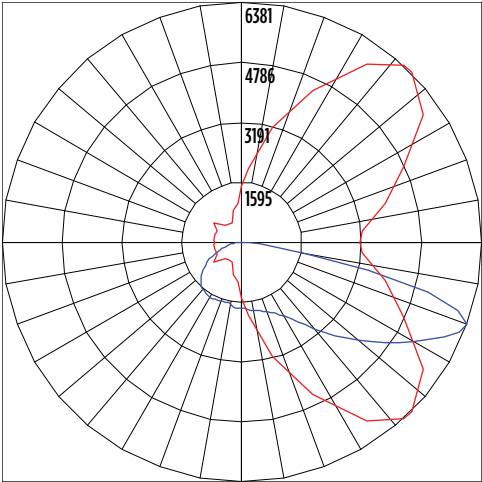
| Zonal Lumen Summary |        |             |
|---------------------|--------|-------------|
| Zone                | Lumens | % Luminaire |
| Low (0-30°)         | 1,578  | 13%         |
| Medium (30-60°)     | 5,798  | 47%         |
| High (60-80°)       | 4,576  | 37%         |
| Very High (80-90°)  | 322    | 3%          |
| Uplight (90-180°)   | 0      | 0%          |
| Total Flux          | 12,274 | 100%        |

ISO Footcandle



15' Mounting Height / 15' Grid Spacing  
5 FC 2 FC 1 FC 0.5 FC

Polar Curve



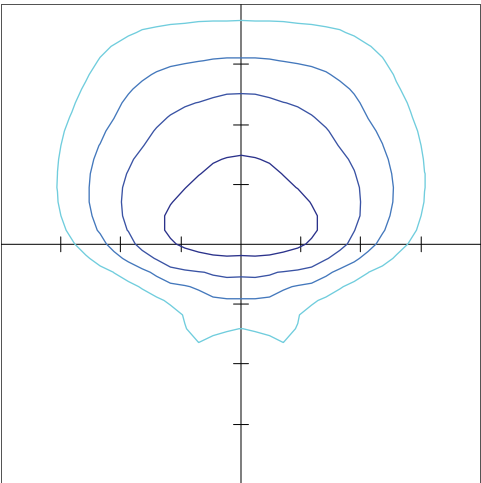
Vertical Plane Horizontal Cone

XWM-4-LED-12L-40

| Luminaire Data      |                      |
|---------------------|----------------------|
| Type 4 Distribution |                      |
| Description         | 4000 Kelvin, 70 CRI  |
| Delivered Lumens    | 12,058               |
| Watts               | 77                   |
| Efficacy            | 157                  |
| IES Type            | Type IV - Very Short |
| BUG Rating          | B2-U0-G3             |

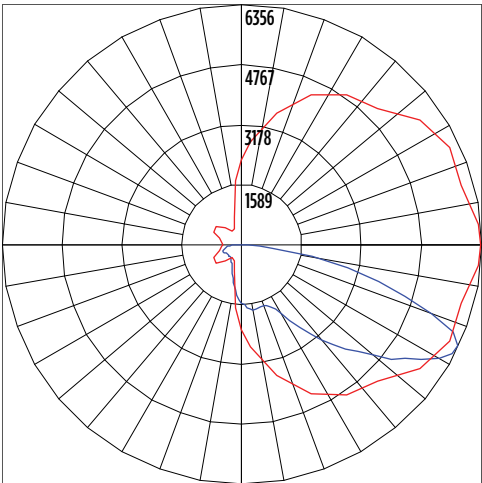
| Zonal Lumen Summary |        |             |
|---------------------|--------|-------------|
| Zone                | Lumens | % Luminaire |
| Low (0-30°)         | 1,345  | 11%         |
| Medium (30-60°)     | 5,394  | 45%         |
| High (60-80°)       | 4,855  | 40%         |
| Very High (80-90°)  | 464    | 4%          |
| Uplight (90-180°)   | 0      | 0%          |
| Total Flux          | 12,058 | 100%        |

ISO Footcandle



15' Mounting Height / 15' Grid Spacing  
5 FC 2 FC 1 FC 0.5 FC

Polar Curve



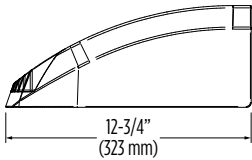
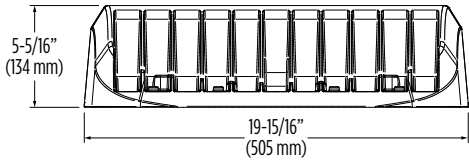
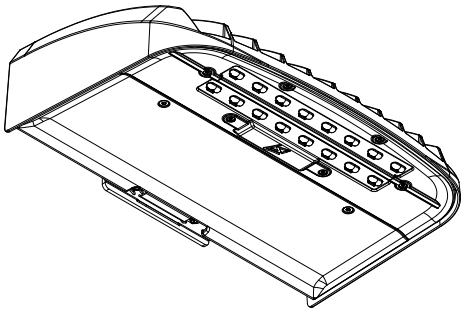
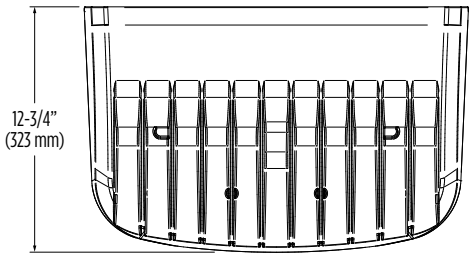
Vertical Plane Horizontal Cone

# Mirada Medium Wall Sconce (XWM) Outdoor Wall Sconce

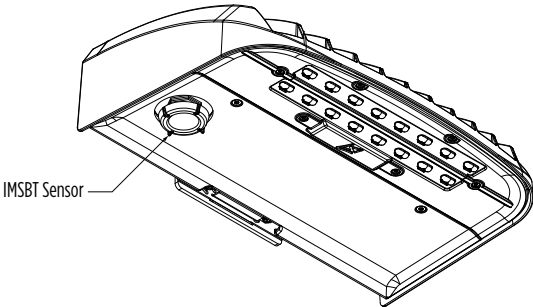
Type : \_\_\_\_\_

 Have questions? Call us at (800) 436-7800

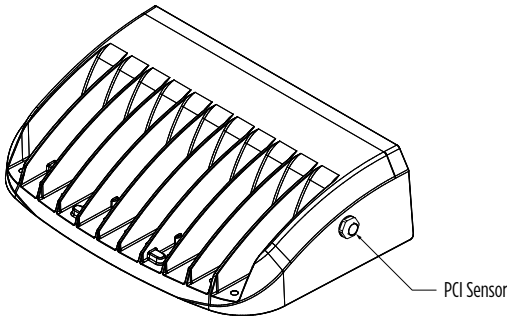
## PRODUCT DIMENSIONS



**Mirada Medium Wall Sconce with  
Integral Bluetooth™ Motion and Photocell Sensor**  
(XWM IMSBTxL)

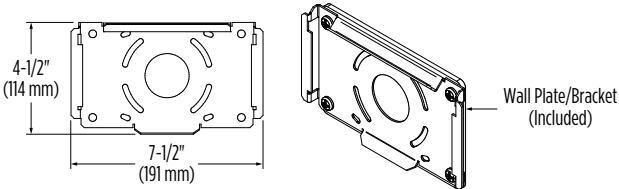


**Mirada Medium Wall Sconce with  
Button Type Photocell**  
(XWM PCI)

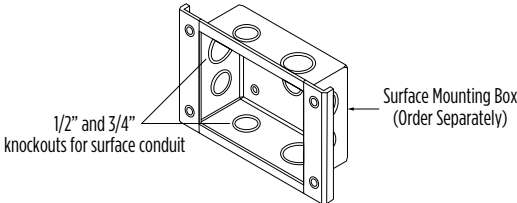


## Mounting Options

**Mounting Over Junction Box**  
(Standard/Included)



**XWM Wet Location Surface Conduit/Wiring Box**  
(809374CLR)





# Mirada Medium Wall Sconce (XWM) Outdoor Wall Sconce

Type : \_\_\_\_\_

 Have questions? Call us at (800) 436-7800

## CONTROLS

### Integral Bluetooth™ Motion and Photocell Sensor (IMSBTxL)

Slim low profile sensor provides multi-level control based on motion and/or daylight. Sensor controls 0-10 VDC LED drivers and is IP66 rated for cold and wet locations (-40°F to 167°F). Two unique PIR lenses are available and used based on fixture mounting height. All control parameters are adjustable via an iOS or Android App capable of storing and transmitting sensor profiles.

[Click here to learn more details about IMSBT](#)



LEVITON App



Apple



Android

### AirLink Wireless Lighting Controller (ALSC, ALSCS)

The AirLink integrated controller is a California Title 24 compliant lighting controller that provides real-time light monitoring and control with utility-grade power monitoring. It includes a 24V sensor input and power supply to connect a sensor into the outdoor AirLink wireless lighting system. The wireless integrated controller is compatible with this fixture.

[Click here to learn more details about AirLink](#)

### AirLink Blue (ALBMRxLR)

Wireless Bluetooth Mesh Lighting Control System that incorporates Luminaire Level Lighting Controls (LLLC) and high-end trim to provide energy savings code compliance and enhanced safety/security for parking lots and parking garages. Three key components; Bluetooth wireless radio/sensor controller, Time Keeper and an iOS App with technology partner Silvair. Capable of grouping multiple fixtures and sensors as well as scheduling time-based events by zone. Radio/Sensor Controller is factory integrated into Area/Site, Wall Mounted, Parking Garage and Canopy luminaires.

[Click here to learn more details about AirLink Blue](#)



AirLink Blue App



Apple

## Sensor Sequence of Operations

| Standard Programming | On Event | Off Event | On Light Level | Dim Light Level | Daylight Harvesting  | Delay To Off | Sensitivity |
|----------------------|----------|-----------|----------------|-----------------|----------------------|--------------|-------------|
| IMSBTxL              | Motion   | No Motion | 100%           | N/A             | On; Auto Calibration | 20 minutes   | High        |

| Operation       | Description  |
|-----------------|--|
| On Event        | Trigger that activates lights to turn on; either automatic via motion detected or manually activated via push of button.   |
| Off Event       | Trigger that activates lights to turn off; either automatic via no motion detected or manually activated via push of button.   |
| On Light Level  | The light level that the fixtures will turn on to when ON EVENT occurs.  |
| Dim Light Level | The light level that the fixtures will dim down to when no motion is detected.   |
| Delay to Dim    | The amount of time after which no motion is detected that the fixtures will be triggered to dim down. This sequence is optional, and sensor can be programmed to only trigger the fixture to turn off by entering 100% in this field.  |
| Delay to Off    | The amount of time after which no motion is detected that the fixtures will be triggered to turn off. If delay to dim is part of the programmed functionality, this is the amount of time after which no motion is detected after the fixture have already dimmed down.  |
| Sensitivity     | The sensitivity can be set to high, medium, low, or auto where applicable. High will detect smaller, simple motions. Low will only detect larger more complex motions. Auto temperature calibration adjusts the PIR sensitivity as ambient temperature rises to increase detection of heat movement through the field of view. |