

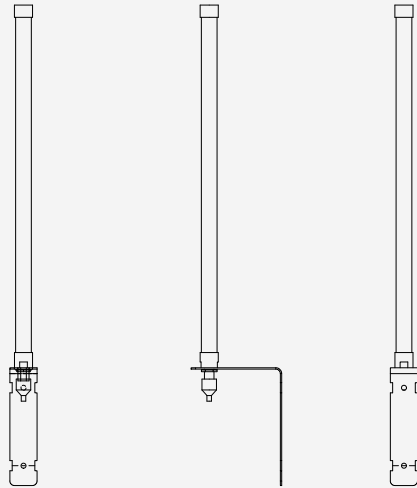
_____ Project name
 _____ Prepared by
 / / Date



AirLink™ Outdoor Antenna Kit
 enabled by Synapse®

Catalog #: **ALS ANT OUT**
 Part #: **732960**

When installing an AirLink Site Manager Controller, it is essential to consider how the RF signal will connect to other devices in the mesh network. The Outdoor Antenna Kit helps ensure that the site manager signal is amplified and propagated to other devices. This is important on large sites or sites with large physical obstructions between the site manager and other lighting control components.



- Applications** Auto dealerships Warehouses Shopping centers Parking facilities

Included in the kit:

- Remote site-controller antenna, outdoor, straight with built in mounting bracket
 - Pulse RO2048NM 8dBi Gain
 - Radome Omnidirectional CoLinear Antenna
 - UV Protection/IP-67 Protection
 - 85C/185F
 - Antenna Mast is 20"
 - Bracket is 6.5" H x 5" L x 1.5" W (165.1 x 127 x 38.1 mm)
- Structural Loading to withstand 150 mph winds
- VSWR of 2:1
- RP-SMA Female-to-Female Connector
- 50 Ohm Terminator
- Warranty: limited 1-year warranty

Certifications & Affiliations



Ordering Information

Part #	Catalog #	Description
732960	ALS ANT OUT	AirLink Synapse – Outdoor Antenna Kit

Contact LSI Controls

Sales
 controls.sales@lsi-industries.com

Support
 controls.support@lsi-industries.com
 1 (800) 436-7800 (support, option 8)

More information
 For more information on AirLink, visit our website at www.lsi-airlink.com/airlink