



Installation and Assembly Instructions TRI FS Series

WARNING

Risk of fire, electric shock, injury or property damage

Risk of electric shock—Disconnect power to equipment before installing or servicing.

This equipment must be installed according to all applicable codes & ordinances.

Installation and service of this equipment must be performed by qualified service personnel.

Do not install damaged equipment.

Read these instructions before installing, servicing or maintaining this equipment.

Save these instructions for maintaining and servicing.

CAUTION

Failure to follow instructions or altering equipment could result in damage and void warranty.

Edges may cut—wear gloves while handling or servicing this equipment.

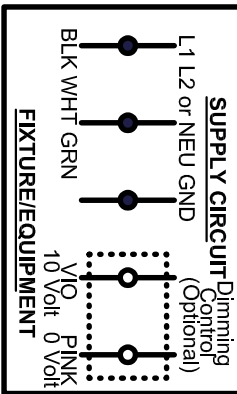
Inspect equipment for damage from shipping and handling.

LUMINAIRE PREPARATION

1. Remove the luminaire from the carton and inspect luminaire for damage. Do not install a damaged luminaire.

WIRING INFORMATION

FIELD WIRING CONNECTIONS



Installation Questions
Call LSI Field Service Dept.
800-436-7800 ext. 3300

SET FIXTURE OUTPUT

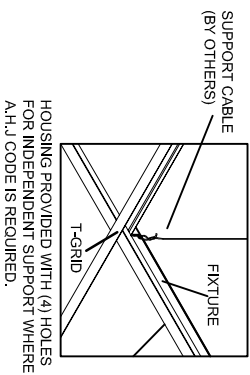
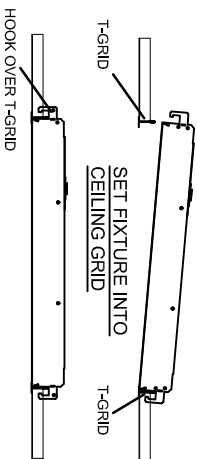
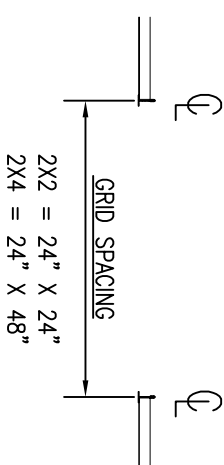
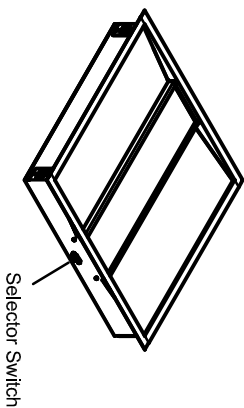
Set the selector switches, located at end of the housing under rubber cover, to desired CCT and wattage. Note: Factory default is 4000K (40K) and highest (H1) wattage.



LSI Industries Inc. 10000 Alliance Rd. Cincinnati, OH 45242 www.lsi-industries.com
Part No. 779251 Rev. 12/06/2021

Installation and Assembly Instructions TRI FS Series

Luminaire available in 2 sizes designed to fit 24x24in and 24x48in T-grid spacings.



Installation Questions
Call LSI Field Service Dept.
800-436-7800 ext. 3300

LSI Industries Inc. 10000 Alliance Rd. Cincinnati, OH 45242 www.lsi-industries.com
Part No. 779251 Rev. 12/06/2021