



Strip Lighting Position Guide

LED Industrial Linear Fixtures

END VIEW

AST



S



SDL



- Energy efficient, easy contractor-friendly lighting solutions
- High performing indoor fixtures for a variety of applications
- Comprehensive portfolio crafted to elevate aesthetic appeal, enhance functional visibility and foster productive workspaces

AST 2', 4', and 8'
UP TO 11,000L



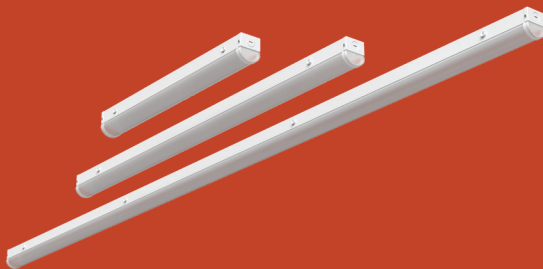
S 2', 4' and 8'
UP TO 18,000L



SDL 2', 4' and 8'
UP TO 18,000L



INDIVIDUAL OR CONTINUOUS



INDIVIDUAL OR CONTINUOUS



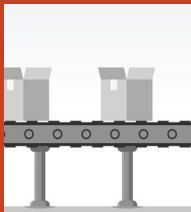
INDIVIDUAL OR CONTINUOUS



STORAGE



INDUSTRIAL AREA



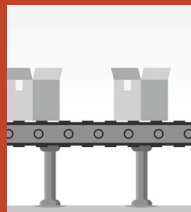
SHOP FLOOR



STORAGE



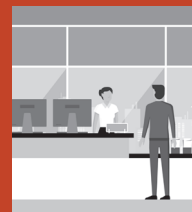
INDUSTRIAL AREA



SHOP FLOOR / AUTO SERVICE AREA



STORAGE / HOSPITALITY



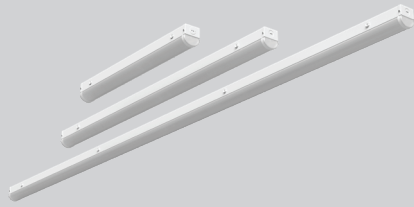
RETAIL / AUTO SERVICE AREA



SHOP FLOOR



Strip Lighting Position Guide



	Advantage Series Strip (AST) ★★★	Indoor Industrial LED Strip Light (S) ★★★★	Diffused Lens Strip (SDL) ★★★★★
Applications	Warehouse, Manufacturing, Service Bays, Retail, Utility and Storage Areas	Warehouse, Manufacturing, Service Bays, Retail, Utility and Storage Areas	Warehouse, Manufacturing, Service Bays, Retail, Utility and Storage Areas
Sizes Available	2', 4', and 8'	2', 4', and 8'	2', 4', and 8'
Luminaire Width	2-1/2"	4-3/8"	3-3/8"
Mounting Height	Up to 12'	Up to 20'	Up to 20'
Mounting	Surface, Cable (sold separately)	Surface, Chain/Cable/Pendant (sold separately)	Surface, Chain/Cable/Pendant (sold separately)
Delivered Lumens	1,300 - 11,000L (selectability range varies by unit)	1,500L - 18,000L	1,500L - 18,000L
CCT	3000K, 3500K, 4000K, 5000K (selectable)	3000K, 3500K, 4000K, 5000K	3000K, 3500K, 4000K, 5000K
Wattage	10 - 80	12 - 142	12 - 142
LPW	Up to 144 LPW	Up to 159 LPW	Up to 147 LPW
Temperature Rating	Up to 50C	Up to 50C	Up to 50C
Listings	Damp Location	Damp Location	Damp Location
DLC ¹	Premium	Premium	Premium
Lens	Diffuse Curved, Diffuse Square	No Lens	Diffuse Rounded
Voltage Range	120V - 347V	120V - 277V, 347V	120V - 277V, 347V
Battery Backup	Yes	Yes	Yes
Retrofit Kits ³	No	Yes	Yes
Controls/Sensors	Quick Control Sensors	External PIR Motion Sensor (OMSx) AirLink Blue Controller (ALBC) AirLink Blue Controller & Sensor (ALBCS)	External PIR Motion Sensor (OMSx) AirLink Blue Controller (ALBC) AirLink Blue Controller & Sensor (ALBCS)
Pricing	\$	\$\$	\$\$

¹ Not all versions of this product may be qualified. Please check the DLC Qualified Products List at www.designlights.org/OPL to confirm which versions are qualified.
² Not all versions of this product may be available with this lens type.