



TURTLE FRIENDLY LIGHTING

Protecting Coastal Habitats with Narrow Band Amber LED Lights

Artificial light can disrupt the natural nesting and emergence cues of sea turtles. Therefore, minimizing visible light along the beach is important to the survival of the species.

LSI LIGHTING OFFERS TURTLE FRIENDLY SOLUTIONS INCLUDING:

- Pedestrian scale fixtures for low mounting heights
- Long wavelength light (560nm or greater)
- Shielding and optical orientation options

LSI offers 15+ specialized fixtures designed to meet strict Turtle-Friendly Amber lighting guidelines. Whether you need wall mounts, bollards, ceiling fixtures, post tops, area lights, or decorative options, LSI delivers the right aesthetic for your application—while minimizing environmental impact.

Mirada Family



Slice



Opulence Series



Lifestyle





TURTLE FRIENDLY LIGHTING

Light Shields

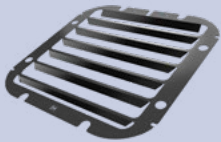
Blocking visibility of the light sources is a key aspect to minimize environmental impact along the beach, and in most cases shielding is required. LSI offers a wide range of standard and customized shielding solutions for blocking the light to not disrupt the sea turtle's habitat.

INTEGRAL SHIELDING

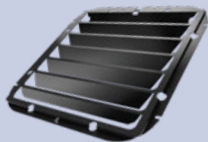
LSI's integral half (IH) and full (IL) louver shielding options can be installed in the factory or the field. They block visibility of the light source from behind the pole and cut down on high angle light which contributes to excess spill light and glare.

Applicable Products: MRS, MRM, MRL, SLM

With IH



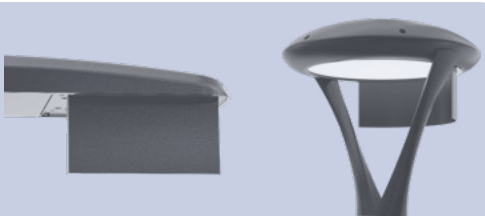
With IL



EXTERNAL SHIELDING

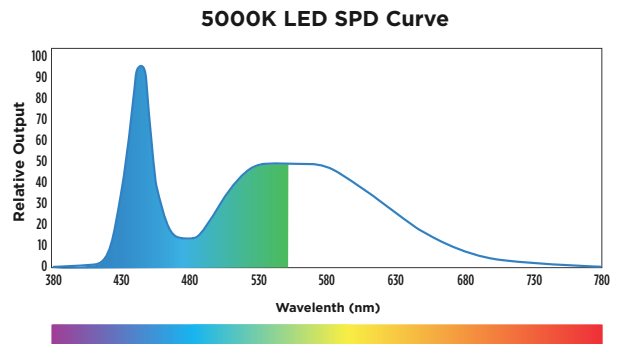
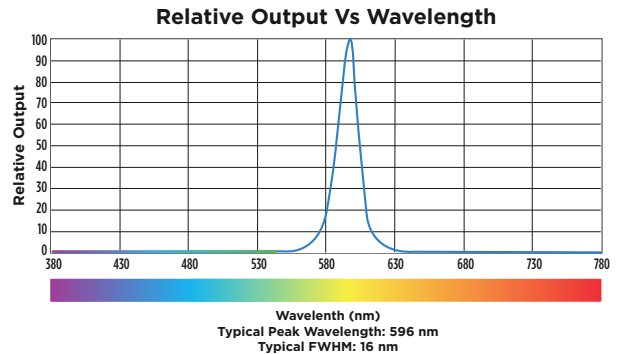
LSI's external shield options are field installable and help block visibility of light from any direction. These shields are available in varying lengths to meet the needs of nearly any beach front or wildlife application.

Applicable Products: MRS, MRM, MRL, SLM, OPS PT, OPS SA, OPS PD/SD, XDLS



560NM Narrow Band Wavelength

Our turtle-friendly amber LEDs limit short wavelength energy by producing more light above 560 nanometers (nm), which is the requirement for a long-wavelength light source.



Three golden rules of beach front lighting

• KEEP IT LOW

Fixtures must be mounted as low as possible and still be appropriate for the desired application.

The luminaire should also produce the lowest output necessary for the intended application.

• KEEP IT LONG

Lamp/Bulb must produce only long wavelength light (560 nm or greater, which is amber, orange, or red)

• KEEP IT SHIELDED

Fixture must be completely downward-directed.

Fixture must be able to shield the bulb, lamp, or glowing lens from the beach.

