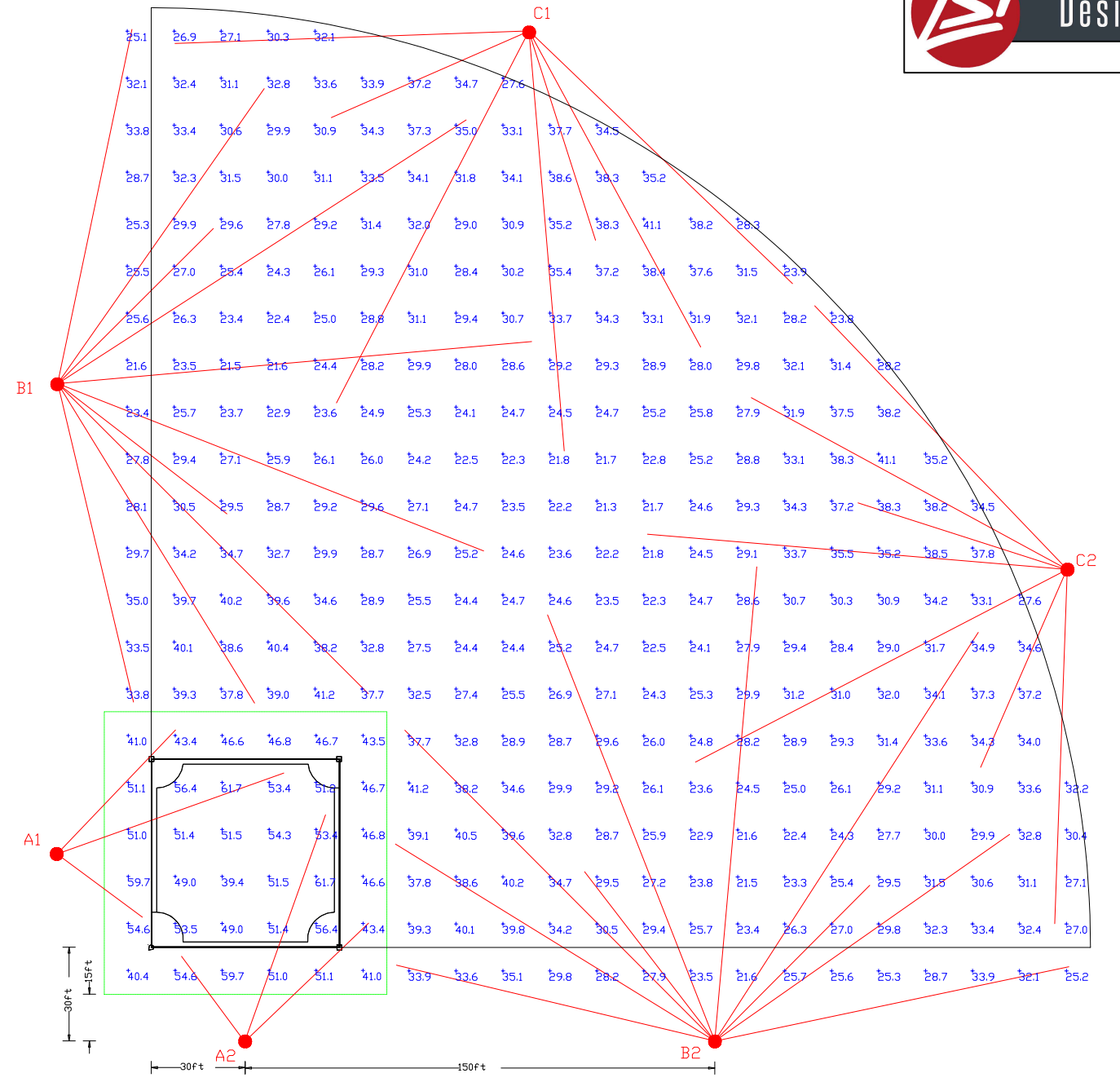


LSI Design Selector - Softball/Baseball



Softball/Baseball - 60' BASELINES
 300' HOME PLATE TO CENTER FIELD
 6 POLES
 Class 3: 50FC-INFIELD 30FC-OUTFIELD



POLE#	#POLES	Pole Height	Fixture	Qty/Pole	Total Fixtures	Watts/Fixture	Total Watts	Total KW
A1	1	50'	ZNF-110L-MF-50-GS	1	1	783	783	0.78
			ZNF-110L-MWF-50-GS	2	2	783	1,566	1.57
						3	2,349	2.35
A2	1	50'	ZNF-110L-MF-50-GS	1	1	783	783	0.78
			ZNF-110L-MWF-50-GS	2	2	783	1,566	1.57
						3	2,349	2.35
B1	1	70'	ZNF-110L-NF-50-GS	5	5	732	3,660	3.66
			ZNF-110L-MF-50-GS	3	3	783	2,349	2.35
			ZNF-110L-MWF-50-GS	2	2	783	1,566	1.57
						10	7,575	7.58
B2	1	70'	ZNF-110L-NF-50-GS	5	5	732	3,660	3.66
			ZNF-110L-MF-50-GS	3	3	783	2,349	2.35
			ZNF-110L-MWF-50-GS	2	2	783	1,566	1.57
						10	7,575	7.58
C1	1	60'	ZNF-110L-MF-50-GS	5	5	783	3,915	3.92
			ZNF-110L-MWF-50-GS	2	2	783	1,566	1.57
						7	5,481	5.48
C2	1	60'	ZNF-110L-MF-50-GS	5	5	783	3,915	3.92
			ZNF-110L-MWF-50-GS	2	2	783	1,566	1.57
						7	5,481	5.48
TOTALS				6	40		30,810	30.81

Final Aiming Diagram, Racking Diagram, and Calculations Furnished upon Receipt of a released order.
 ©2025 LSI Industries Inc.
 10800 Alliance Road • Cincinnati, OH 45242 USA • www.lsicorp.com
 (513) 793-3200

Label	CalcType	Units	Avg	Max	Min	Avg/Min	Max/Min	Grid Z
INFIELD	Illuminance	Fc	50	61.7	39.4	1.3	1.6	3
OUTFIELD	Illuminance	Fc	30	41.2	21.3	1.4	1.9	3

Symbol	Qty	Label	Arrangement	Description	LLF	Arr. Lum. Lumens	Arr. Watts
→	10	A33	SINGLE	ZNF-110L-NF-50-GS	0.930	99770	732
→	18	A44	SINGLE	ZNF-110L-MF-50-GS	0.930	107073	783
→	12	A55	SINGLE	ZNF-110L-MWF-50-GS	0.930	102030	783

Maintained Illumination Levels at 3' Above Grade.
 Final Aiming Diagram, Racking Diagram, and Calculations Furnished upon Receipt of a released order.

Dimensions of drawings that have been scaled or converted from PDF files or scanned /submitted images are approximate.

PHOTOMETRIC EVALUATION
 NOT FOR CONSTRUCTION

Based on the information provided, all dimensions and luminaire locations shown represent recommended positions. The engineer and/or architect must determine the applicability of the layout to existing or future field conditions.
 This lighting plan represents illumination levels calculated from laboratory data taken under controlled conditions in accordance with The Illuminating Engineering Society (IES) approved methods. Actual performance of any manufacturer's luminaires may vary due to changes in electrical voltage, tolerance in lamps/LED's and other variable field conditions. Calculations do not include obstructions such as buildings, curbs, landscaping, or any other architectural elements unless noted. Fixture nomenclature noted does not include mounting hardware or poles. This drawing is for photometric evaluation purposes only and should not be used as a construction document or as a final document for ordering product.
 The IES no longer uses the Cutoff Classification System for LED fixtures. The IES classifies LED fixtures with the BUG rating which refers to the Backlight-Uplight-Glare system. An Uplight of 'U0' most closely matches the old Full Cutoff rating.

Total Project Watts
 Total Watts = 30810

10800 ALLIANCE RD. CINCINNATI, OH 45242 USA
 (513) 793-3200 • FAX (513) 793-6003

LIGHTING PROPOSAL LO-163193
 SB_BB-60BL-300OF-6P-506070H-CL3_5030AVG

BY:IMK	DATE:	REV:	SHEET 1 OF 1
--------	-------	------	--------------

SCALE: 1"=50' ARCH B