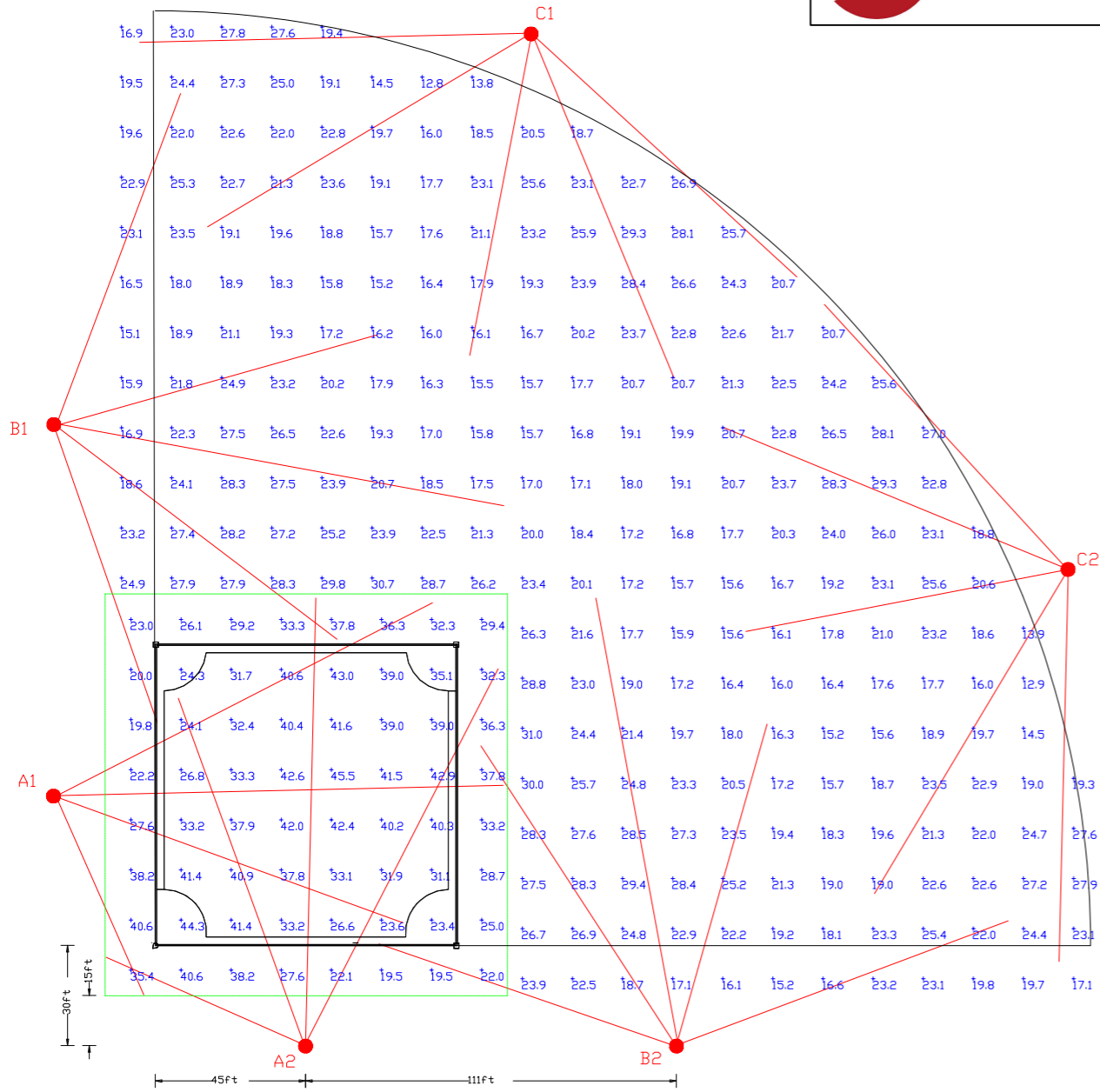


LSI Design Selector - Baseball



Baseball - 90' BASELINES
 280' HOME PLATE TO CENTER FIELD
 6 POLES
 Class 4: 30FC-INFIELD 20FC-OUTFIELD

POLE#	#POLES	Pole Height	Fixture	Qty/Pole	Total Fixtures	Watts/Fixture	Total Watts	Total KW
A1	1	60'	ZNF-110L-NF-50-GS	1	1	732	732	0.73
			ZNF-110L-MF-50-GS	1	1	783	783	0.78
			ZNF-110L-MWF-50-GS	2	2	783	1,566	1.57
						3,081	3.08	
A2	1	60'	ZNF-110L-NF-50-GS	1	1	732	732	0.73
			ZNF-110L-MF-50-GS	1	1	783	783	0.78
			ZNF-110L-MWF-50-GS	2	2	783	1,566	1.57
						3,081	3.08	
B1	1	60'	ZNF-110L-MF-50-GS	1	1	783	783	0.78
			ZNF-110L-MWF-50-GS	4	4	783	3,132	3.13
						3,915	3.92	
B2	1	60'	ZNF-110L-MF-50-GS	1	1	783	783	0.78
			ZNF-110L-MWF-50-GS	4	4	783	3,132	3.13
						3,915	3.92	
C1	1	50'	ZNF-110L-NF-50-GS	1	1	732	732	0.73
			ZNF-110L-MF-50-GS	3	3	783	2,349	2.35
			ZNF-110L-MWF-50-GS	1	1	783	783	0.78
						3,864	3.86	
C2	1	50'	ZNF-110L-NF-50-GS	1	1	732	732	0.73
			ZNF-110L-MF-50-GS	3	3	783	2,349	2.35
			ZNF-110L-MWF-50-GS	1	1	783	783	0.78
						3,864	3.86	
TOTALS		6			28		21,720	21.72

Final Aiming Diagram, Racking Diagram, and Calculations furnished upon receipt of a released order.
 © 2025 LSI Industries Inc.
 10000 Alliance Road • Cincinnati, OH 45242 USA • www.lsi.com
 (513) 793-3200

Label	CalcType	Units	Avg	Max	Min	Avg/Min	Max/Min	Grid Z
INFIELD	Illuminance	Fc	33	45.5	19.5	1.7	2.3	3
OUTFIELD	Illuminance	Fc	21	31.0	12.8	1.7	2.4	3

Symbol	Qty	Label	Arrangement	Description	LLF	Arr. Lum. Lumens	Arr. Watts
→	4	A33	SINGLE	ZNF-110L-NF-50-GS	0.930	99770	732
→	10	A44	SINGLE	ZNF-110L-MF-50-GS	0.930	107073	783
→	14	A55	SINGLE	ZNF-110L-MWF-50-GS	0.930	102030	783

Maintained Illumination Levels at 3' Above Grade.
 Final Aiming Diagram, Racking Diagram, and Calculations Furnished upon Receipt of a released order.

Dimensions of drawings that have been scaled or converted from PDF files or scanned /submitted images are approximate.

PHOTOMETRIC EVALUATION
 NOT FOR CONSTRUCTION

Based on the information provided, all dimensions and luminaire locations shown represent recommended positions. The engineer and/or architect must determine the applicability of the layout to existing or future field conditions.
 This lighting plan represents illumination levels calculated from laboratory data taken under controlled conditions in accordance with The Illuminating Engineering Society (IES) approved methods. Actual performance of any manufacturer's luminaires may vary due to changes in electrical voltage, tolerance in lamps/LED's and other variable field conditions. Calculations do not include obstructions such as buildings, curbs, landscaping, or any other architectural elements unless noted. Fixture nomenclature noted does not include mounting hardware or poles. This drawing is for photometric evaluation purposes only and should not be used as a construction document or as a final document for ordering product.
 The IES no longer uses the Cutoff Classification System for LED fixtures. The IES classifies LED fixtures with the BUG rating which refers to the Backlight-Uplight-Glare system. An Uplight of 'U0' most closely matches the old Full Cutoff rating.

Total Project Watts
 Total Watts = 21720

10000 ALLIANCE RD. CINCINNATI, OHIO 45242 USA
 (513) 793-3200 • FAX (513) 793-6282

LIGHTING PROPOSAL LO-163194

BB-90BL-280DF-6P-6050H-CL4_3020AVG

BY:THC	DATE:	REV:	SHEET 1 OF 1
--------	-------	------	-----------------

SCALE: 1"=50' ARCH B