

AirLink™ | Outdoor
Sports

Wireless Lighting Controls System

Easily manage your sports lighting with *AirLink* Outdoor, the easy to use, scalable lighting management solution that just works.

Our software is designed with core capabilities that help simplify managing outdoor sports lighting systems of all sizes. The AirLink Outdoor user interface makes it easy to make minor adjustments to individual lights, groups of lights, or the entire lighting system. The built-in scheduling features can be used to schedule the lights for practices, evening games, and special events. Scenes are the feature that allows multiple preset lighting configurations to be activated for special lighting needs. Quickly change between scenes for player introductions, the national anthem, or half time shows and then easily return to the action.

Powered by



SIMPLE USER INTERFACE

With **AirLink Outdoor**, users can access and control their lighting system from anywhere using a web browser on any computer or smart device.

The responsive design and intuitive user interface works great on laptops, tablets, or smart phones for quick access and real time updates to the system. Our intelligent lighting system scales easily to support small sites with a single sports lighting application or installations with several sports fields across multiple locations.

KEY APPLICATIONS

OUTDOOR APPLICATIONS



Municipal Sports Complexes



K-12 Sports Fields

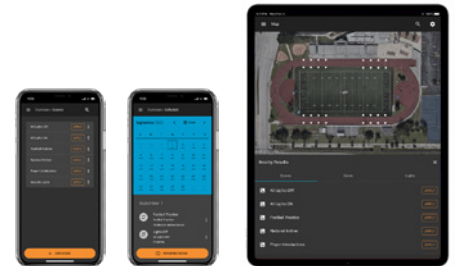


Collegiate Sports Fields

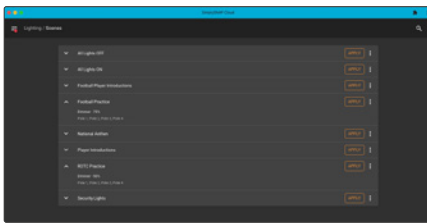
SOFTWARE FEATURES

User Interface

The map-based interface of AirLink Outdoor provides fast and easy access to your sports lighting needs from anywhere. Adjust lights, activate scenes, or create schedules all from a user interface that was designed to be easy to learn and easy to use.

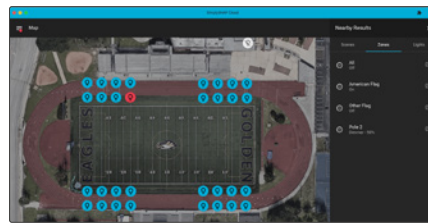


ZONES



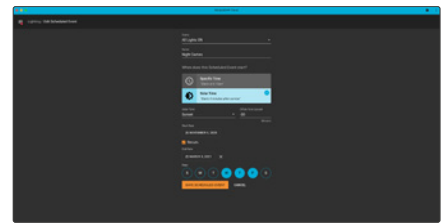
Lights can be organized and managed in easy-to-understand zones, supporting multiple sports fields or specific areas (End zone, Court 3, Softball Field 2, etc.).

SCENES



Create a behavior or a group of behaviors for one or more control zones for lighting. Once created these scenes can be manually applied with a single click or set to a schedule.

SCHEDULES

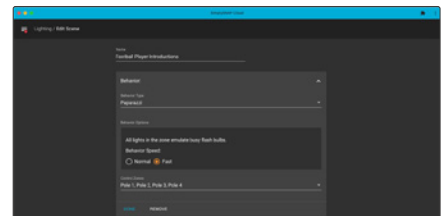


The built-in calendar feature allows scenes to be scheduled for one-time events or for recurring events out for several years. Create schedules for practices and games for the entire season to automate control.

DYNAMIC BEHAVIORS

The Dynamic Behaviors feature sends rapid dimming/on/off commands to groups of lights to create exciting light shows during sporting events. Create and save these as Scenes for events like scoring, player introductions, halftime shows and other special events.

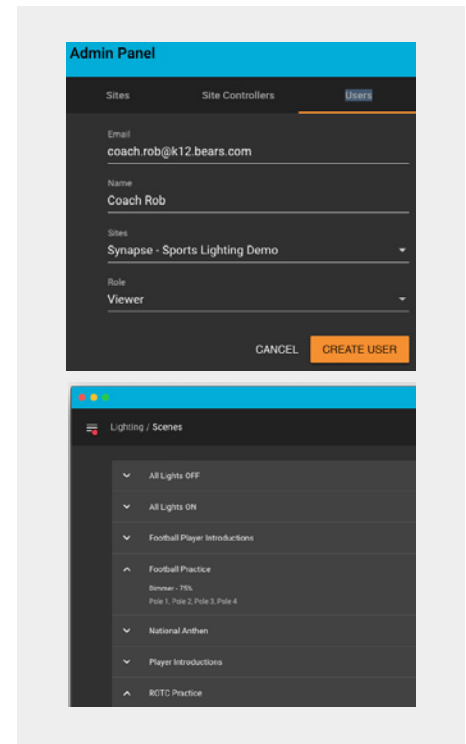
Note - Requires embedded controller, special drivers and Dynamic Behaviors software.



OTHER SOFTWARE FEATURES

Multi-site management: Single log-in and one interface to manage multiple locations.

- **Multiple lighting systems**
Easily manage parking lots, garages, and pathway lights in addition to the sports lighting system.
- **User Account Levels**
Different user account levels restrict access and control to the system to provide basic users with only the tools they need.
- **Alerts and alarms**
Notifications are sent immediately when issues are detected.
- **Push Button Control**
Program the Central Base Station buttons for direct control of light levels or to activate saved scenes and Dynamic Behaviors.
- **High-end Trim**
Reduce energy use by adjusting the maximum light levels across the system.
- **Sensor Support**
Use Occupancy and Photocell sensors to manage behaviors across groups of lights.
- **Task Tuning**
Granular control to adjust light levels in specific areas for specific task.



HARDWARE COMPONENTS

Central Base Station

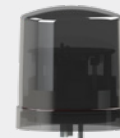
- The Central Base Station is the key component of every AirLink Outdoor lighting control solution. The Central Base Station coordinates communication out to all the AirLink Outdoor enabled devices that are part of the mesh network. They manage system configuration details, gather power and status information, apply zone behaviors, store scheduled events, generate notifications, and update controllers when new features or enhancements are added.
- Each Central Base Station also includes a 5-button switch that can be programmed and used to activate over 25 saved Scenes for fast direct control of different zones or the entire sporting complex.



Central Base Station
(ALS CBS WIFI VER CELL)



Embedded Light Controller and Dynamic Behaviors Driver
*(ALSDC) **(ALSDC DB)



Bolt-On and Twist-Lock Controllers
(ALSC UNV TL7, ALSC HV TL7)

Note - For ordering purposes, use catalog numbers for *Embedded Light Controller only, or for **Embedded Light controller with Dynamic Behaviors software.

CLOUD BASED LIGHTING SOFTWARE

Catalog #	Description
LM-BASE	12 month subscription to the Base Lighting Management Package
ALS DB-SOFTWARE	Dynamic Behaviors Software



Aerial view of a baseball field with stadium lights and a building. The field is in the center, surrounded by green grass and trees. A building with a red roof is visible on the right side. The text 'AirLink™ | Outdoor Sports' is overlaid on the field.

AirLink™ | Outdoor Sports

LSICorp.com/sports | (800) 436-7800



LSI Industries Inc. 10000 Alliance Rd. Cincinnati, OH 45242
©2022 LSI Industries Inc. All Rights Reserved.



MKVT.0530.A.0421