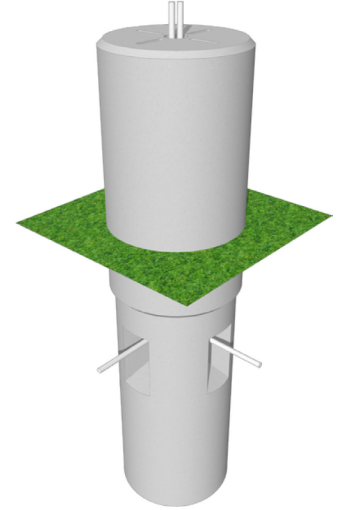




# Drop in Concrete Base

## Utilizing LPB™ Universal Light Pole Base Technology



### OVERVIEW

Concrete	Min 5,000 PSI
Bolt Circle	7.5" - 13.5"
Weight lbs	2,600 - 5,500

### QUICK LINKS

### FEATURES & SPECIFICATIONS

- **Customizable Bolt Circles:** Features a highly adaptable anchoring system utilizing LPB™ Universal Light Pole Base technology engineered to accommodate bolt circle diameters ranging from 7.5" to 13.5", eliminating field misalignment issues.
- **Conduit-Ready Infrastructure:** Built with multiple integrated conduit access slots to simplify and secure electrical wiring transitions.
- **High Quality:** Manufactured off-site under climate-controlled conditions to ensure superior material density, structural integrity, and a premium finish compared to traditional poured-in-place methods.
- **Dimensional Versatility:** Available in standard lengths of 6' or 8' with nominal diameters ranging from 24" to 30" to match specific load and soil requirements.
- **Flexible Above-Grade Exposure:** Designed to support exposed reveal heights from 12" to 36", seamlessly meeting standard site installation guidelines.
- **Install Ready Delivery:** Arrives fully cured, precision-aligned, and ready for immediate anchoring upon delivery.
- **Rapid Deployment Stocking Program:** Select popular configurations are stocked and available for immediate shipment to satisfy compressed project timelines and urgent field replacement needs.
- **Streamlined Project Timelines:** Drastically reduces on-site labor, material staging, and curing delays, allowing installation crews to finish and exit the site quickly.

### Construction

- Concrete: Min. 5000 psi @ 28 days.
- Rebar: ASTM A615 Grade 60.

### Anchor Bolts

- Carriage Bolts: ASTM F1554 Grade 55
- Anchor Plates: ASTM A514
- Bearing Plates: ASTM A36
- Nuts: ASTM A194 Grade 2H
- Washers: ASTM F436

### ORDERING GUIDE

#### TYPICAL ORDER EXAMPLE: DCB S 6 3/4

Prefix	Diameter	Length	Anchor Bolt
DCB	S - Standard 24" Base W - Wide 30" Base	6 - 6' 8 - 8'	3/4 - 3/4" 1 - 1"



**Need more information?**  
[Click here for our glossary](#)

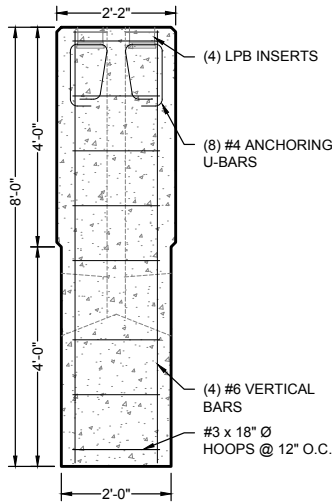
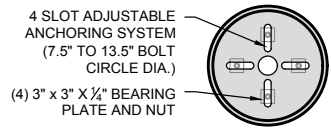
**Have additional questions?**  
Call us at (800) 436-7800



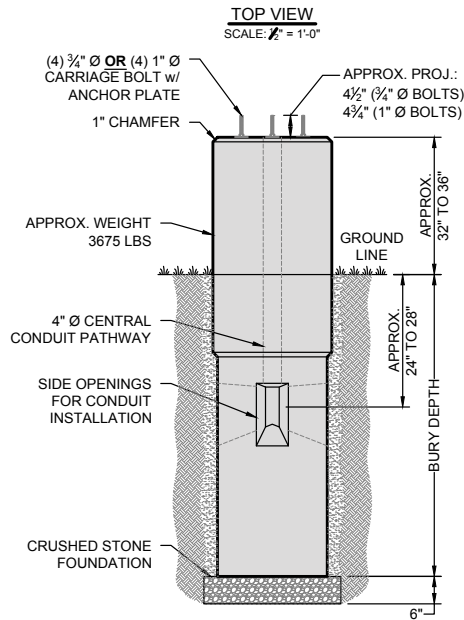
 Have questions? Call us at (800) 436-7800

## PRODUCT DIMENSIONS

### Standard 24" Drop in Concrete Base

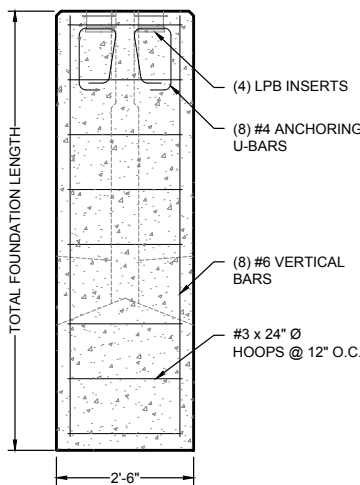
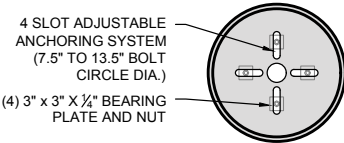


PRODUCT SECTION VIEW  
SCALE: 1/2" = 1'-0"

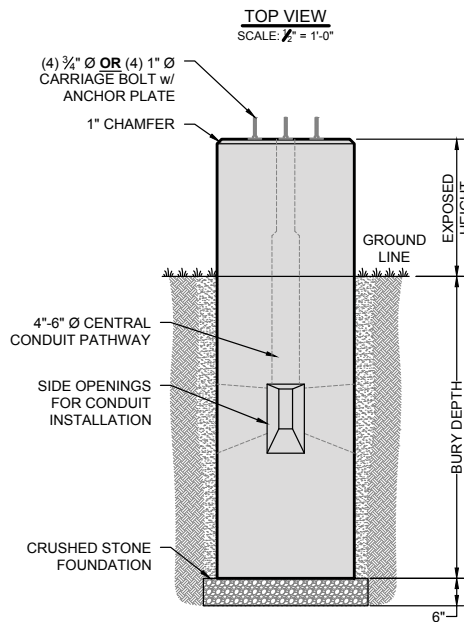


INSTALLED PRODUCT VIEW  
SCALE: 1/2" = 1'-0"

### Wide 30" Drop in Concrete Base



PRODUCT SECTION VIEW  
SCALE: 1/2" = 1'-0"



INSTALLED PRODUCT VIEW  
SCALE: 1/2" = 1'-0"

This product incorporates LPB™ Universal Light Pole Base technology manufactured by an authorized LPB licensed producer.

LPB technology is used pursuant to a license administered by Recon Wall Systems, Inc. (d/b/a The Precast Forte Group), 11521 Eagle Street NW, Suite 3, Coon Rapids, MN 55448.

Covered by U.S. Patent Nos. 8,991,122 and 9,624,640.

Structural performance of the LPB™ Universal Light Pole Base system is based upon the patented slotted anchoring system used in conjunction with validated engineering analysis, testing data, and established LPB Product Standards.

Published performance characteristics apply only when LPB bases are manufactured and installed in accordance with LPB Product Standards and installation requirements. Project-specific suitability must be verified by the project's licensed design professional.

Structural performance of the LPB™ Universal Light Pole Base system is based upon the patented slotted anchoring system used in conjunction with validated engineering analysis, testing data, and established LPB Product Standards.