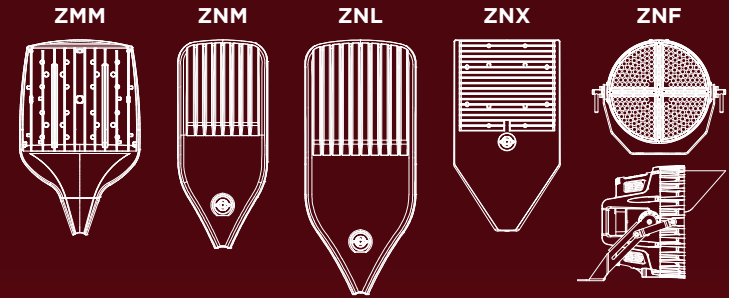





# Outdoor Sports Position Guide


Maximize your Game with the LSI name

- High performance lighting to elevate the areas where you play
- American made fixtures deliver premium low glare light
- Industry best optics and shielding options to enhance athlete's experience


**ZMM  
MODULAR COURT**  
(24,000 - 54,000)

COURT	TYPE 4 FORWARD
TYPE 2	CORNER
WIDE FLOOD	SQUARE NARROW



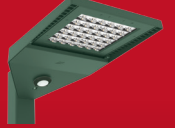
**ZNM  
MEDIUM COURT**  
(24,000 - 55,000)

COURT	TYPE 4
CORNER	FORWARD THROW




**ZNL  
LARGE COURT**  
(50,000 - 78,000)

COURT	FORWARD THROW
-------	---------------



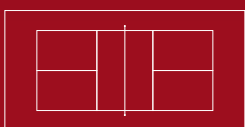
**ZNX  
MEDIUM X COURT**  
(30,000 - 55,000)

COURT	TYPE 4
CORNER	FORWARD THROW

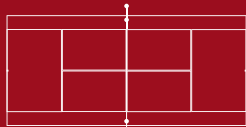


**ZNF  
SPORTS FLOOD**  
(75,000 - 110,000)

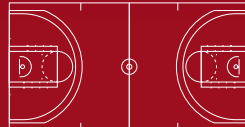
WIDE (6 X 6)	MEDIUM WIDE (5 X 5)
MEDIUM (4 X 4)	NARROW (3 X 3)
VERY NARROW (2 X 2)	



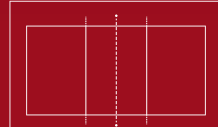
PICKLEBALL



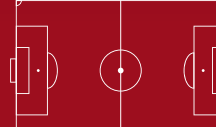
TENNIS



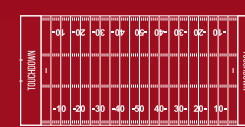
BASKETBALL



VOLLEYBALL



SOCCER



FOOTBALL

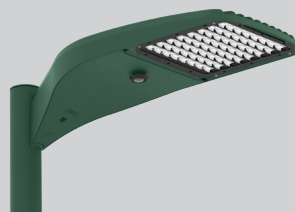


TRACK

SPORT COURT

FIELD LIGHTING

## Outdoor Sports Position Guide



	<b>Zone Modular Medium Court Light (ZMM)</b>	<b>Zone Medium Court Light (ZNM)</b>	<b>Zone Large Court Light (ZNL)</b>	<b>Zone Medium Court Light (ZNX)</b>	<b>Zone Sports Flood (ZNF)</b>
	★★★★★	★★★★★	★★★★★	★★★★★	★★★★
<b>Application</b>	Court Sports	Court Sports	Court Sports	Court Sports	Field Lighting, Court Sports
<b>Category of Play</b>	Category I, II, and III	Category II, and III	Category I, II, and III	Category II, and III	Category II, and III
<b>Size L x W x H (in)</b>	24 x 18 x 3	31 x 14 x 3	38 x 17 x 3.5	29 x 16 x 2	21 x 19 x 18
<b>Weight (lbs)</b>	30	30	60	27	51
<b>Mounting Height (ft)</b>	18 - 30	18 - 30	20 - 35	18 - 30	35 - 80
<b>Adjustable Slipfitter</b>	Standard w/ Slip Fitter Arm	Slip Fitter Accessory	Slip Fitter Accessory	Slip Fitter Accessory	Standard w/ Slip Fitter Arm
<b>Voltage (V)</b>	120-277V, 347-480V	120-277V, 347-480V	120-277V, 347-480V	120-277V, 347-480V	120-277V, 347-480V
<b>Operating Temperature C (F)</b>	-40 to 50 (-40 to 122)	-40 to 50 (-40 to 122)	-40 to 50 (-40 to 122)	-40 to 50 (-40 to 122)	-40 to 45 (-40 to 113)
<b>Lumen Package (lm)</b>	24,000 - 54,000	24,000 - 55,000	50,000 - 78,000	30,000 - 55,000	75,000 - 110,000
<b>Lumens Per Watt (LPW)</b>	105 - 175	122 - 150	114 - 146	112 - 151	137 - 170
<b>Wattage (W)</b>	141 - 352	176 - 401	375 - 648	232 - 437	433 - 783
<b>Lens/Optics</b>	Replaceable Acrylic Lens/Module	One Piece Silicone	One Piece Silicone	One Piece Silicone	Polycarbonate
<b>Distributions</b>	Type 2, 3W, 4F, WF, 5QN, CT, LC/RC	Type 4, FT, CT, LC/RC	Type FT, CT	Type 4, FT, CT, LC/RC	NEMA 2x2, 3x3, 4x4, 5x5, 6x6
<b>Shielding</b>	Integral Shield	Integral Shield	Integral Shield	Integral Shield	Half Visor, Louver
<b>Rotatable Optics</b>	Factory and Field Rotatable	Factory Rotatable Only	Factory Rotatable Only	Factory Rotatable Only	N/A
<b>CRI/CCT (K)</b>	80 CRI, 70 CRI 2700K, 3000K, 3500K, 4000K, 5000K	70 CRI 3000K, 4000K, 5000K	70 CRI 3000K, 4000K, 5000K	70 CRI 3000K, 4000K, 5000K	80 CRI, 70 CRI 4000K, 5000K
<b>Photocell</b>	Twistlock	Button or Twistlock	Twistlock	Button or Twistlock	Twistlock Only
<b>Sensor &amp; Wireless Controls</b>	IMSBT, AirLink Blue, AirLink Synapse	IMSBT, AirLink Blue, AirLink Synapse	IMSBT, AirLink Blue, AirLink Synapse	IMSBT, AirLink Blue, AirLink Synapse	IMSBT, AirLink Blue, AirLink Synapse
<b>7-Pin Receptacle</b>	Yes	Yes	Yes	Yes	Yes
<b>Surge Protection</b>	10kV Standard	10kV Standard	10kV Standard	10kV Standard	20kV Standard
<b>Remote Driver Capability</b>	No	No	No	No	Yes
<b>Listings</b>	IP66, DLC, BAA, BABAA	IP66, DLC, BAA, BABAA	IP66, DLC, BAA, BABAA	IP66, DLC, BAA, BABAA	IP66, DLC, BAA
<b>Paint Finishes</b>	LSI Standard + Custom Colors	LSI Standard + Custom Colors	LSI Standard + Custom Colors	LSI Standard + Custom Colors	Black Finish Only

\*Custom lumen and wattage packages available, consult factory

\*\*Not all versions of this product may be DLC qualified. Please check the DLC Qualified Products List at [www.designlights.org/QPL](http://www.designlights.org/QPL) to confirm which versions are qualified.

