



**COMMERCIAL
INDOOR**

**COMPARISON
GUIDE**

TABLE OF CONTENTS

OUR STORY

Commercial Lighting Experience 2

YOUR INDUSTRIAL FACILITY

Illustrated View of Products & Solutions 3

TROFFER PRODUCT COMPARISON

Direct, Direct-Indirect, & Indirect Illumination 5

LINEAR PRODUCT COMPARISON

Fixed Length to Continuous & Seamless Lighting 7

DOWNLIGHT PRODUCT COMPARISON

Retrofit, Remodel, & New Construction Solutions 9

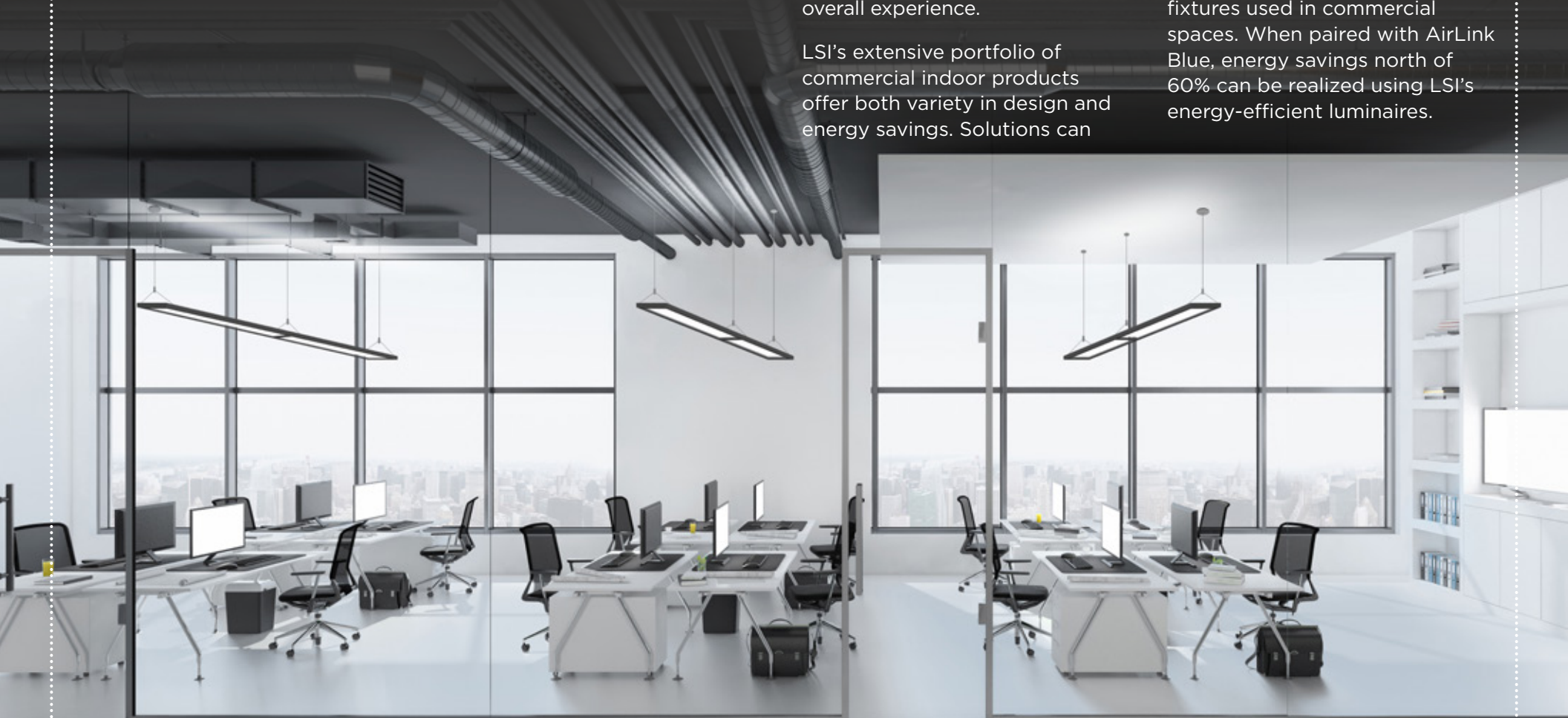
INTRODUCTION

Commercial buildings in the United States contain over 95 billion square feet of floor space currently and consume about 18% of all energy. Education, retail, office, and storage represent over 60% of this space.

High quality lighting is essential to maintain safety and productivity in commercial spaces. A well-lit space creates a welcoming ambiance that enhances the overall experience.

LSI's extensive portfolio of commercial indoor products offer both variety in design and energy savings. Solutions can

be tailored to meet high-end design goals or value engineered to meet tight budgets. Troffers, Linears and Downlights are some of the most common light fixtures used in commercial spaces. When paired with AirLink Blue, energy savings north of 60% can be realized using LSI's energy-efficient luminaires.



YOUR COMMERCIAL FACILITY



A TROFFER

Used primarily in modular drop ceiling configurations, troffers are ubiquitous in commercial indoor spaces. They can be surface or recess mounted into grid or drywall ceilings. With a wide range of designs to choose from, we have a troffer for any application and budget. Options like Controls or Emergency Battery provide additional savings and peace of mind.

B LINEAR

Linear lighting uplifts spaces with versatile and unique designs. It is therefore the go-to product for Specifiers and Designers. With a full range of linear fixtures from the Advantage to the R-series, we can support all your linear designs. All mounting options are covered including recessed, surface, wall or suspended.

C DOWNLIGHT

Ranging from multi-family dwellings to commercial spaces, downlights aka can lights come in a variety of forms, styles, and prices. Our range of downlights cover new construction, retrofit, and remodel projects. A variety of distributions, trims and finishes round out the family and present a robust overall offering.

LIGHTING BEYOND BOUNDARIES

LSI Industries presents a commercial indoor lighting portfolio that rises above the ordinary. Our luminaires are not just for corporate offices or automotive showrooms. Think upscale boutiques, bustling restaurants, and dynamic event spaces. We merge energy-saving brilliance with sleek aesthetics. Dive into our collection and uncover lighting solutions that not only adapt and transform but also sustain and beautify every environment. Regardless of its nature or magnitude.



Light for any demanding environment

No matter the environment, dependable lighting is essential. Experience the perfect blend of efficiency and elegance with LSI Industries.



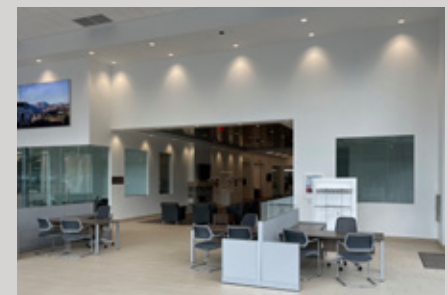
TROFFER



LINEAR



DOWNLIGHT

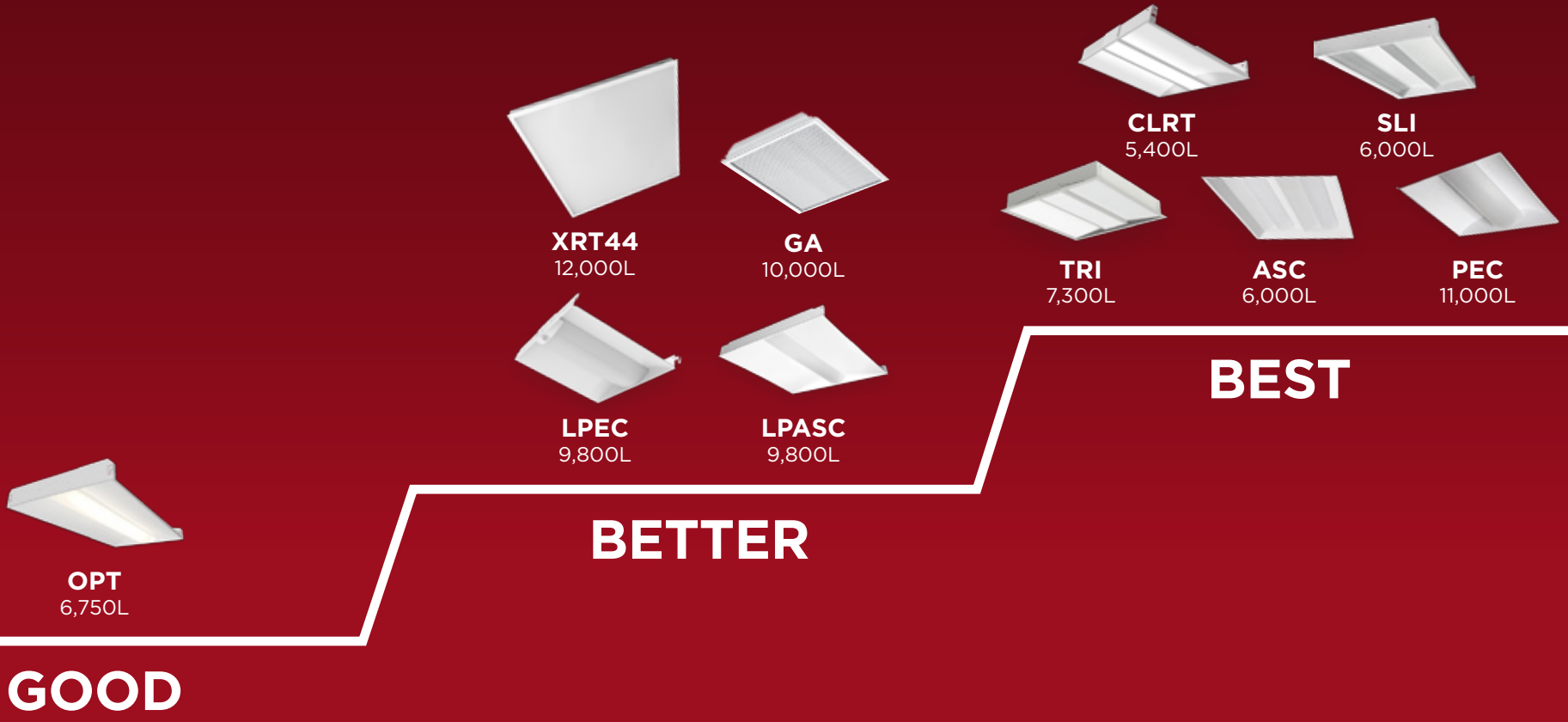
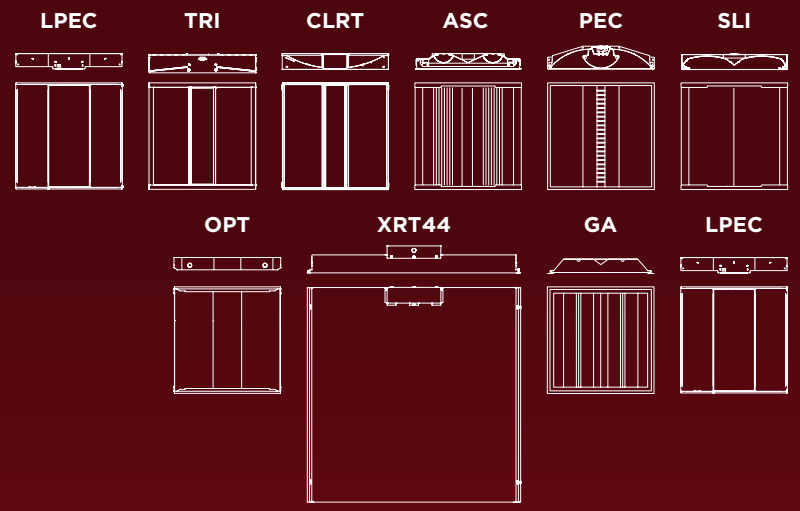




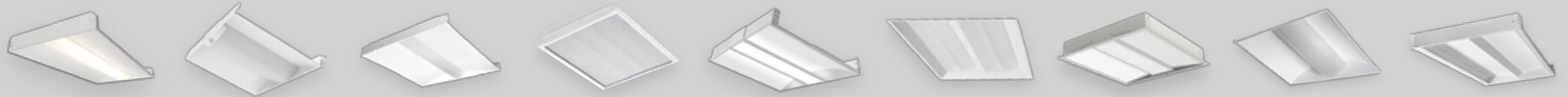
Troffer Position Guide

Direct & Indirect Troffer Fixtures for
EVERY Application

- Lots of designs to choose from. Direct, Direct-Indirect or Indirect illumination.
- Programmable outputs over 11,000 lumens.
- Field selectable general purpose or specification grade options.



Troffer Position Guide



	Basic Lensed Troffer (OPT) ★★★	Low Profile Wide-Lens Troffer (LPEC) ★★★	Low Profile Narrow-Lens Troffer (LPASC) ★★★★	High Efficiency Back-Lit Troffer (GA) ★★★★	Clarity Direct/Indirect Troffer (CLRT) ★★★★	Ascent Double Lensed Troffer (ASC) ★★★★	Triumph Troffer (TRI) ★★★★★	Peak Efficiency Direct/Indirect Troffer (PEC) ★★★★★	Side Light Recessed Indirect Troffer (SLI) ★★★★★
Design	Center Basket Direct	Wide Center Basket Direct	Narrow Center Basket Direct	Traditional Backlit Prismatic Lens	Floating Island Direct/Indirect	Double Basket	Angled Panels Independent Center Channel Direct	Deep Drawn Reflector Direct/Indirect	All Metal, Side-Lit Indirect
Form Factors (ft.)	1x4, 2x2, 2x4	1x4, 2x2, 2x4	1x4, 2x2, 2x4	1x4, 2x2, 2x4	2x2, 2x4	2x2, 2x4	2x2, 2x4	2x2, 2x4	2x2, 2x4
Field Selectable	Yes	No	No	No	Yes	No	Yes	No	No
Lumen Package (lm)	2,950 - 6,750	1,950 - 9,800	1,950 - 9,800	3,000 - 9,600	3,100 - 5,400	3,000 - 6,000	3,000 - 7,300	2,950 - 11,000	2,500 - 6,000
Max. Power (W)	48	69	69	88	48	40	55	86	59
CCT (K) & CRI	3500, 4000, 5000K, All in One, 80 min.	3000K, 3500K, 4000K, 5000K, 80 min.	3000K, 3500K, 4000K, 5000K, 80 min.	3000K, 3500K, 4000K, 5000K, 80 min.	3000K, 3500K, 4000K, All in One, 80 min.	3500K, 4000K, 5000K, 80 min.	3000K, 3500K, 4000K, 5000K, All in One, 80 min.	3500K, 4000K, 5000K, 80 min.	3000, 4000, 5000K, 80 min.
Unified Glare Rating (UGR)	23 - 27	23 - 30	23 - 30	20 - 23	24 - 28	22 - 30	20 - 25	26 - 29	26 - 29
Tunable White (TW)	No	Yes	Yes	No	No	No	No	No	Yes
Dimming Range (%)	10 - 100	1 - 100	1 - 100	1 - 100	10 - 100	1 - 100	10 - 100	1 - 100	1 - 100
Controls	0-10V, ALB	0-10V, IMS1, ALB, 3rd Party	0-10V, IMS1, ALB, 3rd Party	0-10V, IMS1, ALB, 3rd Party	0-10V, ALB	0-10V, ALB, 3rd Party	0-10V, IMS1, ALB, 3rd Party	0-10V, ALB, 3rd Party	0-10V, IMS1, ALB, 3rd Party
Options	EM	90 CRI, EM, 347V	90 CRI, EM, 347V	90 CRI, EM	EM	90 CRI, EM, 347V	EM, Custom Perf Designs	90 CRI, EM, Perf, 347V	90 CRI, EM, 347V
Accessories	Surface Mount, Flange Kit	Surface Mount, Flange Kit	Surface Mount, Flange Kit	Surface Mount, Flange Kit	Surface Mount, Flange Kit	Flange Kit	Flange Kit	Flange Kit	Surface Mount, Flange Kit
Pricing	\$	\$\$	\$\$	\$\$	\$\$\$	\$\$\$	\$\$\$	\$\$\$	\$\$\$

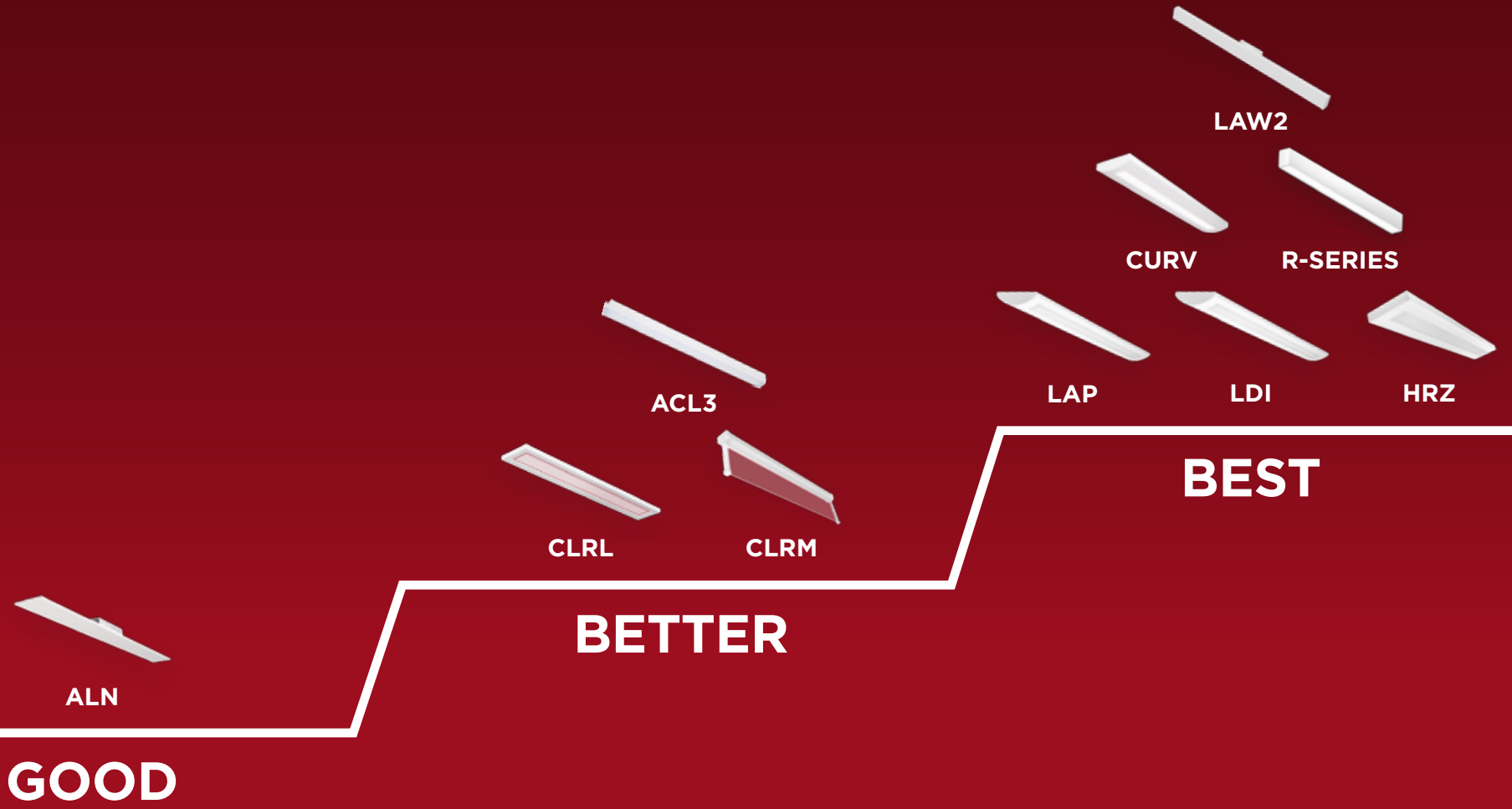
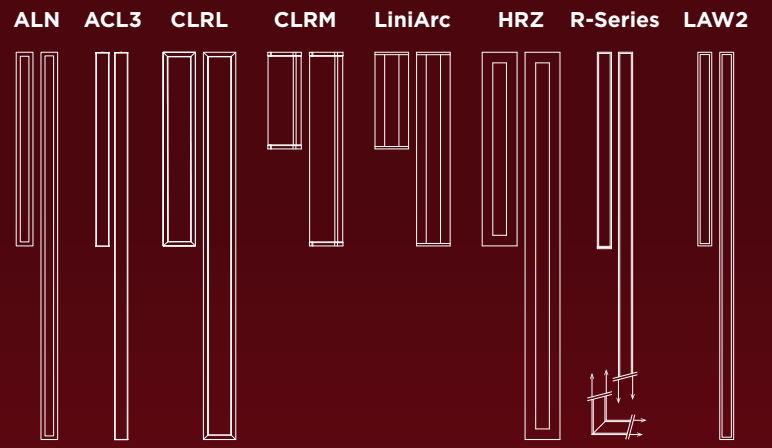
*Not all versions of each product may be qualified. Please check the DLC Qualified Products List at www.designlights.org/QPL to confirm which versions are qualified.
 **Longer lead times and/or minimum order quantities may apply for 90 CRI. Contact factory for details.
 ***3rd party controls may require further evaluation. Contact factory for details.



Linear Position Guide

Versatile & Affordable Linear Fixtures for EVERY Application

- Plug and Play with Clarity Up/Down CLRL
- Custom Engravings with Clarity Multi-Purpose CLRM
- Tackle the tightest budgets with Advantage Linear ALN



Linear Position Guide

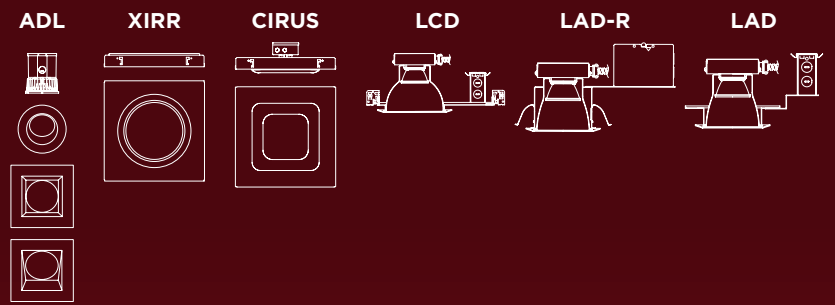
	Advantage Linear (ALN)	Advantage Continuous Linear (ACL3)	Clarity Direct/Indirect (CLRL)	Clarity Multi-Purpose (CLRM)	LiniArc Partial Perf (LAP)	LiniArc Direct/Indirect (LDI)	LiniArc Horizon (HRZ)	LiniArc Curv (CURV)	R-Series (RSS, RLS, RWM, RSM, RDI)	LiniArc Wet (LAW2)
	★★★	★★★★	★★★★	★★★★★	★★★★★	★★★★★	★★★★★	★★★★★	★★★★★	★★★★★
Application	Retrofit, New Construction	Retrofit, New Construction	Retrofit, New Construction	Retrofit, New Construction	Retrofit, New Construction	Retrofit, New Construction	Retrofit, New Construction	Retrofit, New Construction	New Construction	New Construction
Dry/Damp/Wet Location	Dry, Damp	Dry, Damp	Dry, Damp	Dry, Damp	Dry, Damp	Dry, Damp	Dry, Damp	Dry, Damp	Dry, Damp	Wet, IP66
Form Factors (ft.)	4, 8	2,3,4,5,6,8	4, 8	2, 4	4, 8	4, 8	4, 8	4, 8	2, 3, 4, 5, 6, 7, 8	1,2,3,4,5,6,7,8
Mounting	Recessed, Surface, Stem, Cable Suspended	Cable Suspended, Stem, Wall	Cable Suspended	Surface, Cable Suspended	Cable Suspended, Stem	Cable Suspended, Stem	Cable Suspended, Stem	Cable Suspended, Stem	Recessed, Surface, Stem, Wall, Cable Suspended	Recessed, Surface, Stem, Wall, Mullion, Cable Suspended
Field Selectable	No	No	Yes	Yes	No	No	No	No	No	No
Max. Lumen Package (lm/ft.)	1,000	2,600	1,250	1,000	1,750	1,200	1,200	1,400	2,600	3,000
Max. Power (W/ft.)	10	22	10	10	18	15	15	16	24	26
Voltage Input (V)	120-277	120-347	120-277	120-277	120-277	120-277	120-277	120-277	120-277	120-277
Dimming Range (%)	10 - 100	5 - 100	10 - 100	10 - 100	1 - 100	1 - 100	1 - 100	1 - 100	1 - 100	1-100
Continuous Run	No	Yes, Seamless	Yes, Visible Seam	No	Yes, Visible Seam	Yes, Visible Seam	Yes, Visible Seam	Yes, Visible Seam	Yes, Seamless	Yes, Visible Seam
Up/Down	No	Yes, Variable	Yes, Fixed	Yes, Fixed	No	Yes, Variable	Yes, Variable	Yes, Variable	Yes, Variable (RDI)	Yes, Variable
Lit Corners	No	Yes	No	No	No	No	No	No	Yes	No
Unlit corners	No	No	No	No	Yes	Yes	Yes	Yes	No	No
CCT (K) & CRI	3000K, 3500K, 4000K, 80 min.	3000K, 3500K, 4000K, 5000K, 90 min.	3000, 3500, 4000K, All in One, 80 min.	3000K, 3500K, 4000K, All in One, 90 min.	3000, 3500, 4000K, 80 min.	3000, 3500, 4000K, 80 min.	3000, 3500, 4000K, 80 min.	3000, 3500, 4000K, 80 min.	2700, 3000, 3500, 4000K, 5000K, 80 min.	2700, 3000, 3500, 4000K, 5000K, 80 min.
Controls	0-10V, ALB	0-10V, ALB, Standalone Sensor, 3rd Party	0-10V, ALB	0-10V, ALB	0-10V, ALB, Standalone Sensor, 3rd Party	0-10V, ALB, Standalone Sensor, 3rd Party	0-10V, ALB, Standalone Sensor, 3rd Party	0-10V, ALB, Standalone Sensor, 3rd Party	0-10V, ALB, Standalone Sensor, 3rd Party	0-10V, ALB, Standalone Sensor, 3rd Party
Finish	White, Black (with Surf. Mount Box)	White, Black, Custom	White, Black, Custom	White, Black, Custom	White, Black, Custom	White, Black, Custom	White, Black, Custom	White, Black, Custom	White, Black, Silver, Custom	White, Black, Silver, Graphite, Platinum, Grey, Green, Custom
Options	EM	EM, 2 Circuit	-	Custom Artwork	EM, 90 CRI	EM, 90 CRI, Louvers, 347V	EM, 90 CRI, Louvers, 347V	EM, 90 CRI, Baffle, 347V	EM, 90 CRI, 347V	Cold Weather Battery, EM, 90 CRI, 347V, Surge Protector
Accessories	Surface Mount Box, Cable kit, Flange Kit, Stem	Cable kit, Flange Kit, Stem, Wall Mount Bracket	Remote EM, Grid Mount Kit	Remote EM, Grid Mount Kit, Pendant Mount Kit	Feed Kits, Stem, Cable	Feed Kits, Stem, Cable	Feed Kits, Stem, Cable	Feed Kits, Stem, Cable	Feed Kits, End Plates, Stem, Cable, Mounting Hardware	Feed Kits, Beauty Plates, Stem, Cable, Mounting Hardware
Pricing	\$	\$\$	\$\$	\$\$	\$\$\$	\$\$\$	\$\$\$	\$\$\$	\$\$\$	\$\$\$

*Not all versions of each product may be qualified. Please check the DLC Qualified Products List at www.designlights.org/QPL to confirm which versions are qualified.
 **Longer lead times and/or minimum order quantities may apply for 90 CRI. Contact factory for details.
 ***3rd party controls may require further evaluation. Contact factory for details.

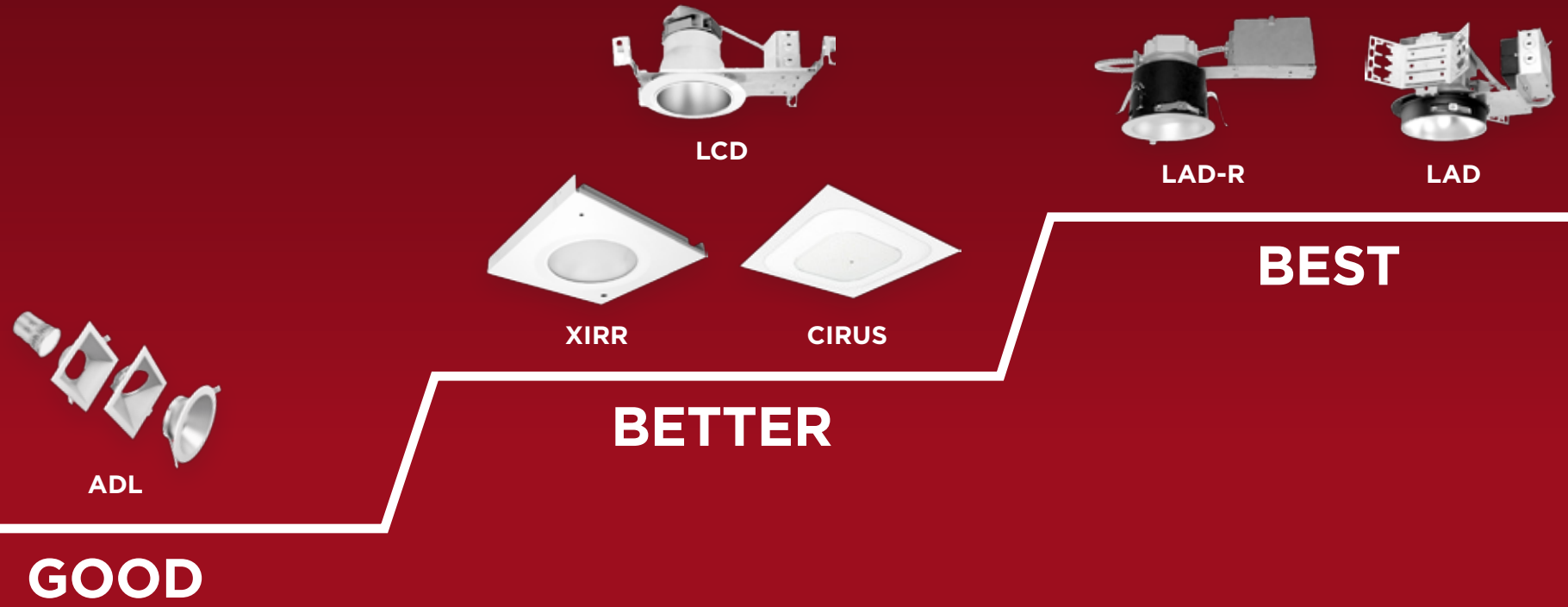


Downlight Position Guide

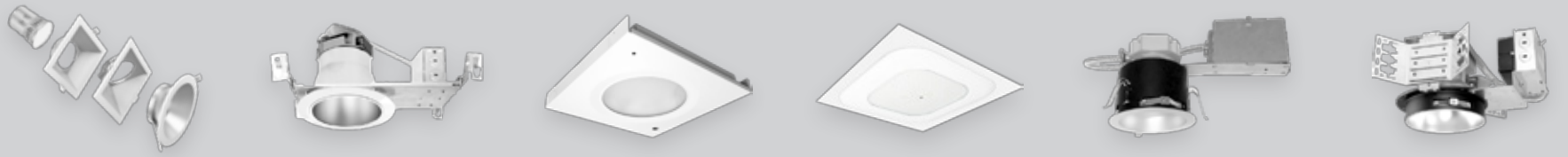
*Retrofit, Remodel, & New Construction
Downlight Fixtures for EVERY Application*



- Retrofit, Remodel or New Construction? We've got solutions for all of them including for high ceilings or wet location.
- Advantage down lights make installation a breeze.
- The LAD family offers a range of distributions to suit any application.
- CIRUS or XIRR ideally suited for higher mounting heights and lumen packages.



Downlight Position Guide



	Advantage Downlight (ADL) ★★★	Commercial New Construction Downlight (LCD) ★★★★	2x2 Round Recessed (XIRR) ★★★★	High Output Wet Location Ceiling Mount (CIRUS) ★★★★	Round Architectural Remodel Downlight (LAD-R) ★★★★★	Architectural New Construction Downlight (LAD) ★★★★★
Application	Remodel, New Construction	New Construction	Remodel, New Construction	Remodel, New Construction	Remodel	New Construction
Form Factors (in.)	4, 6, 8, 10	4, 6, 8	2X2	2X2	4, 6, 8	4, 6, 8
Shapes	Round, Square	Round	Round	Square	Round	Round, Square
Mounting	Spring Clips, Optional Flat Frame	Frame Kit	T-Grid, Drywall	T-Grid, Drywall	Retention Clips	Frame Kit
Max. Ceiling Thickness (in.)	1.5	0.5	N/A	N/A	0.625	1.5
Field Selectable	Yes	No	No	No	No	No
Lumen Package (lm)	750 - 3,900	1,150 - 4,300	12,000 - 19,000	9,000 - 14,000	1,150 - 4,300	1,150 - 4,300
Distribution	Wide, Wall Wash	Spot, Narrow, Flood, Wide Flood	Wide	Wide	Spot, Narrow, Flood, Wide Flood	Spot, Narrow, Flood, Wide Flood
Dimming Range (%)	10 - 100	1 - 100	1 - 100	1 - 100	1 - 100	1 - 100
Max. Power (W)	38	42	168	93	42	42
CCT & CRI	3000K, 3500K, 4000K, All in One, 80 min.	3000K, 3500K, 4000K, 80 min.	3500K, 4000K, 5000K 80 min.	3000K, 4000K, 5000K 80 min.	3000K, 3500K, 4000K, 80 min.	3000K, 3500K, 4000K, 80 min.
Controls	0-10V, ALB	0-10V, ALB	0-10V, ALB, Standalone Sensor, 3rd Party	0-10V, ALB	0-10V, ALB	0-10V, ALB
Damp/Wet Location Rating	Damp	Damp, Wet with Regressed Lens	Damp	Damp, Wet	Damp, Wet with Regressed Lens	Damp, Wet with Regressed Lens
Options	-	-	-	Diffused Lens	-	90 CRI, 347V
Accessories	Flat Frame Kit, Remote EM	White or Black Trim Ring, Remote EM	Remote EM, Flange Kit	Remote EM, Flange Kit	Remote EM	White or Black Trim Ring, Remote EM
Pricing	\$	\$\$	\$\$\$	\$\$\$	\$\$\$	\$\$\$

*Not all versions of this product may be qualified. Please check the DLC Qualified Products List at www.designlights.org/QPL to confirm which versions are qualified.
**Longer lead times and/or minimum order quantities may apply for 90 CRI. Contact factory for details.
***3rd party controls may require further evaluation. Contact factory for details.

Visit us online or contact your account manager for more information.

LSIcorp.com | (800) 436-7800

