



# Scottsdale® (CRUX)

## LED Canopy Luminaire



IP66



CRUX FT above canopy  
junction box



CRUX SC with REDiMount

OVERVIEW	
Lumen Package (lm)	5,000 - 22,000
Wattage Range (W)	39 - 157
Efficacy Range (LPW)	127 - 159
Weight lbs (kg)	23 (10.4)

### QUICK LINKS

## FEATURES & SPECIFICATIONS

### Construction

- Features a ultra-slim 15/16" profile die-cast housing, with flat clear or diffused tempered glass lens. Unit is water-resistant, sealed and IP66 rated. Integral designed heat sink does not trap dirt and grime, ensuring cool running performance over the life of the fixture.
- Standard color is white and is finished with LSI's DuraGrip® polyester powder coat process. DuraGrip withstands extreme weather changes without cracking or peeling.
- Luminaire assembly incorporates a pressure stabilizing vent breather to prevent seal fatigue and failure.

### Optical System

- Features an array of select, mid-power, high brightness, high efficiency LED; 3000K, 4000K, 5000K color temperature, 80 CRI (nominal).
- Choice of Symmetric or Forward Throw distributions.
- Symmetric distribution provides for general, even illumination under the fixture.
- Forward Throw distribution provides an industry leading unique distribution pattern that illuminates the area under the gas canopy and beyond. The forward through optic directs the light to the forecourt from the gas canopy eliminating the need for supplemental floodlights and extensive perimeter lighting.
- Standard diffuse lens for symmetric distribution to soften the brightness of the luminaire.
- Six Lumen Packages: 5,000, 9,000, 11,000, 13,000, and 19,000 and 22,000 Lumens.

### Electrical

- Industry leading thin profile optical assembly features first of its kind integrated driver design. The optical assembly unit houses both the LED array and the LED driver eliminating the need for an external driver and driver enclosure.
- High performance factory programmable driver features over-voltage, under voltage, short-circuit and over temperature protection with integral 10kV surge protection that meets IEEE C62.41.2 and ANSI C82.77-5 Location Category C Low standards. Additional field replaceable 10kV surge protection device meets a minimum Category C Low operation (per ANSI/IEEE C62.41.2). Custom lumen and wattage packages available.
- Universal voltage power supply, 120-277 VAC, 50/60 HZ.
- 40C to +55C (-40F to +131F) ambient operating temperature. (Varies based on lumen package and mounting style see performance data for specifics.)

### Controls

- Fixture dimming is accomplished via wired and wireless methods:
  - Wired - 0-10V analog low-voltage control that varies DC voltage
  - Wireless - Bluetooth Low Energy (BLE) Mesh

### Installation (Standard)

- One-person installation.
- Installs in a 12" or 16" deck pan. Deck penetration consists of a 4" hole, simplifying installation and water sealing. Unit is designed to quickly retrofit into existing

Scottsdale (4") hole as well as openings for Encore and Encore Top Access and to reconnect wiring for the SC/ECTA without having to relocate the conduit.

- Locking collar, stem kit, gasket and junction box are included and required for complete seal and support of canopy deck.
- Retro panels are available for existing Encores as well as kits for recessed and 2x2 installations (see separate spec sheets). Support brackets are provided standard, to prevent sagging of deck.

### Installation (REDiMount)

- REDiMount available. Patent pending 3 piece quick mounting system; components include collar, capsule and connector.
- Installs in 12" or 16" deck pan. Designed to reduce canopy penetrations and increase installation efficiency.

### Warranty

- LSI luminaires carry a 5-year limited warranty. Refer to <https://www.lsicorp.com/resources/terms-conditions-warranty/> for more information.

### Listings

- UL and ETL listed to UL 1598, UL 8750 and other U.S. and International safety standards. Suitable for wet locations.
- DesignLights Consortium® (DLC) Premium qualified product. Not all versions of this product may be DLC Premium qualified. Please check the DLC Qualified Products List at [www.designlights.org/QPL](http://www.designlights.org/QPL) to confirm which versions are qualified.
- Meets Buy American Act requirements.
- DarkSky approved with 3000K or lower color temperature and symmetric distribution.



# Scottsdale® (CRUSX) LED Canopy Luminaire

Type : \_\_\_\_\_

 **Have questions?** Call us at (800) 436-7800

## ORDERING GUIDE

TYPICAL ORDER EXAMPLE: CRUSX SCFT LED 22L 50 UE WHT ALBMR1									
Prefix	Distribution	Light Source	Driver	Color Temperature	Input Voltage	Finish	Options	Controls	Mounting
CRUSX - LED Canopy Luminaire	SC - Symmetric <i>DarkSky Approved</i>	LED	5L - 5,000 Lumens 9L - 9,000 Lumens 11L - 11,000 Lumens 13L - 13,000 Lumens 19L - 19,000 Lumens 22L - 22,000 Lumens  Custom Lumen Packages <sup>3</sup>	30 - 3000K <i>DarkSky Approved</i> 40 - 4000K 50 - 5000K	UE - Universal Voltage (120 - 277V)	WHT - White BRZ - Bronze BLK - Black	Standard - Clear Lens (CLR)  DFL - Diffuse Lens <sup>4</sup>	ALBMR1 - AirlinkBlue Multi Range Motion and Photo Sensor (8-15' mounting height, unobstructed max range 200')	Blank - None REDI - REDIMount Integrated Junction Box System
	SCFT <sup>1</sup> - Combination Standard Symmetric and Forward Throw		22L - 22,000 Lumens <sup>2</sup>						



**Need more information?**

[Click here for our glossary](#)

**Have additional questions?**

Call us at (800) 436-7800



## ACCESSORY ORDERING INFORMATION (Accessories are field installed)

Order Number	Description
525946	Retrofit Panels - EC / ECTA / SCF to CRUS, for 16" Deck Panel
530281	Retrofit Panels - ECTA / SCF to CRUS, for 12" Deck Panel
357282	Retrofit 2x2 Cover Panel Blank (no holes)

Order Number	Description
354702	Retrofit RIC Cover Panel Blank (no holes)
1320540	Kit - Hole Plugs and Silicone (enough for 25 retrofits)*

\*Consists of (25) 7/8" hole plugs, (100) 5/16" hole plugs and (1) tube of RTV

1 Not available on 5L.  
2 FT distribution option only available with VHO 22,000 lumen package.  
3 This footnote is not used.  
4 Not available with SCFT.

PERFORMANCE

Delivered Lumens									
Lumen Package	Distribution	CRI	3000K CCT		4000K CCT		5000K CCT		Wattage
			Delivered Lumens	Efficacy	Delivered Lumens	Efficacy	Delivered Lumens	Efficacy	
5L	SC	80	5834	150	6175	159	6171	159	39
9L	SC	80	9001	149	9527	158	9521	158	60
11L	SC	80	10461	147	11072	156	11065	156	71
13L	SC	80	12969	144	13727	152	13718	152	90
19L	SC	80	18224	141	19290	150	19277	150	129
22L	SC	80	21633	138	22883	145	22868	145	157
22L	DFL	80	19957	127	21124	134	21110	134	157
22L	SCFT	80	22224	142	23523	150	23508	150	157

\*LED Chips are frequently updated therefore values are nominal.

Electrical Data (AMPS)					
Lumen Package	Wattage	120V	208V	240V	277V
5L	39	0.32	0.19	0.16	0.14
9L	60	0.50	0.29	0.25	0.22
11L	71	0.59	0.34	0.30	0.26
13L	90	0.75	0.43	0.38	0.33
19L	129	1.07	0.62	0.54	0.47
22L	157	1.31	0.76	0.66	0.57

\*Electrical data at 25C (77F). Actual wattage may differ by +/-10%.

OPERATING TEMPERATURE		
Lumen Package	Mounting	Max
13L	Metal/Wood Canopy	55 C
19L	Metal/Wood Canopy	45 C
22L	Metal/Wood Canopy	45 C

Recommended Lumen Maintenance <sup>1</sup> CRUSX 13L					
Ambient Temperature °C	Initial <sup>2</sup>	25k hr <sup>2</sup>	50k hr <sup>2</sup>	75k hr <sup>3</sup>	100k hr <sup>3</sup>
0 C	100%	96%	91%	87%	82%
10 C	100%	96%	91%	87%	82%
20 C	100%	96%	91%	86%	82%
25 C	100%	96%	91%	86%	82%
30 C	100%	96%	91%	86%	82%
40 C	100%	96%	91%	86%	82%
45 C	100%	95%	90%	86%	82%
50 C	100%	95%	90%	86%	82%

Recommended Lumen Maintenance <sup>1</sup> CRUSX 22L					
Ambient Temperature °C	Initial <sup>2</sup>	25k hr <sup>2</sup>	50k hr <sup>2</sup>	75k hr <sup>3</sup>	100k hr <sup>3</sup>
0 C	100%	96%	91%	86%	82%
10 C	100%	96%	91%	86%	82%
20 C	100%	96%	91%	86%	82%
25 C	100%	96%	91%	86%	82%
30 C	100%	95%	90%	86%	82%
35 C	100%	95%	90%	86%	81%

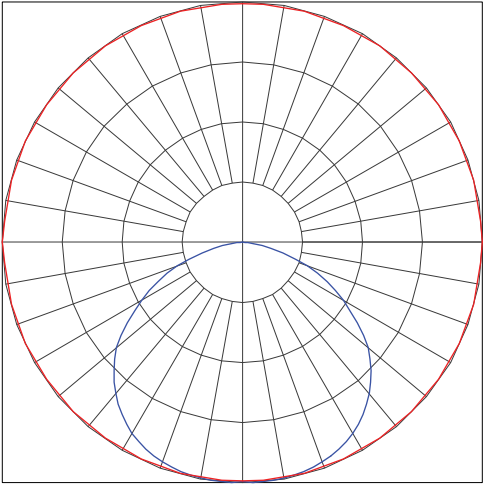
1 Lumen maintenance values at 25 °C are calculated per TM-21 based on LM-80 data and in-situ luminaire testing.  
2 In accordance with IESNA TM-21-11, Projected Values represent interpolated value based on time durations that are within six times (6X) the IESNA LM-80-08 total test duration (in hours) for the device under testing (DUT) i.e. the packaged LED).  
3 In accordance with IESNA TM-21-11, Calculated Values represent time durations that exceed six times NA LM-80-08 total test duration (in hours) for the device under testing (DUT) i.e. the packaged LED).

PHOTOMETRICS

Luminaire photometry has been conducted by a NVLAP accredited testing laboratory in accordance with IESNA LM-79-08. As specified by IESNA LM-79-08 the entire luminaire is tested as the source resulting in a luminaire efficiency of 100%.

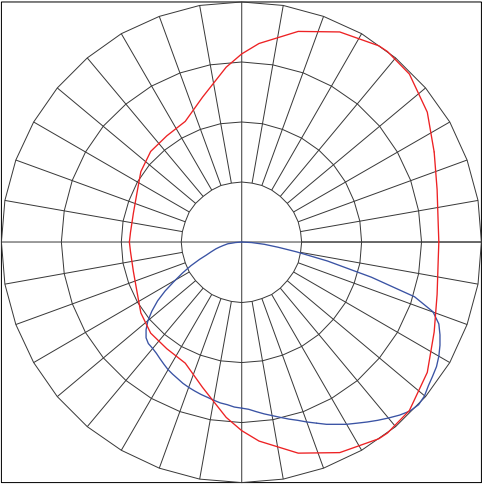
See the individual product page on <https://www.lsicorp.com/> for detailed photometric data.

Polar Curve



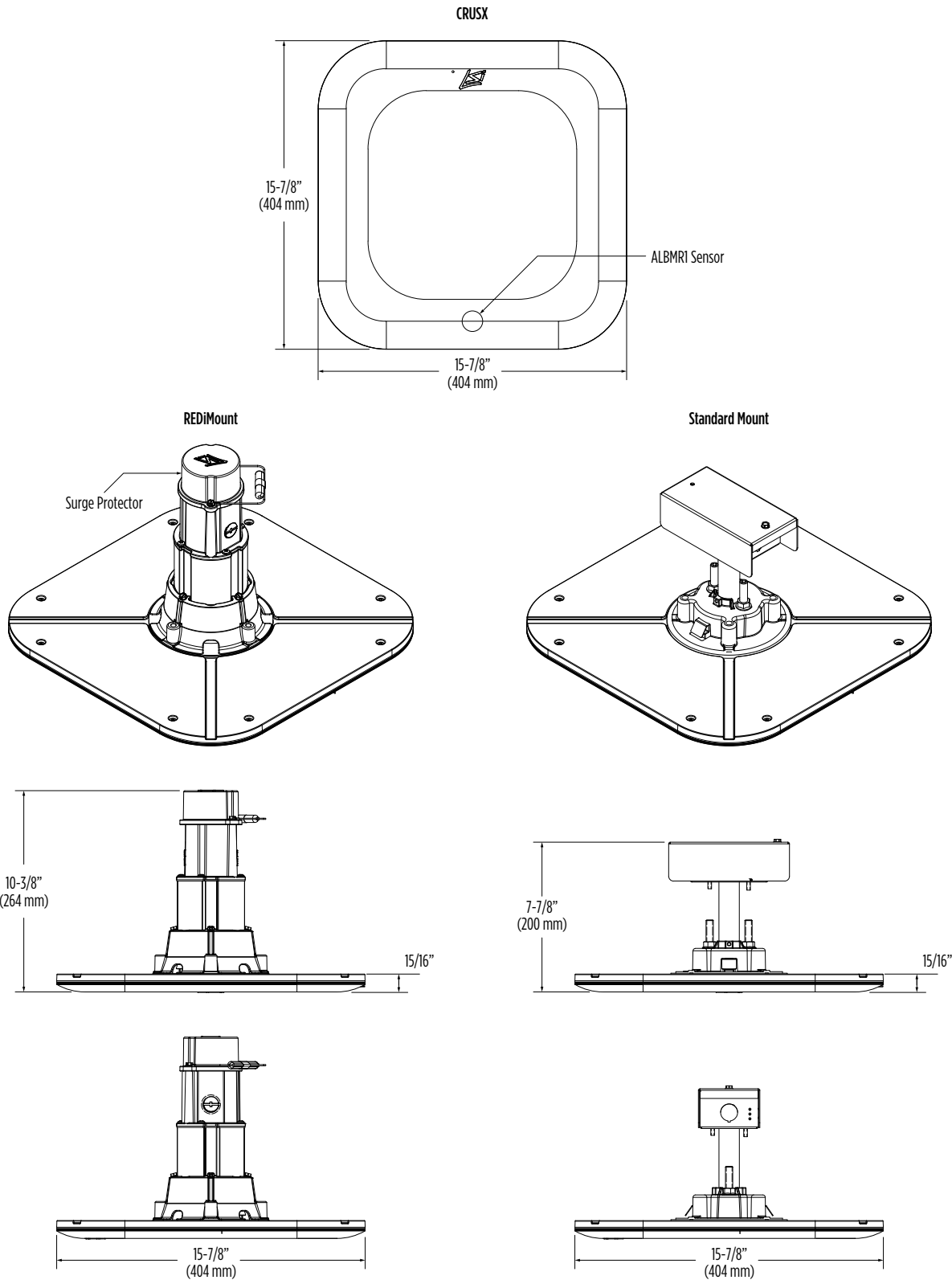
 Vertical Plane  Horizontal Cone

Polar Curve



 Vertical Plane  Horizontal Cone

PRODUCT DIMENSIONS



CONTROLS

AirLink Blue (ALBMR1)

Wireless Bluetooth Mesh Lighting Control System that incorporates Luminaire Level Lighting Controls (LLLC) and high-end trim to provide energy savings code compliance and enhanced safety/security for parking lots and parking garages. Three key components; Bluetooth wireless radio/sensor controller, Time Keeper and an iOS App with technology partner Silvair. Capable of grouping multiple fixtures and sensors as well as scheduling time-based events by zone. Radio/Sensor Controller is factory integrated into Area/Site, Wall Mounted, Parking Garage and Canopy luminaires.

[Click here to learn more details about AirLink Blue](#)



AirLink Blue App



Apple