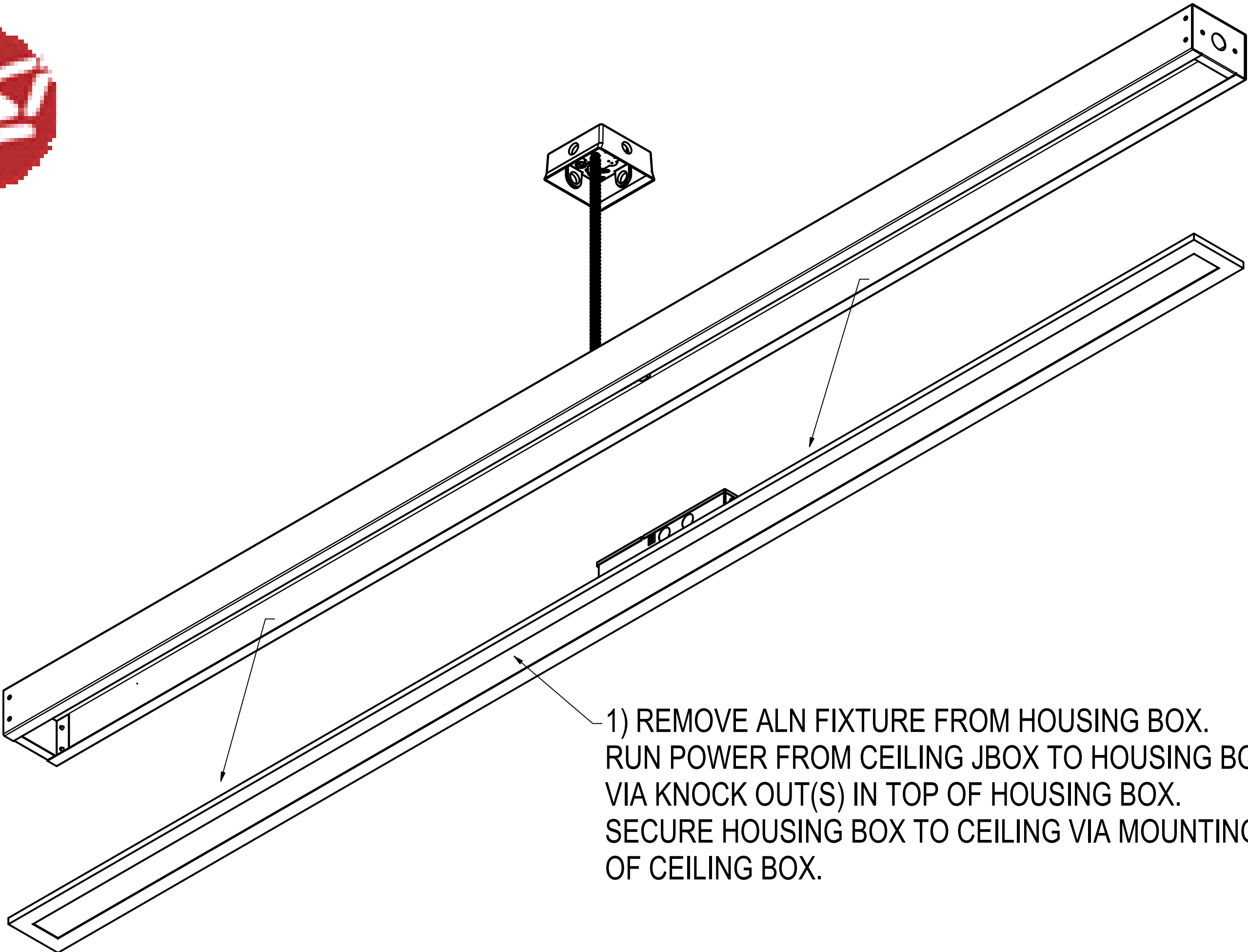


# ALN SM/SMC CONTINUOUS INSTALL INSTRUCTIONS



1) REMOVE ALN FIXTURE FROM HOUSING BOX.  
RUN POWER FROM CEILING JBOX TO HOUSING BOX  
VIA KNOCK OUT(S) IN TOP OF HOUSING BOX.  
SECURE HOUSING BOX TO CEILING VIA MOUNTING HOLES IN BACK  
OF CEILING BOX.



## BEFORE YOU BEGIN

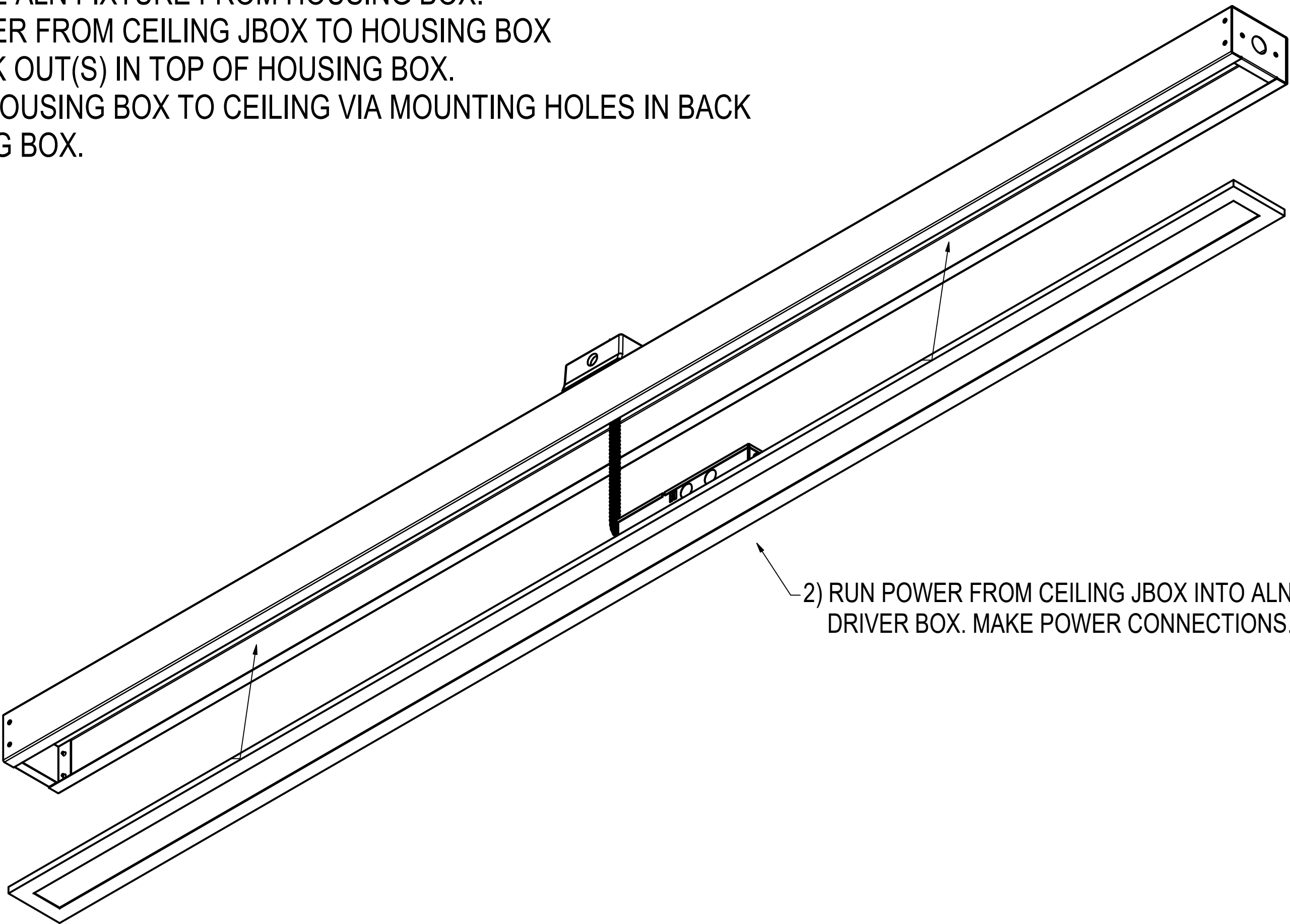
Read and follow all safety instructions



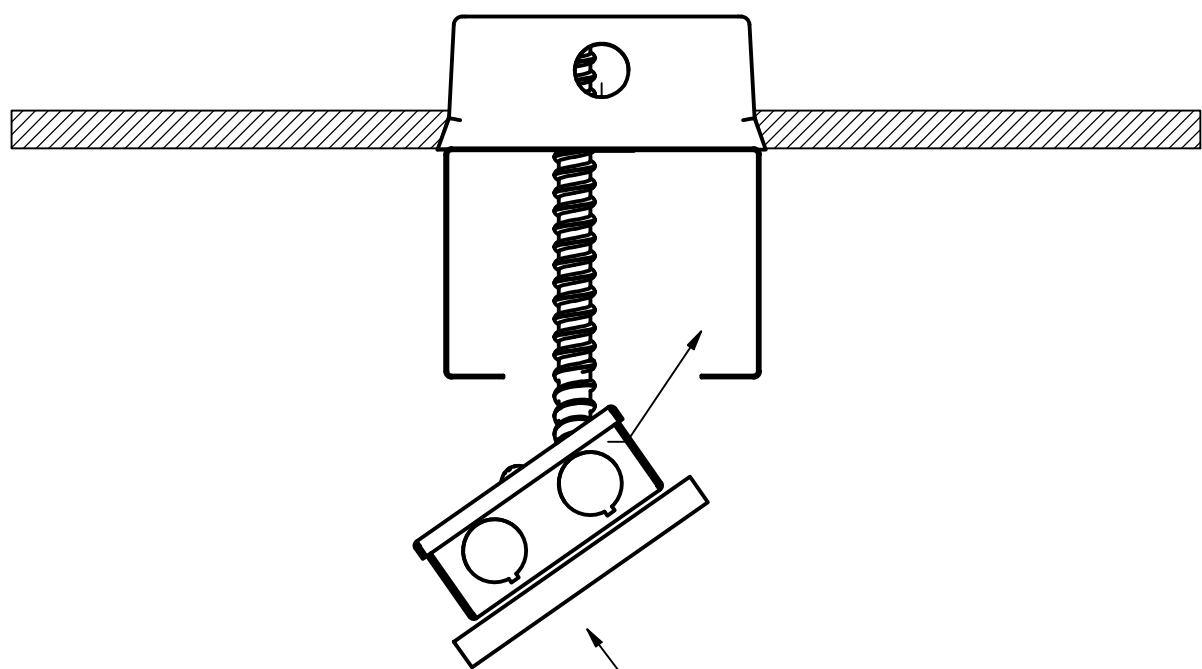
## WARNING

### RISK OF FIRE, EXPLOSION AND ELECTRIC SHOCK

- This product should be installed, inspected, and maintained by a qualified electrician only, in accordance with the NEC (National Electric Code) and all local codes.
- Turn off electrical power before inspection, installation or removal.
- Use only UL (or other NRTL) approved wire for input/output connections.
- Minimum size 18 AWG or 14 AWG for continuous runs.
- Make sure LEDs and drivers are cool to touch when performing maintenance.
- Make sure the supply voltage is the same as the rated voltage of the luminaire.
- Do not install in a hazardous atmosphere, except where the ambient temperature does not exceed the rated operating temperature of the fixture.
- Keep tightly closed when in operation



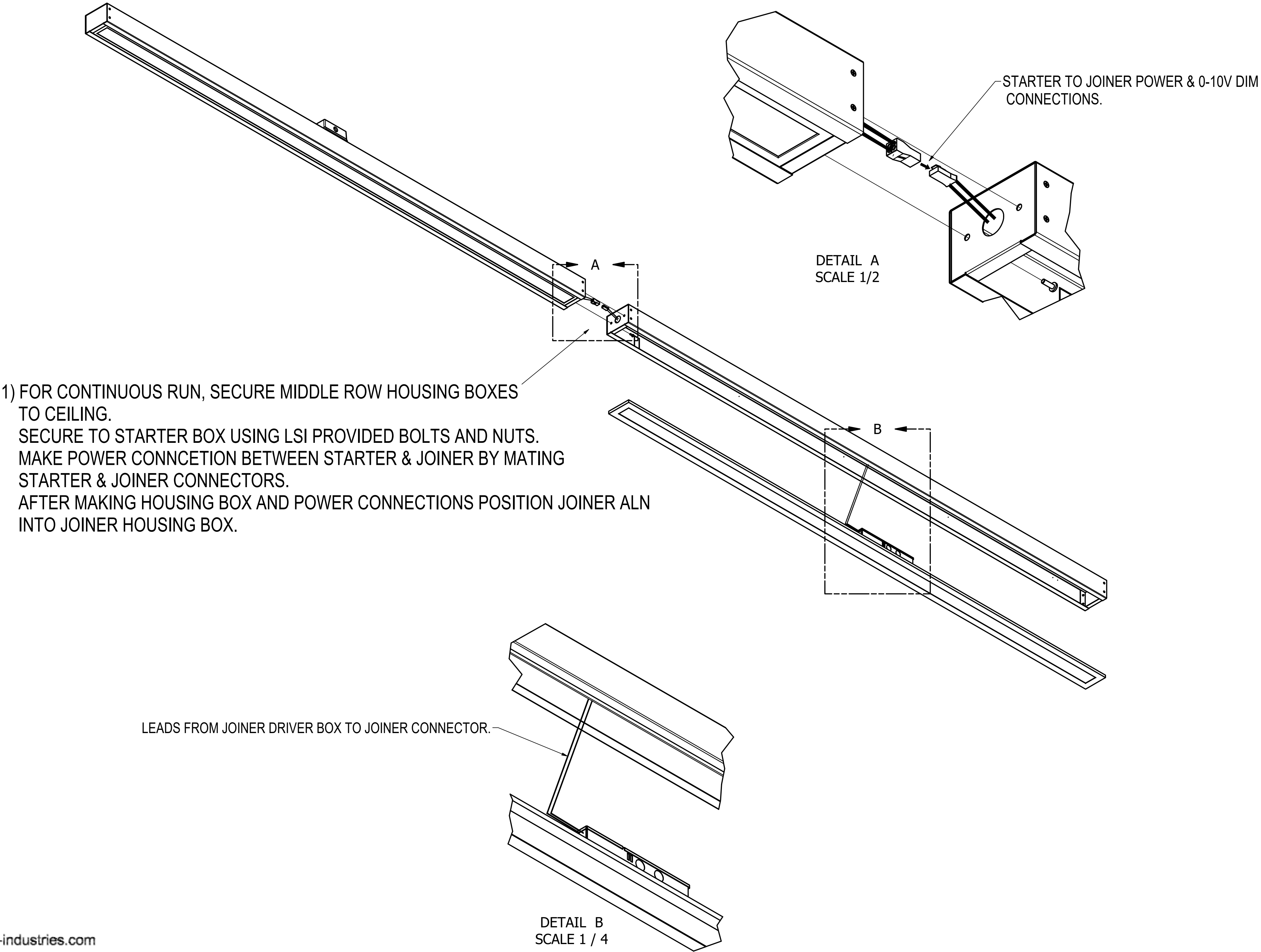
2) RUN POWER FROM CEILING JBOX INTO ALN FIXTURE  
DRIVER BOX. MAKE POWER CONNECTIONS.



3) PLACE ALN FIXTURE  
BACK INTO HOUSING BOX.

Installation Questions  
Call LSI Field Service Dept.  
800-436-7800 ext. 3300

# ALN SM/SMC CONTINUOUS INSTALL INSTRUCTIONS

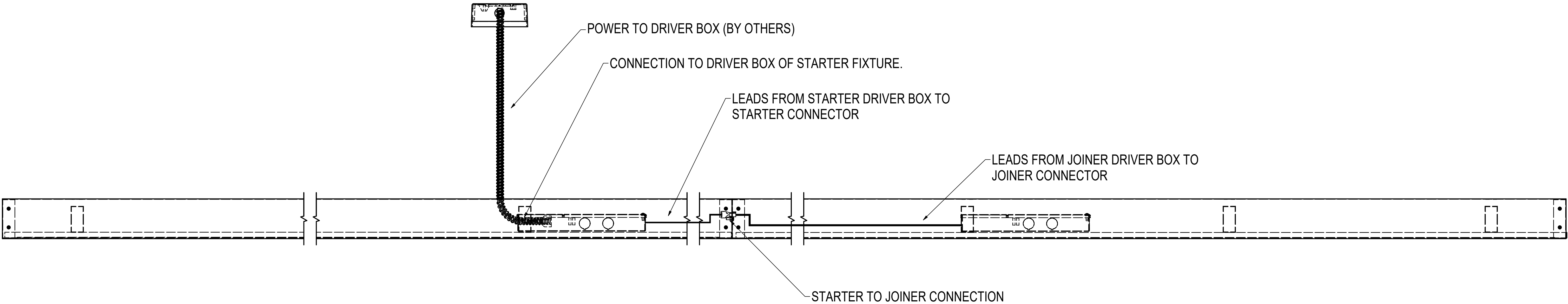


Installation Questions  
Call LSI Field Service Dept.  
800-436-7800 ext. 3300

LSI Industries Inc. 10000 Alliance Rd. Cincinnati, OH 45242 [www.lsi-industries.com](http://www.lsi-industries.com)  
Part No. 787987 5/31/2022



# ALN SM/SMC CONTINUOUS INSTALL INSTRUCTIONS



MAX RUN LENGTHS  
120V:  
4FT ALN =150FT  
8FT ALN = 70FT  
277V:  
4FT ALN =350FT  
8FT ALN =170FT

Installation Questions  
Call LSI Field Service Dept.  
800-436-7800 ext. 3300

LSI Industries Inc. 10000 Alliance Rd. Cincinnati, OH 45242 [www.lsi-industries.com](http://www.lsi-industries.com)  
Part No. 787987 5/31/2022