



# Mirada Bollard (MRB)



IP65



ARRA  
Funding Compliant



The Mirada Architectural Bollard combines superior engineering with purity of design & attention to detail. The durable construction & virtually maintenance free qualities makes it ideal for illuminating low level mounting height areas, such as entryways, pathways and most pedestrian-scale applications, requiring unique aesthetics in tandem with outstanding performance.

- Precision 2pc die-cast aluminum head maintains high aesthetic appeal and consistency while providing vandal resistance, and effective heat dissipation via a high performance integrated heatsink, hidden seams, and virtually invisible hardware
- 8-5/8" diameter one-piece extruded aluminum heavy wall seamless shaft with .322 inch wall thickness provides superior durability in the harshest environments
- High vertical illumination for maximum spacing between luminaires allows for fewer fixtures per site
- Two distributions, symmetrical for 360 degree illumination and A-symmetrical for pathway illumination
- Available in Phosphor Converted Amber, 2700K, 3000K, 4000K, and 5000K Color Temperatures standard

10000 Alliance Road  
Cincinnati, Ohio 45242

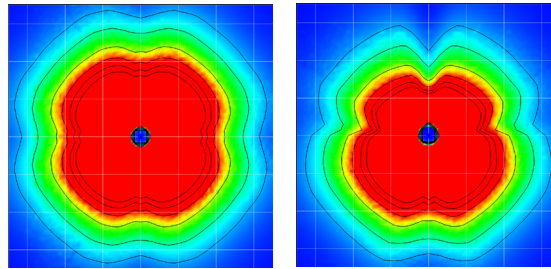
Phone 513.793.3200  
Fax 513.793.0147



[www.lsi-industries.com](http://www.lsi-industries.com)

## Performance

All published luminaire photometric testing performed to IESNA LM-79 standards. ISO footcandle plots below demonstrate the (MRB) light patterns only. Not for total fixture output. For complete specifications and IES files, see website.



Symmetric

Asymmetric

| DELIVERED LUMENS* |           |              |     |                  |          |                  |          |                  |          |                  |          |                  |          |         |
|-------------------|-----------|--------------|-----|------------------|----------|------------------|----------|------------------|----------|------------------|----------|------------------|----------|---------|
| LUMEN PACKAGE     | Lens Type | Distribution | CRI | AMB CCT          |          | 2700K CCT        |          | 3000K CCT        |          | 4000K CCT        |          | 5000K CCT        |          | WATTAGE |
|                   |           |              |     | DELIVERED LUMENS | EFFICACY | DELIVERED LUMENS | EFFICACY | DELIVERED LUMENS | EFFICACY | DELIVERED LUMENS | EFFICACY | DELIVERED LUMENS | EFFICACY |         |
| 25L               | ACR       | S            | 70  | 1713             | 56       | 2242             | 74       | 2156             | 71       | 2487             | 82       | 2485             | 81       | 30.5    |
| 30L               | ACR       | S            | 70  | 2110             | 55       | 2761             | 71.9     | 2655             | 69       | 3063             | 80       | 3061             | 80       | 38.4    |
| 25L               | ACR       | A            | 70  | 1327             | 58       | 1736             | 75.5     | 1670             | 73       | 1926             | 84       | 1925             | 84       | 23.0    |
| 30L               | ACR       | A            | 70  | 1634             | 56       | 2138             | 73.5     | 2056             | 71       | 2372             | 82       | 2370             | 81       | 29.1    |

\*LED Chips are frequently updated therefore values are nominal.

## Luminaire Ordering Information

TYPICAL ORDER EXAMPLE: **MRB LED 30L ACR S UNV DIM 40 PC120 BB BRZ HSS**

| Prefix                         | Source     | Lumen Package                                  | Lens                 | Distribution                                    | Voltage                                                                            | Driver                               |
|--------------------------------|------------|------------------------------------------------|----------------------|-------------------------------------------------|------------------------------------------------------------------------------------|--------------------------------------|
| <b>MRB</b><br>(Mirada Bollard) | <b>LED</b> | <b>25L</b> - 2,500 lm<br><b>30L</b> - 3,000 lm | <b>ACR</b> - Acrylic | <b>A</b> - Asymmetric<br><b>S</b> - Symmetrical | <b>UNV</b> - Universal Voltage (120-277V)<br><b>HV</b> - High Voltage (347 - 480v) | <b>DIM</b> - 0-10v Dimming (10-100%) |

| Color Temp                                                                                                                                                 | CRI                    | Controls (Choose one)                                                                                  | Battery Backup <sup>4</sup>                                             | Finish                                                                                                                                                                                   | Options                                                                                                                                                                                             |
|------------------------------------------------------------------------------------------------------------------------------------------------------------|------------------------|--------------------------------------------------------------------------------------------------------|-------------------------------------------------------------------------|------------------------------------------------------------------------------------------------------------------------------------------------------------------------------------------|-----------------------------------------------------------------------------------------------------------------------------------------------------------------------------------------------------|
| <b>50</b> - 5,000K<br><b>40</b> - 4,000K<br><b>30</b> - 3,000K<br><b>27</b> - 2,700K <sup>1</sup><br><b>AMB</b> - Phosphor<br>Converted Amber <sup>1</sup> | <b>(Blank)</b> - 70CRI | Button Type Photocells<br><b>PC1120</b> - 120V<br><b>PC1208-277</b> - 208-277V<br><b>PC1347</b> - 347V | <b>BB</b> - Battery Backup<br><b>CWBB</b> - Cold Weather Battery Backup | <b>BRZ</b> - Bronze<br><b>BLK</b> - Black<br><b>WHT</b> - White<br><b>PLP</b> - Platinum Plus<br><b>SVG</b> - Satin Verde Green<br><b>GPT</b> - Graphite<br><b>MSV</b> - Metallic Silver | <b>H</b> - XX (Specify Height) <sup>2</sup><br><b>GFR</b> - GFI Duplex Receptacle<br><b>LAB</b> - Less Anchor Bolts<br><b>RN</b> - Roughneck Heavy Duty Mtg Plate<br><b>HSS</b> - House Side Shield |

## Accessory Ordering Information<sup>3</sup>

| Description                | Order Number |
|----------------------------|--------------|
| HSS - House Side Shield    | 699105       |
| Galvanized anchor Bolt kit | 285560       |

### FOOTNOTES:

- 1 - Consult Factory for availability.
- 2 - Standard height is 42". Non Standard heights are available in 6" increments. Minimum height is 24", 30" with battery backup option. Maximum height is 60".
- 3 - Accessories are shipped separately and field installed.
- 4 - Not available in HV Voltage.